



Statistical Publication

Inmate Statistics
(Weekly States)
July 1994 to June 1995

Sylviane Mariasson

Statistical Publication No.11
August 1996
ISSN 0814 1215

NSW Department of Corrective Services

CONTENTS

Acknowledgements	ii
Introduction	1
Daily average number of inmates in NSW	6
Trends in the inmate population 1973 - 1995	7
Annual Trends in the inmate population 1973 - 1994/5	8
Inmates in full-time custody and people with periodic detention warrants	9
Status of inmates in full-time custody	11
Sex of inmates in full-time custody	15
Periodic detainees - Total warrants and number attending	17
Classification of institution in which inmates are held	19
Number of appellants in full-time custody	21
Segregation and protection	23
Number of fine defaulters in full-time custody	25
Number of unsentenced inmates less appellants	27
Profile on last Sunday of June 1995	29
Institutional security - Percentage on last Sunday of June 1995	30
Periodic Detainees - Attendance and reasons for non-attendance	31
Weekly states - First Sunday of each month	32

ACKNOWLEDGEMENTS:

Many thanks to the Deputy Governors and the Clerks of each institution who provide their Correctional Centre's Weekly State on a regular basis.

Thanks also to the staff of the Research and Statistics Unit who were involved with the compilation of these statistics: Nicolle Tierney who collected and collated the information and typed the returns, Barbara Thompson who assisted with the introduction and checked the returns, as well as Margaret Bowery, Antonia Barila and Simon Eyland who also checked the returns and Ed Dickson who typed the text and tables.

INTRODUCTION

This is the Eleventh annual collection of inmate statistics derived from the Weekly States reports. The "Weekly States" is a statistical collection of information about the inmate population of each correctional centre in NSW as at midnight Sunday each week. As for previous years, this information is categorised in terms of the correctional centre, the sex of the inmate, and whether the inmate is being held under sentence (serving a determinate sentence or life sentence or held as a forensic patient or fine defaulter) or not under sentence (remandee, appellant or deportee). Totals for inmates in full-time custody are separated from periodic detainees. Two counts are provided for periodic detainees: a count of those who actually attended periodic detention during any week and a count of the number of people with periodic detention orders. There is also an overall count for each of the reasons given for non-attendance as known at that detention period. These are grouped as "reasons known" (in full-time custody on appeal with bail or leave (sick or other) applied for) and absent without leave (no reason given, or legal action pending). Each week's total state is compared with the highest and lowest weekly state in the previous twelve months, as well as with the weekly state of the previous week.

Information on the numbers held on segregation, protection, the number of appellants and the number of juveniles (aged under 18 years) is presented. Accommodation details including a comparison of the design accommodation of the institution with the numbers of inmates held are also provided. Since November 1991 information is also presented on the numbers of fine defaulters (inmates in custody for the sole reason of default of fine) and the numbers held on remand or for trial. The number of fine defaulters, appellants, remands/trials and juveniles at Junee (the state's only private prison) is also shown.

The "Weekly States" is, as the name implies, issued on a weekly basis. The purpose of this annual collection is to present information from these Weekly States statistical reports in a more convenient format to facilitate those interested in examining trends. Tables and graphs portraying weekly totals of:

- full-time custody versus periodic detainees;
- sentenced versus unsentenced;
- males versus females;
- male periodic detainees versus female periodic

detainees;

- those held in maximum versus medium versus minimum security institutions;
- appellants;
- inmates held under protection or segregation;
- fine defaulters

for each Sunday in the 1994-95 financial year are provided in this publication. In addition, individual Weekly States reports for the first Sunday in each month as well as the last Sunday in the financial year are reproduced. To place the 1994-95 figures in context, a summary of NSW inmate population trends since 1971 is also provided.

The information in this publication replaces any figures previously released.

Highlights

The daily average of 6279 inmates in full-time custody (excluding periodic detainees) is 144 lower than for 1993/94. This is the first time the daily average had been lower than the preceding year since 1984/85 when the average was 3473.

There was little overall change in the total number of inmates, the number of sentenced inmates (excluding appellants) or the number on remand.

There was an increase in the number of people with periodic detention warrants; 4 % more males and 14 % more females.

The number of appellants fell from an average of 534 in July, 1994 to an average of 444 during the last 9 months of the year.

The number of inmates in segregation rose slightly from an average of 28 in the first six months to an average of 38 in the last six months.

The number of inmates on protection rose from an average of 422 during July, August and September 1994 to an average of 657 during April, May and June 1995.

After a moratorium on the execution of fine default warrants from 31st March to 30th June, 1994, the number of fine defaulters rose during the year from 5 on the 3rd July, 1994 to an average of 68 in the last half of the year.

The table on page 4 provides comparisons between the numbers held at the end of the different financial years. However, even within the twelve month period of this report, other significant fluctuations occurred in the size of the inmate population. The variation in the total number of inmates in full-time custody during 1994/95 was 322, more than the design capacity of a smaller correctional centre like John Morony Correctional Centre (250). It is interesting to also note the size of the fluctuation within different sections of the inmate population. Male sentenced (278), male unsentenced (197), female sentenced (47), female unsentenced (49), maximum security (182), medium security (183), and minimum security (352).

*Changes in the size of various components of the inmate population in recent years
Number present on last Sunday of financial year*

	<i>This year 25.6.95</i>	<i>1 year earlier 26.6.94</i>	<i>2 years earlier 27.6.93</i>	<i>5 years earlier 24.6.90</i>
Full-time custody	6407	6409	6386	5457
Unsented	1201	1328	1416	1229
Sented	5206	5081	4970	4228
Males	6098	6098	6080	5124
Females	309	311	306	333
Maximum Security ⁽¹⁾⁽²⁾	1668	1757	2110	2203
Medium Security ⁽¹⁾⁽²⁾	1763	1826	2147	1676
Minimum Security ⁽¹⁾	2976	2826	2129	1578
Juveniles	0	0	0	6
Segregation	48	29	47	38
Protection	678	449	425	625
Appellants	463	569	639	420
P.D.C. ⁽³⁾	1409	1344	1272	869
Male P.D.C. ⁽³⁾	1309	1256	1213	813
Female P.D.C. ⁽³⁾	100	88	59	56

(1) These figures refer to the security classifications of the institutions in which the inmates were held. They do **not** refer to individual inmate security classifications.

(2) At the end of the 1992/93 financial year John Morony was in the process of being reclassified from maximum security to minimum security, Tamworth from maximum to medium and Cessnock from medium to minimum security. These security classification changes were not made on the Weekly States until 4th July, 1993. Parklea Correctional Centre was reclassified from maximum security to medium on 14.10.90.

(3) These are numbers of people with periodic detention warrants. Counting rules for periodic detention warrants changed during 1990-91. For further information on the way in which these counting rules changed, refer to "Prisoner Statistics (Weekly States) July 1990 to June 1991".

NOTE: All inmates at Parklea (complex of minimum, medium and maximum security) and all inmates at Mulawa are counted as medium security.

Percentage change in various components of the inmate population in recent years

	Change in past year 26.6.94 - 25.6.95	Change in past 2 years 27.6.93 - 25.6.95	Change in past 5 years 24.6.90 - 25.6.95
Full-time custody	-0.03%	+ 0.3%	+ 17.4%
Unsentenced	-9.6%	+ -15.2%	- 2.3%
Sentenced	+ 2.5%	+ 4.7%	+ 23.1%
Males	0.0%	+ 0.3%	+ 19.0%
Females	- 0.6%	+1.0%	- 7.2%
Maximum Security (1)(2)	- 5.1%	- 20.9%	- 24.3%
Medium Security (1)(2)	-3.5%	- 17.9%	+ 5.2%
Minimum Security (1)	+ 5.3%	+ 39.8%	+ 88.6%
Segregation	+ 65.5%	+ 2.1%	+ 26.3%
Protection	+ 51.0%	+ 59.5%	+ 8.5%
Appellants	+18.6%	- 27.5%	+ 10.2%
P.D.C. (3)	+ 4.8%	+ 10.8%	+ 62.1%
Male P.D.C. (3)	+ 4.2%	+ 7.9%	+ 61.0%
Female P.D.C. (3)	+ 13.6%	+ 69.5%	+ 78.6%

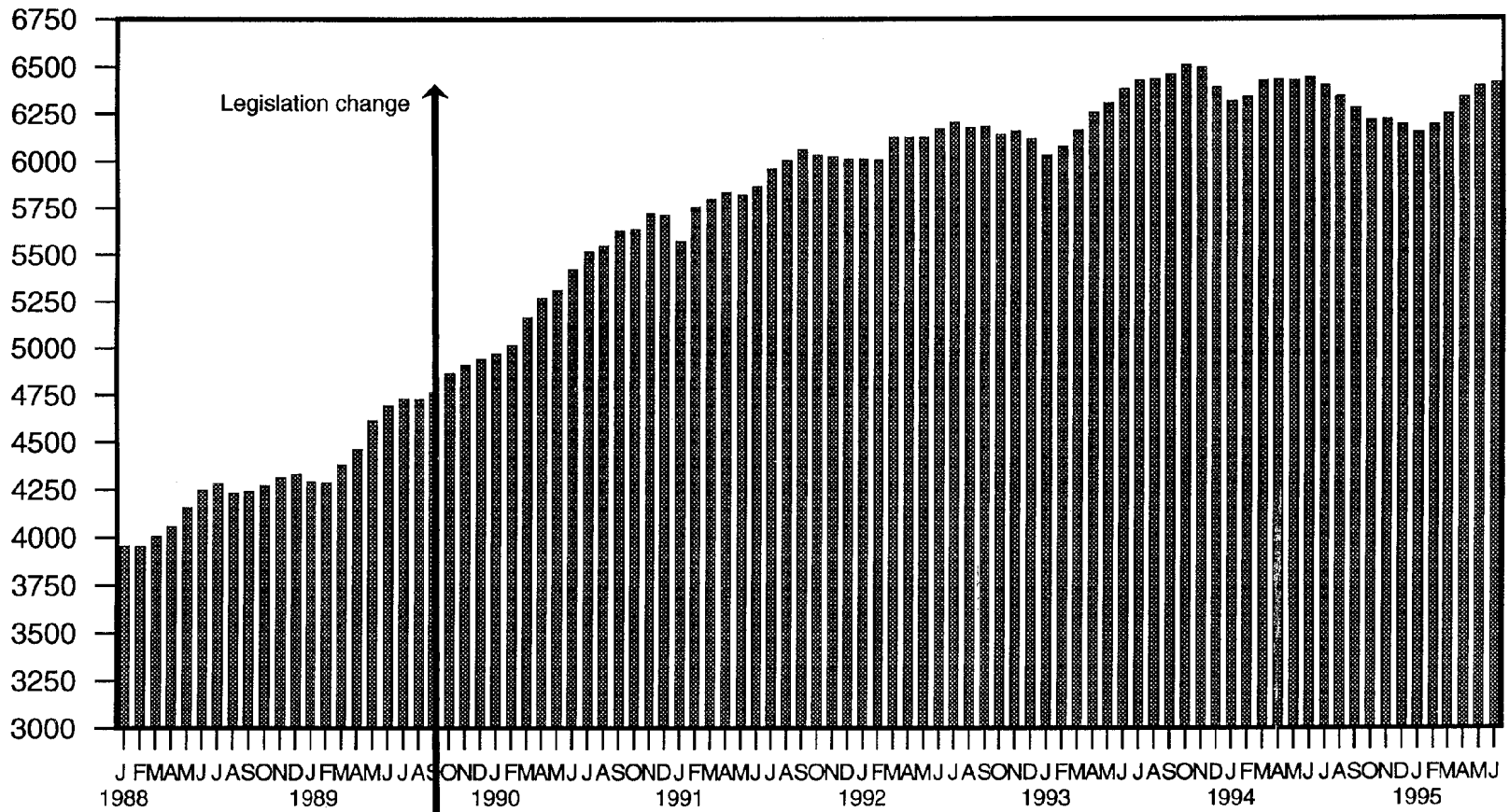
(1) These figures refer to the security classifications of the institutions in which the inmates were held. They do **not** refer to individual inmate security classifications.

(2) At the end of the 1992/93 financial year John Morony was in the process of being reclassified from maximum security to minimum security, Tamworth from maximum to medium and Cessnock from medium to minimum security. These security classification changes were not made on the Weekly States until 4th July, 1993. Parklea Correctional Centre was reclassified from maximum security to medium on 14.10.90.

(3) These are numbers of people with periodic detention warrants. Counting rules for periodic detention warrants changed during 1990-91. For further information on the way in which these counting rules changed, refer to "Prisoner Statistics (Weekly States) July 1990 to June 1991".

NOTE: All inmates at Parklea (complex of minimum, medium and maximum security) and all inmates at Mulawa are counted as medium security.

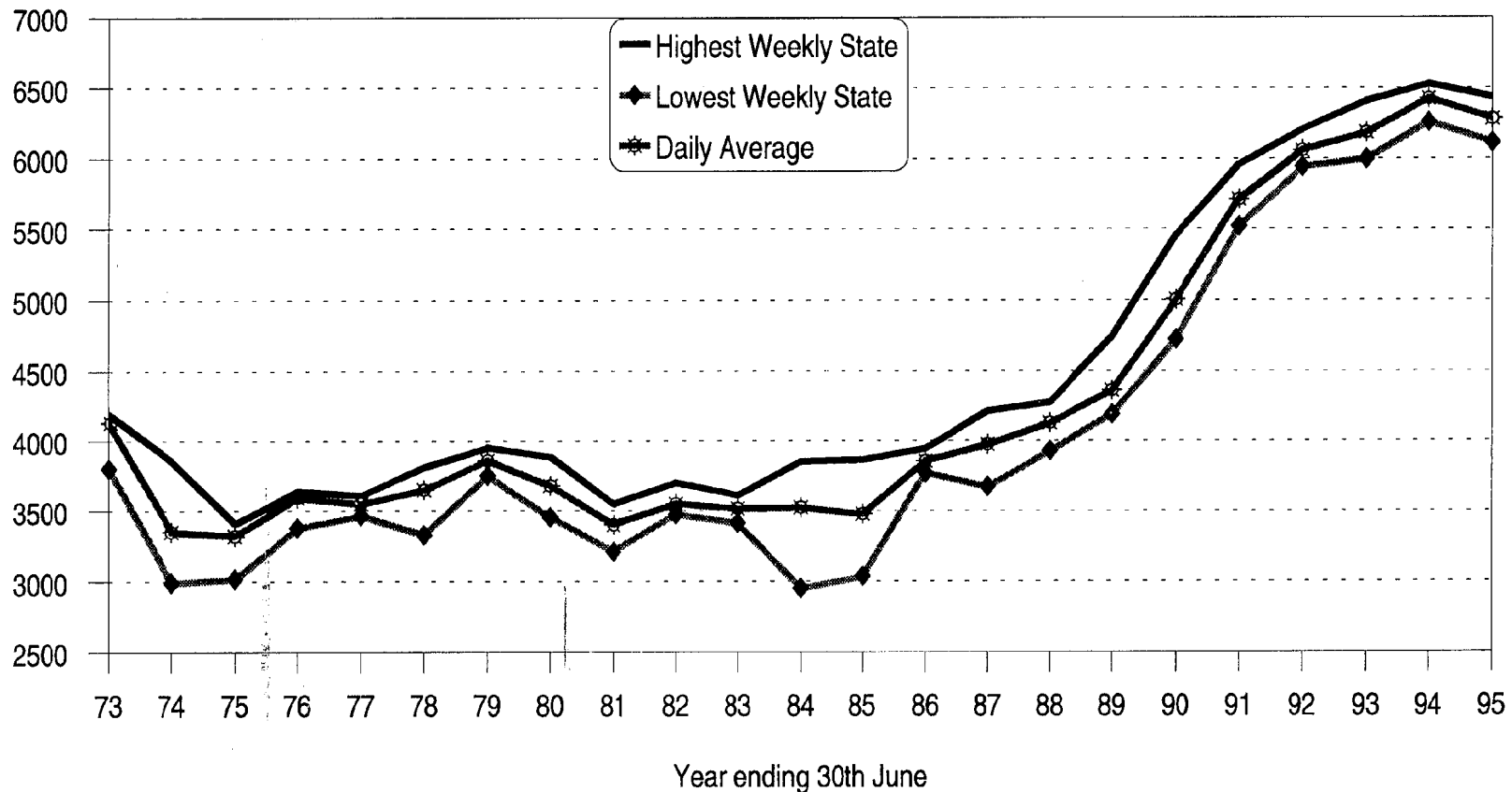
Daily Average Number of Inmates in NSW Correctional Centres (excludes Periodic Detainees)



Research & Statistics, NSW Department of Corrective Services.

Source: Supplied on weekly basis from Correctional Centres

Trends in the Inmate Population 1973 to 1995



Research & Statistics, NSW Department of Corrective Services

Annual Trends in the Inmate Population; 1973 to 1994/95

Year Ending 30 June	Daily Average ¹	Rate per 100,000 NSW Population ²	% Change from last year	Lowest Weekly State ³	Highest Weekly State ³	Difference	
						No.	% of Average
1973 ⁴	4130	85.7	- 0.3%	3803	4192	389	9.4%
1974	3348	68.8	- 18.9%	2988	3854	866	25.9%
1975	3318	67.5	- 0.9%	3015	3405	390	11.8%
1976	3587	72.5	+ 8.1%	3373	3637	264	7.4%
1977	3547	71.2	- 1.1%	3462	3605	143	4.0%
1978	3645	72.5	+ 2.8%	3326	3808	482	13.2%
1979	3858	75.9	+ 5.8%	3749	3952	203	5.3%
1980	3677	71.5	- 4.7%	3453	3885	432	11.7%
1981	3398	65.3	- 7.6%	3208	3546	338	9.9%
1982	3549	67.3	+ 4.4%	3471	3699	228	6.4%
1983	3511	65.8	- 1.1%	3408	3605	197	5.6%
1984	3518	65.3	+ 0.2%	2948	3851	903	25.7%
1985	3473	63.8	- 1.3%	3034	3862	828	23.8%
1986	3854	70.1	+ 11.0%	3767	3943	176	4.6%
1987	3971	71.3	+ 3.0%	3668	4210	542	13.6%
1988	4124	72.9	+ 3.9%	3925	4271	346	8.4%
1989	4358	75.9	+ 5.7%	4187	4742	555	12.7%
1990	5002	86.3	+ 14.8%	4722	5457	735	14.7%
1991	5712	97.4	+ 14.2%	5521	5956	435	7.6%
1992	6056	102.1 ⁵	+ 6.0%	5940	6201	261	4.3%
1993	6181	103.3 ⁵	+ 2.1%	5995	6405	410	6.6%
1994	6423	106.6 ^{5§}	+ 3.9%	6255	6526	271	4.2%
1995	6279	103.4 ⁵	- 2.2%	6110	6432	322	5.1%
Average	4283	78.4	+2.2%	4058	4480	422	10.5%

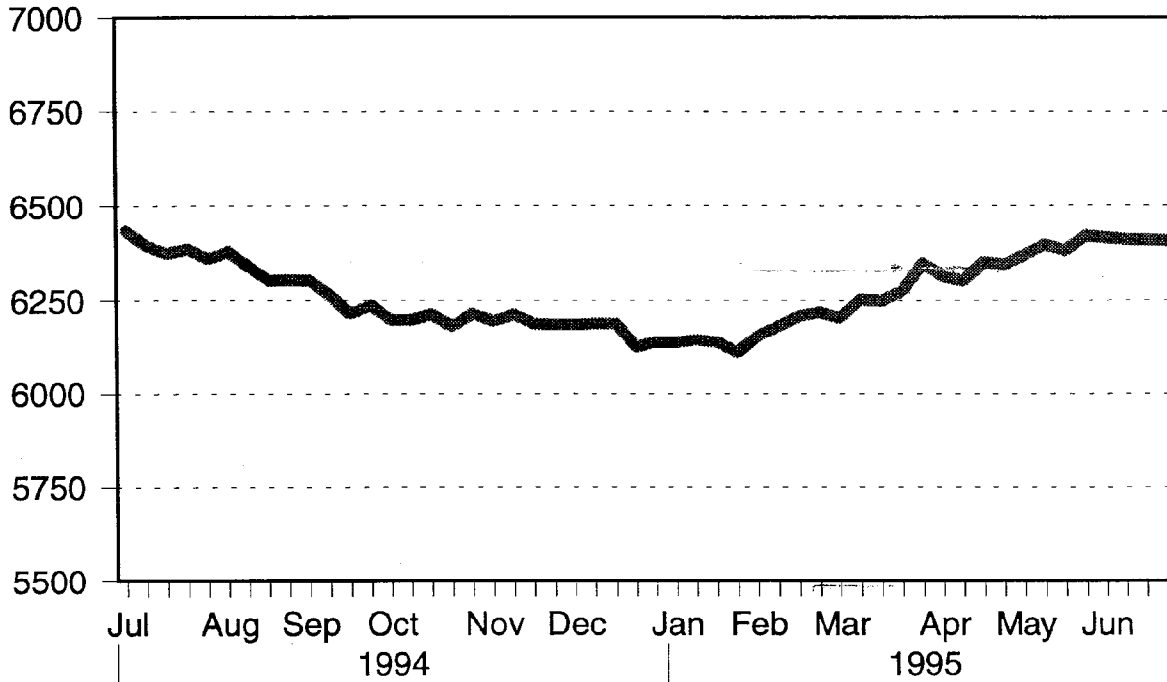
- (1) Excluding the number in Periodic Detention.
 (2) Based on Australian Bureau of Statistics estimates of the mean resident population of New South Wales for the relevant financial year (Catalogue No. 3101.0).
 (3) Taken at midnight each Sunday, excluding Periodic Detainees.
 (4) For calendar year ending 31 December.
 (5) Preliminary figures.
 § Figure amended since 1993.94 Annual Report.

Weekly States July 1994 - June 1995
Inmates in Full-time Custody and People with Periodic Detention Warrants

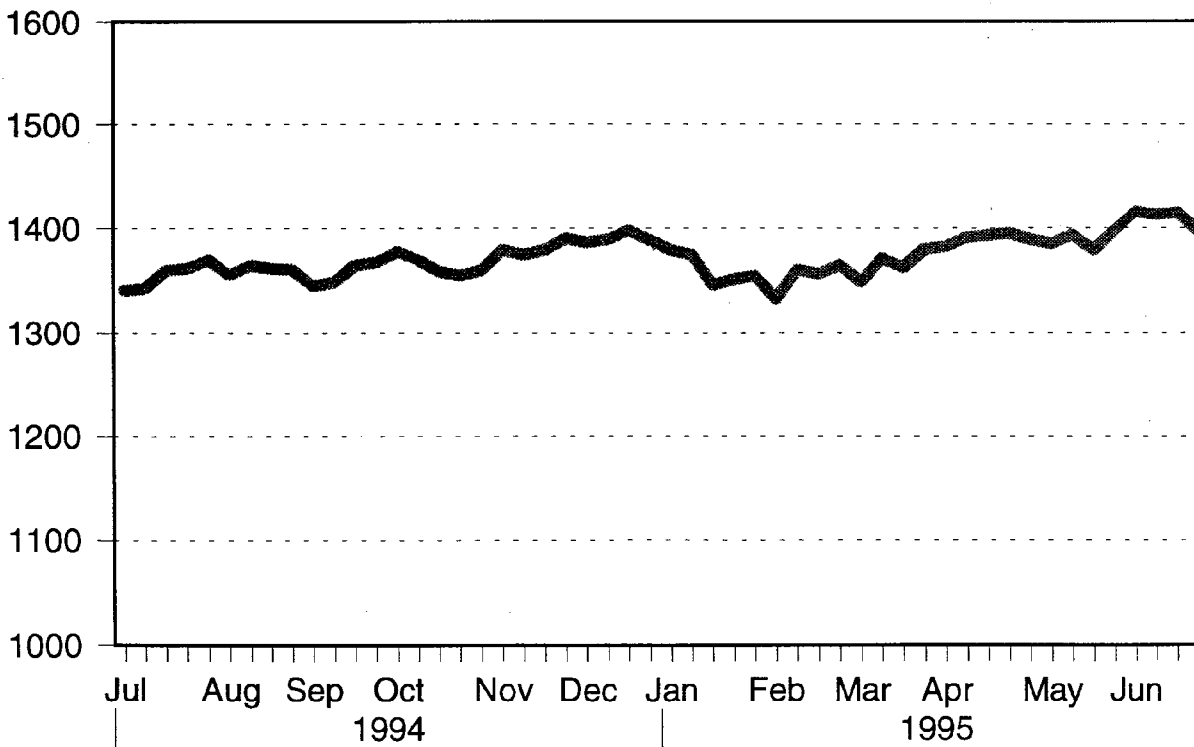
Date	Full-time Custody	Periodic Detainees	Total Inmates & Detainees	Date	Full-time Custody	Periodic Detainees	Total Inmates & Detainees
3 July, 1994	6432	1340	7772	1 January, 1995	6138	1379	7517
10 July, 1994	6394	1342	7736	8 January, 1995	6137	1374	7511
17 July, 1994	6373	1359	7732	15 January, 1995	6144	1345	7489
24 July, 1994	6384	1361	7745	22 January, 1995	6138	1351	7489
31 July, 1994	6358	1369	7727	29 January, 1995	6110	1354	7464
7 August, 1994	6377	1355	7732	5 February, 1995	6155	1332	7487
14 August, 1994	6338	1364	7702	12 February, 1995	6180	1360	7540
21 August, 1994	6303	1361	7664	19 February, 1995	6208	1356	7564
28 August, 1994	6305	1360	7665	26 February, 1995	6217	1364	7581
4 September, 1994	6303	1344	7647	5 March, 1995	6204	1348	7552
11 September, 1994	6262	1348	7610	12 March, 1995	6253	1369	7622
18 September, 1994	6214	1364	7578	19 March, 1995	6249	1358	7607
25 September, 1994	6237	1367	7604	26 March, 1995	6253	1369	7622
2 October, 1994	6198	1375	7573	2 April, 1995	6249	1358	7607
9 October, 1994	6197	1369	7566	9 April, 1995	6313	1388	7701
16 October, 1994	6213	1358	7571	16 April, 1995	6302	#	#
23 October, 1994	6180	1354	7534	23 April, 1995	6350	1394	7744
30 October, 1994	6215	1359	7574	30 April, 1995	6341	1390	7731
6 November, 1994	6195	1379	7574	7 May, 1995,	6367	1385	7752
13 November, 1994	6213	1374	7587	14 May, 1995	6396	1393	7789
20 November, 1994	6189	1379	7568	21 May, 1995	6380	1379	7759
27 November, 1994	6185	1390	7575	28 May, 1995	6419	1398	7817
4 December, 1994	6186	1386	7572	4 June, 1995	6414	1406	7820
11 December, 1994	6188	1389	7577	11 June, 1995	6409	1413	7822
18 December, 1994	6189	1398	7587	18 June, 1995	6409	1415	7824
25 December, 1994	6125	#	#	25 June, 1995	6407	1409	7816

NOTE: # Periodic Detention Centres closed over Christmas and Easter.

Inmates in Full-time Custody



People with Periodic Detention Warrants



Research & Statistics, NSW Department of Corrective Services.

Weekly States July 1994 - June 1995
Status of Inmates in Full-time Custody

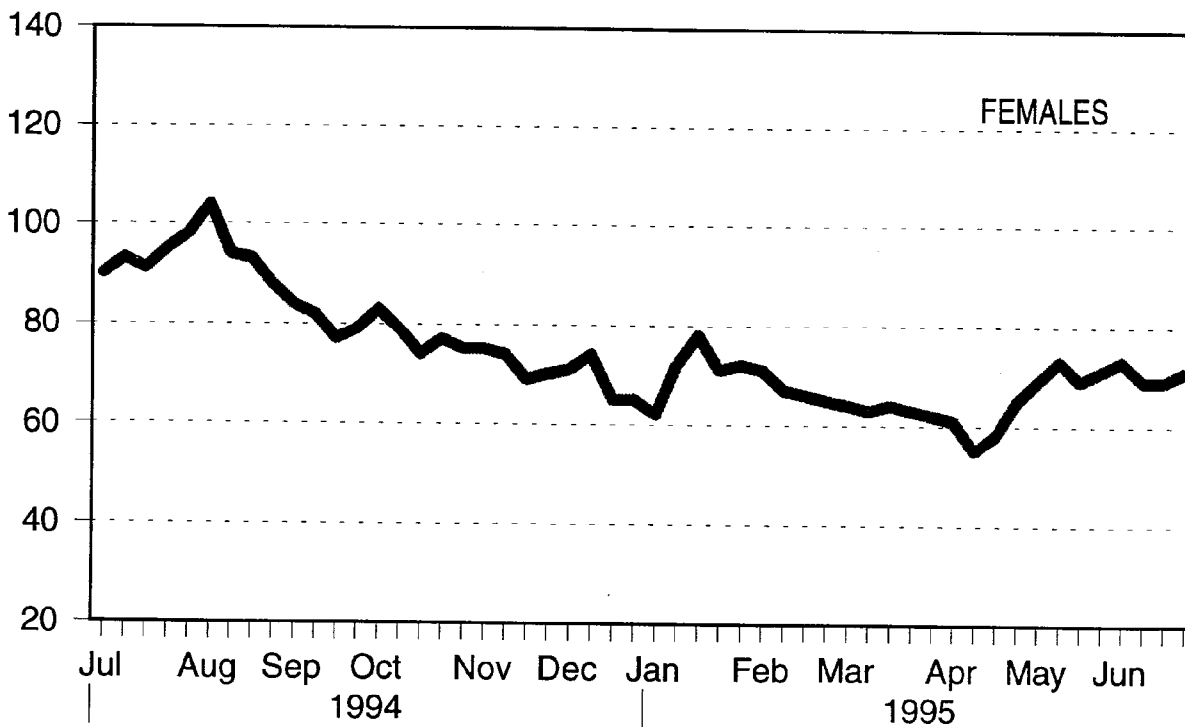
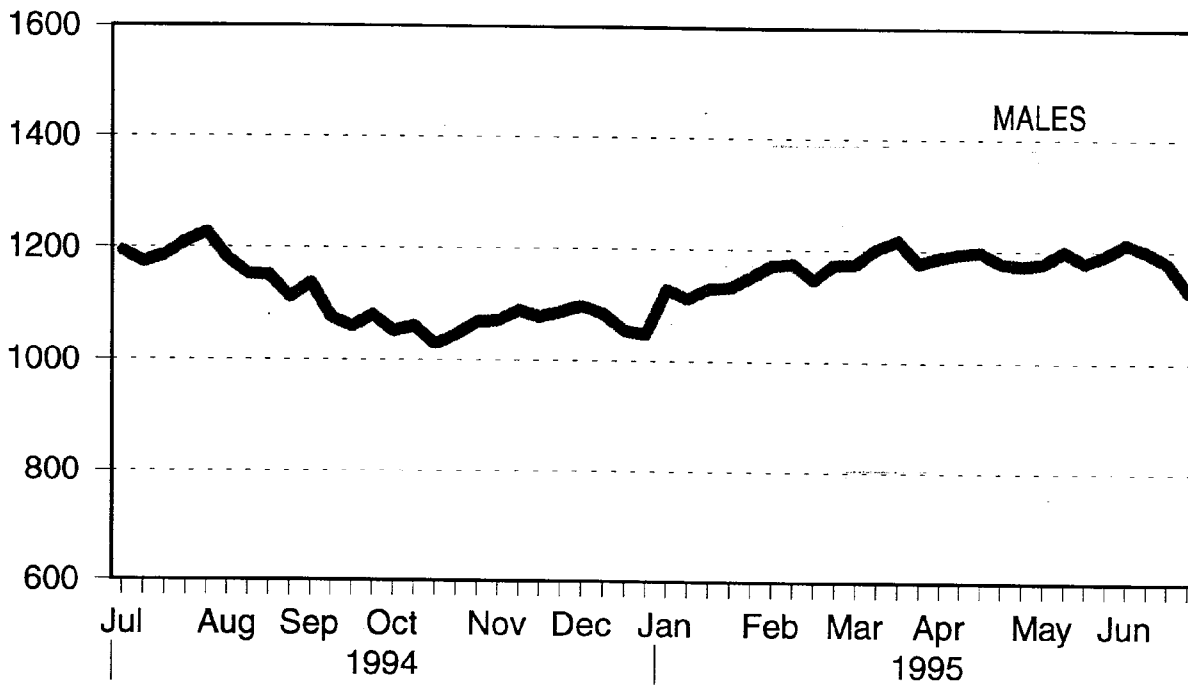
Date	Unsentenced* Inmates			Sentenced# Inmates			Total Inmates
	Male	Female	Total Unsentenced Inmates	Male	Female	Total Sentenced Inmates	
3 July, 1994	1193	90	1283	4931	218	5149	6432
10 July, 1994	1174	93	1267	4915	212	5127	6394
17 July, 1994	1185	91	1276	4892	205	5097	6373
24 July, 1994	1210	95	1305	4877	202	5079	6384
31 July, 1994	1226	98	1324	4833	201	5034	6358
7 August, 1994	1180	104	1284	4879	214	5093	6377
14 August, 1994	1153	94	1247	4879	212	5091	6338
21 August, 1994	1151	93	1244	4847	212	5059	6303
28 August, 1994	1112	88	1200	4883	222	5105	6305
4 September, 1994	1137	84	1221	4853	229	5082	6303
11 September, 1994	1076	82	1158	4883	221	5104	6262
18 September, 1994	1060	77	1137	4854	223	5077	6214
25 September, 1994	1080	79	1159	4855	223	5078	6237
2 October, 1994	1052	83	1135	4847	216	5063	6198
9 October, 1994	1062	79	1141	4837	219	5056	6197
16 October, 1994	1029	74	1103	4883	227	5110	6213
23 October, 1994	1047	77	1124	4834	222	5056	6180
30 October, 1994	1069	75	1144	4851	220	5071	6215
6 November, 1994	1072	75	1147	4831	217	5048	6195
13 November, 1994	1090	74	1164	4828	221	5049	6213
20 November, 1994	1078	69	1147	4817	225	5042	6189
27 November, 1994	1088	70	1158	4813	214	5027	6185
4 December, 1994	1098	71	1169	4800	217	5017	6186
11 December, 1994	1085	74	1159	4810	219	5029	6188
18 December, 1994	1055	65	1120	4839	230	5069	6189
25 December, 1994	1049	65	1114	4788	223	5011	6125

*"Unsentenced" includes remands, trials, appellants and deportees

#"Sentenced" includes sentenced to term imprisonment, life sentence, forensic patient and fine defaulters

Number of Unsentenced Inmates in Full-time Custody

(Unsentenced includes: Remands, Trials, Appellants and Deportees)



Research & Statistics, NSW Department of Corrective Services.

Weekly States July 1994 - June 1995
Status of Inmates in Full-time Custody

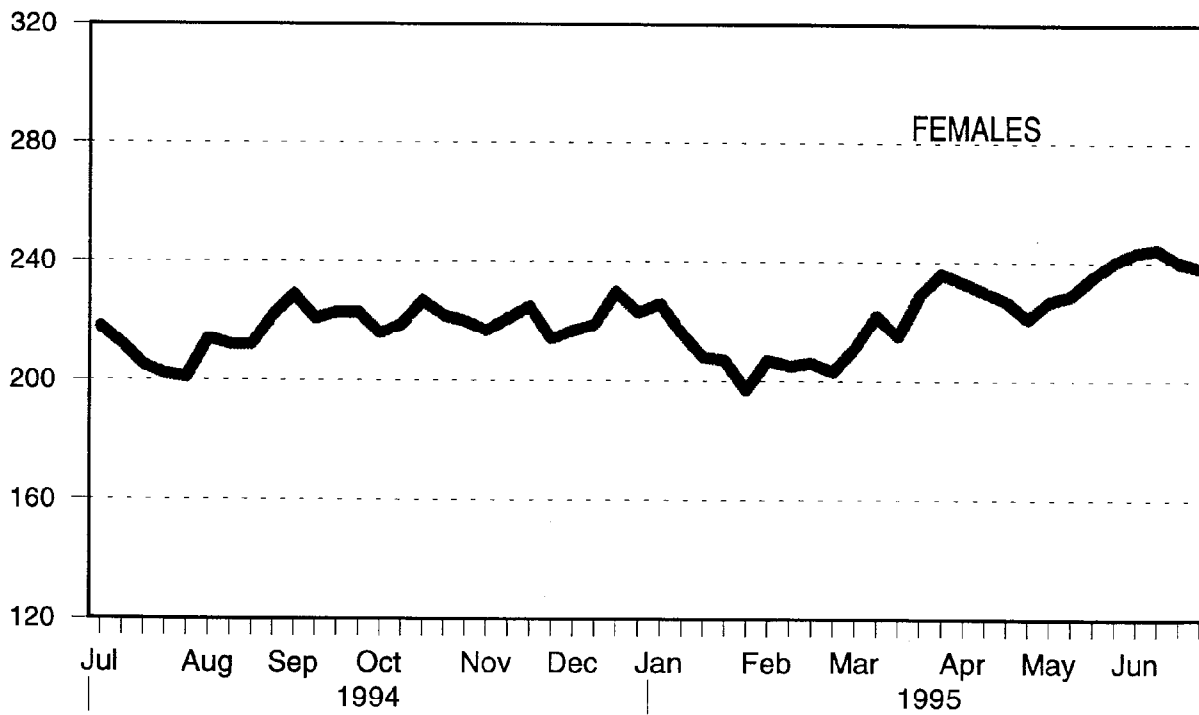
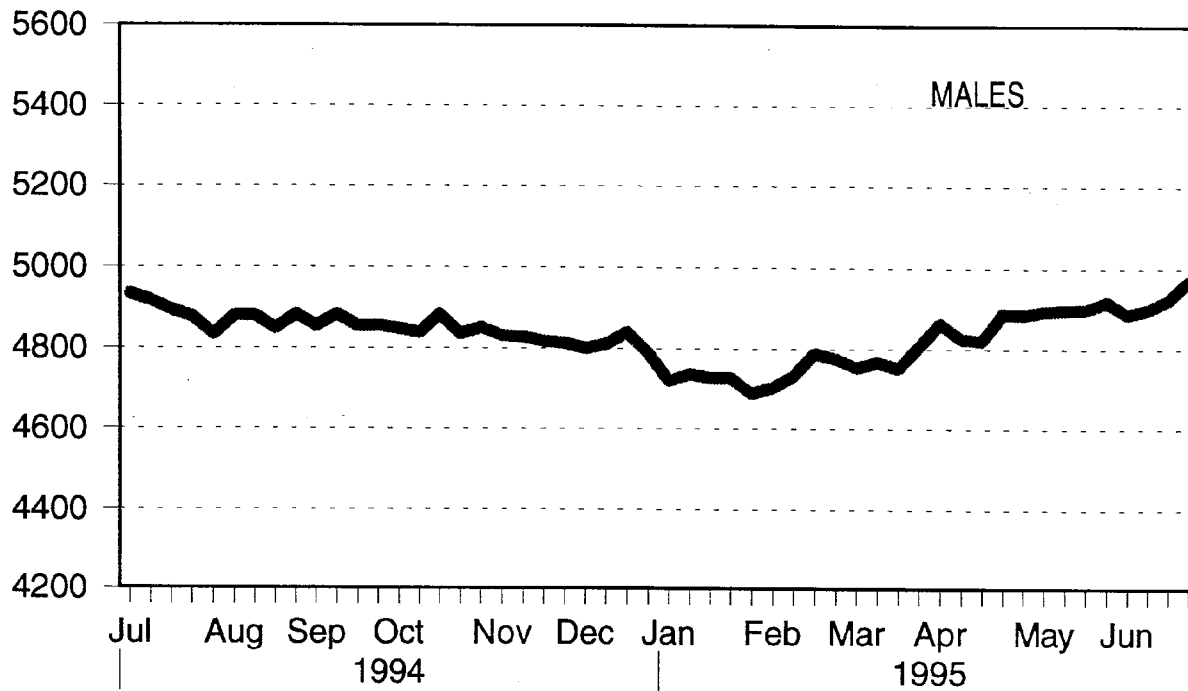
Date	Unsentenced* Inmates			Sentenced# Inmates			Total Inmates
	Male	Female	Total Unsentenced Inmates	Male	Female	Total Sentenced Inmates	
1 January, 1995	1129	62	1191	4721	226	4947	6138
8 January, 1995	1112	72	1184	4737	216	4953	6137
15 January, 1995	1130	78	1208	4728	208	4936	6144
22 January, 1995	1132	71	1203	4728	207	4935	6138
29 January, 1995	1151	72	1223	4690	197	4887	6110
5 February, 1995	1172	71	1243	4705	207	4912	6155
12 February, 1995	1175	67	1242	4733	205	4938	6180
19 February, 1995	1147	66	1213	4789	206	4995	6208
26 February, 1995	1174	65	1239	4775	203	4978	6217
5 March, 1995	1175	64	1239	4754	211	4965	6204
12 March, 1995	1202	61	1263	4767	223	4990	6253
19 March, 1995	1217	64	1281	4752	216	4968	6249
26 March, 1995	1177	63	1240	4806	229	5035	6275
2 April, 1995	1188	62	1250	4862	236	5098	6348
9 April, 1995	1194	61	1255	4825	233	5058	6313
16 April, 1995	1197	55	1252	4820	230	5050	6302
23 April, 1995	1178	58	1236	4887	227	5114	6350
30 April, 1995	1173	65	1238	4884	219	5103	6341
7 May, 1995,	1178	69	1247	4893	227	5120	6367
14 May, 1995	1199	73	1272	4895	229	5124	6396
21 May, 1995	1179	69	1248	4897	235	5132	6380
28 May, 1995	1193	71	1264	4915	240	5155	6419
4 June, 1995	1213	73	1286	4885	243	5128	6414
11 June, 1995	1199	69	1268	4897	244	5141	6409
18 June, 1995	1180	69	1249	4920	240	5160	6409
25 June, 1995	1130	71	1201	4968	238	5206	6407

*"Unsentenced" includes remands, trials, appellants and deportees

#"Sentenced" includes sentenced to term imprisonment, life sentence, forensic patient and fine defaulters

Number of Sentenced Inmates in Full-time Custody

(Sentenced includes: Fine Defaulters, Lifers and Forensic Patients.)

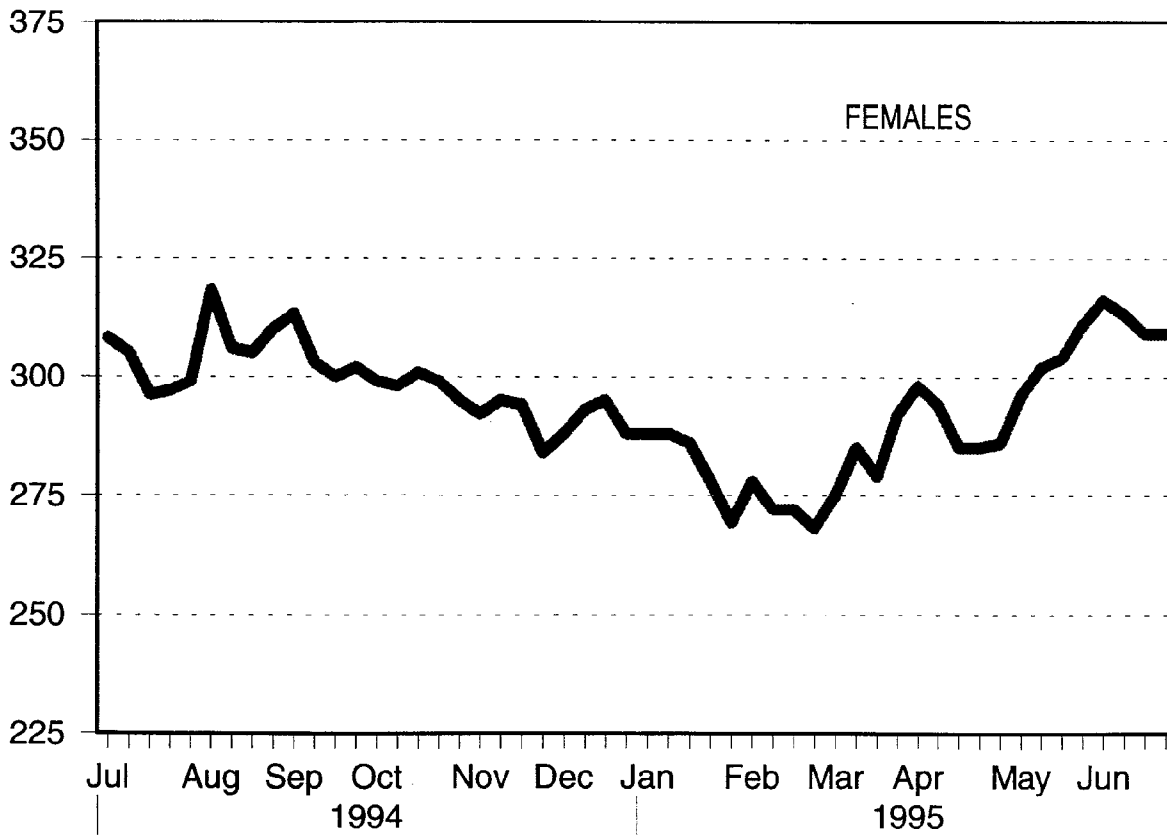
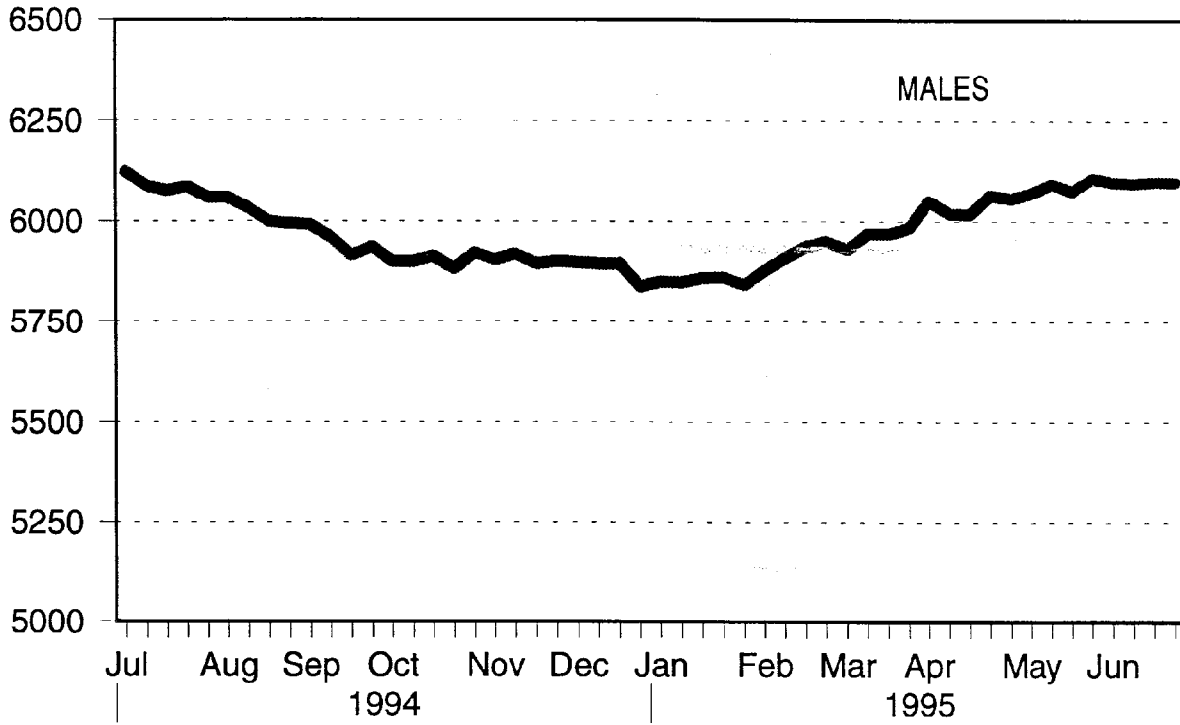


Research & Statistics, NSW Department of Corrective Services.

Weekly States July 1994 - June 1995
Sex of Inmates in Full-time Custody

Date	Males Inmates	Females Inmates	Total Inmates	Date	Males Inmates	Females Inmates	Total Inmates
3 July, 1994	6124	308	6432	1 January, 1995	5850	288	6138
10 July, 1994	6089	305	6394	8 January, 1995	5849	288	6137
17 July, 1994	6077	296	6373	15 January, 1995	5858	286	6144
24 July, 1994	6087	297	6384	22 January, 1995	5860	278	6138
31 July, 1994	6059	299	6358	29 January, 1995	5841	269	6110
7 August, 1994	6059	318	6377	5 February, 1995	5877	278	6155
14 August, 1994	6032	306	6338	12 February, 1995	5908	272	6180
21 August, 1994	5998	305	6303	19 February, 1995	5936	272	6208
28 August, 1994	5995	310	6305	26 February, 1995	5949	268	6217
4 September, 1994	5990	313	6303	5 March, 1995	5929	275	6204
11 September, 1994	5959	303	6262	12 March, 1995	5969	284	6253
18 September, 1994	5914	300	6214	19 March, 1995	5969	280	6249
25 September, 1994	5935	302	6247	26 March, 1995	5983	292	6275
2 October, 1994	5899	299	6198	2 April, 1995	6050	298	6348
9 October, 1994	5899	298	6197	9 April, 1995	6019	294	6313
16 October, 1994	5912	301	6213	16 April, 1995	6017	285	6302
23 October, 1994	5881	299	6180	23 April, 1995	6065	285	6350
30 October, 1994	5920	295	6215	30 April, 1995	6057	284	6341
6 November, 1994	5903	292	6195	7 May, 1995,	6071	296	6367
13 November, 1994	5918	295	6213	14 May, 1995	6094	302	6396
20 November, 1994	5895	294	6189	21 May, 1995	6076	304	6380
27 November, 1994	5901	284	6185	28 May, 1995	6108	311	6419
4 December, 1994	5898	288	6186	4 June, 1995	6098	316	6414
11 December, 1994	5895	293	6188	11 June, 1995	6096	313	6409
18 December, 1994	5894	295	6187	18 June, 1995	6100	309	6409
25 December, 1994	5837	288	6125	25 June, 1995	6098	309	6407

Number of Inmates in Full-time Custody



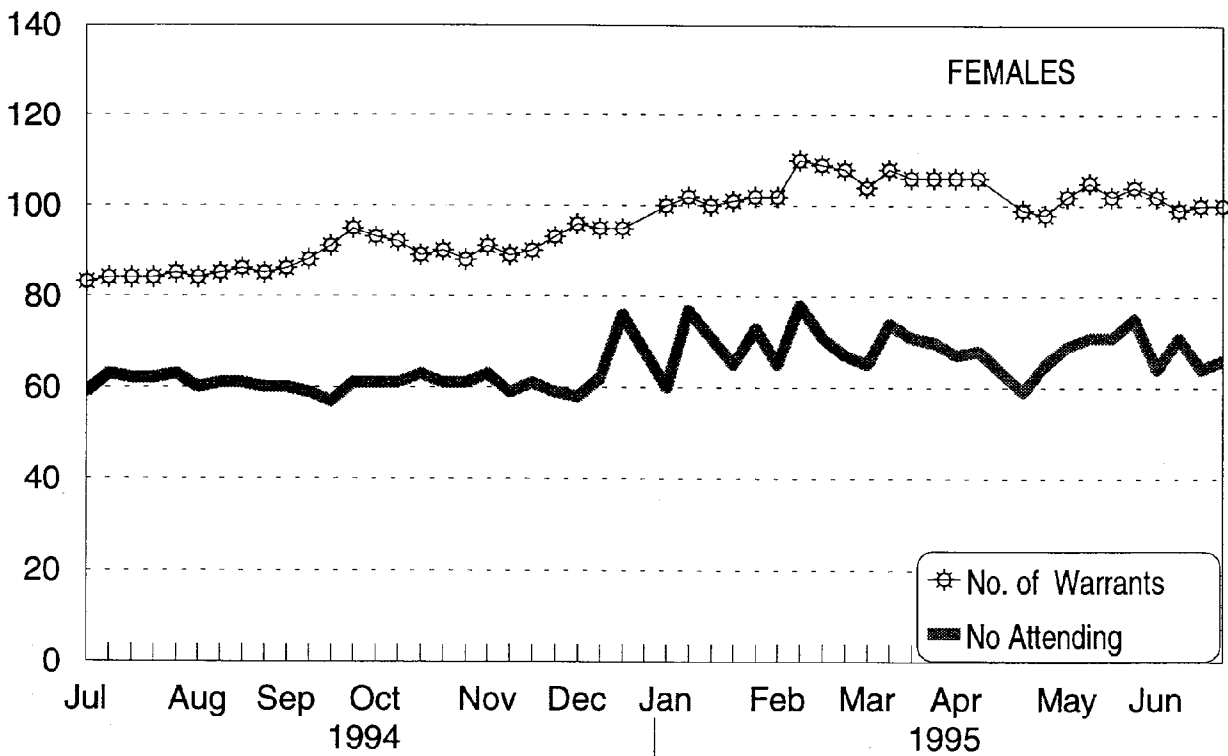
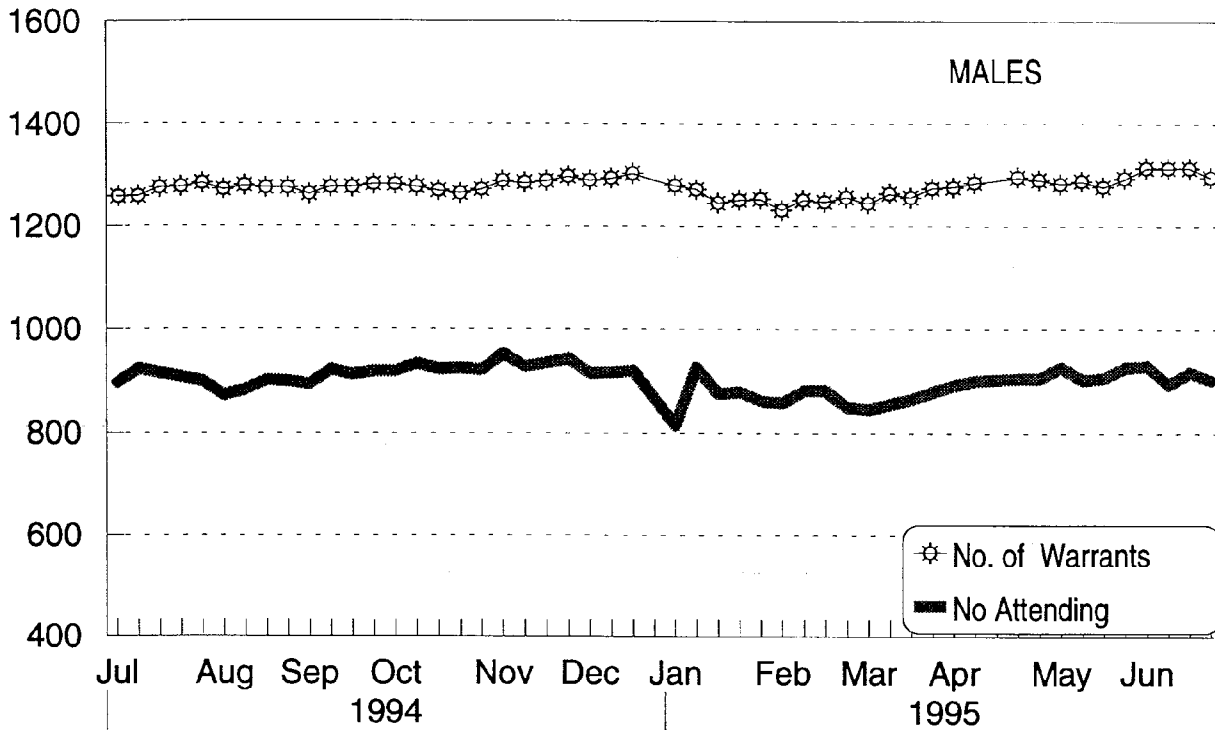
Research & Statistics, NSW Department of Corrective Services.

Weekly States July 1994 - June 1995
Periodic Detainees

Date	No. of Warrants		No. Attending		Date	No. of Warrants		No. Attending	
	M	F	M	F		M	F	M	F
3 July, 1994	1257	83	896	59	1 January, 1995	1279	100	815	60
10 July, 1994	1258	84	923	63	8 January, 1995	1272	102	925	77
17 July, 1994	1275	84	915	62	15 January, 1995	1245	100	876	71
24 July, 1994	1277	84	907	62	22 January, 1995	1250	101	879	65
31 July, 1994	1284	85	899	63	29 January, 1995	1252	102	862	73
7 August, 1994	1271	84	872	60	5 February, 1995	1230	102	857	65
14 August, 1994	1279	85	883	61	12 February, 1995	1250	110	881	78
21 August, 1994	1275	86	902	61	19 February, 1995	1247	109	881	71
28 August, 1994	1275	85	899	60	26 February, 1995	1256	108	850	67
4 September, 1994	1259	85	919	63	5 March, 1995	1244	104	845	65
11 September, 1994	1262	86	894	60	12 March, 1995	1261	108	855	74
18 September, 1994	1276	88	922	59	19 March, 1995	1251	107	860	72
25 September, 1994	1276	91	912	57	26 March, 1995	1274	106	879	70
2 October, 1994	1282	93	918	61	2 April, 1995	1276	106	891	67
9 October, 1994	1277	92	933	61	9 April, 1995	1282	106	898	68
16 October, 1994	1269	89	922	63	16 April, 1995	#	#	#	#
23 October, 1994	1264	90	924	61	23 April, 1995	1295	99	906	59
30 October, 1994	1271	88	921	61	30 April, 1995	1292	98	905	65
6 November, 1994	1288	91	951	63	7 May, 1995,	1283	102	926	69
13 November, 1994	1285	89	927	59	14 May, 1995	1288	105	902	71
20 November, 1994	1289	90	934	61	21 May, 1995	1277	102	906	71
27 November, 1994	1297	93	942	59	28 May, 1995	1294	104	926	75
4 December, 1994	1290	96	914	58	4 June, 1995	1304	102	925	64
11 December, 1994	1294	95	916	62	11 June, 1995	1314	99	893	71
18 December, 1994	1303	95	920	76	18 June, 1995	1315	100	917	64
25 December, 1994	#	#	#	#	25 June, 1995	1309	100	910	66

NOTE: # Periodic Detention Centres closed over Christmas and Easter.

Number of Periodic Detainees



NB: Periodic Detention Centres were closed over Christmas and Easter

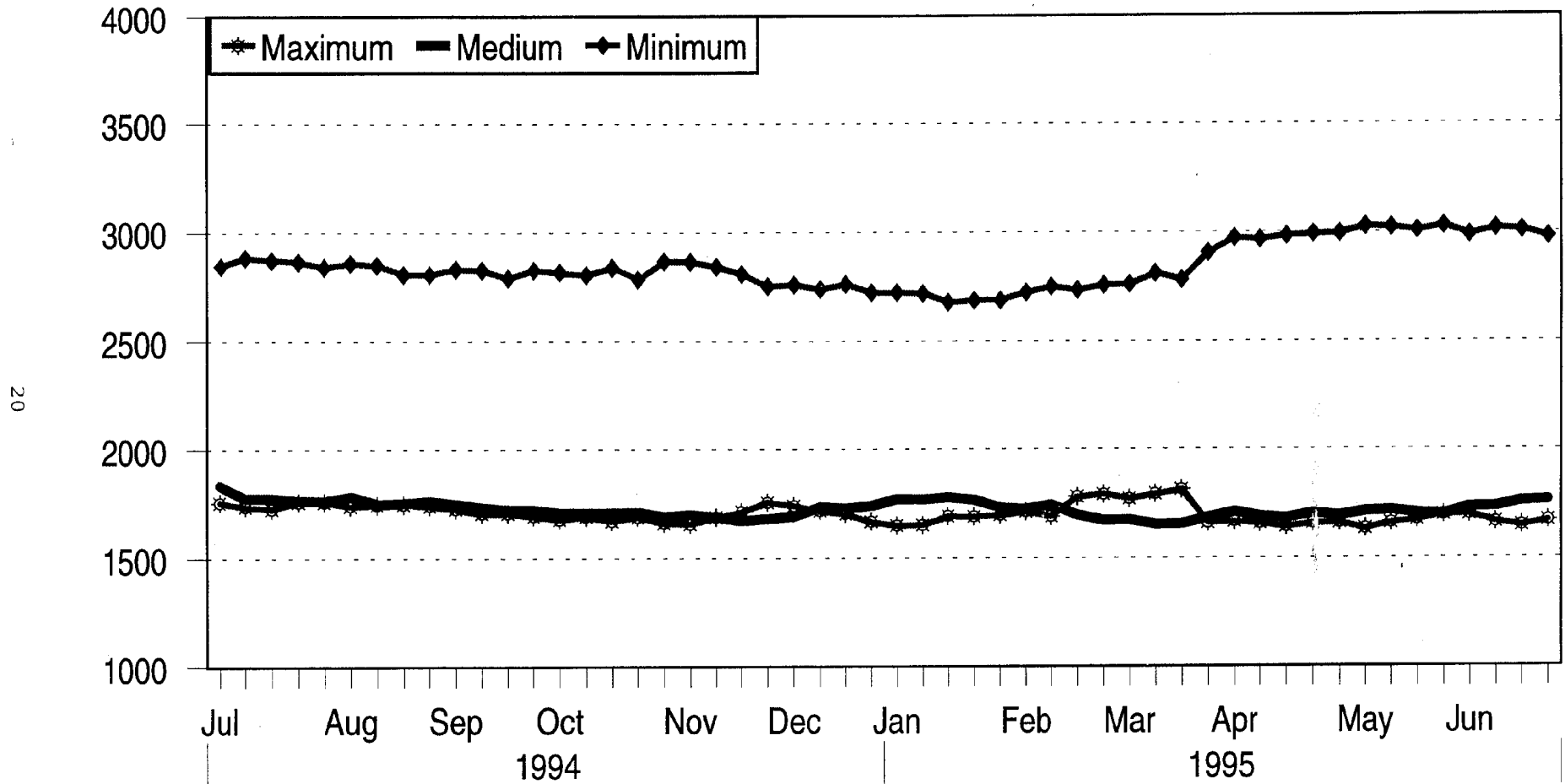
Research & Statistics, NSW Department of corrective Services

Weekly States July 1994 - June 1995
Classification of Institution in Which Inmates are Held

Date	Security			Total	Date	Security			Total
	Max	Med	Min			Max	Med	Min	
3 July, 1994	1755	1835	2842	6432	1 January, 1995	1647	1771	2720	6138
10 July, 1994	1736	1777	2881	6394	8 January, 1995	1651	1770	2716	6137
17 July, 1994	1726	1776	2871	6373	15 January, 1995	1690	1779	2675	6144
24 July, 1994	1757	1764	2863	6384	22 January, 1995	1688	1767	2683	6138
31 July, 1994	1757	1763	2838	6358	29 January, 1995	1695	1730	2685	6110
7 August, 1994	1738	1783	2856	6377	5 February, 1995	1711	1725	2719	6155
14 August, 1994	1744	1748	2846	6338	12 February, 1995	1689	1744	2747	6180
21 August, 1994	1746	1753	2804	6303	19 February, 1995	1779	1697	2732	6208
28 August, 1994	1738	1762	2805	6305	26 February, 1995	1791	1673	2753	6217
4 September, 1994	1725	1750	2828	6303	5 March, 1995	1771	1674	2759	6204
11 September, 1994	1704	1734	2824	6262	12 March, 1995	1792	1652	2809	6253
18 September, 1994	1704	1722	2788	6214	19 March, 1995	1813	1657	2779	6249
25 September, 1994	1690	1722	2825	6237	26 March, 1995	1660	1685	2930	6275
2 October, 1994	1676	1708	2814	6198	2 April, 1995	1666	1711	2971	6348
9 October, 1994	1688	1708	2801	6197	9 April, 1995	1657	1690	2966	6313
16 October, 1994	1669	1709	2835	6213	16 April, 1995	1640	1680	2982	6302
23 October, 1994	1687	1711	2782	6180	23 April, 1995	1656	1704	2990	6350
30 October, 1994	1658	1691	2866	6215	30 April, 1995	1659	1690	2992	6341
6 November, 1994	1655	1678	2862	6195	7 May, 1995	1631	1713	3023	6367
13 November, 1994	1685	1687	2841	6213	14 May, 1995	1659	1718	3019	6396
20 November, 1994	1711	1672	2806	6189	21 May, 1995	1672	1703	3005	6380
27 November, 1994	1755	1680	2750	6185	28 May, 1995	1696	1696	3027	6419
4 December, 1994	1739	1690	2757	6186	4 June, 1995	1697	1731	2986	6414
11 December, 1994	1716	1736	2736	6188	11 June, 1995	1662	1733	3014	6409
18 December, 1994	1702	1728	2759	6189	18 June, 1995	1645	1757	3007	6409
25 December, 1994	1665	1740	2720	6125	25 June, 1995	1668	1763	2976	6407

NOTE: All inmates at Parklea (complex of minimum, medium and maximum security) and all inmates at Mulawa are counted as medium security

Institutional Security Inmates in Full-time Custody



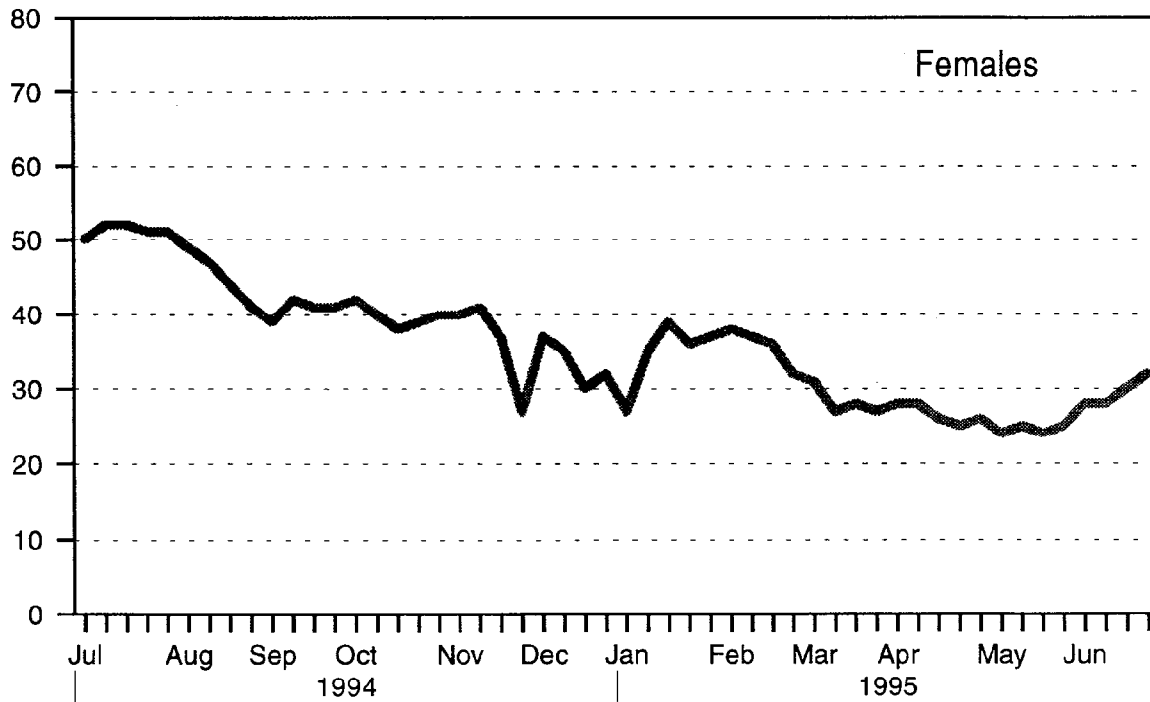
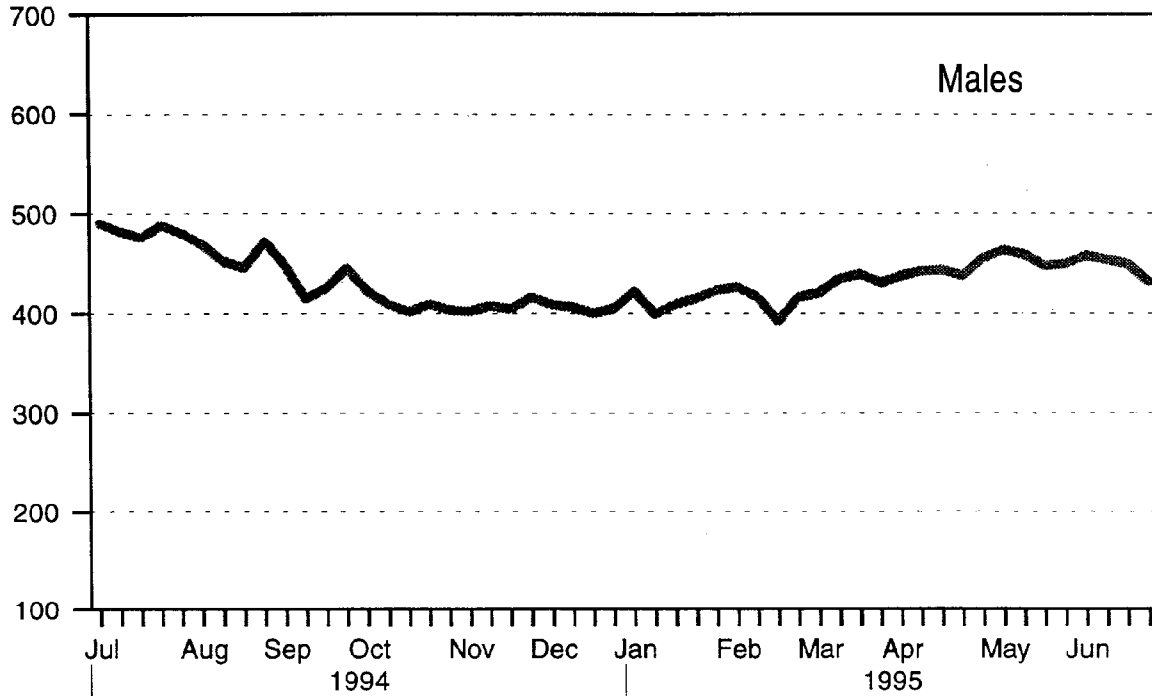
All inmates at Parklea (complex of minimum, medium and maximum security) and all inmates at Mulawa are counted as minimum security.

Research & Statistics, NSW Department of Corrective Services.

Weekly States July 1994 - June 1995
Number of Appellants in Full-time Custody

Date	Males Appellants	Females Appellants	Total Appellants	Date	Male Appellants	Females Appellants	Total Appellants
3 July, 1994	490	50	540	1 January, 1995	422	27	449
10 July, 1994	482	52	534	8 January, 1995	399	35	434
17 July, 1994	475	52	527	15 January, 1995	409	39	448
24 July, 1994	488	51	539	22 January, 1995	415	36	451
31 July, 1994	480	51	531	29 January, 1995	423	37	460
7 August, 1994	468	49	517	5 February, 1995	426	38	464
14 August, 1994	452	47	499	12 February, 1995	416	37	453
21 August, 1994	445	44	489	19 February, 1995	392	36	428
28 August, 1994	417	41	458	26 February, 1995	416	32	448
4 September, 1994	447	39	486	5 March, 1995	420	31	451
11 September, 1994	414	42	456	12 March, 1995	434	26	460
18 September, 1994	425	41	466	19 March, 1995	439	28	467
25 September, 1994	445	41	486	26 March, 1995	430	27	457
2 October, 1994	422	42	464	2 April, 1995	437	28	465
9 October, 1994	409	40	449	9 April, 1995	442	28	470
16 October, 1994	401	38	439	16 April, 1995	443	26	469
23 October, 1994	409	39	448	23 April, 1995	437	25	462
30 October, 1994	403	40	443	30 April, 1995	455	26	481
6 November, 1994	402	40	442	7 May, 1995,	463	24	487
13 November, 1994	407	41	448	14 May, 1995	458	25	483
20 November, 1994	404	37	441	21 May, 1995	447	24	471
27 November, 1994	416	27	443	28 May, 1995	449	25	474
4 December, 1994	408	37	445	4 June, 1995	457	28	485
11 December, 1994	406	35	441	11 June, 1995	453	28	481
18 December, 1994	400	30	430	18 June, 1995	449	30	479
25 December, 1994	405	32	437	25 June, 1995	431	32	463

Number of Appellants in Full-time Custody



Research & Statistics, NSW Department of Corrective Services.

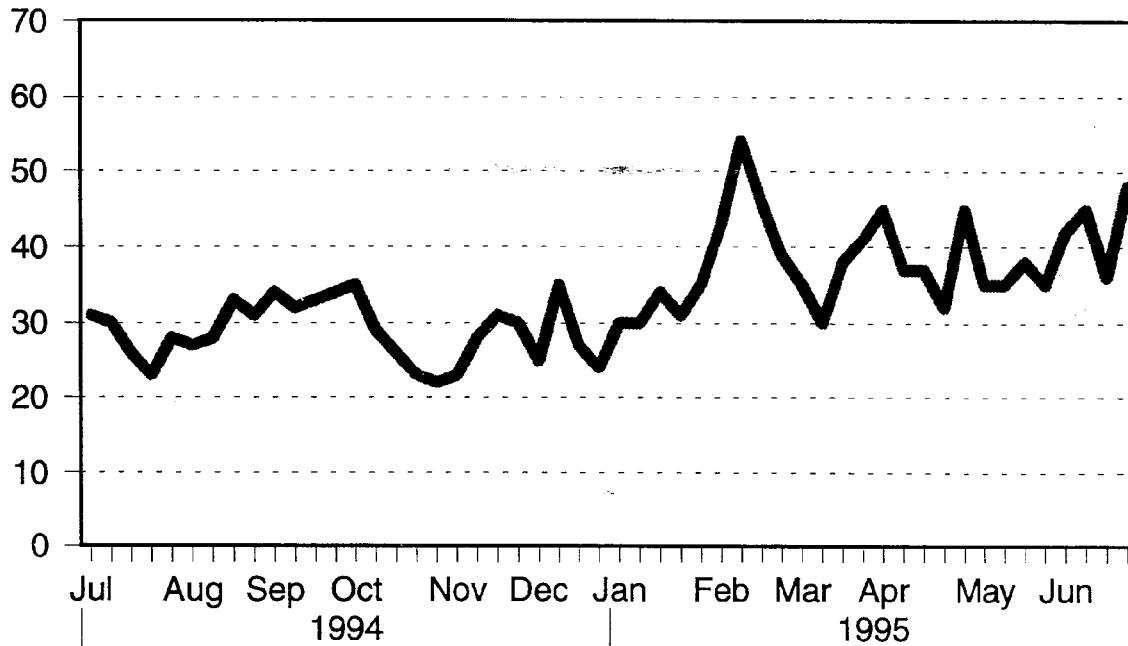
Weekly States July 1994 - June 1995
Segregation and Protection

Date	Segregation			Protection			Date	Segregation			Protection		
	M	F	Total	M	F	Total		M	F	Total	M	F	Total
3 July, 1994	30	1	31	443	8	451	1 January, 1995	29	1	30	559	9	568
10 July, 1994	29	1	30	449	9	458	8 January, 1995	28	2	30	580	8	588
17 July, 1994	25	1	26	426	9	435	15 January, 1995	33	1	34	571	7	578
24 July, 1994	22	1	23	426	9	435	22 January, 1995	29	2	31	563	9	572
31 July, 1994	27	1	28	426	9	435	29 January, 1995	34	1	35	615	9	624
7 August, 1994	26	1	27	393	9	402	5 February, 1995	42	1	43	611	8	619
14 August, 1994	26	2	28	404	9	413	12 February, 1995	52	3	55	573	10	583
21 August, 1994	29	4	33	409	8	417	19 February, 1995	45	1	46	608	10	618
28 August, 1994	26	5	31	396	8	404	26 February, 1995	37	2	39	575	8	583
4 September, 1994	30	4	34	402	8	410	5 March, 1995	34	1	35	602	8	610
11 September, 1994	29	3	32	394	8	402	12 March, 1995	30	0	30	618	8	626
18 September, 1994	30	3	33	401	10	411	19 March, 1995	38	0	38	578	0	578
25 September, 1994	30	4	34	404	15	419	26 March, 1995	40	1	41	628	12	640
2 October, 1994	32	3	35	406	13	419	2 April, 1995	44	1	45	643	12	655
9 October, 1994	25	4	29	413	15	428	9 April, 1995	35	2	37	628	12	640
16 October, 1994	24	2	26	406	16	422	16 April, 1995	34	3	37	609	12	621
23 October, 1994	21	2	23	440	15	455	23 April, 1995	30	2	32	632	13	645
30 October, 1994	20	2	22	444	12	456	30 April, 1995	41	4	45	640	13	653
6 November, 1994	21	2	23	456	13	469	7 May, 1995,	31	4	35	662	13	675
13 November, 1994	26	2	28	470	13	483	14 May, 1995	33	2	35	658	13	671
20 November, 1994	29	2	31	498	10	508	21 May, 1995	36	2	38	632	11	643
27 November, 1994	29	1	30	493	9	502	28 May, 1995	33	2	35	651	9	660
4 December, 1994	22	3	25	511	10	521	4 June, 1995	39	3	42	654	12	666
11 December, 1994	34	1	35	539	11	550	11 June, 1995	44	1	45	654	9	663
18 December, 1994	26	1	27	551	9	560	18 June, 1995	35	1	36	662	9	671
25 December, 1994	23	1	24	561	9	570	25 June, 1995	47	1	48	666	12	678

NB: On segregation: for good order and discipline. On protection: at inmate's own request.

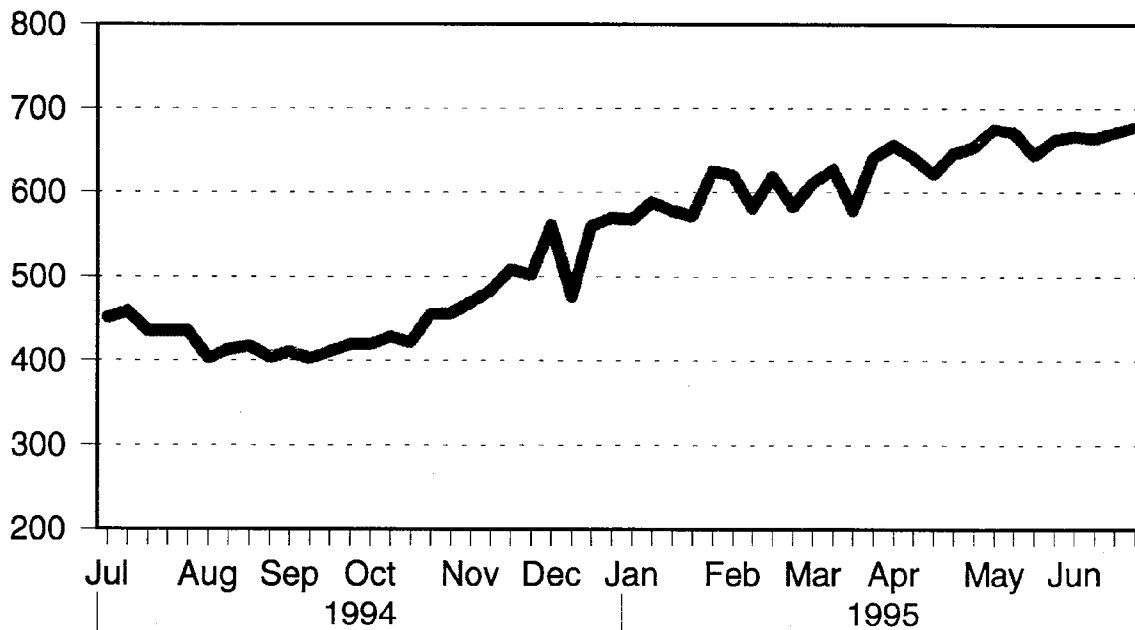
Number of Inmates on Segregation

(Segregation = For good order and discipline)



Number of Inmates on Protection

(On protection = At Inmate's own request)



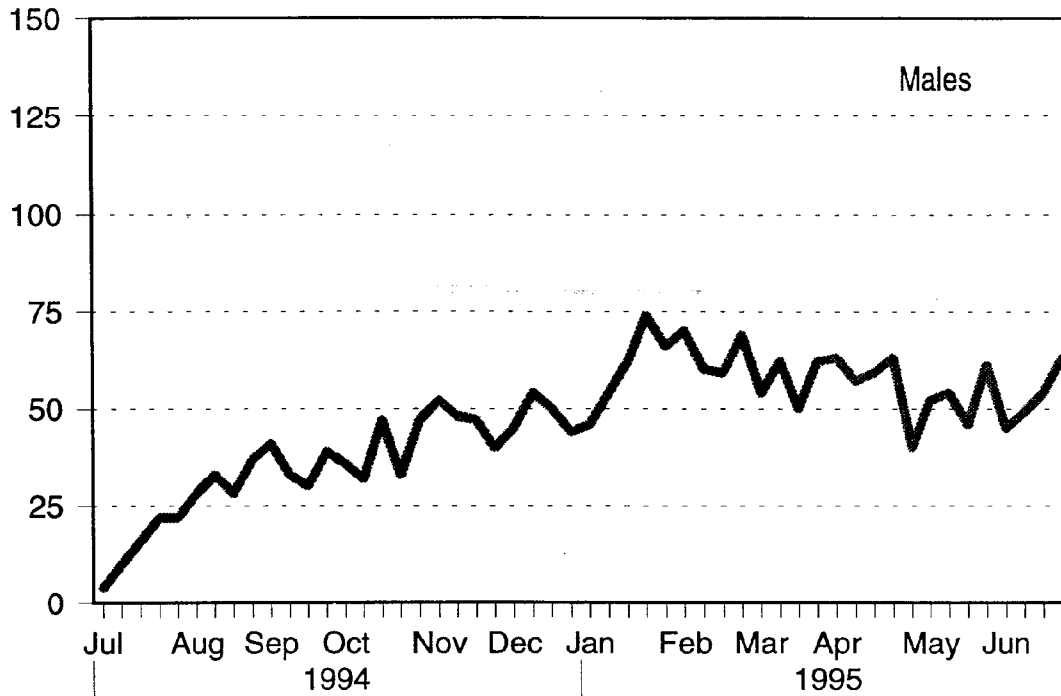
Research & Statistics, NSW Department of Corrective Services.

Weekly States July 1994 - June 1995
Number of Fine Defaulters in Full-time Custody

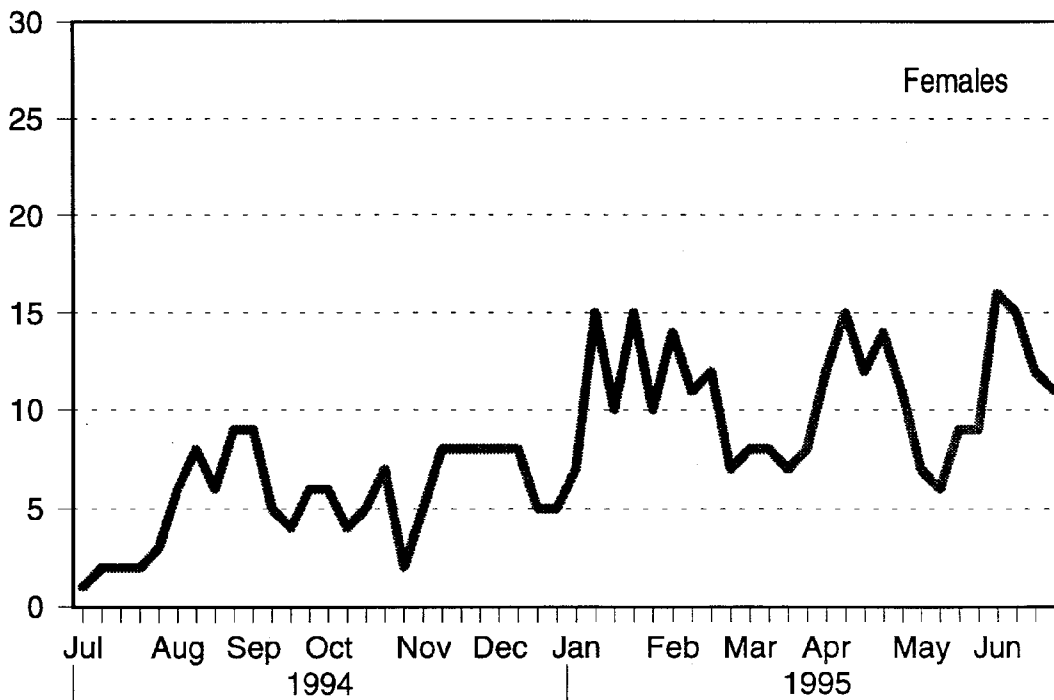
Date	Male Fine Defaulters	Female Fine Defaulters	Total Fine Defaulters	Date	Male Fine Defaulters	Female Fine Defaulters	Total Fine Defaulters
3 July, 1994	4	1	5	1 January, 1995	46	7	53
10 July, 1994	10	2	12	8 January, 1995	54	15	69
17 July, 1994	16	2	18	15 January, 1995	62	10	72
24 July, 1994	22	2	24	22 January, 1995	74	15	89
31 July, 1994	22	3	25	29 January, 1995	66	10	76
7 August, 1994	28	6	34	5 February, 1995	70	14	84
14 August, 1994	33	8	41	12 February, 1995	60	11	71
21 August, 1994	28	6	34	19 February, 1995	59	12	71
28 August, 1994	37	9	46	26 February, 1995	69	7	76
4 September, 1994	41	9	50	5 March, 1995	54	8	62
11 September, 1994	33	5	38	12 March, 1995	62	8	70
18 September, 1994	30	4	34	19 March, 1995	50	7	57
25 September, 1994	39	6	45	26 March, 1995	62	8	70
2 October, 1994	36	6	42	2 April, 1995	63	12	75
9 October, 1994	32	4	36	9 April, 1995	57	15	72
16 October, 1994	47	5	52	16 April, 1995	59	12	71
23 October, 1994	33	7	40	23 April, 1995	63	14	77
30 October, 1994	47	2	49	30 April, 1995	40	11	51
6 November, 1994	52	5	57	7 May, 1995,	52	7	59
13 November, 1994	48	8	56	14 May, 1995	54	6	60
20 November, 1994	47	8	55	21 May, 1995	46	9	55
27 November, 1994	40	8	48	28 May, 1995	61	9	70
4 December, 1994	45	8	53	4 June, 1995	45	16	61
11 December, 1994	54	8	62	11 June, 1995	49	15	64
18 December, 1994	50	5	55	18 June, 1995	54	12	66
25 December, 1994	44	5	49	25 June, 1995	63	11	74

NOTE: A moratorium was placed on the execution of fine default orders from 31st March to 30th June, 1994.

Number of Fine Defaulters



Note: A Moratorium was placed on the execution of fine default orders from 31st March to 30th June 1994.



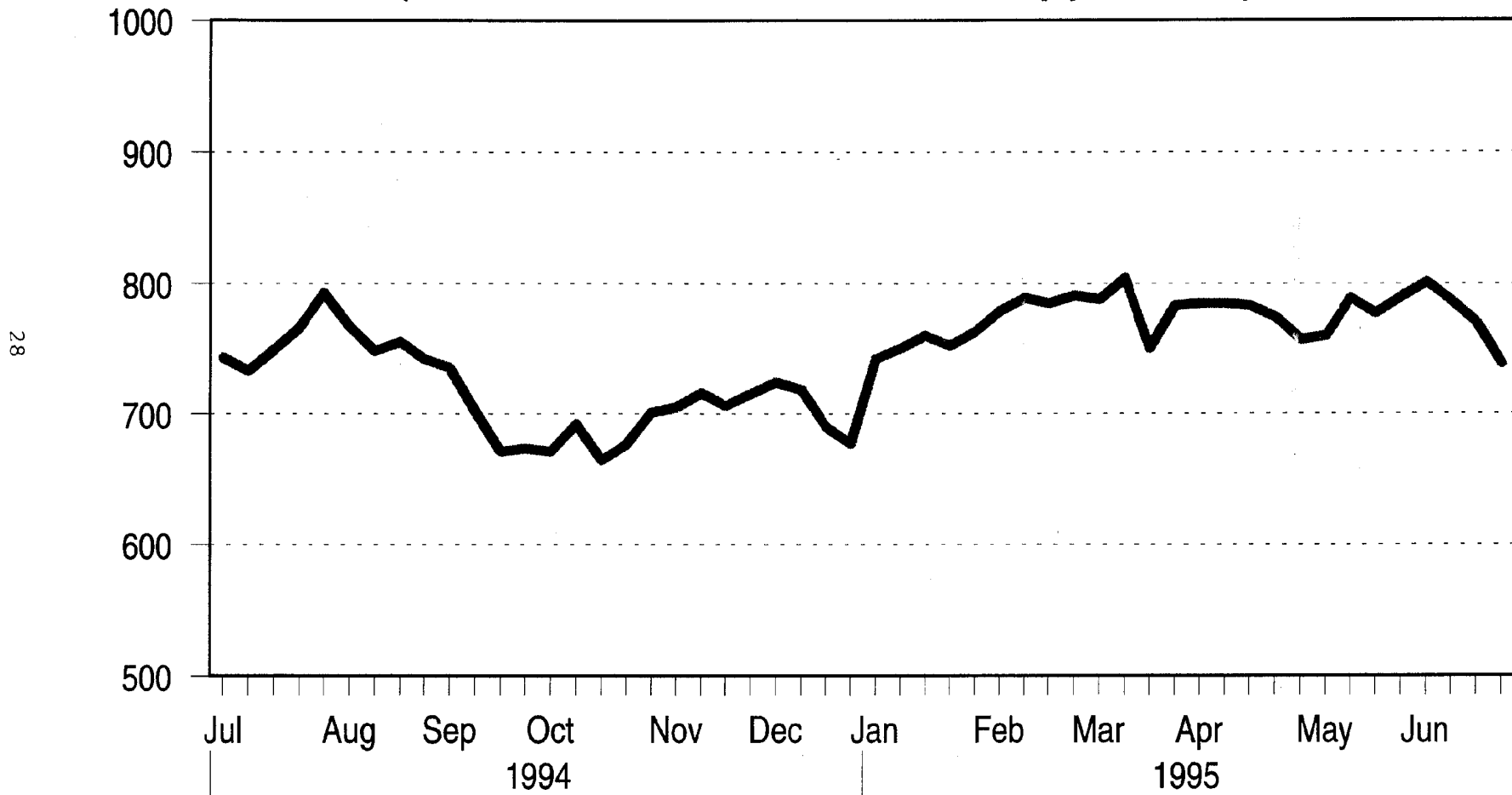
Research & Statistics, NSW Department of Corrective Services.

Weekly States July 1994 - June 1995
Number of Unsentenced Inmates Less Appellants

Date	Unsentenced	Appellants	Unsentenced less Appellants	Date	Unsentenced	Appellants	Unsentenced Less Appellants
3 July, 1994	1283	540	743	1 January, 1995	1191	449	742
10 July, 1994	1267	534	733	8 January, 1995	1184	434	750
17 July, 1994	1276	527	749	15 January, 1995	1208	448	760
24 July, 1994	1305	539	766	22 January, 1995	1203	451	752
31 July, 1994	1324	531	793	29 January, 1995	1223	460	763
7 August, 1994	1284	517	767	5 February, 1995	1243	464	779
14 August, 1994	1247	499	748	12 February, 1995	1242	453	789
21 August, 1994	1244	489	755	19 February, 1995	1213	428	785
28 August, 1994	1200	458	742	26 February, 1995	1239	448	791
4 September, 1994	1221	486	735	5 March, 1995	1239	451	788
11 September, 1994	1158	456	702	12 March, 1995	1263	460	803
18 September, 1994	1137	466	671	19 March, 1995	1281	467	814
25 September, 1994	1159	486	673	26 March, 1995	1240	457	783
2 October, 1994	1135	464	671	2 April, 1995	1250	465	785
9 October, 1994	1141	449	692	9 April, 1995	1255	470	785
16 October, 1994	1103	439	664	16 April, 1995	1252	469	783
23 October, 1994	1124	448	676	23 April, 1995	1236	462	774
30 October, 1994	1144	443	701	30 April, 1995	1238	481	757
6 November, 1994	1147	442	705	7 May, 1995,	1247	487	760
13 November, 1994	1164	448	716	14 May, 1995	1272	483	789
20 November, 1994	1147	441	706	21 May, 1995	1248	471	777
27 November, 1994	1158	443	715	28 May, 1995	1264	474	790
4 December, 1994	1169	445	724	4 June, 1995	1286	485	801
11 December, 1994	1159	441	718	11 June, 1995	1268	481	787
18 December, 1994	1120	430	690	18 June, 1995	1249	479	770
25 December, 1994	1114	437	677	25 June, 1995	1201	463	738

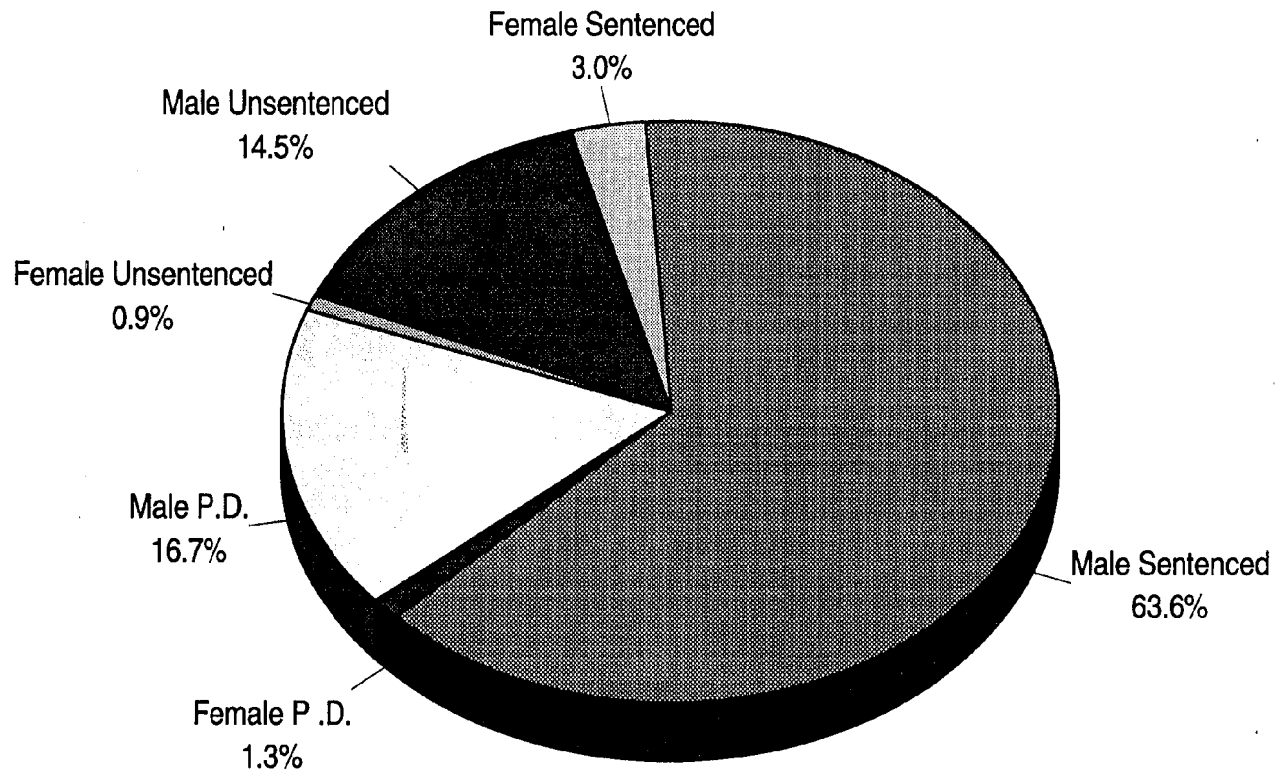
Remand, Trial and Deportee Inmates

(Unsentenced inmates less appellants)



Research & Statistics, NSW Department of Corrective Services.

Profile on last Sunday of June 1995

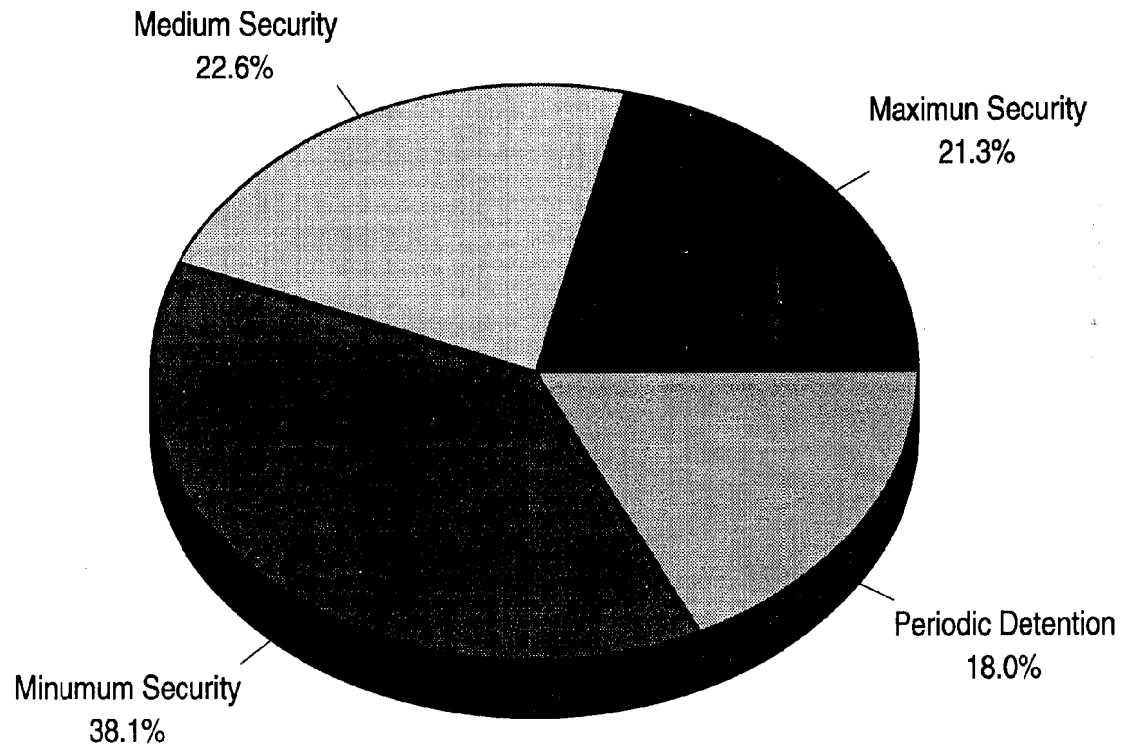


P.D.= Periodic Detention

Research & Statistics, NSW Department of Corrective Services

Institutional Security

Percentage on last Sunday of June 1995

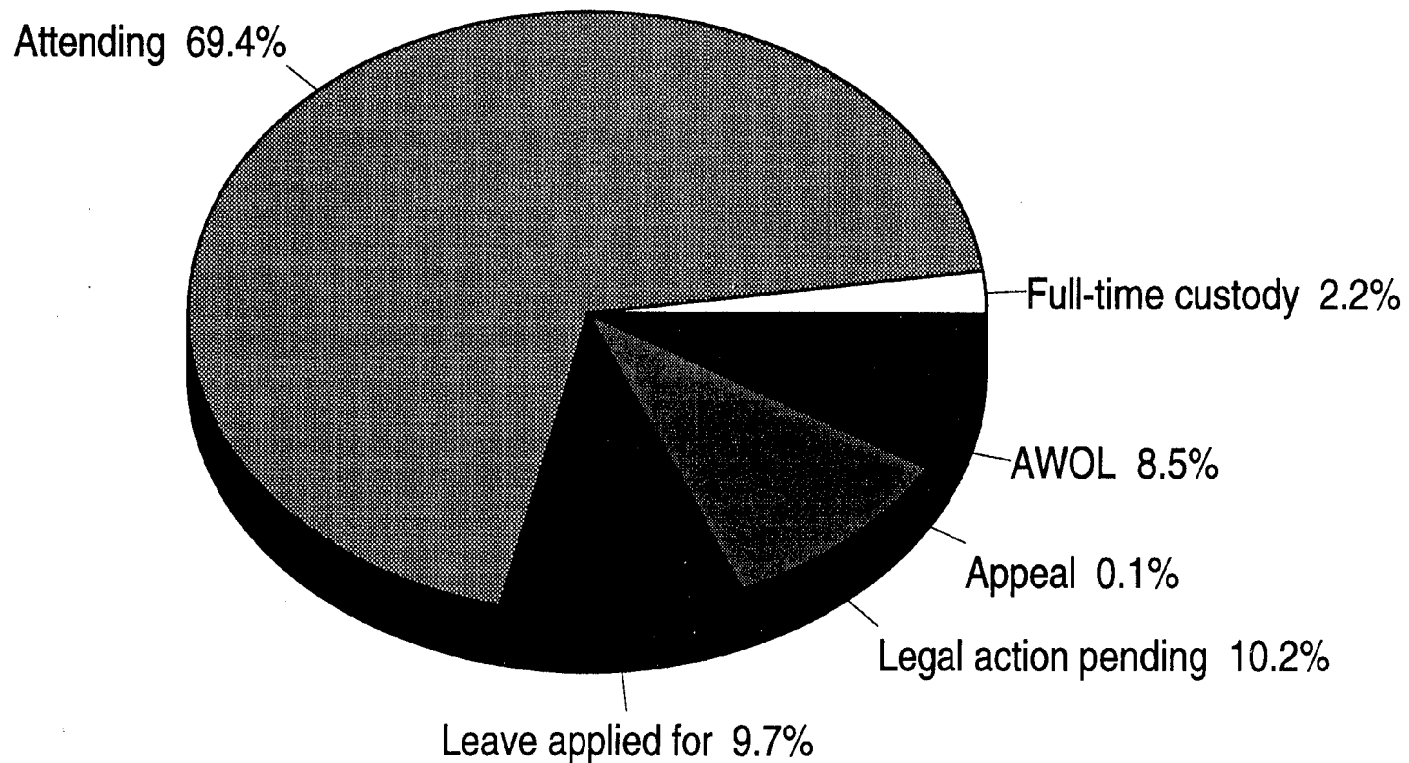


Note: All Inmates at Parklea (Complex of Minimum, Medium & Maximum Security) and all inmates at Mulawa are counted here as medium security

Research & Statistics, NSW Department of Corrective Services

Periodic Detainees

Attendance and Reasons for Non-attendance for last period in June 1995



Research & Statistics, NSW Department of Corrective Services

WEEKLY STATES AT MIDNIGHT ON: 3RD JULY, 1994

FULL-TIME INMATES	INMATES				Total	*Accommodation in				Beds +/- **	Segreg- ation		Protect- ion	
	Males		Females			Single Cells	Multi Cells	Dorm	Total Beds		M	F	M	F
	U/S	S	U/S	S										
Goulburn (Main)	77	323	-	-	400	314	55	-	369	-31	8	-	258	-
Maitland	51	106	-	-	157	51	76	-	127	-30	1	-	42	-
Long Bay Complex														
- Special Purpose Centre	15	39	-	3	57	60	-	-	60	3	-	-	-	-
M - L. B. Hospital - Med.	8	20	-	-	28	16	12	-	28	0	-	-	-	-
A - L. B. Hospital - Psych.	27	56	-	1	84	84	-	-	84	0	-	-	-	-
X - Prince Henry Annexe	1	5	-	-	6	-	-	7	7	1	-	-	-	-
I - Reception & Industrial	88	324	-	-	412	410	2	-	412	0	11	-	39	-
M - Special Care C. C.														
U - Special Care Unit	2	16	-	-	18	27	-	-	27	9	-	-	-	-
M - Crisis Support Unit	4	7	1	1	13	-	18	-	18	5	-	-	-	-
- Lifestyles Unit	1	6	-	-	7	-	8	-	8	1	-	-	-	-
- Remand Centre	298	19	-	-	317	216	2	8	226	-91	-	-	50	-
Lithgow	52	204	-	-	256	298	-	-	298	42	4	-	28	-
Sub-total	624	1125	1	5	1755	1476	173	15	1664	-91	24	0	417	0
M Bathurst (Main)	51	167	-	-	218	220	4	-	224	6	-	-	9	-
E Broken Hill	9	32	-	1	42	14	14	-	28	-14	-	-	-	-
D Cooma	20	135	-	-	155	112	-	8	120	-35	-	-	-	-
I Grafton (Main)	40	80	-	1	121	42	-	12	54	-67	-	-	8	-
U Mulawa	-	-	76	144	220	162	52	8	222	2	-	1	-	8
M Parramatta	208	211	-	-	419	292	-	-	292	-127	3	-	-	-
M Parklea N.W.R.	36	244	-	-	292	405	-	-	405	113	-	-	2	-
- Work Release	-	12	-	-	-	-	-	-	-	-	-	-	-	-
June (Medium)	45	270	-	-	315	368	16	-	384	69	3	-	-	-
Tamworth	12	41	-	-	53	-	66	-	66	13	-	-	5	-
Sub-total	421	1192	76	146	1835	1615	152	28	1795	-40	6	1	24	8
M Berrima	7	56	-	-	63	57	4	-	61	-2	-	-	-	-
Emu Plains	9	132	-	-	141	116	2	-	118	-23	-	-	-	-
Norma Parker N.W.R.	-	-	12	51	80	16	46	28	90	10	-	-	-	-
- Work Release	-	-	1	16	-	-	-	-	-	-	-	-	-	-
M Silverwater N.W.R.	18	220	-	-	342	45	408	-	453	111	-	-	-	-
I - Work Release	2	102	-	-	-	-	-	-	-	-	-	-	-	-
N Goulburn (X-Wing)	3	109	-	-	112	90	-	-	90	-22	-	-	-	-
I Bathurst (X-Wing)	2	107	-	-	109	89	-	-	89	-20	-	-	-	-
M Grafton (C-Unit)	6	113	-	-	119	96	-	-	96	-23	-	-	-	-
U Training Centre (Long Bay)	7	271	-	-	278	211	-	-	211	-67	-	-	-	-
M St Heliers	-	218	-	-	218	184	-	5	189	-29	-	-	-	-
Glen Innes	-	126	-	-	126	154	-	-	154	28	-	-	-	-
Mannus	3	148	-	-	151	81	48	12	141	-10	-	-	-	-
Oberon	2	91	-	-	93	80	-	-	80	-13	-	-	-	-
Kirkconnell	10	187	-	-	197	70	60	-	130	-67	-	-	-	-
June (Minimum)	17	209	-	-	226	228	-	-	228	2	-	-	-	-
John Morony	15	159	-	-	174	232	18	-	250	76	-	-	-	-
Cessnock	47	366	-	-	413	407	50	-	457	44	-	-	2	-
Sub-total	148	2614	13	67	2842	2156	636	45	2837	-5	0	0	2	0
TOTAL FULL-TIME	1193	4931	90	218	6432	5247	961	88	6296	-136	30	1	443	8

* Design accommodation in uncrowded conditions - amended 15th May, 1994.

N.W.R.=Non Work Release

**Difference between number of beds in uncrowded conditions and number of inmates.

S=Sentenced inmates (not including appellants) U/S=Unsentenced inmates (including appellants, trials, remandees and deportees)

Included in the above figures are:

Number of fine defaulters (in gaol for no other reason)	4 M +	1 F =	5	(including 0 at June)
Number of inmates on appeal	490 M +	50 F =	540	(including 62 at June)
Number of inmates on remand or for trial	697 M +	40 F =	737	(including 0 at June)
Number of juveniles under 18 years	1 M +	0 F =	1	(including 0 at June)
Total full-time inmates =	5891 (at DOCS institutions)	+	541 (at June)	= 6432

***** Research & Statistics *****

WEEKLY STATES FOR THE WEEK ENDING: 3RD JULY, 1994

PERIODIC DETAINEES (P.D.'S)	People with warrants			Attending			No.*	Beds*
	Stage1	Stage2	Total	Stage1	Stage2	Total	Beds	+/-
Campbelltown	73	23	96	35	22	57	52	17
Emu Plains	46	23	69	29	23	52	66	37
Grafton	47	31	78	38	29	67	50	12
Malabar	122	43	165	78	43	121	164	86
Malabar Mid-week	57	29	86	37	29	66	164	127
Parramatta	44	14	58	28	11	39	33	5
St Heliers	20	20	40	11	20	31	25	14
Silverwater	125	58	183	79	56	135	110	31
Silverwater Mid-week	102	38	140	54	36	90	110	56
Tomago	119	31	150	77	31	108	96	19
Windsor	83	25	108	54	25	79	60	6
Administration**	4	0	4	0	0	0	0	0
Administration Midweek	1	0	1	0	0	0	0	0
Wollongong	63	16	79	36	15	51	82	46
Total Males	906	351	1257	556	340	896	1012	456

Merinda	66	17	83	42	17	59	52	10
Administration**	0	0	0	0	0	0	0	0
Total Females	66	17	83	42	17	59	52	10

TOTAL P.D.'S	972	368	1340	598	357	955	1064	466
---------------------	------------	------------	-------------	------------	------------	------------	-------------	------------

* Number of free beds calculated on the numbers attending in Stage 1 and assuming uncrowded conditions.

Amended 28th June, 1992.

** Administration Stage 1 comprises detainees who have failed to attend for more than 8 consecutive weeks.

** Administration Stage 2 comprises Stage 2 detainees not attached to any particular PDC.

The total number of people with warrants comprises:

Number attending		896	59	955
Number in full-time custody	sentenced-one month or less	1 M +	0 F =	1
	sentenced-more than one month	14 M +	0 F =	14
	remand	15 M +	0 F =	15
Number on appeal with bail		10 M +	0 F =	10
Number absent - leave applied for	- sick	91 M +	12 F =	103
	- other	17 M +	0 F =	17
Total absent - reasons known		148 M +	12 F =	160
Number absent without leave	- no reason given	88 M +	3 F =	91
	- legal action pending	125 M +	9 F =	134
Total absent without leave		213 M +	12 F =	225
Total number of people with warrants		1257 M +	83 F =	1340

WEEKLY STATES FOR THE WEEK ENDING:

3RD JULY, 1994

	Full-time Inmates		All Inmates Full-time + PD	
	No.	Date	No.	Date
Highest weekly state, year ending previous week	6526	24/10/93	7796	5/6/94
Lowest weekly state, year ending previous week	6255	30/1/94	7525	30/1/94
State for previous week	6409	26/6/94	7753	26/6/94
State for this week	6432	3/7/94	7772	3/7/94

WEEKLY STATES AT MIDNIGHT ON: 7TH AUGUST, 1994

FULL-TIME INMATES	INMATES				Total	*Accommodation in				Beds +/- **	Segregation		Protection	
	Males		Females			Single Cells	Multi Cells	Dorm	Total Beds		M	F	M	F
	U/S	S	U/S	S										
M Goulburn (Main)	63	309	-	-	372	314	55	-	369	-3	7	-	237	-
M Maitland	60	110	-	-	170	51	76	-	127	-43	3	-	41	-
M Long Bay Complex														
M - Special Purpose Centre	16	38	1	1	56	60	-	-	60	4	-	-	-	-
M - L. B. Hospital - Med.	6	23	-	-	29	16	12	-	28	-1	-	-	-	-
M - L. B. Hospital - Psych.	26	51	1	-	78	84	-	-	84	6	-	-	-	-
M - Prince Henry Annexe	-	3	-	-	3	-	-	7	7	4	-	-	-	-
M - Reception & Industrial	74	343	-	-	417	410	2	-	412	-5	10	-	28	-
M - Special Care C. C.														
M - Special Care Unit	2	19	-	-	21	27	-	-	27	6	-	-	-	-
M - Crisis Support Unit	4	8	-	1	13	-	18	-	18	5	-	-	-	-
M - Lifestyles Unit	2	6	-	-	8	-	8	-	8	0	-	-	-	-
M - Remand Centre	313	18	-	-	331	216	2	8	226	-105	-	-	49	-
M Lithgow	46	194	-	-	240	298	-	-	298	58	-	-	22	-
Sub-total	612	1122	2	2	1738	1476	173	15	1664	-74	20	0	377	0
M Bathurst (Main)	37	157	-	-	194	220	4	-	224	30	2	-	2	-
M Broken Hill	9	30	-	1	40	14	14	-	28	-12	1	-	-	-
E Cooma	15	145	-	-	160	112	-	8	120	-40	-	-	-	-
D Grafton (Main)	38	68	1	3	110	42	-	12	54	-56	-	-	8	-
I Mulawa	-	-	89	146	235	162	52	8	222	-13	-	1	-	9
U Parramatta	172	182	-	-	354	292	-	-	292	-62	-	-	-	-
M Parklea N.W.R.	96	218	-	-	327	405	-	-	405	78	2	-	2	-
- Work Release	-	13	-	-	-	-	-	-	-	-	-	-	-	-
Junee (Medium)	37	270	-	-	307	368	16	-	384	77	-	-	-	-
Tamworth	19	37	-	-	56	-	66	-	66	10	1	-	4	-
Sub-total	423	1120	90	150	1783	1615	152	28	1795	12	6	1	16	9
M Berrima	6	59	-	-	65	57	4	-	61	-4	-	-	-	-
M Emu Plains	8	129	-	-	137	116	2	-	118	-19	-	-	-	-
M Norma Parker N.W.R.	-	-	8	46	74	16	46	28	90	16	-	-	-	-
- Work Release	-	-	4	16	-	-	-	-	-	-	-	-	-	-
M Silverwater N.W.R.	18	237	-	-	371	45	408	-	453	82	-	-	-	-
I - Work Release	2	114	-	-	-	-	-	-	-	-	-	-	-	-
N Goulburn (X-Wing)	4	108	-	-	112	90	-	-	90	-22	-	-	-	-
I Bathurst (X-Wing)	6	109	-	-	115	89	-	-	89	-26	-	-	-	-
M Grafton (C-Unit)	4	112	-	-	116	96	-	-	96	-20	-	-	-	-
U Training Centre (Long Bay)	6	268	-	-	274	211	-	-	211	-63	-	-	-	-
M St Heliers	-	215	-	-	215	184	-	5	189	-26	-	-	-	-
M Glen Innes	-	121	-	-	121	154	-	-	154	33	-	-	-	-
M Mannus	5	138	-	-	143	81	48	12	141	-2	-	-	-	-
M Oberon	2	83	-	-	85	80	-	-	80	-5	-	-	-	-
M Kirkconnell	7	186	-	-	193	70	60	-	130	-63	-	-	-	-
M Junee (Minimum)	18	202	-	-	220	228	-	-	228	8	-	-	-	-
M John Morony	16	177	-	-	193	232	18	-	250	57	-	-	-	-
M Cessnock	43	379	-	-	422	407	50	-	457	35	-	-	-	-
Sub-total	145	2637	12	62	2856	2156	636	45	2837	-19	0	0	0	0
TOTAL FULL-TIME	1180	4879	104	214	6377	5247	961	88	6296	-81	26	1	393	9

* Design accommodation in uncrowded conditions - amended 15th May, 1994.

N.W.R.=Non Work Release

**Difference between number of beds in uncrowded conditions and number of inmates.

S=Sentenced inmates (not including appellants) U/S=Unsentenced inmates (including appellants, trials, remandees and deportees)

Included in the above figures are:

Number of fine defaulters (in gaol for no other reason) 28 M + 6 F = 34 (including 0 at Junee)

Number of inmates on appeal 468 M + 49 F = 517 (including 55 at Junee)

Number of inmates on remand or for trial 708 M + 55 F = 763 (including 0 at Junee)

Number of juveniles under 18 years 2 M + 0 F = 2 (including 0 at Junee)

Total full-time inmates = 5850 (at DOCS institutions) + 527 (at Junee) = 6377

***** Research & Statistics *****

WEEKLY STATES FOR THE WEEK ENDING: 7TH AUGUST, 1994

PERIODIC DETAINEES (P.D.'S)	People with warrants			Attending			No.*	Beds*
	Stage1	Stage2	Total	Stage1	Stage2	Total	Beds	+/-
Campbelltown	81	28	109	33	24	57	52	19
Emu Plains	52	22	74	28	21	49	66	38
Grafton	49	29	78	38	28	66	50	12
Malabar	126	38	164	75	37	112	164	89
Malabar Mid-week	57	31	88	36	30	66	164	128
Parramatta	47	6	53	31	6	37	33	2
St Heliers	24	19	43	16	19	35	25	9
Silverwater	132	65	197	80	57	137	110	30
Silverwater Mid-week	99	37	136	53	34	87	110	57
Tomago	117	31	148	80	30	110	96	16
Windsor	80	25	105	46	25	71	60	14
Administration**	2	0	2	1	0	1	0	-1
Administration Midweek	0	0	0	0	0	0	0	0
Wollongong	56	18	74	27	17	44	82	55
Total Males	922	349	1271	544	328	872	1012	468

Merinda	66	18	84	42	18	60	52	10
Administration**	0	0	0	0	0	0	0	0
Total Females	66	18	84	42	18	60	52	10

TOTAL P.D.'S	988	367	1355	586	346	932	1064	478
---------------------	------------	------------	-------------	------------	------------	------------	-------------	------------

* Number of free beds calculated on the numbers attending in Stage 1 and assuming uncrowded conditions.
Amended 28th June, 1992.

** Administration Stage 1 comprises detainees who have failed to attend for more than 8 consecutive weeks.

** Administration Stage 2 comprises Stage 2 detainees not attached to any particular PDC.

The total number of people with warrants comprises:

Number attending		872	60	932
Number in full-time custody				
	sentenced-one month or less	0 M +	0 F =	0
	sentenced-more than one month	16 M +	0 F =	16
	remand	14 M +	0 F =	14
Number on appeal with bail		15 M +	0 F =	15
Number absent - leave applied for	- sick	97 M +	10 F =	107
	- other	21 M +	1 F =	22
Total absent - reasons known		163 M +	11 F =	174
Number absent without leave	- no reason given	105 M +	4 F =	109
	- legal action pending	131 M +	9 F =	140
Total absent without leave		236 M +	13 F =	249
Total number of people with warrants		1271 M +	84 F =	1355

WEEKLY STATES FOR THE WEEK ENDING: 7TH AUGUST, 1994

	Full-time Inmates		All Inmates Full-time + PD	
	No.	Date	No.	Date
Highest weekly state, year ending previous week	6526	24/10/93	7796	5/6/94
Lowest weekly state, year ending previous week	6255	30/1/94	7525	30/1/94
State for previous week	6358	31/7/94	7727	31/7/94
State for this week	6377	7/8/94	7732	7/8/94

WEEKLY STATES AT MIDNIGHT ON: 4TH SEPTEMBER, 1994

FULL-TIME INMATES	INMATES				*Accommodation in				Beds +/- **	Segregation		Protection		
	Males		Females		Total	Single Cells	Multi Cells	Dorm		Total Beds	M	F	M	F
	U/S	S	U/S	S										
M Goulburn (Main)	57	300	-	-	357	314	55	-	369	12	1	-	220	-
M Maitland	63	110	-	-	173	51	76	-	127	-46	3	-	44	-
M Long Bay Complex														
M - Special Purpose Centre	19	37	1	1	58	60	-	-	60	2	-	-	-	-
M - L. B. Hospital - Med.	6	22	-	-	28	16	12	-	28	0	-	-	-	-
M - L. B. Hospital - Psych.	31	53	1	-	85	84	-	-	84	-1	-	-	-	-
X - Prince Henry Annexe	2	5	-	1	8	-	-	7	7	-1	-	-	-	-
I - Reception & Industrial	86	315	-	-	401	410	2	-	412	11	12	-	47	-
M - Special Care C. C.														
U - Special Care Unit	1	19	-	-	20	27	-	-	27	7	-	-	-	-
M - Crisis Support Unit	6	5	-	1	12	-	18	-	18	6	-	-	-	-
M - Lifestyles Unit	2	4	-	-	6	-	8	-	8	2	-	-	-	-
M - Remand Centre	299	21	-	-	320	216	2	8	226	-94	1	-	56	-
M Lithgow	45	212	-	-	257	298	-	-	298	41	4	-	20	-
Sub-total	617	1103	2	3	1725	1476	173	15	1664	-61	21	0	387	0
M Bathurst (Main)	40	128	-	-	168	220	4	-	224	56	2	-	3	-
M Broken Hill	8	29	-	1	38	14	14	-	28	-10	-	-	-	-
E Cooma	16	144	-	-	160	112	-	8	120	-40	-	-	1	-
D Grafton (Main)	34	86	-	4	124	42	-	12	54	-70	-	-	6	-
I Mulawa	-	-	71	155	226	162	52	8	222	-4	-	4	-	8
U Parramatta	167	203	-	-	370	292	-	-	292	-78	2	-	-	-
M Parklea N.W.R.	72	223	-	-	305	405	-	-	405	100	-	-	-	-
M - Work Release	-	10	-	-	-	-	-	-	-	-	-	-	-	-
M Junee (Medium)	35	276	-	-	311	368	16	-	384	73	3	-	-	-
M Tamworth	9	39	-	-	48	-	66	-	66	18	1	-	4	-
Sub-total	381	1138	71	160	1750	1615	152	28	1795	45	8	4	14	8
M Berrima	4	60	-	-	64	57	4	-	61	-3	-	-	-	-
M Emu Plains	9	118	-	-	127	116	2	-	118	-9	-	-	-	-
M Norma Parker N.W.R.	-	-	7	51	77	16	46	28	90	13	-	-	-	-
M - Work Release	-	-	4	15	-	-	-	-	-	-	-	-	-	-
M Silverwater N.W.R.	17	278	-	-	364	45	408	-	453	89	-	-	-	-
M - Work Release	2	67	-	-	-	-	-	-	-	-	-	-	-	-
N Goulburn (X-Wing)	3	103	-	-	106	90	-	-	90	-16	-	-	-	-
I Bathurst (X-Wing)	5	109	-	-	114	89	-	-	89	-25	-	-	-	-
M Grafton (C-Unit)	3	107	-	-	110	96	-	-	96	-14	-	-	-	-
U Training Centre (Long Bay)	6	280	-	-	286	211	-	-	211	-75	-	-	-	-
M St Heliers	-	232	-	-	232	184	-	5	189	-43	-	-	-	-
M Glen Innes	-	107	-	-	107	154	-	-	154	47	-	-	-	-
M Mannus	5	140	-	-	145	81	48	12	141	-4	-	-	-	-
M Oberon	2	82	-	-	84	80	-	-	80	-4	-	-	-	-
M Kirkconnell	8	187	-	-	195	70	60	-	130	-65	-	-	-	-
M Junee (Minimum)	16	197	-	-	213	228	-	-	228	15	-	-	-	-
M John Morony	15	177	-	-	192	232	18	-	250	58	-	-	1	-
M Cessnock	44	368	-	-	412	407	50	-	457	45	1	-	-	-
Sub-total	139	2612	11	66	2828	2156	636	45	2837	9	1	0	1	0
TOTAL FULL-TIME	1137	4853	84	229	6303	5247	961	88	6296	-7	30	4	402	8

* Design accommodation in uncrowded conditions - amended 15th May, 1994.

N.W.R.=Non Work Release

**Difference between number of beds in uncrowded conditions and number of inmates.

S=Sentenced inmates (not including appellants) U/S=Unsentenced inmates (including appellants, trials, remandees and deportees)

Included in the above figures are:

Number of fine defaulters (in gaol for no other reason) 41 M + 9 F = 50 (including 0 at Junee)

Number of inmates on appeal 447 M + 39 F = 486 (including 51 at Junee)

Number of inmates on remand or for trial 685 M + 45 F = 730 (including 0 at Junee)

Number of juveniles under 18 years 0 M + 0 F = 0 (including 0 at Junee)

Total full-time inmates = 5779 (at DOCS institutions) + 524 (at Junee) = 6303

***** Research & Statistics *****

WEEKLY STATES FOR THE WEEK ENDING: 4TH SEPTEMBER, 1994

PERIODIC DETAINEES (P.D.'S)	People with warrants			Attending			No.*	Beds*
	Stage1	Stage2	Total	Stage1	Stage2	Total	Beds	+/-
Campbelltown	73	30	103	39	27	66	52	13
Emu Plains	49	21	70	32	20	52	66	34
Grafton	44	36	80	39	35	74	50	11
Malabar	126	34	160	74	33	107	164	90
Malabar Mid-week	58	35	93	41	35	76	164	123
Parramatta	40	6	46	24	6	30	33	9
St Heliers	24	18	42	17	18	35	25	8
Silverwater	147	61	208	93	56	149	110	17
Silverwater Mid-week	92	45	137	56	42	98	110	54
Tomago	114	31	145	78	31	109	96	18
Windsor	66	32	98	38	32	70	60	22
Administration**	3	0	3	1	0	1	0	-1
Administration Midweek	1	0	1	0	0	0	0	0
Wollongong	51	22	73	32	20	52	82	50
Total Males	888	371	1259	564	355	919	1012	448

Merinda	65	20	85	43	20	63	52	9
Administration**	0	0	0	0	0	0	0	0
Total Females	65	20	85	43	20	63	52	9

TOTAL P.D.'S	953	391	1344	607	375	982	1064	457
---------------------	------------	------------	-------------	------------	------------	------------	-------------	------------

* Number of free beds calculated on the numbers attending in Stage 1 and assuming uncrowded conditions.
Amended 28th June, 1992.

** Administration Stage 1 comprises detainees who have failed to attend for more than 8 consecutive weeks.

** Administration Stage 2 comprises Stage 2 detainees not attached to any particular PDC.

The total number of people with warrants comprises:

Number attending		919	63	982
Number in full-time custody	sentenced-one month or less	0 M +	0 F =	0
	sentenced-more than one month	8 M +	0 F =	8
	remand	15 M +	1 F =	16
Number on appeal with bail		9 M +	0 F =	9
Number absent - leave applied for	- sick	91 M +	7 F =	98
	- other	26 M +	2 F =	28
Total absent - reasons known		149 M +	10 F =	159
Number absent without leave	-- no reason given	63 M +	4 F =	67
	- legal action pending	128 M +	8 F =	136
Total absent without leave		191 M +	12 F =	203
Total number of people with warrants		1259 M +	85 F =	1344

WEEKLY STATES FOR THE WEEK ENDING: 4TH SEPTEMBER, 1994

	Full-time Inmates		All Inmates Full-time + PD	
	No.	Date	No.	Date
Highest weekly state, year ending previous week	6526	24/10/93	7796	5/6/94
Lowest weekly state, year ending previous week	6255	30/1/94	7525	30/1/94
State for previous week	6305	28/8/94	7665	28/8/94
State for this week	6303	4/9/94	7647	4/9/94

WEEKLY STATES AT MIDNIGHT ON: 2ND OCTOBER, 1994

FULL-TIME INMATES		INMATES				*Accommodation in				Beds +/- **	Segreg- ation		Protect- ion		
		Males		Females		Total	Single Cells	Multi Cells	Dorm		Total Beds	M	F	M	F
		U/S	S	U/S	S										
	Goulburn (Main)	46	314	-	-	360	314	55	-	369	9	10	-	221	-
	Maitland	58	112	-	-	170	51	76	-	127	-43	5	-	37	-
	Long Bay Complex														
	- Special Purpose Centre	19	37	1	1	58	60	-	-	60	2	-	-	-	-
M	- L. B. Hospital - Med.	5	22	-	-	27	16	12	-	28	1	-	-	-	-
A	- L. B. Hospital - Psych.	33	52	-	1	86	84	-	-	84	-2	-	-	-	-
X	- Prince Henry Annexe	2	2	-	-	4	-	-	7	7	3	-	-	-	-
I	- Reception & Industrial	75	296	-	-	371	410	2	-	412	41	12	-	56	-
M	- Special Care C. C.														
U	- Special Care Unit	-	22	-	-	22	27	-	-	27	5	-	-	-	-
M	- Crisis Support Unit	2	9	-	2	13	-	18	-	18	5	-	-	-	-
	- Lifestyles Unit	2	6	-	-	8	-	8	-	8	0	-	-	-	-
	- Remand Centre	288	24	-	-	312	216	2	8	226	-86	-	-	58	-
	Lithgow	47	198	-	-	245	298	-	-	298	53	3	-	21	-
	Sub-total	577	1094	1	4	1676	1476	173	15	1664	-12	30	0	393	0
	Bathurst (Main)	33	132	-	-	165	220	4	-	224	59	1	-	4	-
M	Broken Hill	9	29	-	1	39	14	14	-	28	-11	-	-	-	-
E	Cooma	15	145	-	-	160	112	-	8	120	-40	-	-	-	-
D	Grafton (Main)	37	76	-	1	114	42	-	12	54	-60	-	-	8	-
I	Mulawa			72	150	222	162	52	8	222	0	-	3	-	13
U	Parramatta	157	213	-	-	370	292	-	-	292	-78	-	-	-	-
M	Parklea N.W.R.	61	200	-	-	276	405	-	-	405	129	-	-	-	-
	- Work Release	-	15	-	-										
	Junee (Medium)	28	280	-	-	308	368	16	-	384	76	-	-	-	-
	Tamworth	6	48	-	-	54	-	66	-	66	12	-	-	-	-
	Sub-total	346	1138	72	152	1708	1615	152	28	1795	87	1	3	12	13
	Berrima	3	61	-	-	64	57	4	-	61	-3	-	-	-	-
	Emu Plains	4	103	-	-	107	116	2	-	118	11	-	-	-	-
	Norma Parker N.W.R.	-	-	7	42	70	16	46	28	90	20	-	-	-	-
	- Work Release	-	-	3	18										
M	Silverwater N.W.R.	10	233	-	-	364	45	408	-	453	89	-	-	-	-
I	- Work Release	3	118	-	-										
N	Goulburn (X-Wing)	3	105	-	-	108	90	-	-	90	-18	-	-	-	-
I	Bathurst (X-Wing)	5	109	-	-	114	89	-	-	89	-25	-	-	-	-
M	Grafton (C-Unit)	5	114	-	-	119	96	-	-	96	-23	-	-	-	-
U	Training Centre (Long Bay)	6	265	-	-	271	211	-	-	211	-60	-	-	-	-
M	St Heliers	-	221	-	-	221	184	-	5	189	-32	-	-	-	-
	Glen Innes	-	100	-	-	100	154	-	-	154	54	-	-	-	-
	Mannus	5	129	-	-	134	81	48	12	141	7	-	-	-	-
	Oberon	2	84	-	-	86	80	-	-	80	-6	-	-	-	-
	Kirkconnell	9	180	-	-	189	70	60	-	130	-59	-	-	-	-
	Junee (Minimum)	15	253	-	-	268	228	-	-	228	-40	1	-	-	-
	John Morony	16	165	-	-	181	232	18	-	250	69	-	-	-	-
	Cessnock	43	375	-	-	418	407	50	-	457	39	-	-	1	-
	Sub-total	129	2615	10	60	2814	2156	636	45	2837	23	1	0	1	0
	TOTAL FULL-TIME	1052	4847	83	216	6198	5247	961	88	6296	98	32	3	406	13

* Design accommodation in uncrowded conditions - amended 15th May, 1994.

N.W.R.=Non Work Release

**Difference between number of beds in uncrowded conditions and number of inmates.

S=Sentenced inmates (not including appellants) U/S=Unsentenced inmates (including appellants, trials, remandees and deportees)

Included in the above figures are:

Number of fine defaulters (in gaol for no other reason) 36 M + 6 F = 42 (including 0 at Junee)

Number of inmates on appeal 422 M + 42 F = 464 (including 43 at Junee)

Number of inmates on remand or for trial 625 M + 41 F = 666 (including 0 at Junee)

Number of juveniles under 18 years 0 M + 0 F = 0 (including 0 at Junee)

Total full-time inmates = 5622 (at DOCS institutions) + 576 (at Junee) = 6198

***** Research & Statistics *****

WEEKLY STATES FOR THE WEEK ENDING: 2ND OCTOBER, 1994

PERIODIC DETAINEES (P.D.'S)	People with warrants			Attending			No.*	Beds*
	Stage1	Stage2	Total	Stage1	Stage2	Total	Beds	+/-
Campbelltown	88	25	113	47	25	72	52	5
Emu Plains	42	22	64	26	19	45	66	40
Grafton	43	43	86	30	42	72	50	20
Malabar	122	38	160	76	38	114	164	88
Malabar Mid-week	55	34	89	28	34	62	164	136
Parramatta	39	6	45	17	6	23	33	16
St Heliers	27	16	43	20	16	36	25	5
Silverwater	146	68	214	81	64	145	110	29
Silverwater Mid-week	108	48	156	63	48	111	110	47
Tomago	102	40	142	72	40	112	96	24
Windsor	65	29	94	45	26	71	60	15
Administration**	3	0	3	1	0	1	0	-1
Administration Midweek	3	0	3	0	0	0	0	0
Wollongong	49	21	70	34	20	54	82	48
Total Males	892	390	1282	540	378	918	1012	472

Merinda	68	25	93	36	25	61	52	16
Administration**	0	0	0	0	0	0	0	0
Total Females	68	25	93	36	25	61	52	16

TOTAL P.D.'S	960	415	1375	576	403	979	1064	488
---------------------	------------	------------	-------------	------------	------------	------------	-------------	------------

* Number of free beds calculated on the numbers attending in Stage 1 and assuming uncrowded conditions.
Amended 28th June, 1992.

** Administration Stage 1 comprises detainees who have failed to attend for more than 8 consecutive weeks.

** Administration Stage 2 comprises Stage 2 detainees not attached to any particular PDC.

The total number of people with warrants comprises:

Number attending		918	61	979
Number in full-time custody				
	sentenced-one month or less	2 M +	0 F =	2
	sentenced-more than one month	13 M +	2 F =	15
	remand	11 M +	0 F =	11
Number on appeal with bail		7 M +	1 F =	8
Number absent - leave applied for	- sick	95 M +	10 F =	105
	- other	24 M +	3 F =	27
Total absent - reasons known		152 M +	16 F =	168
Number absent without leave	- no reason given	97 M +	5 F =	102
	- legal action pending	115 M +	11 F =	126
Total absent without leave		212 M +	16 F =	228
Total number of people with warrants		1282 M +	93 F =	1375

WEEKLY STATES FOR THE WEEK ENDING:

2ND OCTOBER, 1994

	Full-time Inmates		All Inmates Full-time + PD	
	No.	Date	No.	Date
Highest weekly state, year ending previous week	6526	24/10/93	7796	5/6/94
Lowest weekly state, year ending previous week	6214	18/9/94	7525	30/1/94
State for previous week (amended figure)	6237	25/9/94	7604	25/9/94
State for this week	6198	2/10/94	7573	2/10/94

WEEKLY STATES AT MIDNIGHT ON: 6TH NOVEMBER, 1994

FULL-TIME INMATES	INMATES					*Accommodation in				Beds +/- **	Segregation		Protection	
	Males		Females		Total	Single Cells	Multi Cells	Dorm	Total Beds		M	F	M	F
	U/S	S	U/S	S										
Goulburn (Main)	48	279	-	-	327	314	55	-	369	42	2	-	170	-
Maitland	53	110	-	-	163	51	76	-	127	-36	3	-	39	-
Long Bay Complex														
- Special Purpose Centre	17	36	1	1	55	60	-	-	60	5	-	-	-	-
M - L. B. Hospital - Med.	4	22	-	-	26	16	12	-	28	2	-	-	-	-
A - L. B. Hospital - Psych.	24	59	1	-	84	84	-	-	84	0	-	-	-	-
X - Prince Henry Annexe	2	3	-	-	5	-	-	7	7	2	-	-	-	-
I - Reception & Industrial	99	280	-	-	379	410	2	-	412	33	12	-	50	-
M - Special Care C. C.														
U - Special Care Unit	-	19	-	-	19	27	-	-	27	8	-	-	-	-
M - Crisis Support Unit	1	9	-	1	11	-	18	-	18	7	-	-	-	-
- Lifestyles Unit	2	6	-	-	8	-	8	-	8	0	-	-	-	-
- Remand Centre	310	22	-	-	332	216	2	8	226	-106	-	-	47	-
Lithgow	45	201	-	-	246	298	-	-	298	52	4	-	22	-
Sub-total	605	1046	2	2	1655	1476	173	15	1664	9	21	0	328	0
M Bathurst (Main)	43	154	-	-	197	220	4	-	224	27	-	-	4	-
M Broken Hill	6	34	-	1	41	14	14	-	28	-13	-	-	-	-
E Cooma	12	136	-	-	148	112	-	8	120	-28	-	-	-	-
D Grafton (Main)	34	79	-	2	115	42	-	12	54	-61	-	-	5	-
I Mulawa	-	-	65	151	216	162	52	8	222	6	-	2	-	13
U Parramatta	135	202	-	-	337	292	-	-	292	-45	-	-	-	-
M Parklea N.W.R.	69	195	-	-	282	405	-	-	405	123	-	-	-	-
- Work Release	-	18	-	-	-	-	-	-	-	-	-	-	-	-
Junee (Medium)	32	251	-	-	283	368	16	-	384	101	-	-	77	-
Tamworth	16	43	-	-	59	-	66	-	66	7	-	-	-	-
Sub-total	347	1112	65	154	1678	1615	152	28	1795	117	0	2	86	13
Berrima	2	61	-	-	63	57	4	-	61	-2	-	-	-	-
Emu Plains	3	107	-	-	110	116	2	-	118	8	-	-	-	-
Norma Parker N.W.R.	-	-	6	39	69	16	46	28	90	21	-	-	-	-
- Work Release	-	-	2	22	-	-	-	-	-	-	-	-	-	-
M Silverwater N.W.R.	11	227	-	-	358	45	408	-	453	95	-	-	-	-
I - Work Release	4	116	-	-	-	-	-	-	-	-	-	-	-	-
N Goulburn (X-Wing)	1	111	-	-	112	90	-	-	90	-22	-	-	-	-
I Bathurst (X-Wing)	1	115	-	-	116	89	-	-	89	-27	-	-	-	-
M Grafton (C-Unit)	4	115	-	-	119	96	-	-	96	-23	-	-	-	-
U Training Centre (Long Bay)	8	271	-	-	279	211	-	-	211	-68	-	-	-	-
M St Heliers	-	223	-	-	223	184	-	5	189	-34	-	-	-	-
Glen Innes	-	119	-	-	119	154	-	-	154	35	-	-	-	-
Mannus	7	139	-	-	146	81	48	12	141	-5	-	-	-	-
Oberon	4	91	-	-	95	80	-	-	80	-15	-	-	-	-
Kirkconnell	7	184	-	-	191	70	60	-	130	-61	-	-	-	-
Junee (Minimum)	19	240	-	-	259	228	-	-	228	-31	-	-	42	-
John Morony	18	169	-	-	187	232	18	-	250	63	-	-	-	-
Cessnock	31	385	-	-	416	407	50	-	457	41	-	-	-	-
Sub-total	120	2673	8	61	2862	2156	636	45	2837	-25	0	0	42	0
TOTAL FULL-TIME	1072	4831	75	217	6195	5247	961	88	6296	101	21	2	456	13

* Design accommodation in uncrowded conditions - amended 15th May, 1994.

N.W.R.=Non Work Release

**Difference between number of beds in uncrowded conditions and number of inmates.

S=Sentenced inmates (not including appellants) U/S=Unsentenced inmates (including appellants, trials, remandees and deportees)

Included in the above figures are:

Number of fine defaulters (in gaol for no other reason) 52 M + 5 F = 57 (including 0 at Junee)

Number of inmates on appeal 402 M + 40 F = 442 (including 51 at Junee)

Number of inmates on remand or for trial 669 M + 35 F = 704 (including 0 at Junee)

Number of juveniles under 18 years 0 M + 0 F = 0 (including 0 at Junee)

Total full-time inmates = 5653 (at DOCS institutions) + 542 (at Junee) = 6195

***** Research & Statistics *****

WEEKLY STATES FOR THE WEEK ENDING: 6TH NOVEMBER, 1994

PERIODIC DETAINEES (P.D.'S)	People with warrants			Attending			No.*	Beds*
	Stage1	Stage2	Total	Stage1	Stage2	Total	Beds	+/-
Campbelltown	80	23	103	49	23	72	52	3
Emu Plains	54	22	76	35	22	57	66	31
Grafton	42	41	83	27	39	66	50	23
Malabar	141	35	176	81	35	116	164	83
Malabar Mid-week	54	38	92	35	36	71	164	129
Parramatta	33	5	38	25	4	29	33	8
St Heliers	26	14	40	20	14	34	25	5
Silverwater	142	61	203	84	60	144	110	26
Silverwater Mid-week	107	47	154	65	45	110	110	45
Tomago	98	48	146	72	48	120	96	24
Windsor	61	26	87	40	23	63	60	20
Administration**	3	0	3	1	0	1	0	-1
Administration Midweek	3	0	3	0	0	0	0	0
Wollongong	59	25	84	45	23	68	82	37
Total Males	903	385	1288	579	372	951	1012	433

Merinda	69	21	90	44	19	63	52	8
Administration**	1	0	1	0	0	0	0	0
Total Females	70	21	91	44	19	63	52	8

TOTAL P.D.'S	973	406	1379	623	391	1014	1064	441
---------------------	------------	------------	-------------	------------	------------	-------------	-------------	------------

* Number of free beds calculated on the numbers attending in Stage 1 and assuming uncrowded conditions.
Amended 28th June, 1992.

** Administration Stage 1 comprises detainees who have failed to attend for more than 8 consecutive weeks.

** Administration Stage 2 comprises Stage 2 detainees not attached to any particular PDC.

Number of fine defaulters received into Periodic Detention Centres = 2.

The total number of people with warrants comprises:

Number attending		951	63	1014
Number in full-time custody	sentenced-one month or less	3 M+	0 F=	3
	sentenced-more than one month	12 M+	0 F=	12
	remand	14 M+	1 F=	15
Number on appeal with bail		5 M+	0 F=	5
Number absent - leave applied for	- sick	101 M+	10 F=	111
	- other	24 M+	2 F=	26
Total absent - reasons known		159 M+	13 F=	172
Number absent without leave	- no reason given	76 M+	6 F=	82
	- legal action pending	102 M+	9 F=	111
Total absent without leave		178 M+	15 F=	193
Total number of people with warrants		1288 M+	91 F=	1379

WEEKLY STATES FOR THE WEEK ENDING:

6TH NOVEMBER, 1994

	Full-time Inmates		All Inmates Full-time + PD	
	No.	Date	No.	Date
Highest weekly state, year ending previous week	6508	14/11/93	7796	5/6/94
Lowest weekly state, year ending previous week	6180	23/10/94	7525	30/1/94
State for previous week (amended figure)	6215	30/10/94	7574	30/10/94
State for this week	6195	6/11/94	7574	6/11/94

WEEKLY STATES AT MIDNIGHT ON: 4TH DECEMBER, 1994

FULL-TIME INMATES		INMATES				*Accommodation in				Beds +/- **	Segreg- ation		Protect- ion		
		Males		Females		Total	Single Cells	Multi Cells	Dorm		Total Beds	M	F	M	F
		U/S	S	U/S	S										
	Goulburn (Main)	51	272	-	-	323	314	55	-	369	46	2	-	156	-
	Maitland	54	141	-	-	195	51	76	-	127	-68	4	-	40	-
	Long Bay Complex														
	- Special Purpose Centre	20	34	1	2	57	60	-	-	60	3	-	-	-	-
M	- L. B. Hospital - Med.	4	19	-	-	23	16	12	-	28	5	-	-	-	-
A	- L. B. Hospital - Psych.	26	57	3	-	86	84	-	-	84	-2	-	-	-	-
X	- Prince Henry Annexe	-	6	-	-	6	-	-	7	7	1	-	-	-	-
I	- Reception & Industrial	80	320	-	-	400	410	2	-	412	12	9	-	28	-
M	- Special Care C. C.														
U	- Special Care Unit	1	20	-	-	21	27	-	-	27	6	-	-	-	-
M	- Crisis Support Unit	4	6	1	1	12	-	18	-	18	6	-	-	-	-
	- Lifestyles Unit	2	5	-	-	7	-	8	-	8	1	-	-	-	-
	- Remand Centre	330	21	-	-	351	216	2	8	226	-125	-	-	40	-
	Lithgow	50	208	-	-	258	298	-	-	298	40	5	-	24	-
	Sub-total	622	1109	5	3	1739	1476	173	15	1664	-75	20	0	288	0
	Bathurst (Main)	53	163	-	-	216	220	4	-	224	8	1	-	7	-
M	Broken Hill	4	35	-	1	40	14	14	-	28	-12	-	-	-	-
E	Cooma	9	106	-	-	115	112	-	8	120	5	-	-	-	-
D	Grafton (Main)	32	95	-	4	131	42	-	12	54	-77	-	-	3	-
I	Mulawa	-	-	56	146	202	162	52	8	222	20	-	3	-	10
U	Parramatta	137	210	-	-	347	292	-	-	292	-55	1	-	-	-
M	Parklea N.W.R.	66	184	-	-	261	405	-	-	405	144	-	-	-	-
	- Work Release	-	11	-	-	-	-	-	-	-	-	-	-	-	-
	Junee (Medium)	40	287	-	-	327	368	16	-	384	57	-	-	122	-
	Tamworth	15	36	-	-	51	-	66	-	66	15	-	-	-	-
	Sub-total	356	1127	56	151	1690	1615	152	28	1795	105	2	3	132	10
	Berrima	3	60	-	-	63	57	4	-	61	-2	-	-	-	-
	Emu Plains	3	82	-	-	85	116	2	-	118	33	-	-	-	-
	Norma Parker N.W.R.	-	-	8	45	73	16	46	28	90	17	-	-	-	-
	- Work Release	-	-	2	18	-	-	-	-	-	-	-	-	-	-
M	Silverwater N.W.R.	14	201	-	-	338	45	408	-	453	115	-	-	-	-
I	- Work Release	4	119	-	-	-	-	-	-	-	-	-	-	-	-
N	Goulburn (X-Wing)	-	112	-	-	112	90	-	-	90	-22	-	-	-	-
I	Bathurst (X-Wing)	4	113	-	-	117	89	-	-	89	-28	-	-	-	-
M	Grafton (C-Unit)	5	113	-	-	118	96	-	-	96	-22	-	-	-	-
U	Training Centre (Long Bay)	8	277	-	-	285	211	-	-	211	-74	-	-	-	-
M	St Heliers	-	237	-	-	237	184	-	5	189	-48	-	-	-	-
	Glen Innes	-	108	-	-	108	154	-	-	154	46	-	-	-	-
	Mannus	4	134	-	-	138	81	48	12	141	3	-	-	-	-
	Oberon	4	91	-	-	95	80	-	-	80	-15	-	-	-	-
	Kirkconnell	6	183	-	-	189	70	60	-	130	-59	-	-	-	-
	Junee (Minimum)	14	179	-	-	193	228	-	-	228	35	-	-	91	-
	John Morony	20	184	-	-	204	232	18	-	250	46	-	-	-	-
	Cessnock	31	371	-	-	402	407	50	-	457	55	-	-	-	-
	Sub-total	120	2564	10	63	2757	2156	636	45	2837	80	0	0	91	0
	TOTAL FULL-TIME	1098	4800	71	217	6186	5247	961	88	6296	110	22	3	511	10

* Design accommodation in uncrowded conditions - amended 15th May, 1994.

N.W.R.=Non Work Release

**Difference between number of beds in uncrowded conditions and number of inmates.

S=Sentenced inmates (not including appellants) U/S=Unsentenced inmates (including appellants, trials, remandees and deportees)

Included in the above figures are:

Number of fine defaulters (in gaol for no other reason)	45 M+	8 F=	53	(including	0 at Junee)
Number of inmates on appeal	408 M+	37 F=	445	(including	54 at Junee)
Number of inmates on remand or for trial	688 M+	34 F=	722	(including	0 at Junee)
Number of juveniles under 18 years	0 M+	0 F=	0	(including	0 at Junee)
Total full-time inmates =	5666 (at DOCS institutions)	+	520 (at Junee)	=	6186

***** Research & Statistics *****

WEEKLY STATES FOR THE WEEK ENDING: 4TH DECEMBER, 1994

PERIODIC DETAINEES (P.D.'S)	People with warrants			Attending			No.*	Beds*
	Stage1	Stage2	Total	Stage1	Stage2	Total	Beds	+/-
Campbelltown	84	22	106	45	22	67	52	7
Emu Plains	50	25	75	31	25	56	66	35
Grafton	39	41	80	26	41	67	50	24
Malabar	136	38	174	70	37	107	164	94
Malabar Mid-week	58	45	103	36	45	81	164	128
Parramatta	29	3	32	16	2	18	33	17
St Heliers	27	14	41	20	14	34	25	5
Silverwater	138	59	197	73	58	131	110	37
Silverwater Mid-week	113	36	149	66	36	102	110	44
Tomago	102	50	152	70	49	119	96	26
Windsor	68	28	96	47	26	73	60	13
Administration**	3	0	3	1	0	1	0	-1
Administration Midweek	2	0	2	0	0	0	0	0
Wollongong	57	23	80	38	20	58	82	44
Total Males	906	384	1290	539	375	914	1012	473

Merinda	72	23	95	35	23	58	52	17
Administration**	1	0	1	0	0	0	0	0
Total Females	73	23	96	35	23	58	52	17

TOTAL P.D.'S	979	407	1386	574	398	972	1064	490
---------------------	------------	------------	-------------	------------	------------	------------	-------------	------------

* Number of free beds calculated on the numbers attending in Stage 1 and assuming uncrowded conditions.
Amended 28th June, 1992.

** Administration Stage 1 comprises detainees who have failed to attend for more than 8 consecutive weeks.

** Administration Stage 2 comprises Stage 2 detainees not attached to any particular PDC.

Number of fine defaulters received into Periodic Detention Centres = 1.

The total number of people with warrants comprises:

Number attending		914	58	972
Number in full-time custody	sentenced-one month or less	4 M +	0 F =	4
	sentenced-more than one month	13 M +	0 F =	13
	remand	9 M +	1 F =	10
Number on appeal with bail		6 M +	0 F =	6
Number absent - leave applied for	- sick	122 M +	15 F =	137
	- other	26 M +	0 F =	26
Total absent - reasons known		180 M +	16 F =	196
Number absent without leave	- no reason given	77 M +	13 F =	90
	- legal action pending	119 M +	9 F =	128
Total absent without leave		196 M +	22 F =	218
Total number of people with warrants		1290 M +	96 F =	1386

WEEKLY STATES FOR THE WEEK ENDING: 4TH DECEMBER, 1994

	Full-time Inmates		All Inmates Full-time + PD	
	No.	Date	No.	Date
Highest weekly state, year ending previous week	6488	3/4/94	7796	5/6/94
Lowest weekly state, year ending previous week	6180	23/10/94	7525	30/1/94
State for previous week	6185	27/11/94	7575	27/11/94
State for this week	6186	4/12/94	7572	4/12/94

WEEKLY STATES AT MIDNIGHT ON: 1ST JANUARY, 1995

FULL-TIME INMATES	INMATES					*Accommodation in				Beds +/- **	Segregation		Protection	
	Males		Females		Total	Single Cells	Multi Cells	Dorm	Total Beds		M	F	M	F
	U/S	S	U/S	S										
M Goulburn (Main)	62	296	-	-	358	314	55	-	369	11	7	-	189	-
M Maitland	61	121	-	-	182	51	76	-	127	-55	5	-	40	-
M Long Bay Complex														
M - Special Purpose Centre	15	36	-	3	54	60	-	-	60	6	-	-	-	-
M - L. B. Hospital - Med.	10	17	-	-	27	16	12	-	28	1	-	-	-	-
M - L. B. Hospital - Psych.	27	54	1	-	82	84	-	-	84	2	-	-	-	-
M - Prince Henry Annexe	2	3	-	-	5	-	-	7	7	2	-	-	-	-
M - Reception & Industrial	64	225	-	-	289	410	2	-	412	123	10	-	23	-
M - Special Care C.C.														
M - Special Care Unit	1	21	-	-	22	27	-	-	27	5	-	-	-	-
M - Crisis Support Unit	3	4	1	1	9	-	18	-	18	9	-	-	-	-
M - Lifestyles Unit	2	3	-	-	5	-	8	-	8	3	-	-	-	-
M - Remand Centre	318	17	-	-	335	216	2	8	226	-109	-	-	51	-
M Lithgow	45	234	-	-	279	298	-	-	298	19	4	-	25	-
Sub-total	610	1031	2	4	1647	1476	173	15	1664	17	26	0	328	0
M Bathurst (Main)	55	160	-	-	215	220	4	-	224	9	-	-	4	-
M Broken Hill	5	37	-	2	44	14	14	-	28	-16	-	-	-	-
M Cooma	10	115	-	-	125	112	-	8	120	-5	-	-	-	-
M Grafton (Main)	38	97	-	7	142	42	-	12	54	-88	1	-	2	-
M Mulawa	-	-	57	147	204	162	52	8	222	18	-	1	-	9
M Parramatta	141	194	-	-	335	292	-	-	292	-43	-	-	-	-
M Parklea N.W.R.	73	182	-	-	275	405	-	-	405	130	1	-	-	-
M - Work Release	-	20	-	-	-	-	-	-	-	-	-	-	-	-
M Junee (Medium)	45	325	-	-	370	368	16	-	384	14	-	-	133	-
M Tamworth	24	37	-	-	61	-	66	-	66	5	-	-	-	-
Sub-total	391	1167	57	156	1771	1615	152	28	1795	24	2	1	139	9
M Berrima	2	60	-	-	62	57	4	-	61	-1	-	-	-	-
M Emu Plains	3	61	-	-	64	116	2	-	118	54	-	-	-	-
M Norma Parker N.W.R.	-	-	1	50	69	16	46	28	90	21	-	-	-	-
M - Work Release	-	-	2	16	-	-	-	-	-	-	-	-	-	-
M Silverwater N.W.R.	14	208	-	-	341	45	408	-	453	112	-	-	-	-
M - Work Release	3	116	-	-	-	-	-	-	-	-	-	-	-	-
M Goulburn (X-Wing)	2	111	-	-	113	90	-	-	90	-23	-	-	-	-
M Bathurst (X-Wing)	2	111	-	-	113	89	-	-	89	-24	-	-	-	-
M Grafton (C-Unit)	9	105	-	-	114	96	-	-	96	-18	-	-	-	-
M Training Centre (Long Bay)	8	276	-	-	284	211	-	-	211	-73	-	-	-	-
M St Heliers	-	238	-	-	238	184	-	5	189	-49	1	-	-	-
M Glen Innes	-	125	-	-	125	154	-	-	154	29	-	-	-	-
M Mannus	5	119	-	-	124	81	48	12	141	17	-	-	-	-
M Oberon	5	87	-	-	92	80	-	-	80	-12	-	-	-	-
M Kirkconnell	5	178	-	-	183	70	60	-	130	-53	-	-	-	-
M Junee (Minimum)	21	179	-	-	200	228	-	-	228	28	-	-	91	-
M John Morony	18	182	-	-	200	232	18	-	250	50	-	-	-	-
M Cessnock	31	367	-	-	398	407	50	-	457	59	-	-	1	-
Sub-total	128	2523	3	66	2720	2156	636	45	2837	117	1	0	92	0
TOTAL FULL-TIME	1129	4721	62	226	6138	5247	961	88	6296	158	29	1	559	9

* Design accommodation in uncrowded conditions - amended 15th May, 1994.

N.W.R.=Non Work Release

**Difference between number of beds in uncrowded conditions and number of inmates.

S=Sentenced inmates (not including appellants) U/S=Unsentenced inmates (including appellants, trials, remandees and deportees)

Included in the above figures are:

Number of fine defaulters (in gaol for no other reason)	46 M +	7 F =	53	(including 0 at Junee)
Number of inmates on appeal	422 M +	27 F =	449	(including 66 at Junee)
Number of inmates on remand or for trial	706 M +	35 F =	741	(including 0 at Junee)
Number of juveniles under 18 years	0 M +	0 F =	0	(including 0 at Junee)
Total full-time inmates =	5568 (at DOCS institutions)	+	570 (at Junee)	= 6138

***** Research & Statistics *****

WEEKLY STATES FOR THE WEEK ENDING: 1ST JANUARY, 1995

PERIODIC

DETAINEES (P.D.'S)

	People with warrants			Attending			No.*	Beds*
	Stage1	Stage2	Total	Stage1	Stage2	Total	Beds	+/-
Campbelltown	82	20	102	41	19	60	52	11
Emu Plains	38	20	58	17	19	36	66	49
Grafton	37	36	73	25	35	60	50	25
Malabar	144	35	179	76	35	111	164	88
Malabar Mid-week	62	40	102	44	37	81	164	120
Parramatta	25	5	30	12	4	16	33	21
St Heliers	23	18	41	12	18	30	25	13
Silverwater	139	59	198	57	53	110	110	53
Silverwater Mid-week	117	34	151	71	34	105	110	39
Tomago	103	47	150	54	45	99	96	42
Windsor	74	29	103	22	27	49	60	38
Administration**	4	0	4	0	0	0	0	0
Administration Midweek	2	0	2	0	0	0	0	0
Wollongong	65	21	86	39	19	58	82	43
Total Males	915	364	1279	470	345	815	1012	542

Merinda	65	34	99	27	33	60	52	25
Administration**	1	0	1	0	0	0	0	0
Total Females	66	34	100	27	33	60	52	25

TOTAL P.D.'S	981	398	1379	497	378	875	1064	567
---------------------	------------	------------	-------------	------------	------------	------------	-------------	------------

* Number of free beds calculated on the numbers attending in Stage 1 and assuming uncrowded conditions. Amended 28th June, 1992.

** Administration Stage 1 comprises detainees who have failed to attend for more than 8 consecutive weeks.

Number of fine defaulters received into Periodic Detention Centres = 1.

The total number of people with warrants comprises:

Number attending		815	60	875
Number in full-time custody	sentenced-one month or less	5 M +	0 F =	5
	sentenced-more than one month	10 M +	1 F =	11
	remand	11 M +	0 F =	11
Number on appeal with bail		2 M +	0 F =	2
Number absent - leave applied for	- sick	123 M +	20 F =	143
	- other	25 M +	0 F =	25
Total absent - reasons known		176 M +	21 F =	197
Number absent without leave	- no reason given	160 M +	5 F =	165
	- legal action pending	128 M +	14 F =	142
Total absent without leave		288 M +	19 F =	307
Total number of people with warrants		1279 M +	100 F =	1379

WEEKLY STATES FOR THE WEEK ENDING:

1ST JANUARY, 1995

	Full-time Inmates		All Inmates Full-time + PD	
	No.	Date	No.	Date
Highest weekly state, year ending previous week	6488	3/4/94	7796	5/6/94
Lowest weekly state, year ending previous week	6125	25/12/94	7525	30/1/94
State for previous week	6125	25/12/94	-#	25/12/94
State for this week	6138	1/1/95	7517	1/1/95

All PDCs were closed over Christmas.

***** Research & Statistics *****

WEEKLY STATES AT MIDNIGHT ON: 5TH FEBRUARY, 1995

FULL-TIME INMATES	INMATES					*Accommodation in				Beds +/- **	Segregation		Protection	
	Males		Females		Total	Single Cells	Multi Cells	Dorm	Total Beds		M	F	M	F
	U/S	S	U/S	S										
Goulburn (Main)	71	255	-	-	326	314	55	-	369	43	7	-	189	-
Maitland	63	122	-	-	185	51	76	-	127	-58	4	-	41	-
Long Bay Complex														
- Special Purpose Centre	16	35	-	3	54	60	-	-	60	6	-	-	-	-
M - L. B. Hospital - Med.	9	20	-	-	29	16	12	-	28	-1	-	-	-	-
A - L. B. Hospital - Psych.	36	53	-	-	89	84	-	-	84	-5	-	-	-	-
X - Prince Henry Annexe	-	5	-	-	5	-	-	7	7	2	-	-	-	-
I - Reception & Industrial	76	293	-	-	369	410	2	-	412	43	14	-	60	-
M - Special Care C. C.														
U - Special Care Unit	1	20	-	-	21	27	-	-	27	6	-	-	-	-
M - Crisis Support Unit	3	8	-	2	13	-	18	-	18	5	-	-	-	-
- Lifestyles Unit	2	3	-	-	5	-	8	-	8	3	-	-	-	-
- Remand Centre	314	16	-	-	330	216	2	8	226	-104	-	-	53	-
Lithgow	54	231	-	-	285	298	-	-	298	13	9	-	25	-
Sub-total	645	1061	0	5	1711	1476	173	15	1664	-47	34	0	368	0
M Bathurst (Main)	45	183	-	-	228	220	4	-	224	-4	2	-	3	-
Broken Hill	9	32	-	1	42	14	14	-	28	-14	-	-	-	-
E Cooma	9	116	-	-	125	112	-	8	120	-5	-	-	-	-
D Grafton (Main)	24	91	1	5	121	42	-	12	54	-67	4	-	5	-
I Mulawa	-	-	64	134	198	162	52	8	222	24	-	1	-	8
U Parramatta	169	163	-	-	332	292	-	-	292	-40	-	-	-	-
M Parklea N.W.R.	78	171	-	-	273	405	-	-	405	132	-	-	-	-
- Work Release	-	24	-	-	-	-	-	-	-	-	-	-	-	-
Junee (Medium)	52	294	-	-	346	368	16	-	384	38	2	-	133	-
Tamworth	18	42	-	-	60	-	66	-	66	6	-	-	-	-
Sub-total	404	1116	65	140	1725	1615	152	28	1795	70	8	1	141	8
M Berrima	2	60	-	-	62	57	4	-	61	-1	-	-	-	-
Emu Plains	1	46	-	-	47	116	2	-	118	71	-	-	-	-
Norma Parker N.W.R.	-	-	4	48	68	16	46	28	90	22	-	-	-	-
- Work Release	-	-	2	14	-	-	-	-	-	-	-	-	-	-
M Silverwater N.W.R.	16	247	-	-	386	45	408	-	453	67	-	-	-	-
I - Work Release	2	121	-	-	-	-	-	-	-	-	-	-	-	-
N Goulburn (X-Wing)	2	94	-	-	96	90	-	-	90	-6	-	-	-	-
I Bathurst (X-Wing)	3	83	-	-	86	89	-	-	89	3	-	-	-	-
M Grafton (C-Unit)	9	111	-	-	120	96	-	-	96	-24	-	-	-	-
U Training Centre (Long Bay)	7	285	-	-	292	211	-	-	211	-81	-	-	-	-
M St Heliers	-	232	-	-	232	184	-	5	189	-43	-	-	-	-
Glen Innes	-	123	-	-	123	154	-	-	154	31	-	-	-	-
Mannus	7	112	-	-	119	81	48	12	141	22	-	-	-	-
Oberon	4	75	-	-	79	80	-	-	80	1	-	-	-	-
Kirkconnell	5	187	-	-	192	70	60	-	130	-62	-	-	-	-
Junee (Minimum)	19	196	-	-	215	228	-	-	228	13	-	-	101	-
John Morony	20	176	-	-	196	232	18	-	250	54	-	-	-	-
Cessnock	26	380	-	-	406	407	50	-	457	51	-	-	1	-
Sub-total	123	2528	6	62	2719	2156	636	45	2837	118	0	0	102	0
TOTAL FULL-TIME	1172	4705	71	207	6155	5247	961	88	6296	141	42	1	611	8

* Design accommodation in uncrowded conditions - amended 15th May, 1994.

N.W.R.=Non Work Release

**Difference between number of beds in uncrowded conditions and number of inmates.

S=Sentenced inmates (not including appellants) U/S=Unsentenced inmates (including appellants, trials, remandees and deportees)

Included in the above figures are:

Number of fine defaulters (in gaol for no other reason) 70 M + 14 F = 84 (including 0 at Junee)

Number of inmates on appeal 426 M + 38 F = 464 (including 71 at Junee)

Number of inmates on remand or for trial 744 M + 33 F = 777 (including 0 at Junee)

Number of juveniles under 18 years 0 M + 0 F = 0 (including 0 at Junee)

Total full-time inmates = 5594 (at DOCS institutions) + 561 (at Junee) = 6155

***** Research & Statistics *****

WEEKLY STATES FOR THE WEEK ENDING: 5TH FEBRUARY, 1995

PERIODIC

DETAINEES (P.D.'S)

	People with warrants			Attending			No.*	Beds*
	Stage1	Stage2	Total	Stage1	Stage2	Total	Beds	+/-
Campbelltown	66	22	88	40	20	60	52	12
Emu Plains	13	3	16	8	3	11	66	58
Grafton	36	36	72	22	33	55	50	28
Malabar	131	39	170	74	38	112	164	90
Malabar Mid-week	52	37	89	34	36	70	164	130
Parramatta	36	6	42	27	5	32	33	6
St Heliers	19	16	35	10	15	25	25	15
Silverwater	127	67	194	74	60	134	110	36
Silverwater Mid-week	114	38	152	65	34	99	110	45
Tomago	96	50	146	57	48	105	96	39
Windsor	90	40	130	55	36	91	60	5
Administration**	5	0	5	0	0	0	0	0
Administration Midweek	1	1	2	0	1	1	0	0
Wollongong	59	25	84	34	24	58	82	48
Mannus	3	2	5	2	2	4	24	22
Total Males	848	382	1230	502	355	857	1036	534

Merinda	70	31	101	36	29	65	52	16
Administration**	1	0	1	0	0	0	6	6
Mannus	0	0	0	0	0	0	0	0
Total Females	71	31	102	36	29	65	58	22

TOTAL P.D.'S	919	413	1332	538	384	922	1094	556
---------------------	------------	------------	-------------	------------	------------	------------	-------------	------------

* Number of free beds calculated on the numbers attending in Stage 1 and assuming uncrowded conditions.
Amended 22nd Jan, 1995.

** Administration Stage 1 comprises detainees who have failed to attend for more than 8 consecutive weeks.

Number of fine defaulters attending periodic detention = 1.

The total number of people with warrants comprises:

Number attending		857	65	922
Number in full-time custody				
	sentenced-one month or less	0 M +	0 F =	0
	sentenced-more than one month	15 M +	0 F =	15
	remand	13 M +	4 F =	17
Number on appeal with bail		2 M +	0 F =	2
Number absent - leave applied for	- sick	87 M +	15 F =	102
	- other	26 M +	1 F =	27
Total absent - reasons known		143 M +	20 F =	163
Number absent without leave	- no reason given	85 M +	5 F =	90
	- legal action pending	145 M +	12 F =	157
Total absent without leave		230 M +	17 F =	247
Total number of people with warrants		1230 M +	102 F =	1332

WEEKLY STATES FOR THE WEEK ENDING:

5TH FEBRUARY, 1995

	Full-time Inmates		All Inmates Full-time + PD	
	No.	Date	No.	Date
Highest weekly state, year ending previous week	6488	3/4/94	7796	5/6/94
Lowest weekly state, year ending previous week	6125	25/12/94	7464	29/1/95
State for previous week (amended figure)	6110	29/1/95	7464	29/1/95
State for this week	6155	5/2/95	7487	5/2/95

WEEKLY STATES AT MIDNIGHT ON: 5TH MARCH, 1995

FULL-TIME INMATES	INMATES					*Accommodation in				Beds +/- **	Segregation		Protection	
	Males		Females		Total	Single Cells	Multi Cells	Dorm	Total Beds		M	F	M	F
	U/S	S	U/S	S										
Goulburn (Main)	86	267	-	-	353	314	55	-	369	16	8	-	204	-
Maitland	65	114	-	-	179	51	76	-	127	-52	3	-	39	-
Long Bay Complex														
- Special Purpose Centre	15	42	-	3	60	60	-	-	60	0	-	-	-	-
M - L. B. Hospital - Med.	12	13	-	-	25	16	12	-	28	3	-	-	-	-
A - L. B. Hospital - Psych.	27	59	-	-	86	84	-	-	84	-2	-	-	-	-
X - Prince Henry Annexe	3	3	-	-	6	-	-	7	7	1	-	-	-	-
I - Reception & Industrial	84	343	-	-	427	410	2	-	412	-15	12	-	60	-
M - Special Care C. C.														
U - Special Care Unit	-	23	-	-	23	27	-	-	27	4	-	-	-	-
M - Crisis Support Unit	4	7	-	2	13	-	18	-	18	5	-	-	-	-
- Lifestyles Unit	2	3	-	-	5	-	8	-	8	3	-	-	-	-
- Remand Centre	309	13	-	-	322	216	2	8	226	-96	1	-	48	-
Lithgow	45	227	-	-	272	298	-	-	298	26	3	-	19	-
Sub-total	652	1114	0	5	1771	1476	173	15	1664	-107	27	0	370	0
Bathurst (Main)	43	186	-	-	229	220	4	-	224	-5	1	-	3	-
M Broken Hill	7	35	-	1	43	14	14	-	28	-15	-	-	-	-
E Cooma	9	121	-	-	130	112	-	8	120	-10	-	-	-	-
D Grafton (Main)	32	100	-	5	137	42	-	12	54	-83	2	-	1	-
I Mulawa	-	-	55	123	178	162	52	8	222	44	-	1	-	8
U Parramatta	182	159	-	-	341	292	-	-	292	-49	-	-	-	-
M Parklea N.W.R.	80	183	-	-	277	405	-	-	405	128	-	-	-	-
- Work Release	-	14	-	-										
Junee (Medium)	36	245	-	-	281	368	16	-	384	103	1	-	112	-
Tamworth	19	39	-	-	58	-	66	-	66	8	-	-	-	-
Sub-total	408	1082	55	129	1674	1615	152	28	1795	121	4	1	116	8
Berrima	2	60	-	-	62	57	4	-	61	-1	-	-	-	-
Emu Plains	-	-	2	24	26	116	2	-	118	92	-	-	-	-
Norma Parker N.W.R.	-	-	5	37	60	16	46	28	90	30	-	-	-	-
- Work Release	-	-	2	16										
M Silverwater N.W.R.	14	225	-	-	374	45	408	-	453	79	-	-	-	-
I - Work Release	4	131	-	-										
N Goulburn (X-Wing)	4	96	-	-	100	90	-	-	90	-10	-	-	-	-
I Bathurst (X-Wing)	4	84	-	-	88	89	-	-	89	1	-	-	-	-
M Grafton (C-Unit)	8	109	-	-	117	96	-	-	96	-21	-	-	-	-
U Training Centre (Long Bay)	7	272	-	-	279	211	-	-	211	-68	-	-	-	-
M St Heliers	-	240	-	-	240	184	-	5	189	-51	1	-	-	-
Glen Innes	-	123	-	-	123	154	-	-	154	31	-	-	-	-
Mannus	1	121	-	-	122	81	48	12	141	19	-	-	-	-
Oberon	6	86	-	-	92	80	-	-	80	-12	-	-	-	-
Kirkconnell	5	191	-	-	196	70	60	-	130	-66	-	-	-	-
Junee (Minimum)	25	244	-	-	269	228	-	-	228	-41	-	-	113	-
John Morony	12	183	-	-	195	232	18	-	250	55	-	-	-	-
Cessnock	23	393	-	-	416	407	50	-	457	41	2	-	3	-
Sub-total	115	2558	9	77	2759	2156	636	45	2837	78	3	0	116	0
TOTAL FULL-TIME	1175	4754	64	211	6204	5247	961	88	6296	92	34	1	602	8

* Design accommodation in uncrowded conditions - amended 15th May, 1994.

N.W.R.=Non Work Release

**Difference between number of beds in uncrowded conditions and number of inmates.

S=Sentenced inmates (not including appellants) U/S=Unsentenced inmates (including appellants, trials, remandees and deportees)

Included in the above figures are:

Number of fine defaulters (in gaol for no other reason)	54 M +	8 F =	62 (including 0 at Junee)
Number of inmates on appeal	420 M +	31 F =	451 (including 61 at Junee)
Number of inmates on remand or for trial	751 M +	33 F =	784 (including 0 at Junee)
Number of juveniles under 18 years	0 M +	0 F =	0 (including 0 at Junee)
Total full-time inmates =	5654 (at DOCS institutions) +	550 (at Junee) =	6204

***** Research & Statistics *****

WEEKLY STATES FOR THE WEEK ENDING: 5TH MARCH, 1995

PERIODIC DETAINEES (P.D.'S)	People with warrants			Attending			No.*	Beds*
	Stage1	Stage2	Total	Stage1	Stage2	Total	Beds	+/-
Campbelltown	77	24	101	35	23	58	52	17
Emu Plains#	0	0	0	0	0	0	66	66
Grafton	35	36	71	22	36	58	50	28
Malabar	135	41	176	76	39	115	164	88
Malabar Mid-week	54	36	90	34	36	70	164	130
Parramatta	27	8	35	16	8	24	33	17
St Heliers	19	13	32	10	13	23	25	15
Silverwater	131	45	176	69	41	110	110	41
Silverwater Mid-week	116	37	153	63	36	99	110	47
Tomago	93	57	150	55	57	112	96	41
Windsor	100	40	140	59	35	94	60	1
Administration**	5	0	5	0	0	0	0	0
Administration Midweek	1	1	2	0	1	1	0	0
Wollongong	69	30	99	41	29	70	82	41
Mannus	12	2	14	9	2	11	24	15
Total Males	874	370	1244	489	356	845	1036	547

Merinda	71	32	103	37	28	65	52	15
Administration**	1	0	1	0	0	0	6	6
Mannus	0	0	0	0	0	0	0	0
Total Females	72	32	104	37	28	65	58	21

TOTAL P.D.'S	946	402	1348	526	384	910	1094	568
---------------------	------------	------------	-------------	------------	------------	------------	-------------	------------

* Number of free beds calculated on the numbers attending in Stage 1 and assuming uncrowded conditions.

Amended 22nd Jan, 1995. # Emu Plains PDC is temporarily closed due to change to females.

** Administration Stage 1 comprises detainees who have failed to attend for more than 8 consecutive weeks.

Number of fine defaulters attending periodic detention = 1.

The total number of people with warrants comprises:

Number attending			845	65	910
Number in full-time custody					
	sentenced-one month or less		1 M +	0 F =	1
	sentenced-more than one month		12 M +	0 F =	12
	remand		22 M +	1 F =	23
Number on appeal with bail			2 M +	0 F =	2
Number absent - leave applied for					
	- sick		104 M +	17 F =	121
	- other		25 M +	3 F =	28
Total absent - reasons known			166 M +	21 F =	187
Number absent without leave					
	- no reason given		108 M +	8 F =	116
	- legal action pending		125 M +	10 F =	135
Total absent without leave			233 M +	18 F =	251
Total number of people with warrants			1244 M +	104 F =	1348

WEEKLY STATES FOR THE WEEK ENDING: 5TH MARCH, 1995

	Full-time Inmates		All Inmates Full-time + PD	
	No.	Date	No.	Date
Highest weekly state, year ending previous week	6448	3/4/94	7796	5/6/94
Lowest weekly state, year ending previous week	6110	29/1/95	7464	29/1/95
State for previous week	6217	26/2/95	7581	26/2/95
State for this week	6204	5/3/95	7552	5/3/95

WEEKLY STATES AT MIDNIGHT ON: 2ND APRIL, 1995

FULL-TIME INMATES	INMATES					*Accommodation in				Beds +/- **	Segregation		Protection	
	Males		Females		Total	Single Cells	Multi Cells	Dorm	Total Beds		M	F	M	F
	U/S	S	U/S	S										
M Goulburn (Main)	70	299	-	-	369	314	55	-	369	0	16	-	39	-
M Maitland	60	143	-	-	203	51	76	-	127	-76	6	-	61	-
M Long Bay Complex														
M - Special Purpose Centre	11	44	-	3	58	60	-	-	60	2	-	-	-	-
M - L. B. Hospital - Med.	6	21	-	-	27	16	12	-	28	1	-	-	-	-
M - L. B. Hospital - Psych.	30	58	-	-	88	84	-	-	84	-4	-	-	-	-
X - Prince Henry Annexe	-	1	-	-	1	-	-	7	7	6	-	-	-	-
I - Reception & Induction	57	185	-	-	242	410	2	-	412	170	-	-	89	-
M - Special Care C. C.														
U - Special Care Unit	1	19	-	-	20	27	-	-	27	7	-	-	-	-
M - Crisis Support Unit	4	7	-	1	12	-	18	-	18	6	-	-	-	-
M - Lifestyles Unit	2	5	-	-	7	-	8	-	8	1	-	-	-	-
M - Remand Centre	344	18	-	-	362	216	2	8	226	-136	10	-	54	-
M Lithgow	47	230	-	-	277	298	-	-	298	21	2	-	38	-
Sub-total	632	1030	0	4	1666	1476	173	15	1664	-2	34	0	281	0
M Bathurst (Main)	42	186	-	-	228	220	4	-	224	-4	1	-	5	-
M Broken Hill	7	33	-	1	41	14	14	-	28	-13	-	-	-	-
E Cooma	13	138	-	-	151	112	-	8	120	-31	-	-	-	-
D Grafton (Main)	45	88	-	5	138	42	-	12	54	-84	2	-	1	-
I Mulawa	-	-	49	124	173	162	52	8	222	49	1	-	12	-
U Parramatta	163	183	-	-	346	292	-	-	292	-54	-	-	-	-
M Parklea N.W.R.	78	201	-	-	299	405	-	-	405	106	-	-	-	-
- Work Release	-	20	-	-										
Junee (Medium)	32	244	-	-	276	368	16	-	384	108	3	-	180	-
Tamworth	23	36	-	-	59	-	66	-	66	7	-	-	3	-
Sub-total	403	1129	49	130	1711	1615	152	28	1795	84	6	1	189	12
M Berrima	2	59	-	-	61	57	4	-	61	0	-	-	-	-
M Emu Plains	-	-	6	50	56	116	2	-	118	62	-	-	-	-
M Norma Parker N.W.R.	-	-	5	35	59	16	46	28	90	31	-	-	-	-
- Work Release	-	-	2	17										
M Silverwater N.W.R.	15	244	-	-	395	45	408	-	453	58	-	-	-	-
I - Work Release	4	132	-	-										
N Goulburn (X-Wing)	8	103	-	-	111	90	-	-	90	-21	-	-	-	-
I Bathurst (X-Wing)	7	100	-	-	107	89	-	-	89	-18	-	-	-	-
M Grafton (C-Unit)	9	110	-	-	119	96	-	-	96	-23	-	-	-	-
U Industrial Training Centre	22	368	-	-	390	236	37	-	273	-117	-	-	-	-
M St Heliers	-	239	-	-	239	184	-	5	189	-50	-	-	-	-
M Glen Innes	-	122	-	-	122	154	-	-	154	32	-	-	-	-
M Mannus	1	129	-	-	130	81	48	12	141	11	-	-	-	-
M Oberon	9	83	-	-	92	80	-	-	80	-12	-	-	-	-
M Kirkconnell	4	194	-	-	198	70	60	-	130	-68	-	-	-	-
M Junee (Minimum)	31	259	-	-	290	228	-	-	228	-62	1	-	171	-
M John Morony	12	183	-	-	195	232	18	-	250	55	1	-	-	-
M Cessnock	29	378	-	-	407	407	50	-	457	50	2	-	2	-
Sub-total	153	2703	13	102	2971	2181	673	45	2899	-72	4	0	173	0
TOTAL FULL-TIME	1188	4862	62	236	6348	5272	998	88	6358	10	44	1	643	12

* Design accommodation in uncrowded conditions - amended 24th March, 1995. N.W.R.=Non Work Release

**Difference between number of beds in uncrowded conditions and number of inmates.

S=Sentenced inmates (not including appellants) U/S=Unsentenced inmates (including appellants, trials, remandees and deportees)

Included in the above figures are:

Number of fine defaulters (in gaol for no other reason)	63 M +	12 F =	75	(including 0 at Junee)
Number of inmates on appeal	437 M +	28 F =	465	(including 63 at Junee)
Number of inmates on remand or for trial	749 M +	34 F =	783	(including 0 at Junee)
Number of juveniles under 18 years	0 M +	0 F =	0	(including 0 at Junee)
Total full-time inmates =	5782 (at DOCS institutions)	+	566 (at Junee)	= 6348

***** Research & Statistics *****

WEEKLY STATES FOR THE WEEK ENDING: 2ND APRIL, 1995

PERIODIC DETAINEES (P.D.'S)	People with warrants			Attending			No.*	Beds*
	Stage1	Stage2	Total	Stage1	Stage2	Total	Beds	+/-
Campbelltown	83	24	107	45	24	69	52	7
Grafton	31	35	66	16	33	49	50	34
Malabar	123	47	170	74	43	117	164	90
Malabar Mid-week	56	34	90	41	32	73	164	123
Parramatta	31	11	42	18	11	29	33	15
St Heliers	20	12	32	11	12	23	25	14
Silverwater	144	49	193	86	46	132	110	24
Silverwater Mid-week	110	43	153	56	42	98	110	54
Tomago	102	53	155	67	51	118	96	29
Windsor	101	38	139	62	38	100	60	-2
Administration**	3	0	3	0	0	0	0	0
Administration Midweek	1	1	2	0	1	1	0	0
Wollongong	75	29	104	40	28	68	82	42
Mannus	18	2	20	12	2	14	24	12
Total Males	898	378	1276	528	363	891	970	442

Emu Plains	71	33	104	34	32	66	40	6
Administration**	1	0	1	0	0	0	0	0
Mannus	1	0	1	1	0	1	6	5
Total Females	73	33	106	35	32	67	46	11

TOTAL P.D.'S	971	411	1382	563	395	958	1016	453
---------------------	------------	------------	-------------	------------	------------	------------	-------------	------------

* Number of free beds calculated on the numbers attending in Stage 1 and assuming uncrowded conditions.

Amended 26th March, 1995.

** Administration Stage 1 comprises detainees who have failed to attend for more than 8 consecutive weeks.

Number of fine defaulters attending periodic detention = 1.

The total number of people with warrants comprises:

Number attending			891	67	958
Number in full-time custody	sentenced-one month or less		0 M +	3 F =	3
	sentenced-more than one month		6 M +	0 F =	6
	remand		27 M +	0 F =	27
Number on appeal with bail			3 M +	0 F =	3
Number absent - leave applied for	- sick		83 M +	13 F =	96
	- other		26 M +	4 F =	30
Total absent - reasons known			145 M +	20 F =	165
Number absent without leave	- no reason given		93 M +	11 F =	104
	- legal action pending		147 M +	8 F =	155
Total absent without leave			240 M +	19 F =	259
Total number of people with warrants			1276 M +	106 F =	1382

WEEKLY STATES FOR THE WEEK ENDING: 2ND APRIL, 1995

	Full-time Inmates		All Inmates Full-time + PD	
	No.	Date	No.	Date
Highest weekly state, year ending previous week	6448	3/4/94	7796	5/6/94
Lowest weekly state, year ending previous week	6110	29/1/95	7464	29/1/95
State for previous week (amended figure)	6275	26/3/95	7655	26/3/95
State for this week	6348	2/4/95	7730	2/4/95

WEEKLY STATES AT MIDNIGHT ON: 7TH MAY, 1995

FULL-TIME INMATES	INMATES					*Accommodation in				Beds +/- **	Segregation		Protection	
	Males		Females		Total	Single Cells	Multi Cells	Dorm	Total Beds		M	F	M	F
	U/S	S	U/S	S										
Goulburn (Main)	50	312	-	-	362	314	55	-	369	7	11	-	39	-
Maitland	64	150	-	-	214	51	76	-	127	-87	3	-	65	-
Long Bay Complex														
- Special Purpose Centre	9	46	-	3	58	60	-	-	60	2	-	-	-	-
M - L. B. Hospital - Med.	6	16	-	-	22	16	12	-	28	6	-	-	-	-
A - L. B. Hospital - Psych.	28	58	-	-	86	84	-	-	84	-2	-	-	-	-
X - Prince Henry Annexe	-	2	-	-	2	-	-	7	7	5	-	-	-	-
I - Reception & Induction	57	175	-	-	232	410	2	-	412	180	-	-	86	-
M - Special Care C. C.														
U - Special Care Unit	1	19	-	-	20	27	-	-	27	7	-	-	-	-
M - Crisis Support Unit	7	3	1	1	12	-	18	-	18	6	-	-	-	-
- Lifestyles Unit	1	5	-	-	6	-	8	-	8	2	-	-	-	-
- Remand Centre	325	20	-	-	345	216	2	8	226	-119	9	-	52	-
Lithgow	48	224	-	-	272	298	-	-	298	26	1	-	35	-
Sub-total	596	1030	1	4	1631	1476	173	15	1664	33	24	0	277	0
Bathurst (Main)	43	174	-	-	217	220	4	-	224	7	-	-	9	-
M Broken Hill	8	35	-	1	44	14	14	-	28	-16	-	-	-	-
E Cooma	18	142	-	-	160	112	-	8	120	-40	-	-	-	-
D Grafton (Main)	47	85	-	7	139	42	-	12	54	-85	2	-	1	-
I Mulawa	-	-	59	111	170	162	52	8	222	52	-	4	-	13
U Parramatta	170	188	-	-	358	292	-	-	292	-66	1	-	-	-
M Parklea N.W.R.	83	186	-	-	295	405	-	-	405	110	-	-	-	-
- Work Release	-	26	-	-										
June (Medium)	35	237	-	-	272	368	16	-	384	112	-	-	174	-
Tamworth	13	45	-	-	58	-	66	-	66	8	1	-	1	-
Sub-total	417	1118	59	119	1713	1615	152	28	1795	82	4	4	185	13
Berrima	3	60	-	-	63	57	4	-	61	-2	-	-	-	-
Emu Plains	-	-	7	44	51	116	2	-	118	67	-	-	-	-
Norma Parker N.W.R.	-	-	2	45	62	16	46	28	90	28	-	-	-	-
- Work Release	-	-	-	15										
M Silverwater N.W.R.	18	238	-	-	398	45	408	-	453	55	-	-	-	-
I - Work Release	3	139	-	-										
N Goulburn (X-Wing)	10	103	-	-	113	90	-	-	90	-23	-	-	-	-
I Bathurst (X-Wing)	7	102	-	-	109	89	-	-	89	-20	-	-	-	-
M Grafton (C-Unit)	11	109	-	-	120	96	-	-	96	-24	-	-	-	-
U Industrial Training Centre	22	360	-	-	382	236	37	-	273	-109	-	-	-	-
M St Heliers	-	241	-	-	241	184	-	5	189	-52	1	-	-	-
Glen Innes	-	125	-	-	125	154	-	-	154	29	-	-	-	-
Mannus	3	120	-	-	123	81	48	12	141	18	-	-	-	-
Oberon	11	87	-	-	98	80	-	-	80	-18	-	-	-	-
Kirkconnell	5	191	-	-	196	70	60	-	130	-66	-	-	-	-
June (Minimum)	31	290	-	-	321	228	-	-	228	-93	1	-	200	-
John Morony	16	206	-	-	222	232	18	-	250	28	-	-	-	-
Cessnock	25	374	-	-	399	407	50	-	457	58	1	-	-	-
Sub-total	165	2745	9	104	3023	2181	673	45	2899	-124	3	0	200	0
TOTAL FULL-TIME	1178	4893	69	227	6367	5272	998	88	6358	-9	31	4	662	13

* Design accommodation in uncrowded conditions - amended 24th March, 1995.

N.W.R.=Non Work Release

**Difference between number of beds in uncrowded conditions and number of inmates.

S=Sentenced inmates (not including appellants) U/S=Unsentenced inmates (including appellants, trials, remandees and deportees)

Included in the above figures are:

Number of fine defaulters (in gaol for no other reason)	52 M +	7 F =	59	(including 0 at June)
Number of inmates on appeal	463 M +	24 F =	487	(including 66 at June)
Number of inmates on remand or for trial	713 M +	45 F =	758	(including 0 at June)
Number of juveniles under 18 years	0 M +	0 F =	0	(including 0 at June)
Total full-time inmates =	5774 (at DOCS institutions)	+	593 (at June)	= 6367

***** Research & Statistics *****

WEEKLY STATES FOR THE WEEK ENDING: 7TH MAY, 1995

PERIODIC DETAINEES (P.D.'S)	People with warrants			Attending			No.*	Beds*
	Stage1	Stage2	Total	Stage1	Stage2	Total	Beds	+/-
Campbelltown	98	17	115	52	16	68	52	0
Grafton	33	32	65	23	30	53	50	27
Malabar	131	41	172	81	41	122	164	83
Malabar Mid-week	54	33	87	41	28	69	164	123
Parramatta	55	8	63	44	6	50	33	-11
St Heliers	19	12	31	9	12	21	25	16
Silverwater	121	49	170	70	47	117	110	40
Silverwater Mid-week	116	45	161	67	45	112	110	43
Tomago	107	52	159	75	52	127	96	21
Windsor	100	29	129	62	29	91	60	-2
Administration**	3	0	3	0	0	0	0	0
Administration Midweek	1	1	2	0	1	1	0	0
Wollongong	79	22	101	53	21	74	82	29
Mannus	23	2	25	19	2	21	24	5
Total Males	940	343	1283	596	330	926	970	374

Emu Plains	68	32	100	39	29	68	40	1
Administration**	1	0	1	0	0	0	0	0
Mannus	1	0	1	1	0	1	6	5
Total Females	70	32	102	40	29	69	46	6

TOTAL P.D.'S	1010	375	1385	636	359	995	1016	380
---------------------	-------------	------------	-------------	------------	------------	------------	-------------	------------

* Number of free beds calculated on the numbers attending in Stage 1 and assuming uncrowded conditions.

Amended 26th March, 1995.

** Administration Stage 1 comprises detainees who have failed to attend for more than 8 consecutive weeks.

Number of fine defaulters attending periodic detention = 0.

The total number of people with warrants comprises:

Number attending		926	69	995
Number in full-time custody				
	sentenced-one month or less	3 M+	0 F=	3
	sentenced-more than one month	10 M+	0 F=	10
	remand	18 M+	0 F=	18
Number on appeal with bail		0 M+	0 F=	0
Number absent - leave applied for				
	- sick	86 M+	13 F=	99
	- other	21 M+	3 F=	24
Total absent - reasons known		138 M+	16 F=	154
Number absent without leave				
	- no reason given	92 M+	10 F=	102
	- legal action pending	124 M+	5 F=	129
	- appealing Sec 25 cancellation	3 M+	2 F=	5
Total absent without leave		219 M+	17 F=	236
Total number of people with warrants		1283 M+	102 F=	1385

WEEKLY STATES FOR THE WEEK ENDING:

7TH MAY, 1995

	Full-time Inmates		All Inmates Full-time + PD	
	No.	Date	No.	Date
Highest weekly state, year ending previous week	6462	5/6/94	7796	5/6/94
Lowest weekly state, year ending previous week	6110	29/1/95	7464	29/1/95
State for previous week (amended figure)	6341	30/4/95	7731	30/4/95
State for this week	6367	7/5/95	7752	7/5/95

WEEKLY STATES AT MIDNIGHT ON: 4TH JUNE, 1995

FULL-TIME INMATES	INMATES					*Accommodation in				Beds +/- **	Segregation		Protection	
	Males		Females		Total	Single Cells	Multi Cells	Dorm	Total Beds		M	F	M	F
	U/S	S	U/S	S										
Goulburn (Main)	49	327	-	-	376	314	55	-	369	-7	14	-	34	-
Maitland	65	152	-	-	217	51	76	-	127	-90	3	-	64	-
Long Bay Complex														
- Special Purpose Centre	11	45	-	3	59	60	-	-	60	1	-	-	-	-
M - L. B. Hospital - Med.	6	24	-	-	30	16	12	-	28	-2	-	-	-	-
A - L. B. Hospital - Psych.	38	52	-	-	90	84	-	-	84	-6	-	-	-	-
X - Prince Henry Annexe	2	1	-	-	3	-	-	7	7	4	-	-	-	-
I - Reception & Induction	55	180	-	-	235	410	2	-	412	177	-	-	81	-
M - Special Care C. C.														
U - Special Care Unit	2	18	-	-	20	27	-	-	27	7	-	-	-	-
M - Crisis Support Unit	7	4	2	-	13	-	18	-	18	5	-	-	-	-
- Lifestyles Unit	2	5	-	-	7	-	8	-	8	1	-	-	-	-
- Remand Centre	344	18	-	-	362	216	2	8	226	-136	10	-	53	-
Lithgow	54	231	-	-	285	298	-	-	298	13	1	-	39	-
Sub-total	635	1057	2	3	1697	1476	173	15	1664	-33	28	0	271	0
Bathurst (Main)	40	181	-	-	221	220	4	-	224	3	1	-	11	-
M Broken Hill	5	39	-	1	45	14	14	-	28	-17	-	-	-	-
E Cooma	20	139	-	-	159	112	-	8	120	-39	-	-	-	-
D Grafton (Main)	51	79	2	3	135	42	-	12	54	-81	1	-	1	-
I Murlawa	-	-	60	116	176	162	52	8	222	46	-	3	-	12
U Parramatta	178	195	-	-	373	292	-	-	292	-81	1	-	-	-
M Parklea N.W.R.	78	196	-	-	298	405	-	-	405	107	-	-	-	-
- Work Release	-	24	-	-										
Junee (Medium)	37	229	-	-	266	368	16	-	384	118	4	-	165	-
Tamworth	13	45	-	-	58	-	66	-	66	8	1	-	4	-
Sub-total	422	1127	62	120	1731	1615	152	28	1795	64	8	3	181	12
Berrima	3	59	-	-	62	57	4	-	61	-1	-	-	-	-
Emu Plains N.W.R.	-	-	7	58	66	116	2	-	118	52	-	-	-	-
- Work Release	-	-	-	1										
Norma Parker N.W.R.	-	-	2	47	63	16	46	28	90	27	-	-	-	-
- Work Release	-	-	-	14										
M Silverwater N.W.R.	15	224	-	-	381	45	408	-	453	72	-	-	-	-
I - Work Release	2	140	-	-										
N Goulburn (X-Wing)	8	91	-	-	99	90	-	-	90	-9	-	-	-	-
I Bathurst (X-Wing)	5	86	-	-	91	89	-	-	89	-2	-	-	-	-
M Grafton (C-Unit)	9	111	-	-	120	96	-	-	96	-24	-	-	-	-
U Industrial Training Centre	22	354	-	-	376	236	37	-	273	-103	-	-	-	-
M St Heliers	-	235	-	-	235	184	-	5	189	-46	-	-	-	-
Glen Innes	-	123	-	-	123	154	-	-	154	31	-	-	-	-
Mannus	3	124	-	-	127	81	48	12	141	14	-	-	-	-
Oberon	10	85	-	-	95	80	-	-	80	-15	-	-	-	-
Kirkconnell	6	190	-	-	196	70	60	-	130	-66	-	-	-	-
Junee (Minimum)	26	298	-	-	324	228	-	-	228	-96	-	-	200	-
John Morony	13	206	-	-	219	232	18	-	250	31	-	-	-	-
Cessnock	34	375	-	-	409	407	50	-	457	48	3	-	2	-
Sub-total	156	2701	9	120	2986	2181	673	45	2899	-87	3	0	202	0
TOTAL FULL-TIME	1213	4885	73	243	6414	5272	998	88	6358	-56	39	3	654	12

* Design accommodation in uncrowded conditions - amended 24th March, 1995.

N.W.R.=Non Work Release

**Difference between number of beds in uncrowded conditions and number of inmates.

S=Sentenced inmates (not including appellants) U/S=Unsentenced inmates (including appellants, trials, remandees and deportees)

Included in the above figures are:

Number of fine defaulters (in gaol for no other reason)	45 M +	16 F =	61	(including 0 at Junee)
Number of inmates on appeal	457 M +	28 F =	485	(including 63 at Junee)
Number of inmates on remand or for trial	754 M +	45 F =	799	(including 0 at Junee)
Number of juveniles under 18 years	0 M +	0 F =	0	(including 0 at Junee)
Total full-time inmates =	5824 (at DOCS institutions)	+	590 (at Junee)	= 6414

WEEKLY STATES FOR THE WEEK ENDING: 4TH JUNE, 1995

PERIODIC DETAINEES (P.D.'S)	People with warrants			Attending			No.*	Beds*
	Stage1	Stage2	Total	Stage1	Stage2	Total	Beds	+/-
Campbelltown	90	20	110	52	18	70	52	0
Grafton	34	31	65	26	29	55	50	24
Malabar	127	43	170	75	42	117	164	89
Malabar Mid-week	54	29	83	37	27	64	164	127
Parramatta	55	7	62	43	6	49	33	-10
St Heliers	18	12	30	13	12	25	25	12
Silverwater	125	48	173	72	43	115	110	38
Silverwater Mid-week	114	50	164	66	49	115	110	44
Tomago	117	57	174	71	55	126	96	25
Windsor	92	30	122	58	29	87	60	2
Administration**	9	0	9	0	0	0	0	0
Administration Midweek	1	1	2	0	1	1	0	0
Wollongong	88	23	111	56	22	78	82	26
Mannus	25	4	29	19	4	23	24	5
Total Males	949	355	1304	588	337	925	970	382

Emu Plains	64	35	99	32	32	64	40	8
Administration**	2	0	2	0	0	0	0	0
Mannus	1	0	1	0	0	0	6	6
Total Females	67	35	102	32	32	64	46	14

TOTAL P.D.'S	1016	390	1406	620	369	989	1016	396
---------------------	-------------	------------	-------------	------------	------------	------------	-------------	------------

* Number of free beds calculated on the numbers attending in Stage 1 and assuming uncrowded conditions.

Amended 26th March, 1995.

** Administration Stage 1 comprises detainees who have failed to attend for more than 8 consecutive weeks.

Number of fine defaulters attending periodic detention = 2.

The total number of people with warrants comprises:

Number attending		925	64	989
Number in full-time custody	sentenced-one month or less	4 M +	0 F =	4
	sentenced-more than one month	12 M +	1 F =	13
	remand	14 M +	1 F =	15
Number on appeal with bail		1 M +	0 F =	1
Number absent - leave applied for	- sick	86 M +	16 F =	102
	- other	31 M +	7 F =	38
Total absent - reasons known		148 M +	25 F =	173
Number absent without leave	- no reason given	94 M +	8 F =	102
	- legal action pending	134 M +	5 F =	139
	- appealing Sec'25 cancellation	3 M +	0 F =	3
Total absent without leave		231 M +	13 F =	244
Total number of people with warrants		1304 M +	102 F =	1406

WEEKLY STATES FOR THE WEEK ENDING: 4TH JUNE, 1995

	Full-time Inmates		All Inmates Full-time + PD	
	No.	Date	No.	Date
Highest weekly state, year ending previous week	6462	5/6/94	7817	28/5/95
Lowest weekly state, year ending previous week	6110	29/1/95	7464	29/1/95
State for previous week (amended figure)	6419	28/5/95	7817	28/5/95
State for this week	6414	4/6/95	7820	4/6/95

WEEKLY STATES AT MIDNIGHT ON: 25TH JUNE, 1995

FULL-TIME INMATES		INMATES				*Accommodation in				Beds +/- **	Segregation		Protection		
		Males		Females		Total	Single Cells	Multi Cells	Dorm		Total Beds	M	F	M	F
		U/S	S	U/S	S										
	Goulburn (Main)	48	334	-	-	382	314	55	-	369	-13	24	-	39	-
	Maitland	55	157	-	-	212	51	76	-	127	-85	6	-	61	-
	Long Bay Complex														
	- Special Purpose Centre	11	43	-	3	57	60	-	-	60	3	-	-	-	-
M	- L. B. Hospital - Med.	10	18	-	-	28	16	12	-	28	0	-	-	-	-
A	- L. B. Hospital - Psych.	27	61	-	-	88	84	-	-	84	-4	-	-	-	-
X	- Prince Henry Annexe	-	1	-	-	1	-	-	7	7	6	-	-	-	-
I	- Reception & Induction	43	192	-	-	235	410	2	-	412	177	-	-	86	-
M	- Special Care C. C.														
U	- Special Care Unit	1	16	-	-	17	27	-	-	27	10	-	-	-	-
M	- Crisis Support Unit	7	4	2	-	13	-	18	-	18	5	-	-	-	-
	- Lifestyles Unit	2	6	-	-	8	-	8	-	8	0	-	-	-	-
	- Remand Centre	333	19	-	-	352	216	2	8	226	-126	10	-	56	-
	Lithgow	50	225	-	-	275	298	-	-	298	23	-	-	39	-
	Sub-total	587	1076	2	3	1668	1476	173	15	1664	-4	40	0	281	0
	Bathurst (Main)	39	187	-	-	226	220	4	-	224	-2	1	-	15	-
M	Broken Hill	4	40	-	1	45	14	14	-	28	-17	-	-	-	-
E	Cooma	18	142	-	-	160	112	-	8	120	-40	-	-	-	-
D	Grafton (Main)	44	83	-	5	132	42	-	12	54	-78	-	-	-	-
I	Mulawa	-	-	57	119	176	162	52	8	222	46	-	1	-	12
U	Parramatta	159	254	-	-	413	292	-	-	292	-121	3	-	-	-
M	Parklea N.W.R.	76	197	-	-	291	405	-	-	405	114	1	-	-	-
	- Work Release	-	18	-	-	-	-	-	-	-	-	-	-	-	-
	Junee (Medium)	36	224	-	-	260	368	16	-	384	124	-	-	167	-
	Tamworth	19	41	-	-	60	-	66	-	66	6	1	-	1	-
	Sub-total	395	1186	57	125	1763	1615	152	28	1795	32	6	1	183	12
	Berrima	4	59	-	-	63	57	4	-	61	-2	-	-	-	-
	Emu Plains N.W.R.	-	-	8	58	67	116	2	-	118	51	-	-	-	-
	- Work Release	-	-	-	1	-	-	-	-	-	-	-	-	-	-
	Norma Parker N.W.R.	-	-	4	38	55	16	46	28	90	35	-	-	-	-
	- Work Release	-	-	-	13	-	-	-	-	-	-	-	-	-	-
M	Silverwater N.W.R.	13	234	-	-	385	45	408	-	453	68	-	-	-	-
I	- Work Release	2	136	-	-	-	-	-	-	-	-	-	-	-	-
N	Goulburn (X-Wing)	4	101	-	-	105	90	-	-	90	-15	-	-	-	-
I	Bathurst (X-Wing)	6	88	-	-	94	89	-	-	89	-5	-	-	-	-
M	Grafton (C-Unit)	10	102	-	-	112	96	-	-	96	-16	-	-	-	-
U	Industrial Training Centre	22	344	-	-	366	236	37	-	273	-93	-	-	-	-
M	St Heliers	-	235	-	-	235	184	-	5	189	-46	-	-	1	-
	Glen Innes	-	123	-	-	123	154	-	-	154	31	-	-	-	-
	Mannus	3	121	-	-	124	81	48	12	141	17	-	-	-	-
	Oberon	8	87	-	-	95	80	-	-	80	-15	-	-	-	-
	Kirkconnell	7	184	-	-	191	70	60	-	130	-61	-	-	-	-
	Junee (Minimum)	19	303	-	-	322	228	-	-	228	-94	-	-	199	-
	John Morony	17	207	-	-	224	232	18	-	250	26	1	-	-	-
	Cessnock	33	382	-	-	415	407	50	-	457	42	-	-	2	-
	Sub-total	148	2706	12	110	2976	2181	673	45	2899	-77	1	0	202	0
	TOTAL FULL-TIME	1130	4968	71	238	6407	5272	998	88	6358	-49	47	1	666	12

* Design accommodation in uncrowded conditions - amended 24th March, 1995.

N.W.R.=Non Work Release

**Difference between number of beds in uncrowded conditions and number of inmates.

S=Sentenced inmates (not including appellants) U/S=Unsentenced inmates (including appellants, trials, remandees and deportees)

Included in the above figures are:

Number of fine defaulters (in gaol for no other reason) 63 M + 11 F = 74 (including 0 at Junee)

Number of inmates on appeal 431 M + 32 F = 463 (including 55 at Junee)

Number of inmates on remand or for trial 696 M + 39 F = 735 (including 0 at Junee)

Number of juveniles under 18 years 0 M + 0 F = 0 (including 0 at Junee)

Total full-time inmates = 5825 (at DOCS institutions) + 582 (at Junee) = 6407

***** Research & Statistics *****

WEEKLY STATES FOR THE WEEK ENDING: 25TH JUNE, 1995

PERIODIC

DETAINEES (P.D.'S)

	People with warrants			Attending			No.*	Beds*
	Stage1	Stage2	Total	Stage1	Stage2	Total	Beds	+/-
Campbelltown	89	18	107	44	17	61	52	8
Grafton	28	31	59	23	31	54	50	27
Malabar	120	44	164	66	43	109	164	98
Malabar Mid-week	50	27	77	30	24	54	164	134
Parramatta	60	10	70	42	9	51	33	-9
St Heliers	23	6	29	21	6	27	25	4
Silverwater	146	59	205	82	59	141	110	28
Silverwater Mid-week	121	51	172	67	50	117	110	43
Tomago	105	60	165	61	59	120	96	35
Windsor	89	30	119	57	28	85	60	3
Administration**	9	0	9	0	0	0	0	0
Administration Midweek	2	1	3	0	1	1	0	0
Wollongong	74	27	101	43	26	69	82	39
Mannus	22	7	29	14	7	21	24	10
Total Males	938	371	1309	550	360	910	970	420

Emu Plains	60	37	97	31	34	65	40	9
Administration**	2	0	2	0	0	0	0	0
Mannus	0	1	1	0	1	1	6	6
Total Females	62	38	100	31	35	66	46	15

TOTAL P.D.'S	1000	409	1409	581	395	976	1016	435
---------------------	-------------	------------	-------------	------------	------------	------------	-------------	------------

* Number of free beds calculated on the numbers attending in Stage 1 and assuming uncrowded conditions.

Amended 26th March, 1995.

** Administration Stage 1 comprises detainees who have failed to attend for more than 8 consecutive weeks.

Number of fine defaulters attending periodic detention = 1.

The total number of people with warrants comprises:

Number attending		910	66	976
Number in full-time custody	sentenced-one month or less	0 M +	0 F =	0
	sentenced-more than one month	8 M +	1 F =	9
	remand	22 M +	0 F =	22
Number on appeal with bail		1 M +	0 F =	1
Number absent - leave applied for	- sick	88 M +	14 F =	102
	- other	31 M +	3 F =	34
Total absent - reasons known		150 M +	18 F =	168
Number absent without leave	- no reason given	108 M +	11 F =	119
	- legal action pending	138 M +	5 F =	143
	- appealing Sec 25 cancellation	3 M +	0 F =	3
Total absent without leave		249 M +	16 F =	265
Total number of people with warrants		1309 M +	100 F =	1409

WEEKLY STATES FOR THE WEEK ENDING:

25TH JUNE, 1995

	Full-time Inmates		All Inmates Full-time + PD	
	No.	Date	No.	Date
Highest weekly state, year ending previous week	6432*	3/7/94	7824	18/6/95
Lowest weekly state, year ending previous week	6110	29/1/95	7464	29/1/95
State for previous week (amended figure*)	6409*	18/6/95	7824*	18/6/95
State for this week	6407	25/6/95	7816	25/6/95