



# Statistical Publication

**Inmate Statistics**  
(Weekly States)  
July 1995 to June 1996

**Sylviane Mariasson**

**Statistical Publication No.12**  
**August 1996**  
**ISSN 0814 1215**

**NSW Department of Corrective Services**

---

## CONTENTS

Acknowledgements .....	ii
Introduction .....	1
Daily average number of inmates in NSW .....	6
Trends in the inmate population 1973 - 1996 .....	7
Annual Trends in the inmate population 1973 - 1995/6 .....	8
Inmates in full-time custody and periodic detention warrants .....	9
Status of inmates in full-time custody .....	11
Sex of inmates in full-time custody .....	15
Periodic detainees - Total warrants and number attending .....	17
Classification of institution in which inmates are held .....	19
Number of appellants in full-time custody .....	21
Segregation and protection .....	23
Number of fine defaulters in full-time custody .....	25
Number of unsentenced inmates less appellant .....	27
Profile on last Sunday of June 1996 .....	29
Institutional security - Percentage on last Sunday of June 1996 .....	30
Periodic Detainees - Attendance and reasons for non-attendance .....	31
Weekly states - First Sunday of each month .....	32

---

**ACKNOWLEDGEMENTS:**

Many thanks to the Deputy Governors and the Clerks of each institution who provide their Correctional Centre's Weekly State on a regular basis.

Thanks also to the staff of the Research and Statistics Unit who were involved with the compilation of these statistics: Nicolle Tierney who collected and collated the information and typed the returns, Barbara Thompson who assisted with the introduction and checked the returns, as well as Margaret Bowery, Antonia Barila and Simon Eyland who also checked the returns and Ed Dickson who typed the text.

---

## INTRODUCTION

This is the twelfth annual collection of inmate statistics derived from the Weekly States reports. The "Weekly States" is a statistical collection of information about the inmate population of each correctional centre in NSW as at midnight Sunday each week. As for previous years, this information is categorised in terms of the correctional centre, the sex of the inmate, and whether the inmate is being held under sentence (serving a determinate sentence or life sentence or held as a forensic patient or fine defaulter) or not under sentence (remandee, appellant or deportee). Totals for inmates in full-time custody are separated from periodic detainees. Two counts are provided for periodic detainees: a count of those who actually attended periodic detention during any week; and a count of the number of people with periodic detention orders. There is also an overall count for each of the reasons given for non-attendance as known at that detention period. These are grouped as "reasons known" (in full-time custody on appeal with bail or leave (sick or other) applied for) and absent without leave (no reason given, or legal action pending). Each week's total state is compared with the highest and lowest weekly state in the previous twelve months, as well as with the weekly state of the previous week.

Information on the numbers held on segregation, protection, the number of appellants and the number of juveniles (aged under 18 years) is presented. Accommodation details including a comparison of the design accommodation of the institution with the numbers of inmates held are also provided. Since November 1991 information is also presented on the numbers of fine defaulters (inmates in custody for the sole reason of default of fine) and the numbers held on remand or for trial. The number of fine defaulters, appellants, remands/trials and juveniles at Juncie (the state's only private prison is also shown).

The "Weekly States" is, as the name implies, issued on a weekly basis. The purpose of this annual collection is to present information from these Weekly States statistical reports in a more convenient format to facilitate those interested in examining trends. Tables and graphs portraying weekly totals of:

- full-time custody versus periodic detainees;
- sentenced versus unsentenced;
- males versus females;
- male periodic detainees versus female periodic

---

detainees;

- those held in maximum versus medium versus minimum security institutions;
- appellants;
- inmates held under protection or segregation;
- fine defaulters

for each Sunday in the 1995/96 financial year are provided in this publication. In addition, individual Weekly States reports for the first Sunday in each month as well as the last Sunday in the financial year are reproduced. To place the 1995/96 figures in context, a summary of NSW inmate population trends since 1973 is also provided.

The information in this publication replaces any figures previously released.

### ***Highlights***

The daily average of 6288 inmates in full-time custody (excluding periodic detainees) is 9 lower than for 1994/95.

The number of sentenced inmates (excluding appellants) rose from an average of 4876 in July, 1995 to 4733 in June, 1996.

The number of male appellants fell from an average of 471 in the first 4 months of the year, to an average of 434 during the last 8 months of the year.

There was little overall change in the number of inmates on remand.

There was an increase in the number of people with periodic detention warrants; 8 % more males and 4 % more females.

The number of inmates in segregation fluctuated between 21 and 54.

The number of inmates on protection rose from an average of 680 in the first six months to an average of 752 in the last six months of the year.

The number of fine defaulters fluctuated between 66 and 107.

---

The table on page 4 provides comparisons between the numbers held at the end of the different financial years. However, even within the twelve month period of this report, other significant fluctuations occurred in the size of the inmate population. The variation in the total number of inmates in full-time custody during 1995/96 was 282, more than the design capacity of a smaller correctional centre like John Morony Correctional Centre (250). It is interesting to also note the size of the fluctuation within different sections of the inmate population. Male sentenced (282), male unsentenced (196), female sentenced (43), female unsentenced (36), maximum security (169), medium security (90), and minimum security (145).

**Changes in the size of various components of the inmate population in recent years**  
**Number present on last Sunday of financial year**

	<i>This year 30.6.96</i>	<i>1 year earlier 25.6.95</i>	<i>2 years earlier 26.6.94</i>	<i>5 years earlier 30.6.91</i>
Full-time custody	6261	6407	6409	5956
Unsentenced	1278	1201	1328	1294
Sentenced	4983	5206	5081	4662
Males	5925	6098	6098	5625
Females	336	309	311	331
Maximum Security <sup>(1)(2)</sup>	1532	1668	1757	2208
Medium Security <sup>(1)(2)</sup>	1757	1763	1826	1964
Minimum Security <sup>(1)</sup>	2972	2976	2826	1784
Juveniles	1	0	0	0
Segregation	34	48	29	56
Protection	776	678	449	629
Appellants	473	463	569	482
P.D.C. <sup>(3)</sup>	1518	1409	1344	1263
Male P.D.C. <sup>(3)</sup>	1414	1309	1256	1195
Female P.D.C. <sup>(3)</sup>	104	100	88	68

- (1) These figures refer to the security classifications of the institutions in which the inmates were held. They do **not** refer to individual inmate security classifications.
- (2) At the end of the 1992/93 financial year John Morony was in the process of being reclassified from maximum security to minimum security, Tamworth from maximum to medium and Cessnock from medium to minimum security. These security classification changes were not made on the Weekly States until 4th July, 1993.
- (3) These are numbers of people with periodic detention warrants. Counting rules for periodic detention warrants changed during 1990-91. For further information on the way in which these counting rules changed, refer to "Prisoner Statistics (Weekly States) July 1990 to June 1991".

NOTE: All inmates at Parklea (complex of minimum, medium and maximum security) and all inmates at Mulawa are counted as medium security.

*Percentage change in various components of the inmate population in recent years*

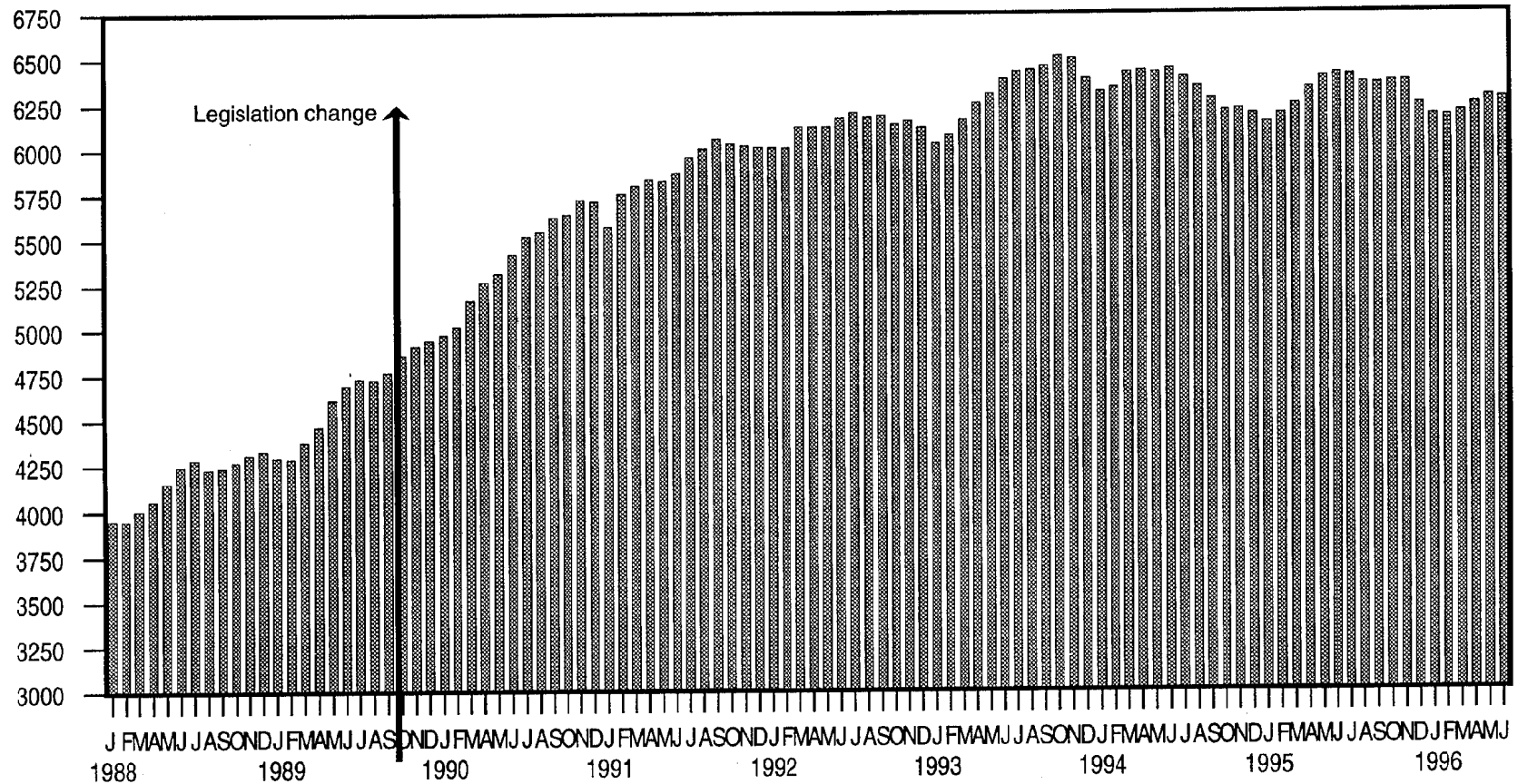
	Change in past year 25.6.95 - 30.6.96	Change in past 2 years 27.6.94 - 25.6.96	Change in past 5 years 30.6.91 - 30.6.96
Full-time custody	-2.3 %	-2.3 %	+5.1 %
Unsentenced	+6.4 %	-3.8 %	-1.2 %
Sentenced	-4.3 %	-1.9 %	+6.9 %
Males	-2.8 %	-2.8 %	+5.3 %
Females	+8.7 %	+8.0 %	+1.5 %
Maximum Security <sup>(1)(2)</sup>	-8.2 %	-12.8 %	-30.6 %
Medium Security <sup>(1)(2)</sup>	-0.3 %	-3.8 %	-10.5 %
Minimum Security <sup>(1)</sup>	-0.1 %	+5.2 %	+66.5 %
Segregation	-29.2 %	+17.2 %	-39.3 %
Protection	+14.5 %	+72.8 %	+23.3 %
Appellants	+2.2 %	-16.9 %	-1.9 %
P.D.C. <sup>(3)</sup>	+7.7 %	+12.9 %	+20.2 %
Male P.D.C. <sup>(3)</sup>	+8.0 %	+12.6 %	+18.3 %
Female P.D.C. <sup>(3)</sup>	+4.0 %	18.2 %	+52.9 %

- (1) These figures refer to the security classifications of the institutions in which the inmates were held. They do **not** refer to individual inmate security classifications.
- (2) At the end of the 1992/93 financial year John Morony was in the process of being reclassified from maximum security to minimum security, Tamworth from maximum to medium and Cessnock from medium to minimum security. These security classification changes were not made on the Weekly States until 4th July, 1993.
- (3) These are numbers of people with periodic detention warrants. Counting rules for periodic detention warrants changed during 1990-91. For further information on the way in which these counting rules changed, refer to "Prisoner Statistics (Weekly States) July 1990 to June 1991".

NOTE: All inmates at Parklea (complex of minimum, medium and maximum security) and all inmates at Mulawa are counted as medium security.

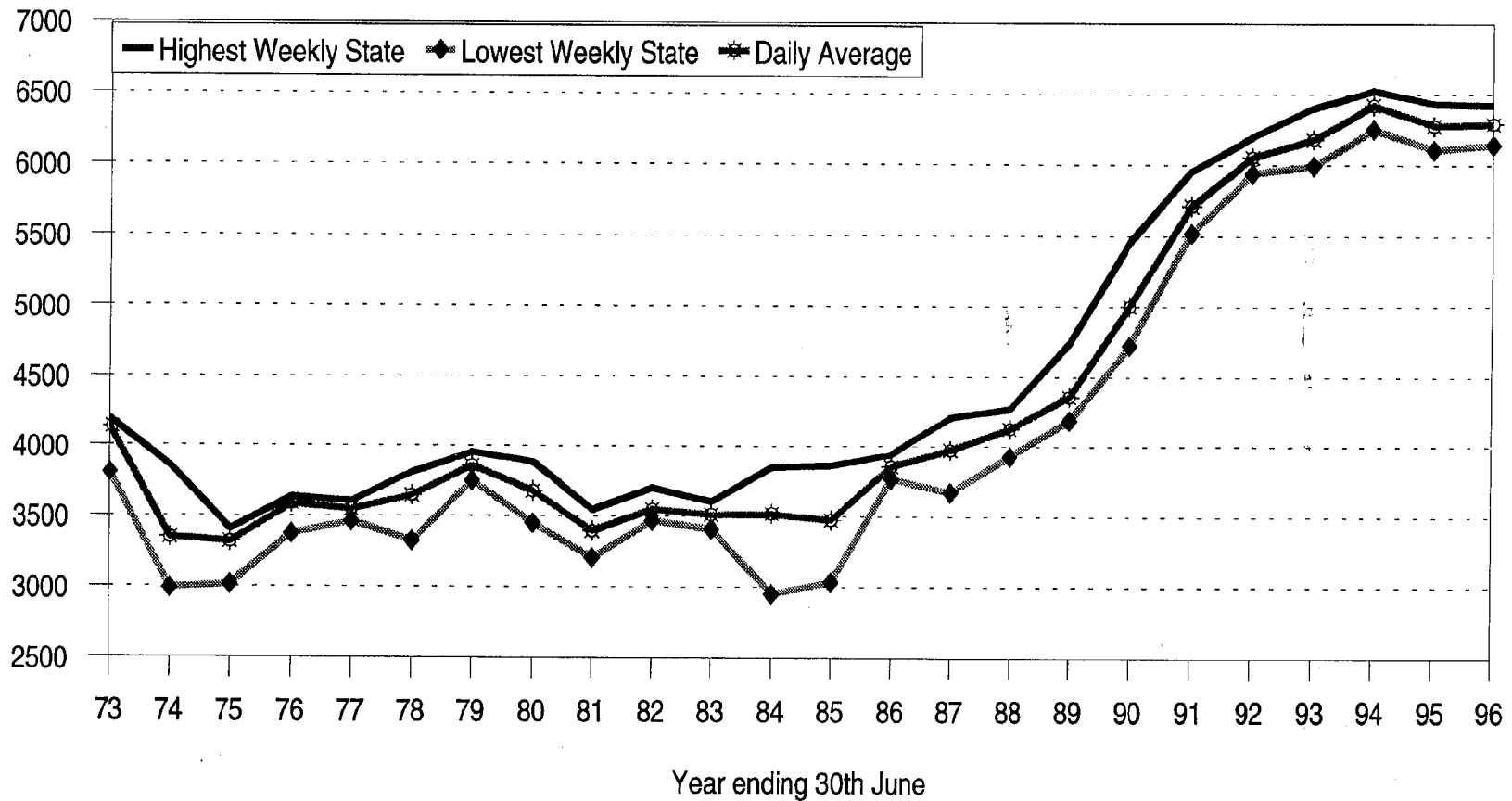


# Daily Average Number of Inmates in NSW Correctional Centres (excludes Periodic Detainees)



Research & Statistics, NSW Department of Corrective Services.

# Trends in the Inmate Population 1973 to 1996



Research & Statistics, NSW Department of Corrective Services

### Annual Trends in the Inmate Population since 1973 to 1996

Year Ending 30 June	Daily Average <sup>1</sup>	Rate per 100,000 NSW Population <sup>2</sup>	% Change from last year	Lowest Weekly State <sup>3</sup>	Highest Weekly State <sup>3</sup>	Difference	
						No.	% of Average
1973 <sup>(4)</sup>	4130	85.7	- 0.3%	3803	4192	389	9.4%
1974	3348	68.8	- 18.9%	2988	3854	866	25.9%
1975	3318	67.5	- 0.9%	3015	3405	390	11.8%
1976	3587	72.5	+ 8.1%	3373	3637	264	7.4%
1977	3547	71.2	- 1.1%	3462	3605	143	4.0%
1978	3645	72.5	+ 2.8%	3326	3808	482	13.2%
1979	3858	75.9	+ 5.8%	3749	3952	203	5.3%
1980	3677	71.5	- 4.7%	3453	3885	432	11.7%
1981	3398	65.3	- 7.6%	3208	3546	338	9.9%
1982	3549	67.3	+ 4.4%	3471	3699	228	6.4%
1983	3511	65.8	- 1.1%	3408	3605	197	5.6%
1984	3518	65.3	+ 0.2%	2948	3851	903	25.7%
1985	3473	63.8	- 1.3%	3034	3862	828	23.8%
1986	3854	70.1	+ 11.0%	3767	3943	176	4.6%
1987	3971	71.3	+ 3.0%	3668	4210	542	13.6%
1988	4124	72.9	+ 3.9%	3925	4271	346	8.4%
1989	4358	75.9	+ 5.7%	4187	4742	555	12.7%
1990	5002	86.3	+ 14.8%	4722	5457	735	14.7%
1991	5712	97.4	+ 14.2%	5521	5956	435	7.6%
1992	6056	102.1 <sup>5</sup>	+ 6.0%	5940	6201	261	4.3%
1993	6181	103.3 <sup>5</sup>	+ 2.1%	5995	6405	410	6.6%
1994	6423	106.6 <sup>5</sup>	+ 3.9%	6255	6526	271	4.2%
1995	6279	103.4 <sup>5</sup>	- 2.2%	6110	6432	322	5.1%
1996	6290	106.8 <sup>5</sup>	+ 0.2%	6142	6424	282	4.5%
<b>Average</b>	<b>4358</b>	<b>80.0</b>	<b>+2.2%</b>	<b>4136</b>	<b>4552</b>	<b>416</b>	<b>10.5%</b>

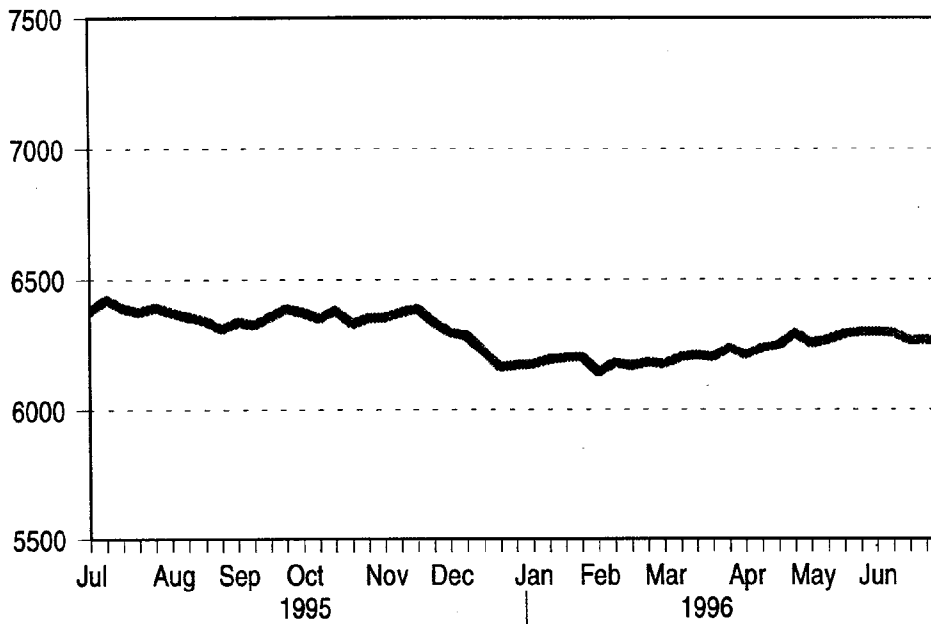
- (1) Excluding the number in Periodic Detention.
- (2) Based on Australian Bureau of Statistics estimates of the mean resident population of New South Wales for the relevant financial year (Catalogue No. 3101.0).
- (3) Taken at midnight each Sunday, excluding Periodic Detainees.
- (4) For calendar year ending 31 December.
- (5) Preliminary figures.

**Weekly States July 1995 - June 1996**  
**Inmates in Full-time Custody and People with Periodic Detention Warrants**

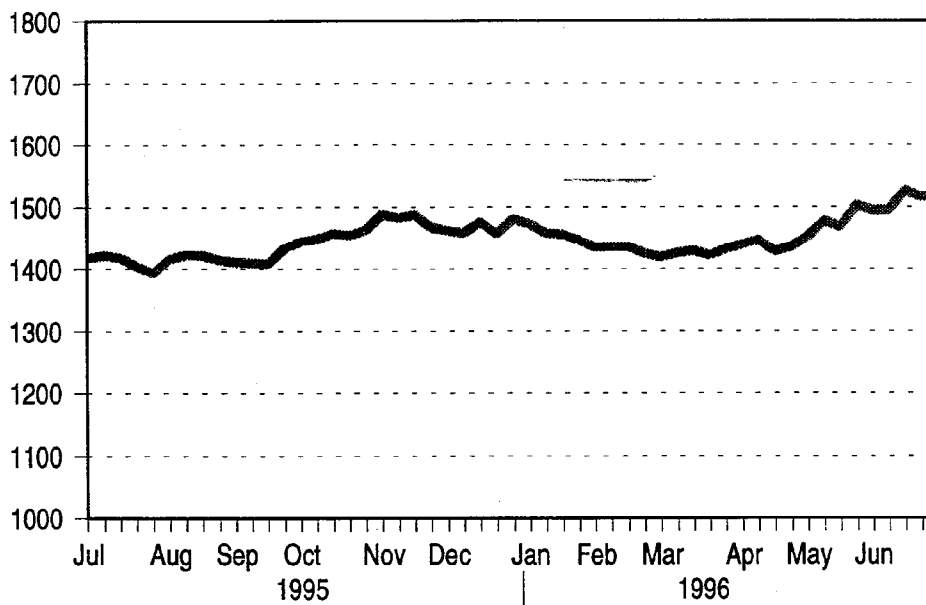
Date	Full-time Custody	Periodic Detainees	Total Inmates & Detainees	Date	Full-time Custody	Periodic Detainees	Total Inmates & Detainees
2 July, 1995	6380	1417	7797	7 January, 1996	6175	1473	7648
9 July, 1995	6424	1422	7846	14 January, 1996	6192	1458	7650
16 July, 1995	6390	1418	7808	21 January, 1996	6199	1456	7655
23 July, 1995	6376	1404	7780	28 January, 1996	6201	1446	7647
30 July, 1995	6394	1394	7788	4 February, 1996	6142	1435	7577
6 August, 1995	6372	1415	7787	11 February, 1996	6178	1436	7614
13 August, 1995	6357	1423	7780	18 February, 1996	6168	1436	7604
20 August, 1995	6341	1422	7763	25 February, 1996	6180	1425	7605
27 August, 1995	6311	1414	7725	3 March, 1996	6175	1419	7594
3 September, 1995	6338	1411	7749	10 March, 1996	6202	1426	7628
10 September, 1995	6327	1410	7737	17 March, 1996	6207	1429	7636
17 September, 1995	6358	1408	7766	24 March, 1996	6202	1422	7624
24 September, 1995	6388	1433	7821	31 March, 1996	6236	1432	7668
1 October, 1995	6373	1444	7817	7 April, 1996	6211	#	#
8 October, 1995	6351	1448	7799	14 April, 1996	6236	1447	7683
15 October, 1995	6382	1457	7839	21 April, 1996	6247	1428	7675
22 October, 1995	6331	1455	7786	28 April, 1996	6295	1436	7731
29 October, 1995	6352	1463	7815	5 May, 1996	6258	1453	7711
5 November, 1995	6356	1488	7844	12 May, 1996	6271	1478	7749
12 November, 1995	6375	1483	7858	19 May, 1996	6292	1469	7761
19 November, 1995	6389	1488	7877	26 May, 1996	6300	1503	7803
26 November, 1995	6336	1468	7804	2 June, 1996	6300	1495	7795
3 December, 1995	6296	1462	7758	9 June, 1996	6296	1496	7792
10 December, 1995	6286	1458	7744	16 June, 1996	6267	1526	7793
17 December, 1995	6221	1476	7697	23 June, 1996	6270	1516	7786
24 December, 1995	6164	1457	7621	30 June, 1996	6261	1518	7779
31 December, 1995	6169	1481	7650				

# Periodic Detention Centres closed over Easter.

## Inmates in Full-time Custody



## People with Periodic Detention Warrants



Research & Statistics, NSW Department of Corrective Services

**Weekly States July 1995 - June 1996**  
**Status of Inmates in Full-time Custody**

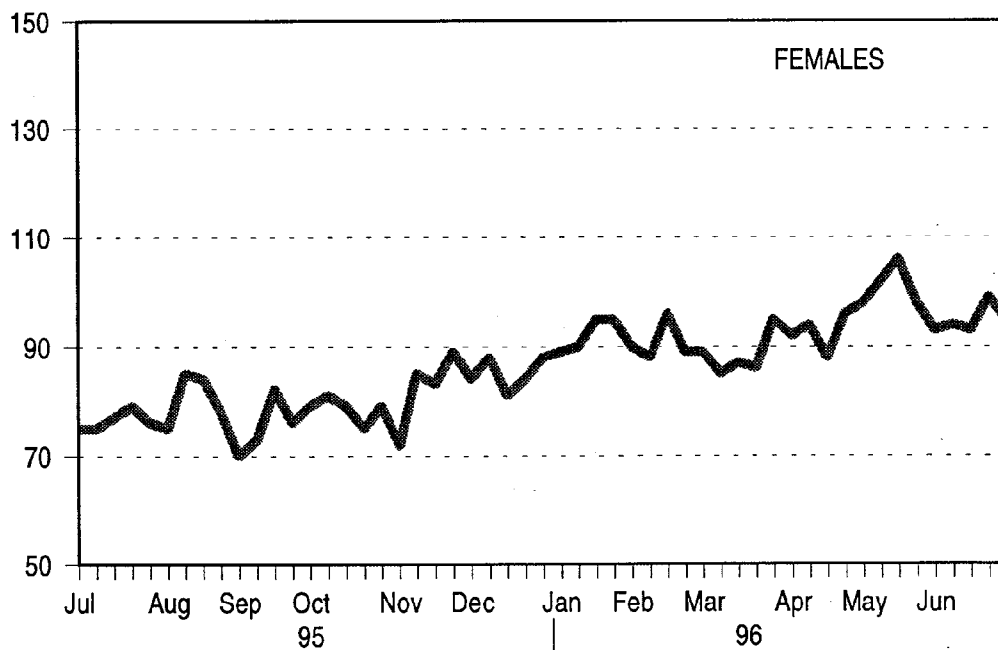
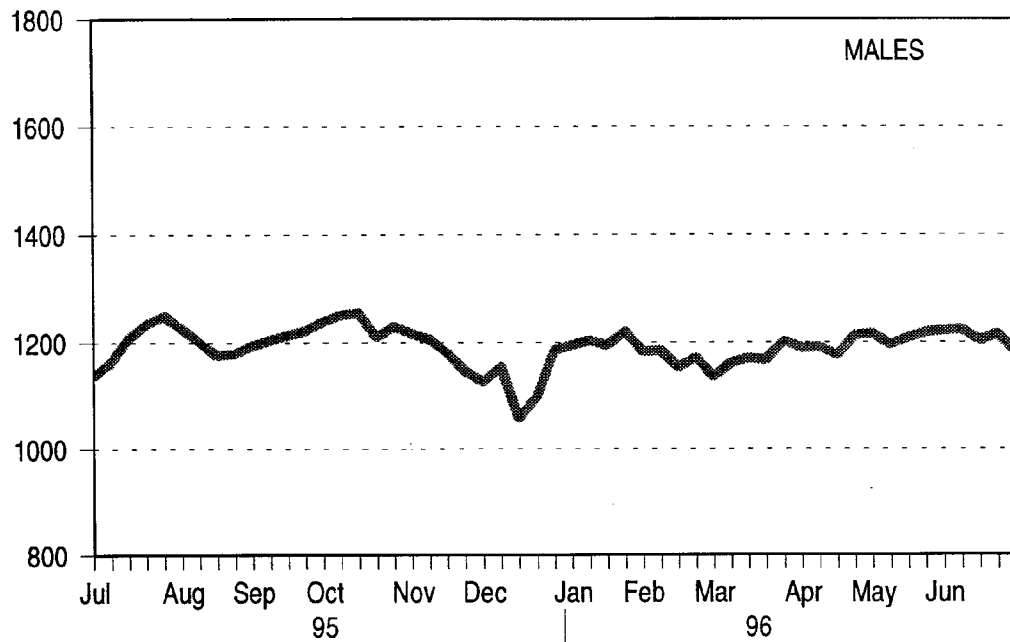
Date	Unsentenced* Inmates			Sentenced* Inmates			Total Inmates
	Male	Female	Total Unsentenced Inmates	Male	Female	Total Sentenced Inmates	
2 July, 1995	1138	75	1213	4927	240	5167	6380
9 July, 1995	1164	75	1239	4940	245	5185	6424
16 July, 1995	1208	77	1285	4863	242	5105	6390
23 July, 1995	1234	79	1313	4822	241	5063	6376
30 July, 1995	1249	76	1325	4828	241	5069	6394
6 August, 1995	1227	75	1302	4823	247	5070	6372
13 August, 1995	1202	85	1287	4825	245	5070	6357
20 August, 1995	1176	84	1260	4830	251	5081	6341
27 August, 1995	1180	78	1258	4811	242	5053	6311
3 September, 1995	1194	70	1264	4828	246	5074	6338
10 September, 1995	1205	73	1278	4813	236	5049	6327
17 September, 1995	1213	82	1295	4831	232	5063	6358
24 September, 1995	1222	76	1298	4855	235	5090	6388
1 October, 1995	1239	79	1318	4827	228	5055	6373
8 October, 1995	1251	81	1332	4789	230	5019	6351
15 October, 1995	1255	79	1334	4813	235	5048	6382
22 October, 1995	1210	75	1285	4807	239	5046	6331
29 October, 1995	1230	79	1309	4808	235	5043	6352
5 November, 1995	1217	72	1289	4821	246	5067	6356
12 November, 1995	1206	85	1291	4840	244	5084	6375
19 November, 1995	1181	83	1264	4893	232	5125	6389
26 November, 1995	1147	89	1236	4871	229	5100	6336
3 December, 1995	1128	84	1212	4858	226	5084	6296
10 December, 1995	1156	88	1244	4815	227	5042	6286
17 December, 1995	1059	81	1140	4843	238	5081	6221
24 December, 1995	1100	84	1184	4751	229	4980	6164
31 December, 1995	1186	88	1274	4670	225	4895	6169

\*"Unsentenced" includes remands, trials, appellants and deportees

\*\*"Sentenced" includes sentenced to term imprisonment, life sentence, forensic patient and fine defaulters

# Number of Unsentenced Inmates in Full-time Custody

("Unsentenced" includes: Remands, Trials, Appellants and Deportees)



Research & Statistics, NSW Department of Corrective Services

**Weekly States July 1995 - June 1996**  
**Status of Inmates in Full-time Custody**

Date	Unsentenced* Inmates			Sentenced† Inmates			Total Inmates
	Male	Female	Total Unsentenced Inmates	Male	Female	Total Sentenced Inmates	
7 January, 1996	1195	89	1284	4679	212	4891	6175
14 January, 1996	1204	90	1294	4690	208	4898	6192
21 January, 1996	1195	95	1290	4691	218	4909	6199
28 January, 1996	1220	95	1315	4668	218	4886	6201
4 February, 1996	1183	90	1273	4658	211	4869	6142
11 February, 1996	1185	88	1273	4691	214	4905	6178
18 February, 1996	1154	96	1250	4692	226	4918	6168
25 February, 1996	1172	89	1261	4692	227	4919	6180
3 March, 1996	1136	89	1225	4713	237	4950	6175
10 March, 1996	1162	85	1247	4722	233	4955	6202
17 March, 1996	1171	87	1258	4706	243	4949	6207
24 March, 1996	1168	86	1254	4709	239	4948	6202
31 March, 1996	1203	95	1298	4704	234	4938	6236
7 April, 1996	1189	92	1281	4694	236	4930	6211
14 April, 1996	1192	94	1286	4707	243	4950	6236
21 April, 1996	1177	88	1265	4733	249	4982	6247
28 April, 1996	1214	96	1310	4743	242	4985	6295
5 May, 1996	1217	98	1315	4705	238	4943	6258
12 May, 1996	1196	102	1298	4729	244	4973	6271
19 May, 1996	1209	106	1315	4736	241	4977	6292
26 May, 1996	1219	98	1317	4738	245	4983	6300
2 June, 1996	1222	93	1315	4738	247	4985	6300
9 June, 1996	1224	94	1318	4732	246	4978	6296
16 June, 1996	1204	93	1297	4736	234	4970	6267
23 June, 1996	1216	99	1315	4718	237	4955	6270
30 June, 1996	1183	95	1278	4742	241	4983	6261

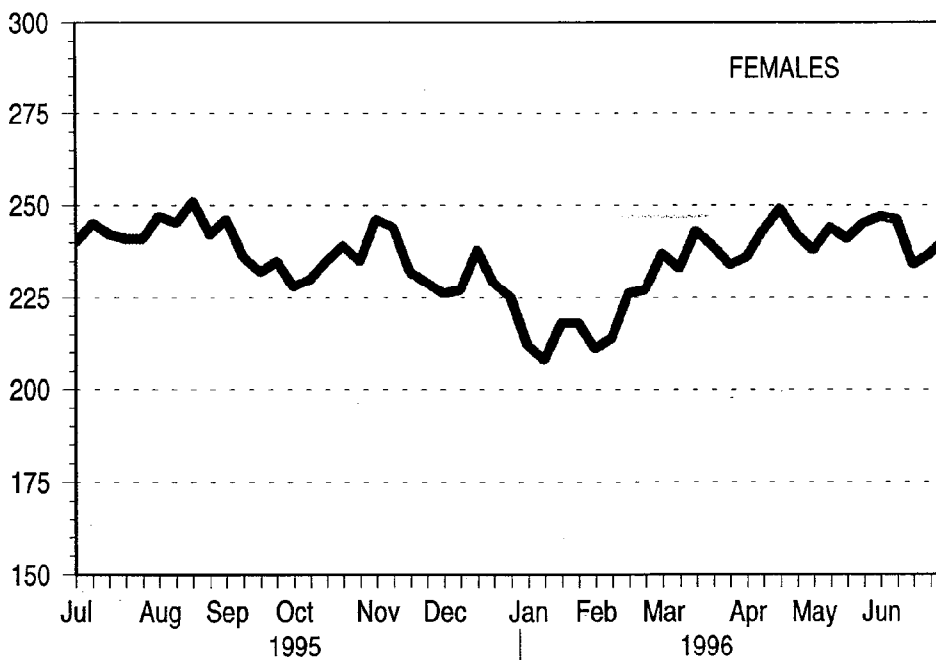
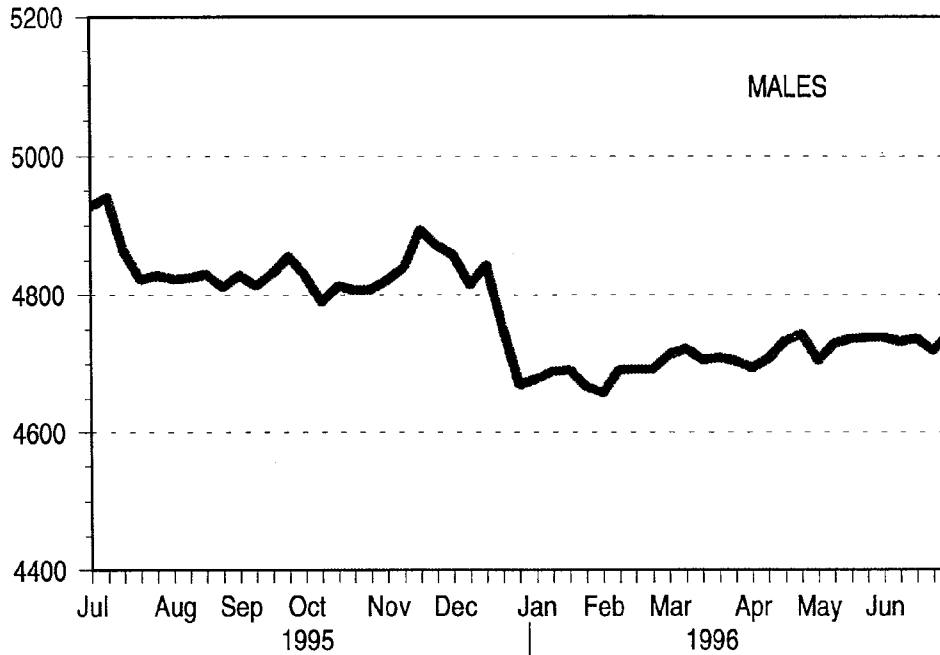
\*"Unsentenced" includes remands, trials, appellants and deportees

†"Sentenced" includes sentenced to term imprisonment, life sentence, forensic patient and fine defaulters



# Number of Sentenced Inmates in Full-time Custody

("Sentenced" includes: Fine Defaulters, Lifes, and Forensic Patients)

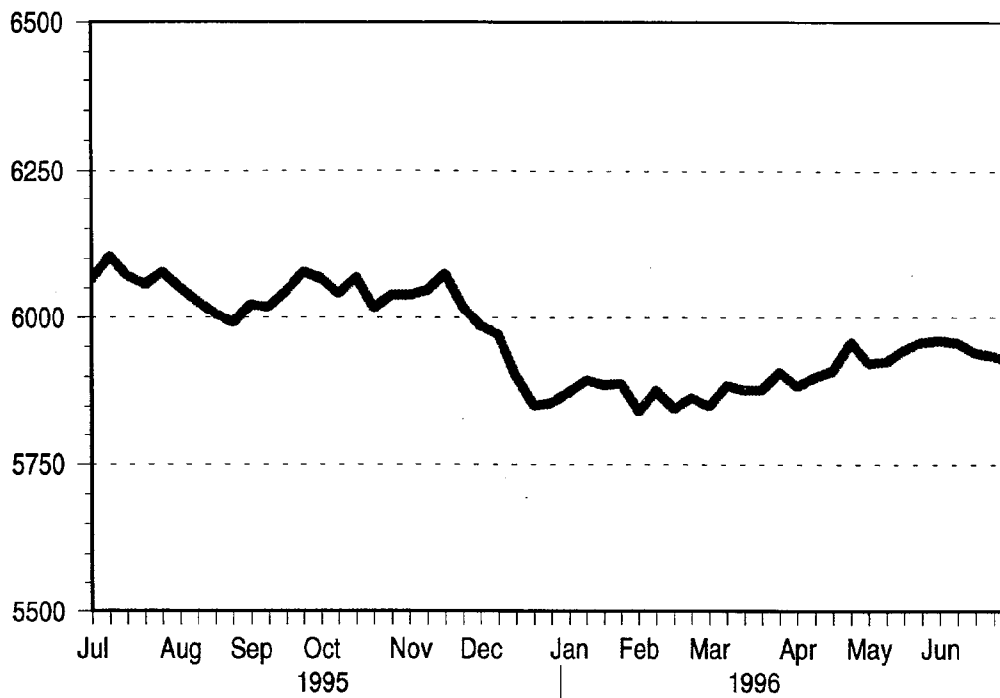


Research & Statistics, NSW Department of Corrective Services

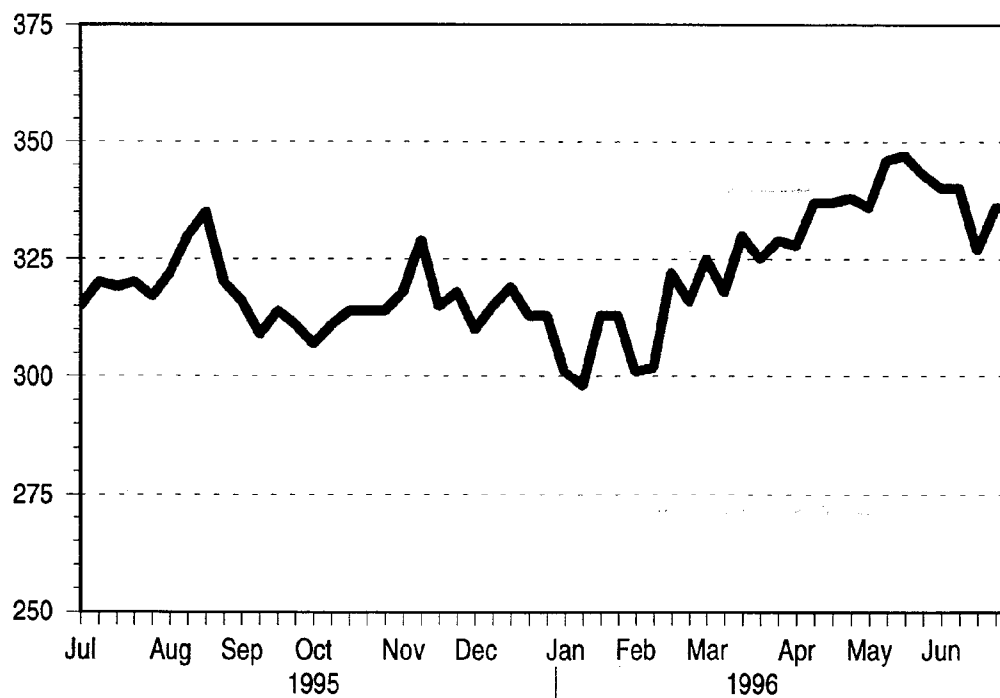
**Weekly States July 1995 - June 1996**  
**Sex of Inmates in Full-time Custody**

Date	Males Inmates	Females Inmates	Total Inmates	Date	Males Inmates	Females Inmates	Total Inmates
2 July, 1995	6065	315	6380	7 January, 1996	5874	301	6175
9 July, 1995	6104	320	6424	14 January, 1996	5894	298	6192
16 July, 1995	6071	319	6390	21 January, 1996	5886	313	6199
23 July, 1995	6056	320	6376	28 January, 1996	5888	313	6201
30 July, 1995	6077	317	6394	4 February, 1996	5841	301	6142
6 August, 1995	6050	322	6372	11 February, 1996	5876	302	6178
13 August, 1995	6027	330	6357	18 February, 1996	5846	322	6168
20 August, 1995	6006	335	6341	25 February, 1996	5864	316	6180
27 August, 1995	5991	320	6311	3 March, 1996	5850	325	6175
3 September, 1995	6022	316	6338	10 March, 1996	5884	318	6202
10 September, 1995	6018	309	6327	17 March, 1996	5877	330	6207
17 September, 1995	6044	314	6358	24 March, 1996	5877	325	6202
24 September, 1995	6077	311	6388	31 March, 1996	5907	329	6236
1 October, 1995	6066	307	6373	7 April, 1996	5883	328	6211
8 October, 1995	6040	311	6351	14 April, 1996	5899	337	6236
15 October, 1995	6068	314	6382	21 April, 1996	5910	337	6247
22 October, 1995	6017	314	6331	28 April, 1996	5957	338	6295
29 October, 1995	6038	314	6352	5 May, 1996	5922	336	6258
5 November, 1995	6038	318	6356	12 May, 1996	5925	346	6271
12 November, 1995	6046	329	6375	19 May, 1996	5945	347	6292
19 November, 1995	6074	315	6389	26 May, 1996	5957	343	6300
26 November, 1995	6018	318	6336	2 June, 1996	5960	340	6300
3 December, 1995	5986	310	6296	9 June, 1996	5956	340	6296
10 December, 1995	5971	315	6286	16 June, 1996	5940	327	6267
17 December, 1995	5902	319	6221	23 June, 1996	5934	336	6270
24 December, 1995	5851	313	6164	30 June, 1996	5925	336	6261
31 December, 1995	5856	313	6169				

## Number of Males in Full-time Custody



## Number of Females in Full-time Custody



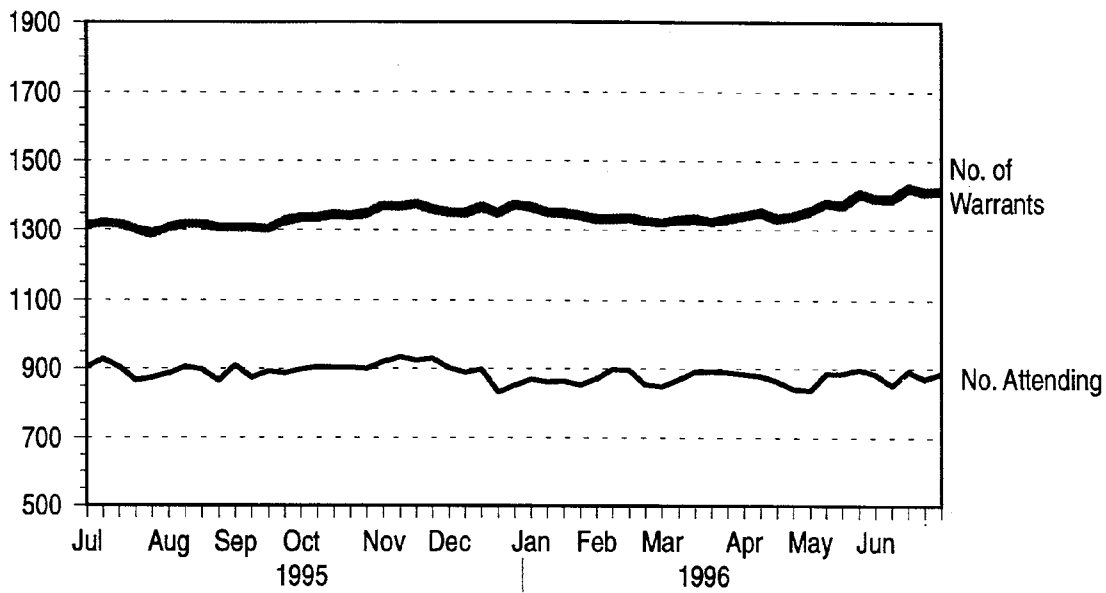
Research & Statistics, NSW Department of Corrective Services.

**Weekly States July 1995 - June 1996**  
**Periodic Detainees**

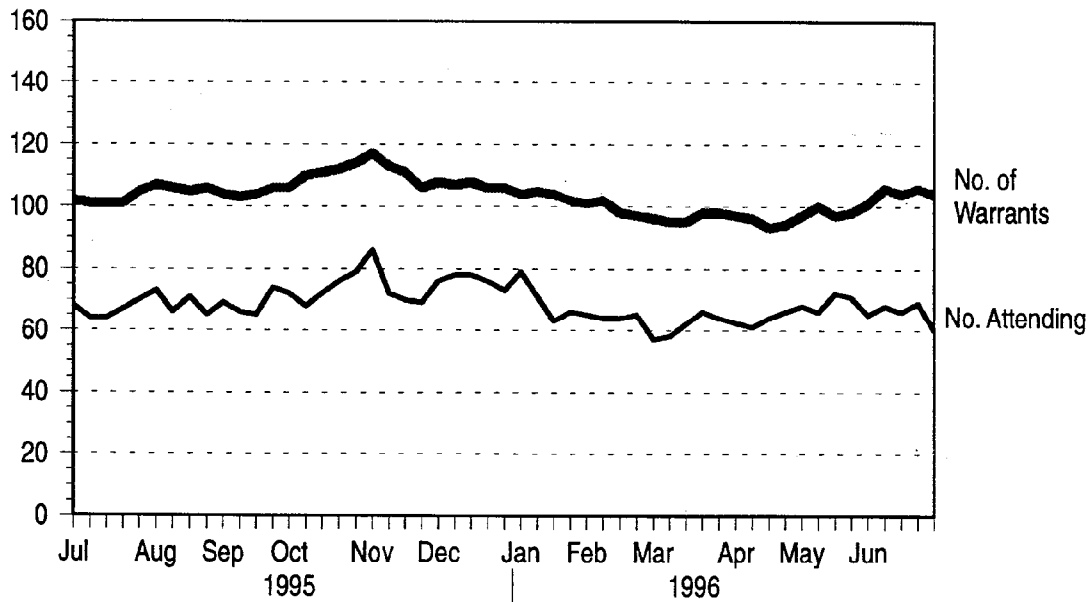
Date	No. Of Warrants		No. Attending		Date	No. Of Warrants		No. Attending	
	M	F	M	F		M	F	M	F
2 July, 1995	1315	102	904	68	7 January, 1996	1369	104	868	79
9 July, 1995	1321	101	927	64	14 January, 1996	1353	105	861	71
16 July, 1995	1317	101	904	64	21 January, 1996	1352	104	863	63
23 July, 1995	1303	101	866	67	28 January, 1996	1344	102	853	66
30 July, 1995	1289	105	873	70	4 February, 1996	1334	101	871	65
6 August, 1995	1308	107	885	73	11 February, 1996	1334	102	897	64
13 August, 1995	1317	106	904	66	18 February, 1996	1338	98	896	64
20 August, 1995	1317	105	898	71	25 February, 1996	1328	97	854	65
27 August, 1995	1308	106	865	65	3 March, 1996	1323	96	849	57
3 September, 1995	1307	104	909	69	10 March, 1996	1331	95	869	58
10 September, 1995	1307	103	873	66	17 March, 1996	1334	95	890	62
17 September, 1995	1304	104	892	65	24 March, 1996	1324	98	892	66
24 September, 1995	1327	106	887	74	31 March, 1996	1334	98	889	64
1 October, 1995	1338	106	897	72	7 April, 1996	#	#	#	#
8 October, 1995	1338	110	904	68	14 April, 1996	1351	96	878	61
15 October, 1995	1346	111	902	72	21 April, 1996	1335	93	864	64
22 October, 1995	1343	112	902	76	28 April, 1996	1342	94	841	66
29 October, 1995	1349	114	899	79	5 May, 1996	1356	97	837	68
5 November, 1995	1371	117	920	86	12 May, 1996	1378	100	886	66
12 November, 1995	1370	113	932	72	19 May, 1996	1372	97	885	72
19 November, 1995	1377	111	924	70	26 May, 1996	1405	98	897	71
26 November, 1995	1362	106	930	69	2 June, 1996	1392	101	883	65
3 December, 1995	1354	108	900	76	9 June, 1996	1390	106	852	68
10 December, 1995	1351	107	888	78	16 June, 1996	1422	104	893	66
17 December, 1995	1368	108	897	78	23 June, 1996	1410	106	871	69
24 December, 1995	1351	106	831	76	30 June, 1996	1414	104	887	60
31 December, 1995	1375	106	852	73					

# Periodic Detention Centres closed over Easter.

## Male Periodic Detainees



## Female Periodic Detainees



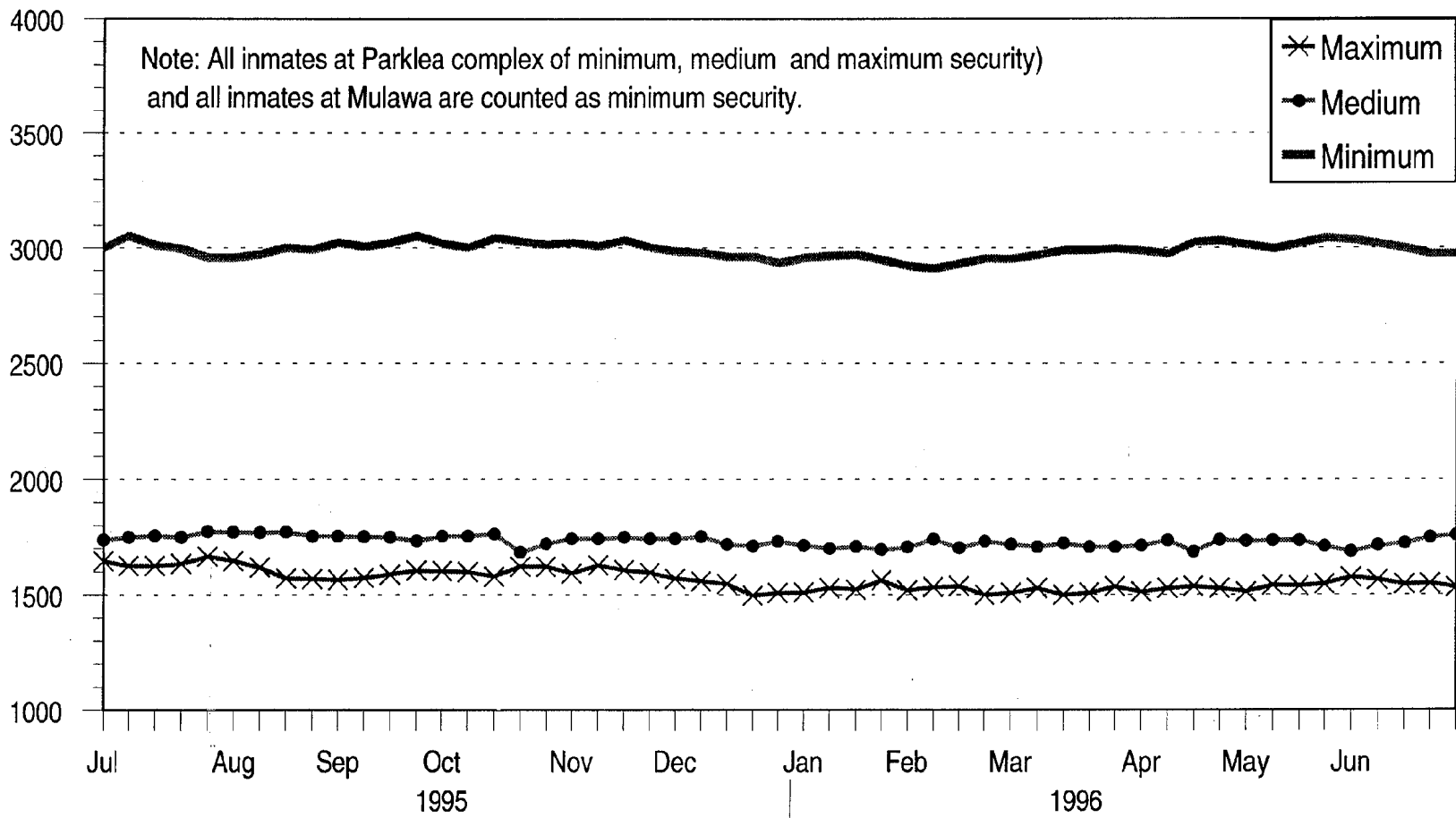
NB: Periodic Detention Centres were closed for Easter

Research & Statistics, NSW Department of Corrective Services

**Weekly States July 1995 - June 1996**  
**Classification of Institution in Which Inmates are Held**

Date	Security			Total	Date	Security			Total
	Max	Med	Min			Max	Med	Min	
2 July, 1995	1644	1737	2999	6380	7 January, 1996	1510	1711	2954	6175
9 July, 1995	1625	1748	3051	6424	14 January, 1996	1529	1699	2964	6192
16 July, 1995	1624	1755	3011	6390	21 January, 1996	1522	1708	2969	6199
23 July, 1995	1633	1748	2995	6376	28 January, 1996	1562	1694	2945	6201
30 July, 1995	1665	1773	2956	6394	4 February, 1996	1519	1704	2919	6142
6 August, 1995	1646	1770	2956	6372	11 February, 1996	1532	1739	2907	6178
13 August, 1995	1618	1768	2971	6357	18 February, 1996	1536	1701	2931	6168
20 August, 1995	1571	1771	2999	6341	25 February, 1996	1499	1729	2952	6180
27 August, 1995	1568	1752	2991	6311	3 March, 1996	1507	1717	2951	6175
3 September, 1995	1564	1752	3022	6338	10 March, 1996	1528	1706	2968	6202
10 September, 1995	1573	1750	3004	6327	17 March, 1996	1498	1720	2989	6207
17 September, 1995	1587	1749	3022	6358	24 March, 1996	1507	1706	2989	6202
24 September, 1995	1604	1732	3052	6388	31 March, 1996	1534	1706	2996	6236
1 October, 1995	1602	1752	3019	6373	7 April, 1996	1512	1712	2987	6211
8 October, 1995	1598	1752	3001	6351	14 April, 1996	1528	1735	2973	6236
15 October, 1995	1578	1762	3042	6382	21 April, 1996	1536	1685	3026	6247
22 October, 1995	1621	1683	3027	6331	28 April, 1996	1527	1736	3032	6295
29 October, 1995	1621	1718	3013	6352	5 May, 1996	1513	1731	3014	6258
5 November, 1995	1592	1741	3023	6356	12 May, 1996	1541	1734	2996	6271
12 November, 1995	1627	1742	3006	6375	19 May, 1996	1538	1734	3020	6292
19 November, 1995	1606	1749	3034	6389	26 May, 1996	1547	1709	3044	6300
26 November, 1995	1594	1742	3000	6336	2 June, 1996	1576	1688	3036	6300
3 December, 1995	1569	1742	2985	6296	9 June, 1996	1565	1713	3018	6296
10 December, 1995	1558	1750	2978	6286	16 June, 1996	1546	1724	2997	6267
17 December, 1995	1546	1716	2959	6221	23 June, 1996	1549	1749	2972	6270
24 December, 1995	1496	1709	2959	6164	30 June, 1996	1532	1757	2972	6261
31 December, 1995	1508	1729	2932	6157					

# Institutional Security Inmates in Full-time Custody



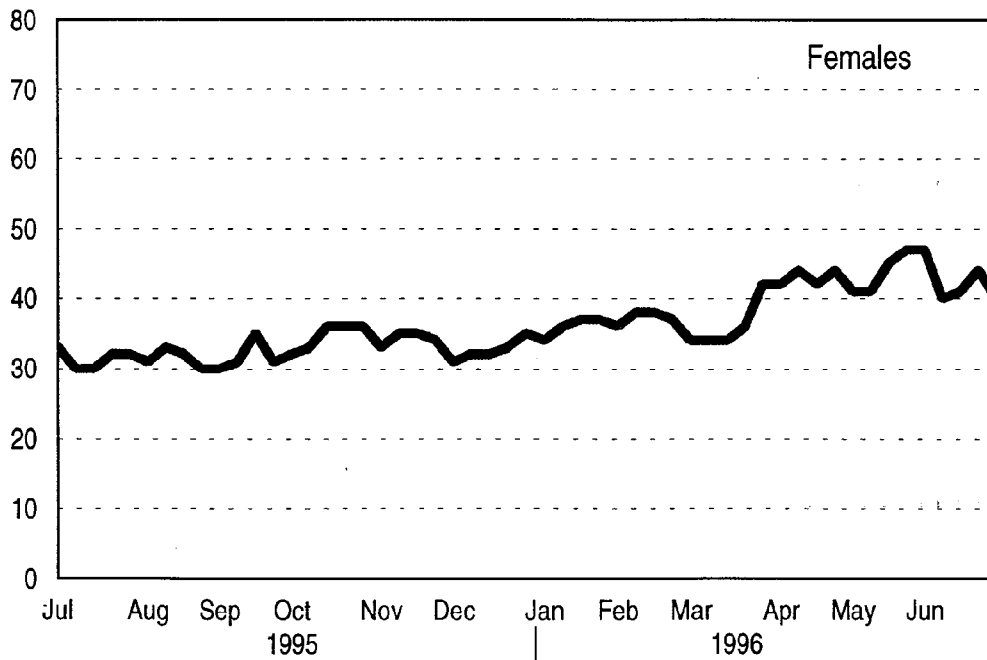
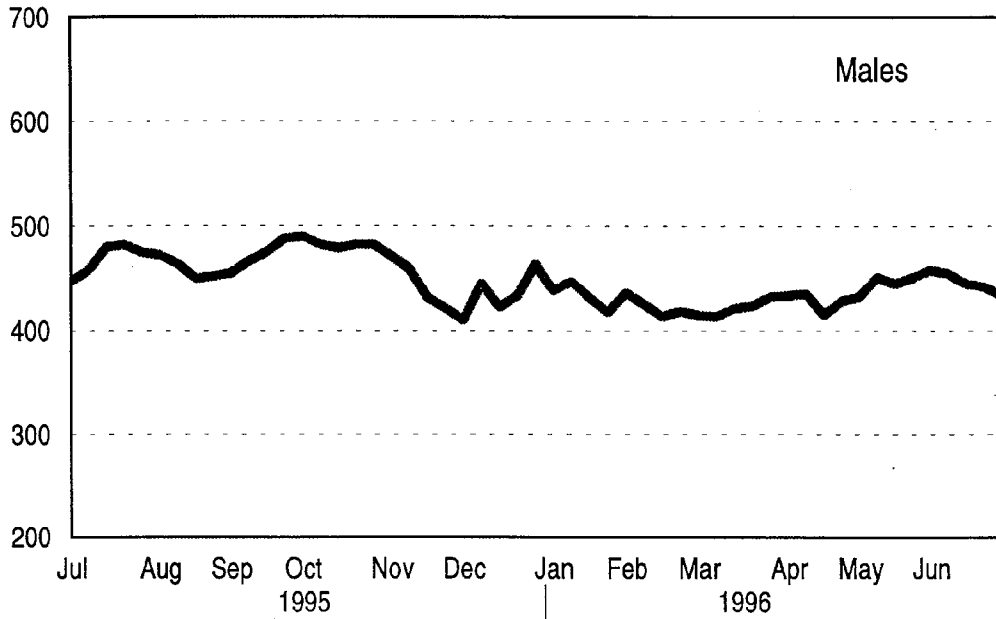
20

**Weekly States July 1995 - June 1996**  
**Number of Appellants in Full-time Custody**

Date	Males Appellants	Females Appellants	Total Appellants	Date	Male Appellants	Females Appellants	Total Appellants
2 July, 1995	447	33	480	7 January, 1996	438	34	472
9 July, 1995	458	30	488	14 January, 1996	447	36	483
16 July, 1995	480	30	510	21 January, 1996	431	37	468
23 July, 1995	482	32	514	28 January, 1996	417	37	454
30 July, 1995	475	32	507	4 February, 1996	436	36	472
6 August, 1995	472	31	503	11 February, 1996	425	38	463
13 August, 1995	464	33	497	18 February, 1996	413	38	451
20 August, 1995	450	32	482	25 February, 1996	418	37	455
27 August, 1995	452	30	482	3 March, 1996	414	34	448
3 September, 1995	455	30	485	10 March, 1996	413	34	447
10 September, 1995	466	31	497	17 March, 1996	421	34	455
17 September, 1995	475	35	510	24 March, 1996	423	36	459
24 September, 1995	488	31	519	31 March, 1996	432	42	474
1 October, 1995	490	32	522	7 April, 1996	433	42	475
8 October, 1995	482	33	515	14 April, 1996	435	44	479
15 October, 1995	479	36	515	21 April, 1996	415	42	457
22 October, 1995	482	36	518	28 April, 1996	428	41	469
29 October, 1995	482	36	518	5 May, 1996	432	41	473
5 November, 1995	471	33	504	12 May, 1996	451	41	492
12 November, 1995	459	35	494	19 May, 1996	445	45	490
19 November, 1995	431	35	466	26 May, 1996	451	47	498
26 November, 1995	421	34	455	2 June, 1996	458	47	505
3 December, 1995	410	31	441	9 June, 1996	455	40	495
10 December, 1995	445	32	477	16 June, 1996	445	41	486
17 December, 1995	422	32	454	23 June, 1996	442	44	486
24 December, 1995	433	33	466	30 June, 1996	433	40	473
31 December, 1995	464	35	499				



# Number of Appellants in Full-time Custody



Research & Statistics, NSW Department of Corrective Services

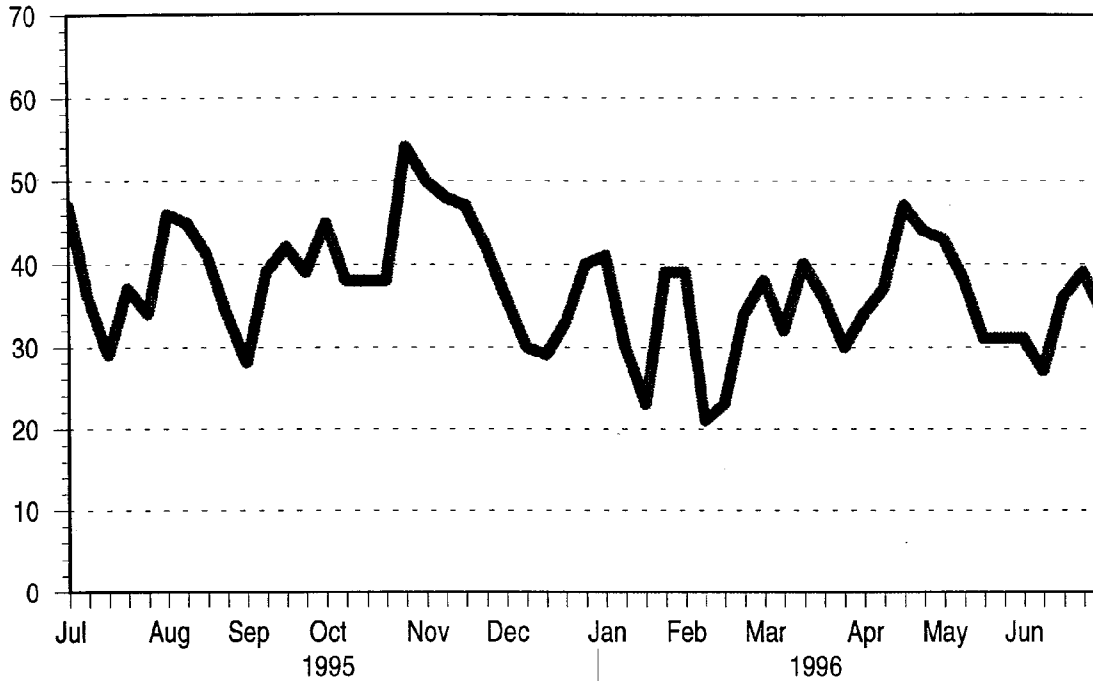
**Weekly States July 1995 - June 1996  
Segregation and Protection**

Date	Segregation			Protection			Date	Segregation			Protection		
	M	F	Total	M	F	Total		M	F	Total	M	F	Total
2 July, 1995	46	1	47	654	12	666	7 January, 1996	41	0	41	695	6	701
9 July, 1995	35	1	36	661	12	673	14 January, 1996	27	3	30	702	10	712
16 July, 1995	28	1	29	654	13	667	21 January, 1996	23	0	23	699	12	711
23 July, 1995	36	1	37	670	14	684	28 January, 1996	39	0	39	708	12	720
30 July, 1995	32	2	34	670	13	683	4 February, 1996	39	0	39	705	9	714
6 August, 1995	33	13	46	659	18	677	11 February, 1996	21	0	21	691	9	700
13 August, 1995	42	3	45	653	19	672	18 February, 1996	23	0	23	744	10	754
20 August, 1995	39	2	41	661	17	678	25 February, 1996	33	1	34	737	11	748
27 August, 1995	31	3	34	653	14	667	3 March, 1996	36	2	38	738	14	752
3 September, 1995	25	3	28	655	12	667	10 March, 1996	31	1	32	751	12	763
10 September, 1995	36	3	39	665	14	679	17 March, 1996	39	1	40	758	11	769
17 September, 1995	39	3	42	658	14	672	24 March, 1996	36	0	36	746	13	759
24 September, 1995	36	3	39	655	14	669	31 March, 1996	30	0	30	756	15	771
1 October, 1995	40	5	45	661	14	675	7 April, 1996	34	0	34	690	14	704
8 October, 1995	33	5	38	680	14	694	14 April, 1996	37	0	37	777	13	790
15 October, 1995	34	4	38	710	12	722	21 April, 1996	47	0	47	717	12	729
22 October, 1995	35	3	38	665	14	679	28 April, 1996	44	0	44	753	12	765
29 October, 1995	51	3	54	657	9	666	5 May, 1996	43	0	43	751	12	763
5 November, 1995	48	2	50	677	7	684	12 May, 1996	37	1	38	757	15	772
12 November, 1995	46	2	48	665	8	673	19 May, 1996	31	0	31	744	14	758
19 November, 1995	45	2	47	647	7	654	26 May, 1996	31	0	31	764	11	775
26 November, 1995	39	3	42	682	8	690	2 June, 1996	31	0	31	770	17	787
3 December, 1995	33	3	36	685	5	690	9 June, 1996	27	0	27	765	20	785
10 December, 1995	29	1	30	690	7	697	16 June, 1996	34	2	36	764	23	787
17 December, 1995	29	0	29	679	8	687	23 June, 1996	37	2	39	755	23	778
24 December, 1995	33	0	33	680	9	689	30 June, 1996	34	0	34	751	25	776
31 December, 1995	40	0	40	693	7	700							

**NB: On segregation: for good order and discipline. On protection: at inmate's own request.**

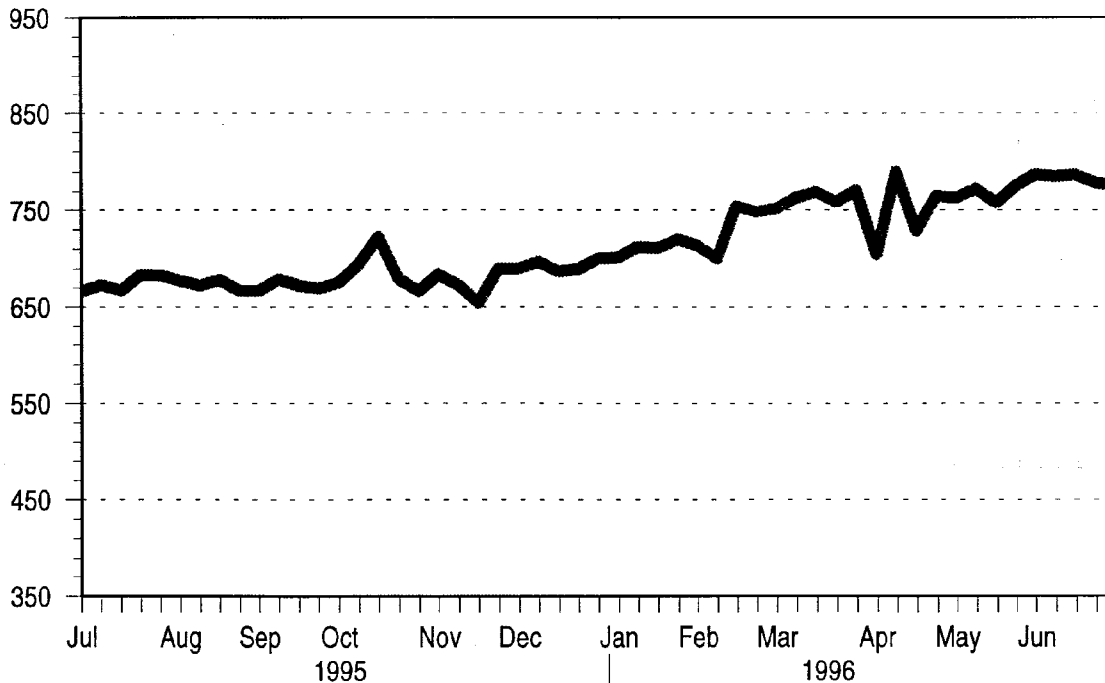
## Number of Inmates on Segregation

Segregation = For good order and discipline



## Number of Inmates on Protection

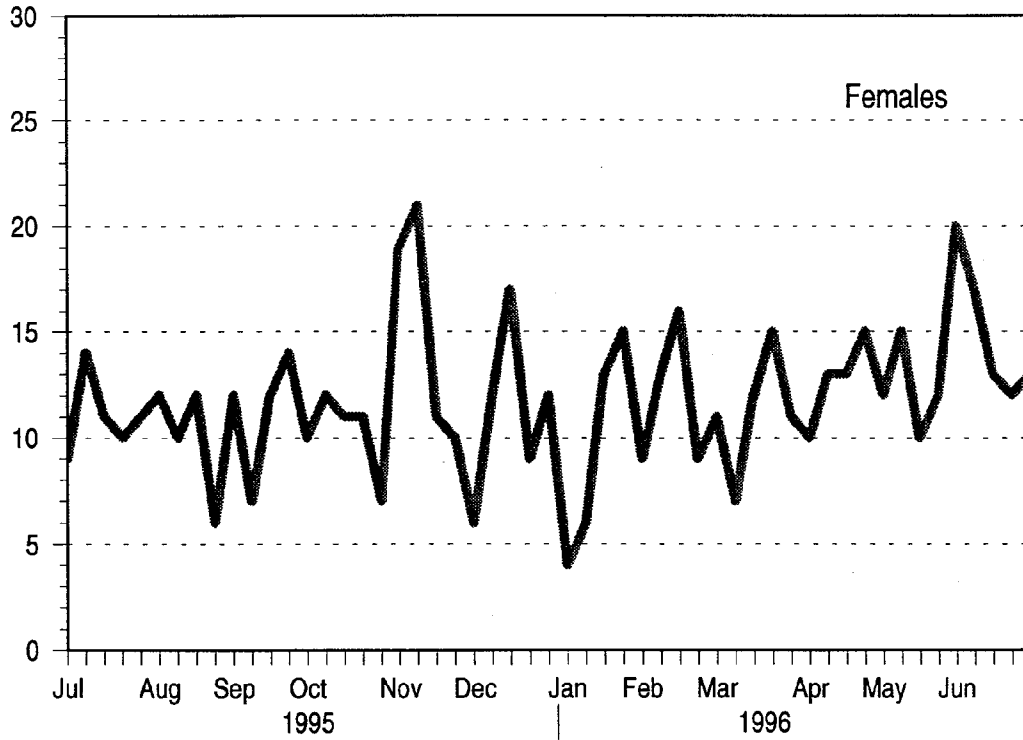
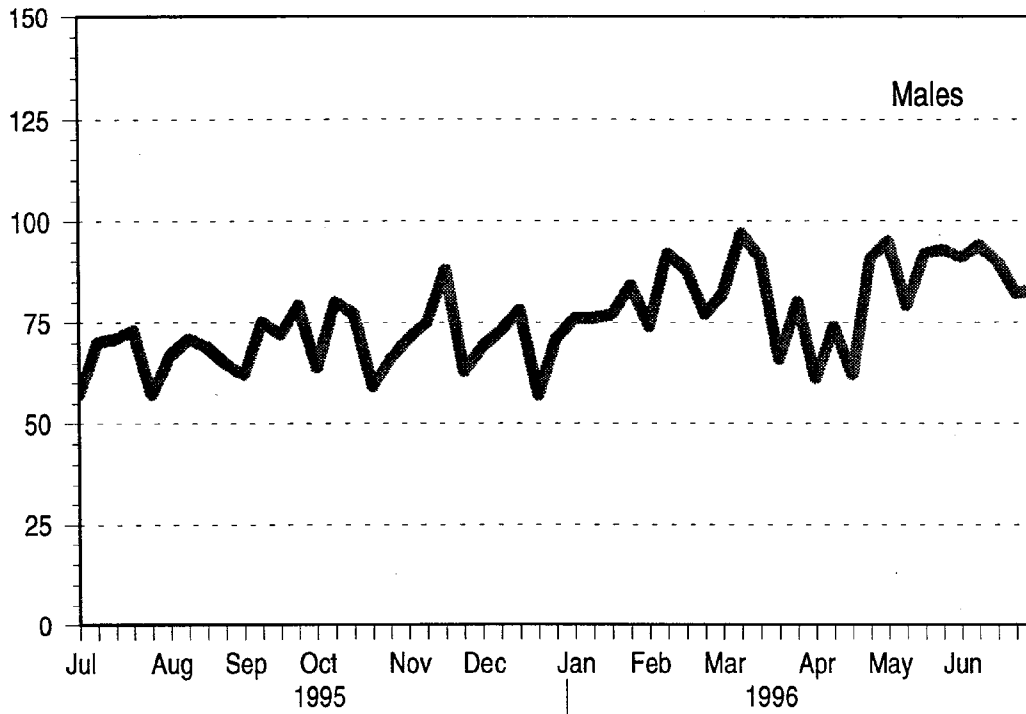
On protection = At Inmate's own request



**Weekly States July 1995 - June 1996**  
**Number of Fine Defaulters in Full-time Custody**

Date	Male Fine Defaulters	Female Fine Defaulters	Total Fine Defaulters	Date	Male Fine Defaulters	Female Fine Defaulters	Total Fine Defaulters
2 July, 1995	57	9	66	7 January, 1996	76	4	80
9 July, 1995	70	14	84	14 January, 1996	76	6	82
16 July, 1995	71	11	82	21 January, 1996	77	13	90
23 July, 1995	73	10	83	28 January, 1996	84	15	99
30 July, 1995	57	11	68	4 February, 1996	74	9	83
6 August, 1995	67	12	79	11 February, 1996	92	13	105
13 August, 1995	71	10	81	18 February, 1996	88	16	104
20 August, 1995	69	12	81	25 February, 1996	77	9	86
27 August, 1995	65	6	71	3 March, 1996	82	11	93
3 September, 1995	62	12	74	10 March, 1996	97	7	104
10 September, 1995	75	7	82	17 March, 1996	91	12	103
17 September, 1995	72	12	84	24 March, 1996	66	15	81
24 September, 1995	79	14	93	31 March, 1996	80	11	91
1 October, 1995	64	10	74	7 April, 1996	61	10	71
8 October, 1995	80	12	92	14 April, 1996	74	13	87
15 October, 1995	77	11	88	21 April, 1996	62	13	75
22 October, 1995	59	11	70	28 April, 1996	91	15	106
29 October, 1995	66	7	73	5 May, 1996	95	12	107
5 November, 1995	71	19	90	12 May, 1996	79	15	94
12 November, 1995	75	21	96	19 May, 1996	92	10	102
19 November, 1995	88	11	99	26 May, 1996	93	12	105
26 November, 1995	63	10	73	2 June, 1996	91	20	111
3 December, 1995	69	6	75	9 June, 1996	94	17	111
10 December, 1995	73	12	85	16 June, 1996	90	13	103
17 December, 1995	78	17	95	23 June, 1996	82	12	94
24 December, 1995	57	9	66	30 June, 1996	83	13	96
31 December, 1995	71	12	83				

# Number of Fine Defaulters

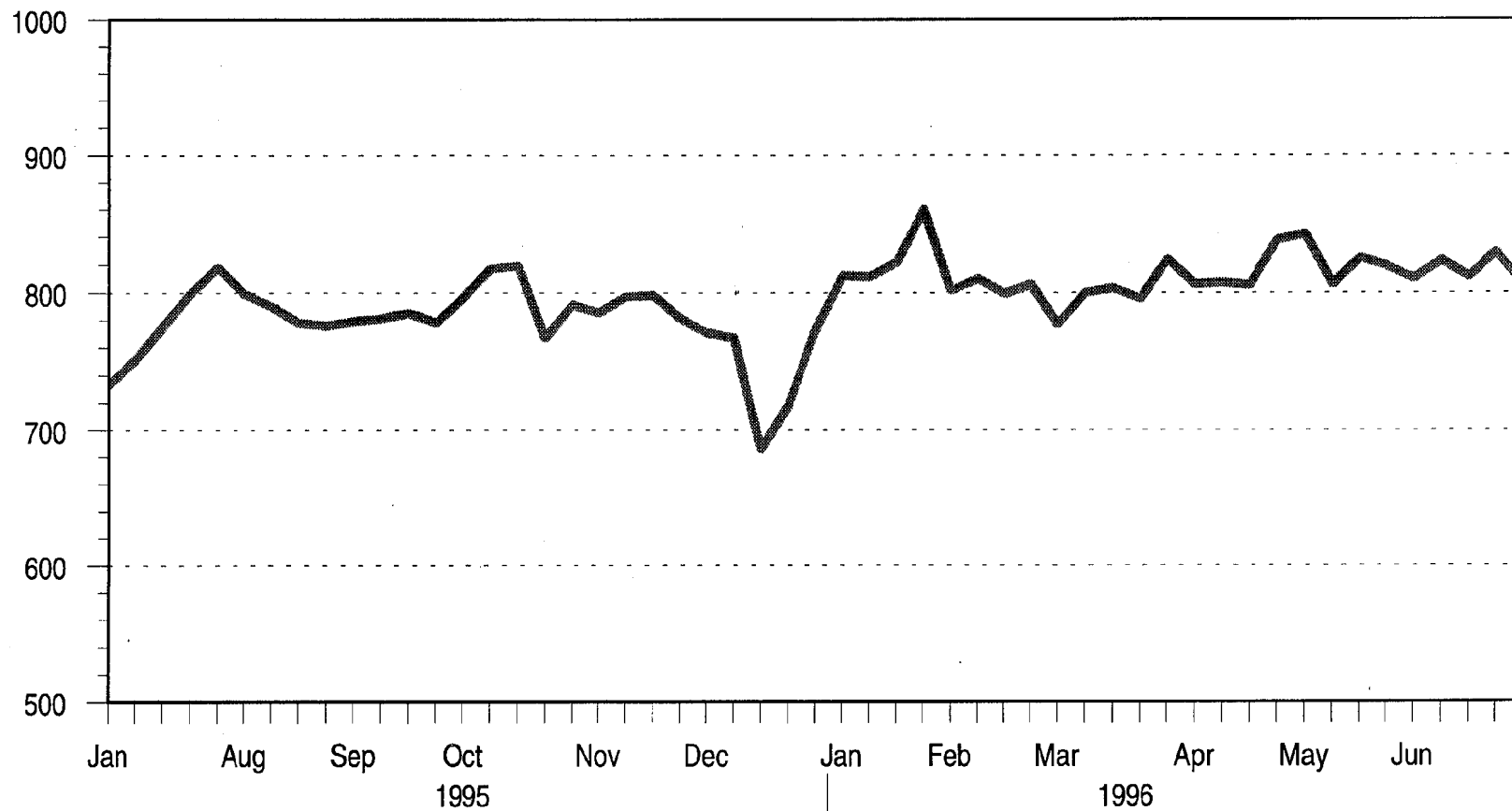


Research & Statistics, NSW Department of Corrective Services

**Weekly States July 1995 - June 1996**  
**Number of Unsented Inmates Less Appellants**

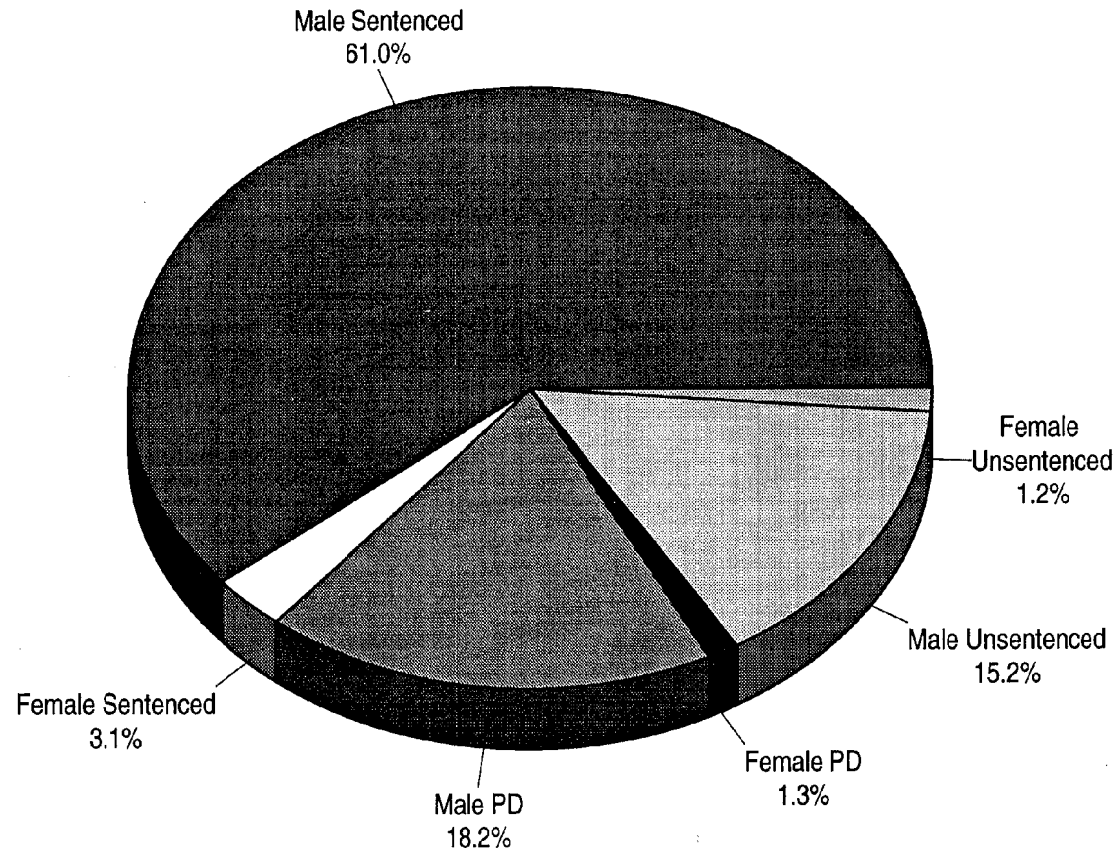
Date	Unsented	Appellants	Unsented less Appellants	Date	Unsented	Appellants	Unsented Less Appellants
2 July, 1995	1213	480	733	7 January, 1996	1284	472	812
9 July, 1995	1239	488	751	14 January, 1996	1294	483	811
16 July, 1995	1285	510	775	21 January, 1996	1290	468	822
23 July, 1995	1313	514	799	28 January, 1996	1314	454	860
30 July, 1995	1325	507	818	4 February, 1996	1273	472	801
6 August, 1995	1302	503	799	11 February, 1996	1273	463	810
13 August, 1995	1287	497	790	18 February, 1996	1250	451	799
20 August, 1995	1260	482	778	25 February, 1996	1261	455	806
27 August, 1995	1258	482	776	3 March, 1996	1225	448	777
3 September, 1995	1264	485	779	10 March, 1996	1247	447	800
10 September, 1995	1278	497	781	17 March, 1996	1258	455	803
17 September, 1995	1295	510	785	24 March, 1996	1254	459	795
24 September, 1995	1297	519	778	31 March, 1996	1298	474	824
1 October, 1995	1318	522	796	7 April, 1996	1281	475	806
8 October, 1995	1332	515	817	14 April, 1996	1286	479	807
15 October, 1995	1334	515	819	21 April, 1996	1262	457	805
22 October, 1995	1285	518	767	28 April, 1996	1310	472	838
29 October, 1995	1309	518	791	5 May, 1996	1315	473	842
5 November, 1995	1289	504	785	12 May, 1996	1298	492	806
12 November, 1995	1291	494	797	19 May, 1996	1315	490	825
19 November, 1995	1264	466	798	26 May, 1996	1317	498	819
26 November, 1995	1236	455	781	2 June, 1996	1315	505	810
3 December, 1995	1212	441	771	9 June, 1996	1318	495	823
10 December, 1995	1244	477	767	16 June, 1996	1297	486	811
17 December, 1995	1140	454	686	23 June, 1996	1315	486	829
24 December, 1995	1184	466	718	30 June, 1996	1278	473	805
31 December, 1995	1272	499	773				

# Remand, Trial and Deportee Inmates (Unsentenced Inmates less Appellants)



Research & Statistics, NSW Department of Corrective Services.

# Profile on last Sunday of June 1996



29

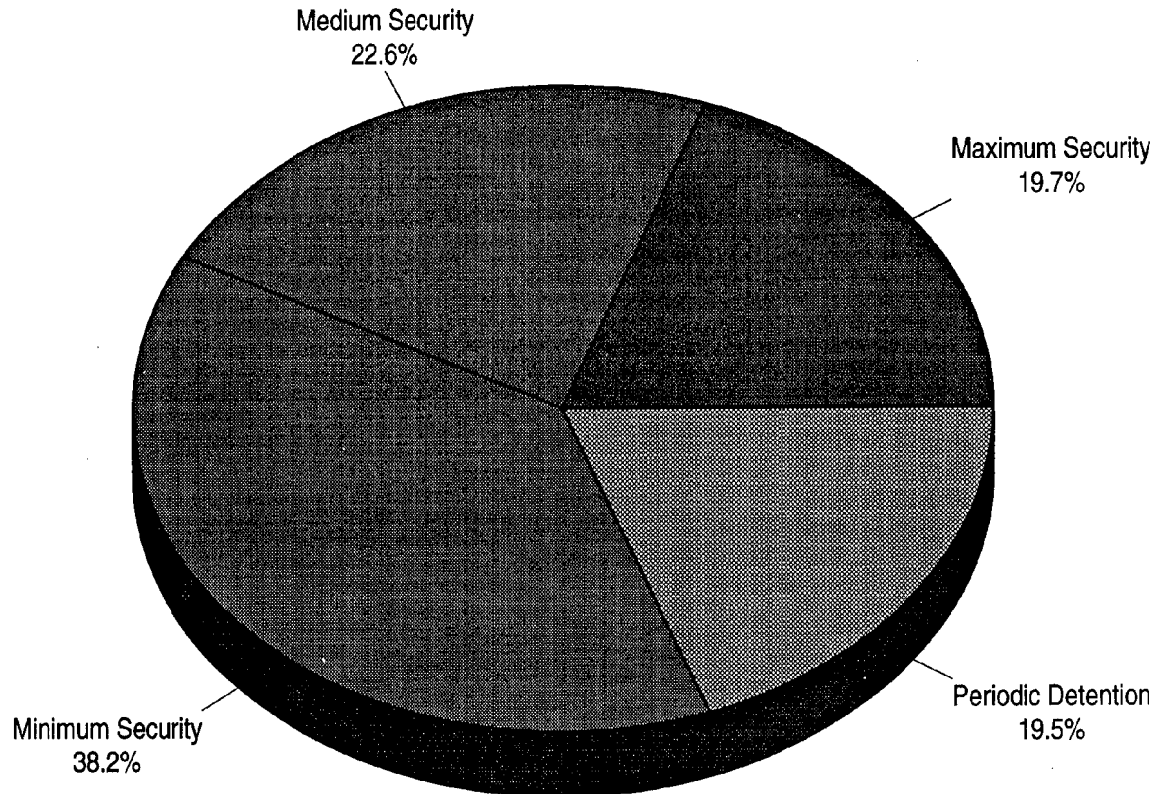
P.D. = Periodic Detention

Research & Statistics, NSW Department of Corrective Services



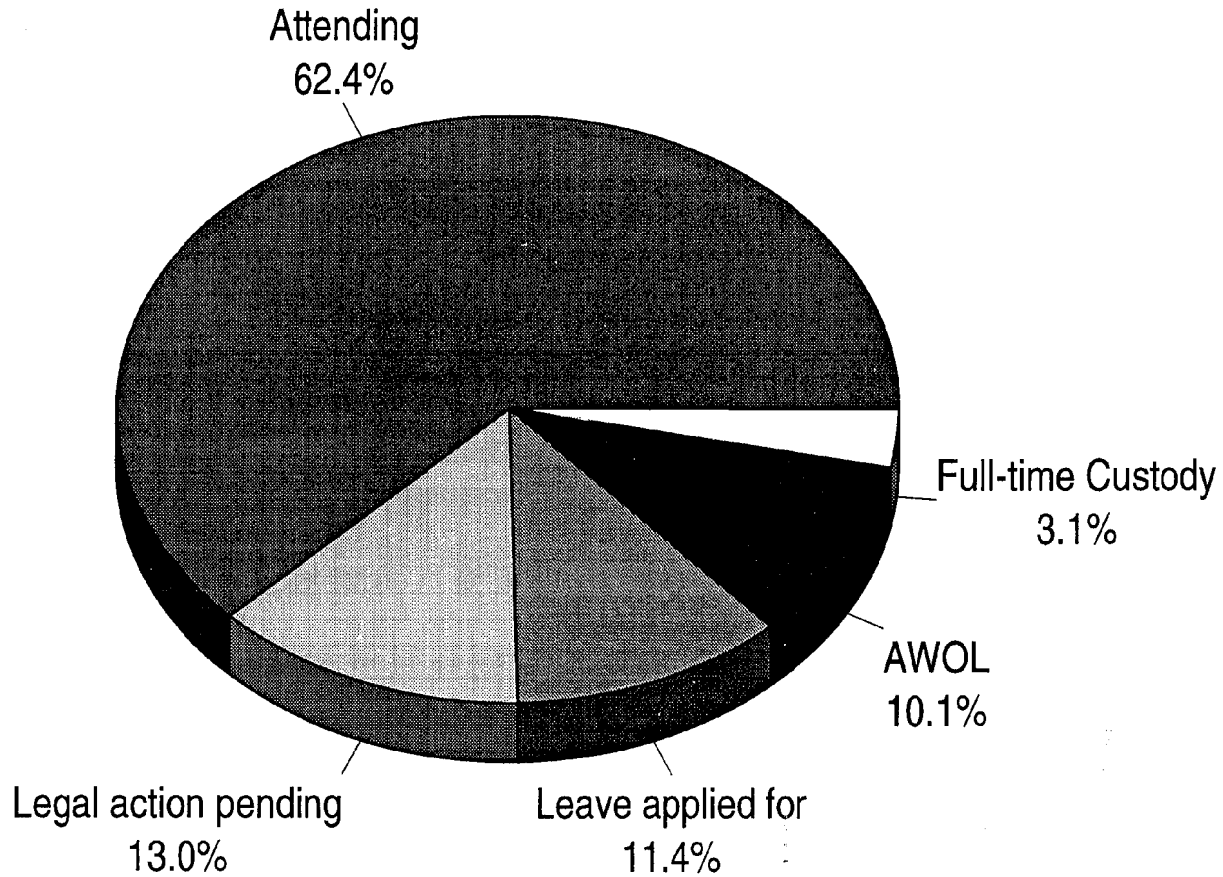
# Institutional Security

## Percentage on last Sunday of June 1996



Research & Statistics, NSW Department of Corrective Services

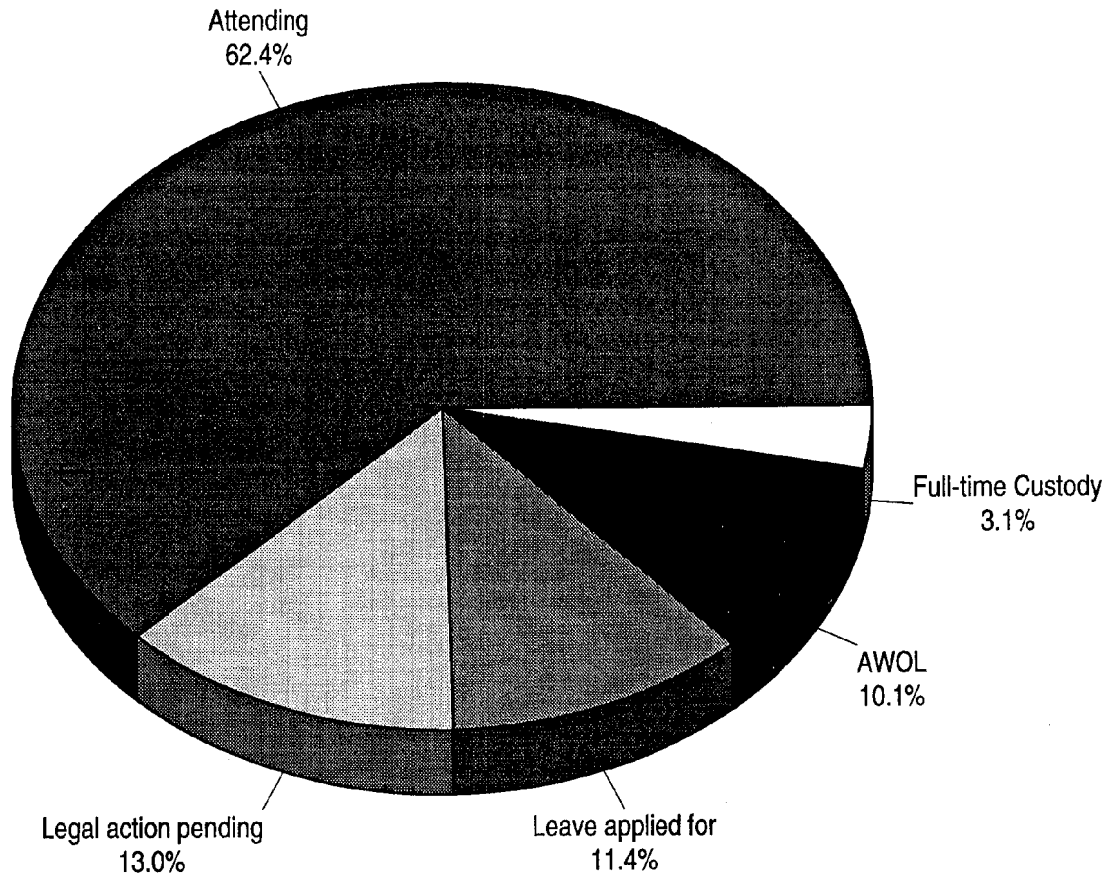
# Periodic Detainees Attendance and Reasons for Non-attendance on last Sunday of June 1996



Research & Statistics, NSW Department of Corrective Services

# Periodic Detainees

## Attendance and Reasons for Non-attendance on last Sunday of June 1996



Research & Statistics, NSW Department of Correcticve Services

WEEKLY STATES AT MIDNIGHT ON: 2ND JULY, 1995

FULL-TIME INMATES		INMATES				*Accommodation in				Beds +/- **	Segregation		Protection		
		Males		Females		Total	Single Cells	Multi Cells	Dorm		Total Beds	M	F	M	F
		U/S	S	U/S	S										
	Goulburn (Main)	48	326	-	-	374	314	55	-	369	-5	17	-	40	-
	Maitland	61	146	-	-	207	51	76	-	127	-80	7	-	58	-
	Long Bay Complex														
M	- Special Purpose Centre	10	44	-	3	57	60	-	-	60	3	-	-	-	-
A	- L. B. Hospital - Med.	8	18	-	-	26	16	12	-	28	2	-	-	-	-
X	- L. B. Hospital - Psych.	26	59	-	-	85	84	-	-	84	-1	-	-	-	-
I	- Prince Henry Annexe	-	1	-	-	1	-	-	7	7	6	-	-	-	-
M	- Reception & Induction	61	169	-	-	230	410	2	-	412	182	-	-	86	-
U	- Special Care C. C.														
M	- Special Care Unit	2	17	-	-	19	27	-	-	27	8	-	-	-	-
	- Crisis Support Unit	7	3	2	-	12	-	18	-	18	6	-	-	-	-
	- Lifestyles Unit	1	7	-	-	8	-	8	-	8	0	-	-	-	-
	- Remand Centre	321	26	-	-	347	216	2	8	226	-121	11	-	56	-
	Lithgow	42	236	-	-	278	298	-	-	298	20	1	-	37	-
	<b>Sub-total</b>	<b>587</b>	<b>1052</b>	<b>2</b>	<b>3</b>	<b>1644</b>	<b>1476</b>	<b>173</b>	<b>15</b>	<b>1664</b>	<b>20</b>	<b>36</b>	<b>0</b>	<b>277</b>	<b>0</b>
M	Bathurst (Main)	37	184	-	-	221	220	4	-	224	3	1	-	14	-
E	Broken Hill	3	38	-	1	42	14	14	-	28	-14	-	-	-	-
D	Cooma	18	143	-	-	161	112	-	8	120	-41	-	-	-	-
I	Grafton (Main)	46	78	-	3	127	42	-	12	54	-73	-	-	1	-
U	Mulawa	-	-	61	124	185	162	52	8	222	37	-	1	-	12
M	Parramatta	163	259	-	-	422	292	-	-	292	-130	2	-	-	-
	Parklea N.W.R.	77	188	-	-	283	405	-	-	405	122	2	-	-	-
	- Work Release	-	18	-	-										
	Junee (Medium)	33	211	-	-	244	368	16	-	384	140	1	-	157	-
	Tamworth	17	35	-	-	52	-	66	-	66	14	-	-	-	-
	<b>Sub-total</b>	<b>394</b>	<b>1154</b>	<b>61</b>	<b>128</b>	<b>1737</b>	<b>1615</b>	<b>152</b>	<b>28</b>	<b>1795</b>	<b>58</b>	<b>6</b>	<b>1</b>	<b>172</b>	<b>12</b>
M	Berrima	4	59	-	-	63	57	4	-	61	-2	-	-	-	-
	Emu Plains N.W.R.	-	-	8	52	61	116	2	-	118	57	-	-	-	-
	- Work Release	-	-	-	1										
	Norma Parker N.W.R.	-	-	4	42	60	16	46	28	90	30	-	-	-	-
	- Work Release	-	-	-	14										
M	Silverwater N.W.R.	13	240	-	-	388	45	408	-	453	65	-	-	-	-
I	- Work Release	2	133	-	-										
N	Goulburn (X-Wing)	5	96	-	-	101	90	-	-	90	-11	-	-	-	-
I	Bathurst (X-Wing)	6	87	-	-	93	89	-	-	89	-4	-	-	-	-
M	Grafton (C-Unit)	10	110	-	-	120	96	-	-	96	-24	-	-	-	-
U	Industrial Training Centre	20	358	-	-	378	236	37	-	273	-105	-	-	-	-
M	St Heliers	-	228	-	-	228	184	-	5	189	-39	-	-	-	-
	Glen Innes	-	122	-	-	122	154	-	-	154	32	-	-	-	-
	Mannus	3	121	-	-	124	81	48	12	141	17	-	-	-	-
	Oberon	8	87	-	-	95	80	-	-	80	-15	-	-	-	-
	Kirkconnell	8	190	-	-	198	70	60	-	130	-68	-	-	-	-
	Junee (Minimum)	23	309	-	-	332	228	-	-	228	-104	1	-	202	-
	John Morony	18	207	-	-	225	232	18	-	250	25	2	-	-	-
	Cessnock	37	374	-	-	411	407	50	-	457	46	1	-	3	-
	<b>Sub-total</b>	<b>157</b>	<b>2721</b>	<b>12</b>	<b>109</b>	<b>2999</b>	<b>2181</b>	<b>673</b>	<b>45</b>	<b>2899</b>	<b>-100</b>	<b>4</b>	<b>0</b>	<b>205</b>	<b>0</b>
	<b>TOTAL FULL-TIME</b>	<b>1138</b>	<b>4927</b>	<b>75</b>	<b>240</b>	<b>6380</b>	<b>5272</b>	<b>998</b>	<b>88</b>	<b>6358</b>	<b>-22</b>	<b>46</b>	<b>1</b>	<b>654</b>	<b>12</b>

\* Design accommodation in uncrowded conditions - amended 24th March, 1995.

N.W.R.=Non Work Release

\*\*Difference between number of beds in uncrowded conditions and number of inmates.

S=Sentenced inmates (not including appellants) U/S=Unsentenced inmates (including appellants, trials, remandees and deportees)

Included in the above figures are:

Number of fine defaulters (in gaol for no other reason)	57 M +	9 F =	66	(including 0 at Junee)
Number of inmates on appeal	447 M +	33 F =	480	(including 56 at Junee)
Number of inmates on remand or for trial	687 M +	42 F =	729	(including 0 at Junee)
Number of juveniles under 18 years	0 M +	0 F =	0	(including 0 at Junee)
Total full-time inmates =	5804 (at DOCS institutions)	+	576 (at Junee)	= 6380

\*\*\*\*\* Research & Statistics \*\*\*\*\*

**WEEKLY STATES FOR THE WEEK ENDING: 2ND JULY, 1995**

**PERIODIC**

**DETAINEES (P.D.'S)**

	People with warrants			Attending			No.*	Beds*
	Stage1	Stage2	Total	Stage1	Stage2	Total	Beds	+/-
Campbelltown	89	17	106	45	17	62	52	7
Grafton	32	26	58	21	24	45	50	29
Malabar	119	43	162	71	43	114	164	93
Malabar Mid-week	44	33	77	30	30	60	164	134
Parramatta	62	10	72	42	9	51	52	10
St Heliers	24	5	29	19	5	24	25	6
Silverwater	151	60	211	80	58	138	110	30
Silverwater Mid-week	121	45	166	66	43	109	110	44
Tomago	104	64	168	62	64	126	96	34
Windsor	94	28	122	60	27	87	60	0
Administration**	12	0	12	0	0	0	0	0
Administration Midweek	2	1	3	0	1	1	0	0
Wollongong	76	26	102	45	25	70	82	37
Mannus	21	6	27	11	6	17	24	13
<b>Total Males</b>	<b>951</b>	<b>364</b>	<b>1315</b>	<b>552</b>	<b>352</b>	<b>904</b>	<b>989</b>	<b>437</b>

Emu Plains	61	37	98	36	30	66	40	4
Administration**	2	0	2	0	0	0	0	0
Mannus	1	1	2	1	1	2	6	5
<b>Total Females</b>	<b>64</b>	<b>38</b>	<b>102</b>	<b>37</b>	<b>31</b>	<b>68</b>	<b>46</b>	<b>9</b>

<b>TOTAL P.D.'S</b>	<b>1015</b>	<b>402</b>	<b>1417</b>	<b>589</b>	<b>383</b>	<b>972</b>	<b>1035</b>	<b>446</b>
---------------------	-------------	------------	-------------	------------	------------	------------	-------------	------------

\* Number of free beds calculated on the numbers attending in Stage 1 and assuming uncrowded conditions.

Amended 26th March, 1995.

\*\* Administration Stage 1 comprises detainees who have failed to attend for more than 8 consecutive weeks.

Number of fine defaulters attending periodic detention = 1.

**The total number of people with warrants comprises:**

Number attending		904	68	972
Number in full-time custody	sentenced-one month or less	1 M +	0 F =	1
	sentenced-more than one month	8 M +	1 F =	9
	remand	21 M +	0 F =	21
Number on appeal with bail		1 M +	0 F =	1
Number absent - leave applied for	- sick	91 M +	12 F =	103
	- other	29 M +	2 F =	31
Total absent - reasons known		151 M +	15 F =	166
Number absent without leave	- no reason given	125 M +	14 F =	139
	- legal action pending	133 M +	5 F =	138
	- appealing Sec 25 cancellation	2 M +	0 F =	2
Total absent without leave		260 M +	19 F =	279
Total number of people with warrants		1315 M +	102 F =	1417

**WEEKLY STATES FOR THE WEEK ENDING:**

**2ND JULY, 1995**

	Full-time Inmates		All Inmates Full-time + PD	
	No.	Date	No.	Date
Highest weekly state, year ending previous week	6432*	3/7/94	7824	18/6/95
Lowest weekly state, year ending previous week	6110	29/1/95	7464	29/1/95
State for previous week (amended figure*)	6407	25/6/95	7816*	25/6/95
State for this week	6380	2/7/95	7797	2/7/95

\*\*\*\*\* Research & Statistics \*\*\*\*\*

**WEEKLY STATES AT MIDNIGHT ON: 6TH AUGUST, 1995**

FULL-TIME INMATES		INMATES				*Accommodation in				Beds +/- **	Segregation		Protection		
		Males		Females		Total	Single Cells	Multi Cells	Dorm		Total Beds	M	F	M	F
		U/S	S	U/S	S										
	Goulburn (Main)	49	307	-	-	356	314	55	-	369	13	8	-	41	-
	Maitland	69	138	-	-	207	51	76	-	127	-80	2	-	65	-
	Long Bay Complex														
	- Special Purpose Centre	11	41	-	4	56	60	-	-	60	4	-	-	-	-
M	- L. B. Hospital - Med.	6	24	-	-	30	16	12	-	28	-2	-	-	-	-
A	- L. B. Hospital - Psych.	26	61	1	1	89	84	-	-	84	-5	-	-	-	-
X	- Prince Henry Annexe	-	1	-	-	1	-	-	7	7	6	-	-	-	-
I	- Reception & Induction	61	169	-	-	230	410	2	-	412	182	-	-	86	-
M	- Special Care C. C.														
U	- Special Care Unit	3	15	-	-	18	27	-	-	27	9	-	-	-	-
M	- Crisis Support Unit	8	5	1	-	14	-	18	-	18	4	-	-	-	-
	- Lifestyles Unit	-	8	-	-	8	-	8	-	8	0	-	-	-	-
	- Remand Centre	332	23	-	-	355	216	2	8	226	-129	9	-	52	-
	Lithgow	52	230	-	-	282	298	-	-	298	16	1	-	36	-
	<b>Sub-total</b>	<b>617</b>	<b>1022</b>	<b>2</b>	<b>5</b>	<b>1646</b>	<b>1476</b>	<b>173</b>	<b>15</b>	<b>1664</b>	<b>18</b>	<b>20</b>	<b>0</b>	<b>280</b>	<b>0</b>
	Bathurst (Main)	43	177	-	-	220	220	4	-	224	4	1	-	5	-
M	Broken Hill	7	38	-	1	46	14	14	-	28	-18	-	-	-	-
E	Cooma	22	134	-	-	156	112	-	8	120	-36	-	-	-	-
D	Grafton (Main)	51	79	-	4	134	42	-	12	54	-80	-	-	-	-
I	Mulawa	-	-	61	116	177	162	52	8	222	45	-	13	-	18
U	Parramatta	184	225	-	-	409	292	-	-	292	-117	3	-	-	-
M	Parklea N.W.R.	81	199	-	-	295	405	-	-	405	110	-	-	-	-
	- Work Release	-	15	-	-	-	-	-	-	-	-	-	-	-	-
	Junee (Medium)	41	239	-	-	280	368	16	-	384	104	5	-	181	-
	Tamworth	14	39	-	-	53	-	66	-	66	13	-	-	2	-
	<b>Sub-total</b>	<b>443</b>	<b>1145</b>	<b>61</b>	<b>121</b>	<b>1770</b>	<b>1615</b>	<b>152</b>	<b>28</b>	<b>1795</b>	<b>25</b>	<b>9</b>	<b>13</b>	<b>188</b>	<b>18</b>
	Berrima	6	56	-	-	62	57	4	-	61	-1	-	-	-	-
	Emu Plains N.W.R.	-	-	10	63	75	116	2	-	118	43	-	-	-	-
	- Work Release	-	-	-	2	-	-	-	-	-	-	-	-	-	-
	Norma Parker N.W.R.	-	-	2	40	58	16	46	28	90	32	-	-	-	-
	- Work Release	-	-	-	16	-	-	-	-	-	-	-	-	-	-
M	Silverwater N.W.R.	14	234	-	-	379	45	408	-	453	74	-	-	-	-
I	- Work Release	2	129	-	-	-	-	-	-	-	-	-	-	-	-
N	Goulburn (X-Wing)	10	93	-	-	103	90	-	-	90	-13	-	-	-	-
I	Bathurst (X-Wing)	5	86	-	-	91	89	-	-	89	-2	-	-	-	-
M	Grafton (C-Unit)	8	111	-	-	119	96	-	-	96	-23	-	-	-	-
U	Industrial Training Centre	20	353	-	-	373	236	37	-	273	-100	-	-	-	-
M	St Heliers	-	230	-	-	230	184	-	5	189	-41	-	-	-	-
	Glen Innes	-	121	-	-	121	154	-	-	154	33	-	-	-	-
	Mannus	5	122	-	-	127	81	48	12	141	14	-	-	-	-
	Oberon	6	75	-	-	81	80	-	-	80	-1	-	-	-	-
	Kirkconnell	9	186	-	-	195	70	60	-	130	-65	-	-	-	-
	Junee (Minimum)	19	289	-	-	308	228	-	-	228	-80	4	-	188	-
	John Morony	21	203	-	-	224	232	18	-	250	26	-	-	-	-
	Cessnock	42	368	-	-	410	407	50	-	457	47	-	-	3	-
	<b>Sub-total</b>	<b>167</b>	<b>2656</b>	<b>12</b>	<b>121</b>	<b>2956</b>	<b>2181</b>	<b>673</b>	<b>45</b>	<b>2899</b>	<b>-57</b>	<b>4</b>	<b>0</b>	<b>191</b>	<b>0</b>
	<b>TOTAL FULL-TIME</b>	<b>1227</b>	<b>4823</b>	<b>75</b>	<b>247</b>	<b>6372</b>	<b>5272</b>	<b>998</b>	<b>88</b>	<b>6358</b>	<b>-14</b>	<b>33</b>	<b>13</b>	<b>659</b>	<b>18</b>

\* Design accommodation in uncrowded conditions - amended 24th March, 1995.

N.W.R.=Non Work Release

\*\*Difference between number of beds in uncrowded conditions and number of inmates.

S=Sentenced inmates (not including appellants) U/S=Unsentenced inmates (including appellants, trials, remandees and deportees)

Included in the above figures are:

Number of fine defaulters (in gaol for no other reason)	67 M +	12 F =	79	(including 0 at Junee)
Number of inmates on appeal	472 M +	31 F =	503	(including 60 at Junee)
Number of inmates on remand or for trial	752 M +	44 F =	796	(including 0 at Junee)
Number of juveniles under 18 years	0 M +	0 F =	0	(including 0 at Junee)
Total full-time inmates =	5784 (at DOCS institutions)	+	588 (at Junee)	= 6372

\*\*\*\*\* Research & Statistics \*\*\*\*\*

**WEEKLY STATES FOR THE WEEK ENDING: 6TH AUGUST, 1995**

**PERIODIC**

**DETAINEES (P.D.'S)**

	People with warrants			Attending			No.*	Beds*
	Stage1	Stage2	Total	Stage1	Stage2	Total	Beds	+/-
Campbelltown	83	16	99	45	16	61	52	7
Grafton	31	28	59	19	28	47	50	31
Malabar	106	51	157	63	46	109	164	101
Malabar Mid-week	46	37	83	26	34	60	164	138
Parramatta	64	13	77	45	13	58	52	7
St Heliers	24	9	33	15	9	24	25	10
Silverwater	156	63	219	83	61	144	110	27
Silverwater Mid-week	119	46	165	60	38	98	110	50
Tomago	94	68	162	61	65	126	96	35
Windsor	92	24	116	54	24	78	60	6
Administration**	12	0	12	0	0	0	0	0
Administration Midweek	2	1	3	0	1	1	0	0
Wollongong	74	25	99	40	25	65	82	42
Mannus	16	8	24	6	8	14	24	18
<b>Total Males</b>	<b>919</b>	<b>389</b>	<b>1308</b>	<b>517</b>	<b>368</b>	<b>885</b>	<b>989</b>	<b>472</b>

Emu Plains	65	37	102	34	36	70	40	6
Administration**	2	0	2	0	0	0	0	0
Mannus	2	1	3	2	1	3	6	4
<b>Total Females</b>	<b>69</b>	<b>38</b>	<b>107</b>	<b>36</b>	<b>37</b>	<b>73</b>	<b>46</b>	<b>10</b>

<b>TOTAL P.D.'S</b>	<b>988</b>	<b>427</b>	<b>1415</b>	<b>553</b>	<b>405</b>	<b>958</b>	<b>1035</b>	<b>482</b>
---------------------	------------	------------	-------------	------------	------------	------------	-------------	------------

\* Number of free beds calculated on the numbers attending in Stage 1 and assuming uncrowded conditions.

Amended 26th March, 1995.

\*\* Administration Stage 1 comprises detainees who have failed to attend for more than 8 consecutive weeks.

Number of fine defaulters attending periodic detention = 5.

**The total number of people with warrants comprises:**

Number attending		885	73	958
Number in full-time custody	sentenced-one month or less	3 M +	0 F =	3
	sentenced-more than one month	13 M +	1 F =	14
	remand	19 M +	0 F =	19
Number on appeal with bail		3 M +	0 F =	3
Number absent - leave applied for	- sick	101 M +	9 F =	110
	- other	28 M +	5 F =	33
<b>Total absent - reasons known</b>		<b>167 M +</b>	<b>15 F =</b>	<b>182</b>
Number absent without leave	- no reason given	107 M +	8 F =	115
	- legal action pending	146 M +	11 F =	157
	- appealing Sec 25 cancellation	3 M +	0 F =	3
<b>Total absent without leave</b>		<b>256 M +</b>	<b>19 F =</b>	<b>275</b>
<b>Total number of people with warrants</b>		<b>1308 M +</b>	<b>107 F =</b>	<b>1415</b>

**WEEKLY STATES FOR THE WEEK ENDING:**

**6TH AUGUST, 1995**

	Full-time Inmates		All Inmates Full-time + PD	
	No.	Date	No.	Date
Highest weekly state, year ending previous week	6424	9/7/95	7846	9/7/95
Lowest weekly state, year ending previous week	6110	29/1/95	7464	29/1/95
State for previous week	6394	30/7/95	7788	30/7/95
<b>State for this week (amended figure)</b>	<b>6372</b>	<b>6/8/95</b>	<b>7787</b>	<b>6/8/95</b>

\*\*\*\*\* Research & Statistics \*\*\*\*\*

**WEEKLY STATES AT MIDNIGHT ON: 3RD SEPTEMBER, 1995**

FULL-TIME INMATES		INMATES				*Accommodation in				Beds +/- **	Segregation		Protection		
		Males		Females		Total	Single Cells	Multi Cells	Dorm		Total Beds	M	F	M	F
		U/S	S	U/S	S										
	Goulburn (Main)	43	331	-	-	374	314	55	-	369	-5	8	-	42	-
	Maitland	33	80	-	-	113	78	56	-	134	21	-	-	67	-
	Long Bay Complex														
	- Special Purpose Centre	9	39	-	4	52	60	-	-	60	8	-	-	-	-
M	- L. B. Hospital - Med.	2	20	-	1	23	16	12	-	28	5	-	-	-	-
A	- L. B. Hospital - Psych.	24	66	-	1	91	84	-	-	84	-7	-	-	-	-
X	- Prince Henry Annexe	-	1	-	-	1	-	-	7	7	6	-	-	-	-
I	- Reception & Induction	47	194	-	-	241	410	2	-	412	171	-	-	85	-
M	- Special Care C. C.														
U	- Special Care Unit	1	16	-	-	17	27	-	-	27	10	-	-	-	-
M	- Crisis Support Unit	7	4	-	-	11	-	18	-	18	7	-	-	-	-
	- Lifestyles Unit	-	5	-	-	5	-	8	-	8	3	-	-	-	-
	- Remand Centre	340	24	-	-	364	216	2	8	226	-138	10	-	53	-
	Lithgow	57	215	-	-	272	298	-	-	298	26	4	-	35	-
	<b>Sub-total</b>	<b>563</b>	<b>995</b>	<b>0</b>	<b>6</b>	<b>1564</b>	<b>1503</b>	<b>153</b>	<b>15</b>	<b>1671</b>	<b>107</b>	<b>22</b>	<b>0</b>	<b>282</b>	<b>0</b>
	Bathurst (Main)	48	184	-	-	232	220	4	-	224	-8	1	-	8	-
M	Broken Hill	5	35	-	-	40	14	14	-	28	-12	-	-	-	-
E	Cooma	17	138	-	-	155	112	-	8	120	-35	-	-	-	-
D	Grafton (Main)	51	93	2	4	150	42	-	12	54	-96	1	-	-	-
I	Mulawa	-	-	55	118	173	162	52	8	222	49	-	3	-	12
U	Parramatta	194	220	-	-	414	292	-	-	292	-122	-	-	-	-
M	Parklea N.W.R.	81	191	-	-	294	405	-	-	405	111	-	-	-	-
	- Work Release	-	22	-	-	-	-	-	-	-	-	-	-	-	-
	Junee (Medium)	27	243	-	-	270	368	16	-	384	114	-	-	191	-
	Tamworth	9	15	-	-	24	-	66	-	66	42	-	-	1	-
	<b>Sub-total</b>	<b>432</b>	<b>1141</b>	<b>57</b>	<b>122</b>	<b>1752</b>	<b>1615</b>	<b>152</b>	<b>28</b>	<b>1795</b>	<b>43</b>	<b>2</b>	<b>3</b>	<b>200</b>	<b>12</b>
	Berrima	5	57	-	-	62	57	4	-	61	-1	-	-	-	-
	Emu Plains N.W.R.	-	-	7	63	71	116	2	-	118	47	-	-	-	-
	- Work Release	-	-	-	1	-	-	-	-	-	-	-	-	-	-
	Norma Parker N.W.R.	-	-	6	42	60	16	46	28	90	30	-	-	-	-
	- Work Release	-	-	-	12	-	-	-	-	-	-	-	-	-	-
M	Silverwater N.W.R.	20	229	-	-	399	45	408	-	453	54	-	-	-	-
I	- Work Release	2	148	-	-	-	-	-	-	-	-	-	-	-	-
N	Goulburn (X-Wing)	9	102	-	-	111	90	-	-	90	-21	-	-	-	-
I	Bathurst (X-Wing)	6	85	-	-	91	89	-	-	89	-2	-	-	-	-
M	Grafton (C-Unit)	9	108	-	-	117	96	-	-	96	-21	-	-	-	-
U	Industrial Training Centre	20	341	-	-	361	236	37	-	273	-88	-	-	-	-
M	St Heliers	-	229	-	-	229	184	-	5	189	-40	-	-	-	-
	Glen Innes	-	118	-	-	118	154	-	-	154	36	-	-	-	-
	Mannus	5	123	-	-	128	81	48	12	141	13	-	-	-	-
	Oberon	8	91	-	-	99	80	-	-	80	-19	-	-	-	-
	Kirkconnell	10	184	-	-	194	70	60	-	130	-64	-	-	-	-
	Junee (Minimum)	34	273	-	-	307	228	-	-	228	-79	-	-	172	-
	John Morony	25	210	-	-	235	232	18	-	250	15	-	-	-	-
	Cessnock	46	370	-	-	416	407	50	-	457	41	1	-	1	-
	Malabar PDC	-	24	-	-	24	-	50	-	50	26	-	-	-	-
	<b>Sub-total</b>	<b>199</b>	<b>2692</b>	<b>13</b>	<b>118</b>	<b>3022</b>	<b>2181</b>	<b>723</b>	<b>45</b>	<b>2949</b>	<b>-73</b>	<b>1</b>	<b>0</b>	<b>173</b>	<b>0</b>
	<b>TOTAL FULL-TIME</b>	<b>1194</b>	<b>4828</b>	<b>70</b>	<b>246</b>	<b>6338</b>	<b>5299</b>	<b>1028</b>	<b>88</b>	<b>6415</b>	<b>77</b>	<b>25</b>	<b>3</b>	<b>655</b>	<b>12</b>

\* Design accommodation in uncrowded conditions - amended 16th August, 1995.

N.W.R.=Non Work Release

\*\*Difference between number of beds in uncrowded conditions and number of inmates.

S=Sentenced inmates (not including appellants) U/S=Unsentenced inmates (including appellants, trials, remandees and deportees)

Included in the above figures are:

Number of fine defaulters (in gaol for no other reason)	62 M +	12 F =	74	(including 0 at Junee)
Number of inmates on appeal	455 M +	30 F =	485	(including 60 at Junee)
Number of inmates on remand or for trial	737 M +	40 F =	777	(including 0 at Junee)
Number of juveniles under 18 years	0 M +	0 F =	0	(including 0 at Junee)
Total full-time inmates =	5761 (at DOCS institutions)	+	577 (at Junee)	= 6338

\*\*\*\*\* Research & Statistics \*\*\*\*\*



**WEEKLY STATES FOR THE WEEK ENDING: 3RD SEPTEMBER, 1995**

**PERIODIC**

**DETAINEES (P.D.'S)**

	People with warrants			Attending			No.*	Beds*
	Stage1	Stage2	Total	Stage1	Stage2	Total	Beds	+/-
Campbelltown	87	16	103	49	15	64	52	3
Grafton	23	29	52	18	28	46	50	32
Malabar	109	53	162	62	51	113	114	52
Malabar Mid-week	44	38	82	20	34	54	114	94
Parramatta	61	10	71	36	9	45	52	16
St Heliers	25	10	35	16	10	26	25	9
Silverwater	152	62	214	79	62	141	110	31
Silverwater Mid-week	125	49	174	69	49	118	110	41
Tomago	94	66	160	64	65	129	96	32
Windsor	90	23	113	60	23	83	60	0
Administration**	12	0	12	0	0	0	0	0
Administration Midweek	4	1	5	0	1	1	0	0
Wollongong	70	28	98	43	28	71	82	39
Mannus	19	7	26	12	6	18	24	12
<b>Total Males</b>	<b>915</b>	<b>392</b>	<b>1307</b>	<b>528</b>	<b>381</b>	<b>909</b>	<b>889</b>	<b>361</b>

Emu Plains	63	36	99	34	32	66	40	6
Administration**	2	0	2	0	0	0	0	0
Mannus	2	1	3	2	1	3	6	4
<b>Total Females</b>	<b>67</b>	<b>37</b>	<b>104</b>	<b>36</b>	<b>33</b>	<b>69</b>	<b>46</b>	<b>10</b>

<b>TOTAL P.D.'S</b>	<b>982</b>	<b>429</b>	<b>1411</b>	<b>564</b>	<b>414</b>	<b>978</b>	<b>935</b>	<b>371</b>
---------------------	------------	------------	-------------	------------	------------	------------	------------	------------

\* Number of free beds calculated on the numbers attending in Stage 1 and assuming uncrowded conditions.

Amended 16th August, 1995.

\*\* Administration Stage 1 comprises detainees who have failed to attend for more than 8 consecutive weeks.

Number of fine defaulters attending periodic detention = 2.

The total number of people with warrants comprises:

Number attending		909	69	978
Number in full-time custody	sentenced-one month or less	3 M +	0 F =	3
	sentenced-more than one month	11 M +	0 F =	11
	remand	24 M +	1 F =	25
Number on appeal with bail		1 M +	0 F =	1
Number absent - leave applied for	- sick	70 M +	11 F =	81
	- other	30 M +	3 F =	33
Total absent - reasons known		139 M +	15 F =	154
Number absent without leave	- no reason given	115 M +	8 F =	123
	- legal action pending	142 M +	11 F =	153
	- appealing Sec 25 cancellation	2 M +	1 F =	3
Total absent without leave		259 M +	20 F =	279
Total number of people with warrants		1307 M +	104 F =	1411

**WEEKLY STATES FOR THE WEEK ENDING:**

**3RD SEPTEMBER, 1995**

	Full-time Inmates		All Inmates Full-time + PD	
	No.	Date	No.	Date
Highest weekly state, year ending previous week	6424	9/7/95	7846	9/7/95
Lowest weekly state, year ending previous week	6110	29/1/95	7464	29/1/95
State for previous week (amended figure)	6311	27/8/95	7725	27/8/95
State for this week (amended figure)	6338	3/9/95	7749	3/9/95

\*\*\*\*\* Research & Statistics \*\*\*\*\*

**WEEKLY STATES AT MIDNIGHT ON: 1ST OCTOBER, 1995**

FULL-TIME INMATES	INMATES					*Accommodation in				Beds +/- **	Segregation		Protection	
	Males		Females		Total	Single Cells	Multi Cells	Dorm	Total Beds		M	F	M	F
	U/S	S	U/S	S										
Goulburn (Main)	55	336	-	-	391	314	55	-	369	-22	14	-	43	-
Maitland	37	92	-	-	129	78	56	-	134	5	3	-	65	-
Long Bay Complex														
- Special Purpose Centre	7	36	-	4	47	60	-	-	60	13	-	-	-	-
M - L. B. Hospital - Med.	8	22	-	-	30	16	12	-	28	-2	-	-	-	-
A - L. B. Hospital - Psych	30	60	-	-	90	84	-	-	84	-6	-	-	-	-
X - Prince Henry Annexe	3	2	-	-	5	-	-	7	7	2	-	-	-	-
I - Reception & Induction	51	175	-	-	226	410	2	-	412	186	-	-	83	-
M - Special Care C. C.														
U - Special Care Unit	1	23	-	-	24	27	-	-	27	3	-	-	-	-
M - Crisis Support Unit	3	10	-	-	13	-	18	-	18	5	-	-	-	-
- Lifestyles Unit	1	7	-	-	8	-	8	-	8	0	-	-	-	-
- Remand Centre	333	23	-	-	356	216	2	8	226	-130	10	-	55	-
Lithgow	55	228	-	-	283	298	-	-	298	15	2	-	36	-
<b>Sub-total</b>	<b>584</b>	<b>1014</b>	<b>0</b>	<b>4</b>	<b>1602</b>	<b>1503</b>	<b>153</b>	<b>15</b>	<b>1671</b>	<b>69</b>	<b>29</b>	<b>0</b>	<b>282</b>	<b>0</b>
M Bathurst (Main)	52	170	-	-	222	220	4	-	224	2	1	-	7	-
E Broken Hill	7	34	-	-	41	14	14	-	28	-13	-	-	-	-
D Cooma	15	146	-	-	161	112	-	8	120	-41	-	-	2	-
I Grafton (Main)	43	96	1	3	143	42	-	12	54	-89	-	-	-	-
U Mulawa	-	-	65	105	170	162	52	8	222	52	-	5	-	14
M Parramatta	194	216	-	-	410	292	-	-	292	-118	4	-	-	-
M Parklea N.W.R.	80	193	-	-	290	405	-	-	405	115	-	-	-	-
- Work Release	-	17	-	-	-	-	-	-	-	-	-	-	-	-
Junee (Medium)	34	248	-	-	282	368	16	-	384	102	2	-	184	-
Tamworth	18	15	-	-	33	-	66	-	66	33	-	-	3	-
<b>Sub-total</b>	<b>443</b>	<b>1135</b>	<b>66</b>	<b>108</b>	<b>1752</b>	<b>1615</b>	<b>152</b>	<b>28</b>	<b>1795</b>	<b>43</b>	<b>7</b>	<b>5</b>	<b>196</b>	<b>14</b>
M Berrima	4	60	-	-	64	57	4	-	61	-3	-	-	-	-
Emu Plains N.W.R.	-	-	7	65	74	116	2	-	118	44	-	-	-	-
- Work Release	-	-	-	2	-	-	-	-	-	-	-	-	-	-
Norma Parker N.W.R.	-	-	6	40	55	16	46	28	90	35	-	-	-	-
- Work Release	-	-	-	9	-	-	-	-	-	-	-	-	-	-
M Silverwater N.W.R.	27	233	-	-	393	45	408	-	453	60	-	-	-	-
I - Work Release	2	131	-	-	-	-	-	-	-	-	-	-	-	-
N Goulburn (X-Wing)	10	100	-	-	110	90	-	-	90	-20	-	-	-	-
I Bathurst (X-Wing)	6	83	-	-	89	89	-	-	89	0	-	-	-	-
M Grafton (C-Unit)	10	103	-	-	113	96	-	-	96	-17	-	-	-	-
U Industrial Training Centre	20	347	-	-	367	236	37	-	273	-94	-	-	-	-
M St Heliers	-	223	-	-	223	184	-	5	189	-34	-	-	-	-
Glen Innes	-	128	-	-	128	154	-	-	154	26	-	-	-	-
Mannus	4	122	-	-	126	81	48	12	141	15	-	-	-	-
Oberon	7	84	-	-	91	80	-	-	80	-11	-	-	-	-
Kirkconnell	8	178	-	-	186	70	60	-	130	-56	-	-	-	-
Junee (Minimum)	31	283	-	-	314	228	-	-	228	-86	1	-	178	-
John Morony	32	205	-	-	237	232	18	-	250	13	1	-	-	-
Cessnock	51	367	-	-	418	407	50	-	457	39	2	-	5	-
Malabar PDC	-	31	-	-	31	-	50	-	50	19	-	-	-	-
<b>Sub-total</b>	<b>212</b>	<b>2678</b>	<b>13</b>	<b>116</b>	<b>3019</b>	<b>2181</b>	<b>723</b>	<b>45</b>	<b>2949</b>	<b>-70</b>	<b>4</b>	<b>0</b>	<b>183</b>	<b>0</b>
<b>TOTAL FULL-TIME</b>	<b>1239</b>	<b>4827</b>	<b>79</b>	<b>228</b>	<b>6373</b>	<b>5299</b>	<b>1028</b>	<b>88</b>	<b>6415</b>	<b>42</b>	<b>40</b>	<b>5</b>	<b>661</b>	<b>14</b>

\* Design accommodation in uncrowded conditions - amended 16th August, 1995.

N.W.R.=Non Work Release

\*\*Difference between number of beds in uncrowded conditions and number of inmates.

S=Sentenced inmates (not including appellants) U/S=Unsentenced inmates (including appellants, trials, remandees and deportees)

Included in the above figures are:

Number of fine defaulters (in gaol for no other reason)	64 M +	10 F =	74	(including 1 at Junee)
Number of inmates on appeal	490 M +	32 F =	522	(including 61 at Junee)
Number of inmates on remand or for trial	746 M +	47 F =	793	(including 4 at Junee)
Number of juveniles under 18 years	0 M +	0 F =	0	(including 0 at Junee)
Total full-time inmates =	5777 (at DOCS institutions)	+	596 (at Junee)	= 6373

\*\*\*\*\* Research & Statistics \*\*\*\*\*

**WEEKLY STATES FOR THE WEEK ENDING: 1ST OCTOBER, 1995**

**PERIODIC**

**DETAINEES (P.D.'S)**

	People with warrants			Attending			No.*	Beds*
	Stage1	Stage2	Total	Stage1	Stage2	Total	Beds	+/-
Campbelltown	96	14	110	55	13	68	52	-3
Grafton	24	27	51	16	26	42	50	34
Malabar	113	52	165	55	47	102	114	59
Malabar Mid-week	51	33	84	26	30	56	114	88
Parramatta	53	10	63	31	10	41	52	21
St Heliers	24	8	32	17	7	24	25	8
Silverwater	179	70	249	90	70	160	110	20
Silverwater Mid-week	123	53	176	69	47	116	110	41
Tomago	85	70	155	57	69	126	96	39
Windsor	86	25	111	48	25	73	60	12
Administration**	11	0	11	0	0	0	0	0
Administration Midweek	4	1	5	0	1	1	0	0
Wollongong	72	30	102	39	30	69	82	43
Mannus	16	8	24	11	8	19	24	13
<b>Total Males</b>	<b>937</b>	<b>401</b>	<b>1338</b>	<b>514</b>	<b>383</b>	<b>897</b>	<b>889</b>	<b>375</b>

Emu Plains	65	36	101	34	34	68	40	6
Administration**	1	0	1	0	0	0	0	0
Mannus	3	1	4	3	1	4	6	3
<b>Total Females</b>	<b>69</b>	<b>37</b>	<b>106</b>	<b>37</b>	<b>35</b>	<b>72</b>	<b>46</b>	<b>9</b>

<b>TOTAL P.D.'S</b>	<b>1006</b>	<b>438</b>	<b>1444</b>	<b>551</b>	<b>418</b>	<b>969</b>	<b>935</b>	<b>384</b>
---------------------	-------------	------------	-------------	------------	------------	------------	------------	------------

\* Number of free beds calculated on the numbers attending in Stage 1 and assuming uncrowded conditions.  
Amended 16th August, 1995.

\*\* Administration Stage 1 comprises detainees who have failed to attend for more than 8 consecutive weeks.  
Number of fine defaulters attending periodic detention = 1.

**The total number of people with warrants comprises:**

Number attending		897	72	969
Number in full-time custody	sentenced-one month or less	13 M +	0 F =	13
	sentenced-more than one month	7 M +	1 F =	8
	remand	20 M +	2 F =	22
Number on appeal with bail		1 M +	0 F =	1
Number absent - leave applied for	- sick	80 M +	14 F =	94
	- other	25 M +	0 F =	25
<b>Total absent - reasons known</b>		<b>146 M +</b>	<b>17 F =</b>	<b>163</b>
Number absent without leave	- no reason given	112 M +	8 F =	120
	- legal action pending	182 M +	9 F =	191
	- appealing Sec 25 cancellation	1 M +	0 F =	1
<b>Total absent without leave</b>		<b>295 M +</b>	<b>17 F =</b>	<b>312</b>
<b>Total number of people with warrants</b>		<b>1338 M +</b>	<b>106 F =</b>	<b>1444</b>

**WEEKLY STATES FOR THE WEEK ENDING:**

**1ST OCTOBER, 1995**

	Full-time Inmates		All Inmates Full-time + PD	
	No.	Date	No.	Date
Highest weekly state, year ending previous week	6424	9/7/95	7846	9/7/95
Lowest weekly state, year ending previous week	6110	29/1/95	7464	29/1/95
State for previous week (amended figure)	6388	24/9/95	7821	24/9/95
State for this week	6373	1/10/95	7817	1/10/95

\*\*\*\*\* Research & Statistics \*\*\*\*\*

**WEEKLY STATES AT MIDNIGHT ON: 5TH NOVEMBER, 1995**

FULL-TIME INMATES	INMATES					*Accommodation in				Beds +/- **	Segreg- ation		Protect- ion	
	Males		Females		Total	Single Cells	Multi Cells	Dorm	Total Beds		M	F	M	F
	U/S	S	U/S	S										
Goulburn (Main)	40	336	-	-	376	314	55	-	369	-7	17	-	40	-
Maitland	40	86	-	-	126	78	56	-	134	8	5	-	62	-
Long Bay Complex														
- Special Purpose Centre	9	33	-	4	46	51	-	-	51	5	-	-	-	-
- L. B. Development Unit	2	3	-	-	5	9	-	-	9	4	-	-	-	-
M - L. B. Hospital - Med.	8	21	1	-	30	16	12	-	28	-2	-	-	-	-
A - L. B. Hospital - Psych.	30	60	-	-	90	84	-	-	84	-6	-	-	-	-
X - Prince Henry Annexe	-	2	-	-	2	-	-	7	7	5	-	-	-	-
I - Reception & Induction	69	172	-	-	241	410	2	-	412	171	-	-	90	-
M - Special Care C.C.														
U - Special Care Unit	1	18	-	-	19	27	-	-	27	8	-	-	-	-
M - Crisis Support Unit	1	10	-	-	11	-	18	-	18	7	-	-	-	-
- Lifestyles Unit	-	7	-	-	7	-	8	-	8	1	-	-	-	-
- Remand Centre	336	23	-	-	359	216	2	8	226	-133	6	-	57	-
Lithgow	52	228	-	-	280	298	-	-	298	18	-	-	37	-
<b>Sub-total</b>	<b>588</b>	<b>999</b>	<b>1</b>	<b>4</b>	<b>1592</b>	<b>1503</b>	<b>153</b>	<b>15</b>	<b>1671</b>	<b>79</b>	<b>28</b>	<b>0</b>	<b>286</b>	<b>0</b>
Bathurst (Main)	45	184	-	-	229	220	4	-	224	-5	-	-	22	-
M Broken Hill	8	31	-	-	39	14	14	-	28	-11	-	-	-	-
E Cooma	18	143	-	-	161	112	-	8	120	-41	1	-	-	-
D Grafton (Main)	32	105	1	3	141	42	-	12	54	-87	4	-	-	-
I Mulawa	-	-	55	125	180	162	52	8	222	42	-	2	-	7
U Parramatta	192	226	-	-	418	292	-	-	292	-126	6	-	-	-
M Parklea N.W.R.	90	185	-	-	293	405	-	-	405	112	3	-	-	-
- Work Release	-	18	-	-										
June (Medium)	39	215	-	-	254	368	16	-	384	130	1	-	188	-
Tamworth	8	18	-	-	26	-	66	-	66	40	-	-	-	-
<b>Sub-total</b>	<b>432</b>	<b>1125</b>	<b>56</b>	<b>128</b>	<b>1741</b>	<b>1615</b>	<b>152</b>	<b>28</b>	<b>1795</b>	<b>54</b>	<b>15</b>	<b>2</b>	<b>210</b>	<b>7</b>
Berrima	4	60	-	-	64	57	4	-	61	-3	-	-	-	-
Emu Plains N.W.R.	-	-	10	64	77	116	2	-	118	41	-	-	-	-
- Work Release	-	-	-	3										
Norma Parker N.W.R.	-	-	5	36	52	16	46	28	90	38	-	-	-	-
- Work Release	-	-	-	11										
M Silverwater N.W.R.	24	235	-	-	389	45	408	-	453	64	-	-	-	-
I - Work Release	1	129	-	-										
N Goulburn (X-Wing)	15	90	-	-	105	90	-	-	90	-15	-	-	-	-
I Bathurst (X-Wing)	5	83	-	-	88	89	-	-	89	1	-	-	-	-
M Grafton (C-Unit)	10	110	-	-	120	96	-	-	96	-24	-	-	-	-
U Industrial Training Centre	19	351	-	-	370	236	37	-	273	-97	-	-	-	-
M St Heliers	-	237	-	-	237	184	-	5	189	-48	-	-	-	-
Glen Innes	-	125	-	-	125	154	-	-	154	29	-	-	-	-
Mannus	2	127	-	-	129	81	48	12	141	12	-	-	-	-
Oberon	7	85	-	-	92	80	-	-	80	-12	-	-	-	-
Kirkconnell	7	182	-	-	189	70	60	-	130	-59	-	-	-	-
June (Minimum)	24	280	-	-	304	228	-	-	228	-76	-	-	176	-
John Morony	22	212	-	-	234	232	18	-	250	16	1	-	-	-
Cessnock	57	361	-	-	418	407	50	-	457	39	4	-	5	-
Malabar PDC	-	30	-	-	30	-	50	-	50	20	-	-	-	-
<b>Sub-total</b>	<b>197</b>	<b>2697</b>	<b>15</b>	<b>114</b>	<b>3023</b>	<b>2181</b>	<b>723</b>	<b>45</b>	<b>2949</b>	<b>-74</b>	<b>5</b>	<b>0</b>	<b>181</b>	<b>0</b>
<b>TOTAL FULL-TIME</b>	<b>1217</b>	<b>4821</b>	<b>72</b>	<b>246</b>	<b>6356</b>	<b>5299</b>	<b>1028</b>	<b>88</b>	<b>6415</b>	<b>59</b>	<b>48</b>	<b>2</b>	<b>677</b>	<b>7</b>

\* Design accommodation in uncrowded conditions - amended 16th August, 1995.

N.W.R.=Non Work Release

\*\*Difference between number of beds in uncrowded conditions and number of inmates.

S=Sentenced inmates (not including appellants) U/S=Unsentenced inmates (including appellants, trials, remandees and deportees)

Included in the above figures are:

Number of fine defaulters (in gaol for no other reason) 71 M + 19 F = 90 (including 2 at June)

Number of inmates on appeal 471 M + 33 F = 504 (including 53 at June)

Number of inmates on remand or for trial 743 M + 39 F = 782 (including 10 at June)

Number of juveniles under 18 years 0 M + 0 F = 0 (including 0 at June)

Total full-time inmates = 5798 (at DOCS institutions) + 558 (at June) = 6356

**WEEKLY STATES FOR THE WEEK ENDING: 5TH NOVEMBER, 1995**

PERIODIC DETAINEES (P.D.'S)	People with warrants			Attending			No.*	Beds*
	Stage1	Stage2	Total	Stage1	Stage2	Total	Beds	+/-
Campbelltown	105	11	116	67	9	76	52	-15
Grafton	37	24	61	23	22	45	50	27
Malabar	111	50	161	62	49	111	114	52
Malabar Mid-week	55	31	86	25	28	53	114	89
Parramatta	58	13	71	38	12	50	52	14
St Heliers	22	14	36	9	14	23	25	16
Silverwater	167	59	226	91	57	148	110	19
Silverwater Mid-week	143	62	205	75	59	134	110	35
Tomago	91	65	156	64	62	126	96	32
Windsor	82	23	105	43	23	66	60	17
Administration**	20	0	20	0	0	0	0	0
Administration Midweek	5	0	5	0	0	0	0	0
Wollongong	79	24	103	50	24	74	82	32
Mannus	12	8	20	6	8	14	24	18
<b>Total Males</b>	<b>987</b>	<b>384</b>	<b>1371</b>	<b>553</b>	<b>367</b>	<b>920</b>	<b>889</b>	<b>336</b>

Emu Plains	75	36	111	47	35	82	40	-7
Administration**	2	0	2	0	0	0	0	0
Mannus	2	2	4	2	2	4	6	4
<b>Total Females</b>	<b>79</b>	<b>38</b>	<b>117</b>	<b>49</b>	<b>37</b>	<b>86</b>	<b>46</b>	<b>-3</b>

<b>TOTAL P.D.'S</b>	<b>1066</b>	<b>422</b>	<b>1488</b>	<b>602</b>	<b>404</b>	<b>1006</b>	<b>935</b>	<b>333</b>
---------------------	-------------	------------	-------------	------------	------------	-------------	------------	------------

\* Number of free beds calculated on the numbers attending in Stage 1 and assuming uncrowded conditions.

Amended 16th August, 1995.

\*\* Administration Stage 1 comprises detainees who have failed to attend for more than 8 consecutive weeks.

Number of fine defaulters attending periodic detention = 6.

**The total number of people with warrants comprises:**

Number attending		920	86	1006
Number in full-time custody	sentenced-one month or less	4 M +	0 F =	4
	sentenced-more than one month	6 M +	2 F =	8
	remand	29 M +	1 F =	30
Number on appeal with bail		1 M +	0 F =	1
Number absent - leave applied for	- sick	85 M +	14 F =	99
	- other	26 M +	2 F =	28
<b>Total absent - reasons known</b>		<b>151 M +</b>	<b>19 F =</b>	<b>170</b>
Number absent without leave	- no reason given	112 M +	3 F =	115
	- legal action pending	186 M +	9 F =	195
	- appealing Sec 25 cancellation	2 M +	0 F =	2
<b>Total absent without leave</b>		<b>300 M +</b>	<b>12 F =</b>	<b>312</b>
<b>Total number of people with warrants</b>		<b>1371 M +</b>	<b>117 F =</b>	<b>1488</b>

**WEEKLY STATES FOR THE WEEK ENDING:**

**5TH NOVEMBER, 1995**

	Full-time Inmates		All Inmates Full-time + PD	
	No.	Date	No.	Date
Highest weekly state, year ending previous week	6424	9/7/95	7846	9/7/95
Lowest weekly state, year ending previous week	6110	29/1/95	7464	29/1/95
State for previous week	6352	29/10/95	7815	29/10/95
<b>State for this week</b>	<b>6356</b>	<b>5/11/95</b>	<b>7844</b>	<b>5/11/95</b>

\*\*\*\*\* Research & Statistics \*\*\*\*\*

**WEEKLY STATES AT MIDNIGHT ON: 3RD DECEMBER, 1995**

FULL-TIME INMATES	INMATES					*Accommodation in				Beds +/- **	Segregation		Protection	
	Males		Females		Total	Single Cells	Multi Cells	Dorm	Total Beds		M	F	M	F
	U/S	S	U/S	S										
Goulburn (Main)	38	350	-	-	388	314	55	-	369	-19	11	-	41	-
Maitland	29	83	-	-	112	78	56	-	134	22	5	-	55	-
Long Bay Complex														
- Special Purpose Centre	9	35	-	3	47	51	-	-	51	4	-	-	-	-
- L. B. Development Unit	1	5	-	-	6	9	-	-	9	3	-	-	-	-
M - L. B. Hospital - Med.	9	17	1	-	27	16	12	-	28	1	-	-	-	-
A - L. B. Hospital - Psych.	30	56	-	-	86	84	-	-	84	-2	-	-	-	-
X - Prince Henry Annexe	1	6	-	-	7	-	-	7	7	0	-	-	-	-
I - Reception & Induction	56	176	-	-	232	410	2	-	412	180	-	-	83	-
M - Special Care C. C.														
U - Special Care Unit	-	18	-	-	18	27	-	-	27	9	-	-	-	-
M - Crisis Support Unit	1	11	-	-	12	-	18	-	18	6	-	-	-	-
- Lifestyles Unit	1	7	-	-	8	-	8	-	8	0	-	-	-	-
- Remand Centre	322	22	-	-	344	216	2	8	226	-118	8	-	56	-
Lithgow	54	228	-	-	282	298	-	-	298	16	2	-	35	-
<b>Sub-total</b>	<b>551</b>	<b>1014</b>	<b>1</b>	<b>3</b>	<b>1569</b>	<b>1503</b>	<b>153</b>	<b>15</b>	<b>1671</b>	<b>102</b>	<b>26</b>	<b>0</b>	<b>270</b>	<b>0</b>
Bathurst (Main)	45	170	-	-	215	220	4	-	224	9	-	-	12	-
M Broken Hill	6	33	-	-	39	14	14	-	28	-11	-	-	-	-
E Cooma	16	141	-	-	157	112	-	8	120	-37	-	-	-	-
D Grafton (Main)	32	98	-	1	131	42	-	12	54	-77	1	-	1	-
I Mulawa	-	-	67	104	171	162	52	8	222	51	-	3	-	5
U Parramatta	194	222	-	-	416	292	-	-	292	-124	4	-	-	-
M Parklea N.W.R.	71	202	-	-	294	405	-	-	405	111	1	-	-	-
- Work Release	-	21	-	-	-	-	-	-	-	-	-	-	-	-
Junee (Medium)	42	248	-	-	290	368	16	-	384	94	-	-	216	-
Tamworth	16	13	-	-	29	-	66	-	66	37	-	-	-	-
<b>Sub-total</b>	<b>422</b>	<b>1148</b>	<b>67</b>	<b>105</b>	<b>1742</b>	<b>1615</b>	<b>152</b>	<b>28</b>	<b>1795</b>	<b>53</b>	<b>6</b>	<b>3</b>	<b>229</b>	<b>5</b>
Berrima	5	59	-	-	64	57	4	-	61	-3	-	-	-	-
Emu Plains N.W.R.	-	-	10	63	76	116	2	-	118	42	-	-	-	-
- Work Release	-	-	-	3	-	-	-	-	-	-	-	-	-	-
Norma Parker N.W.R.	-	-	6	44	58	16	46	28	90	32	-	-	-	-
- Work Release	-	-	-	8	-	-	-	-	-	-	-	-	-	-
M Silverwater N.W.R.	16	243	-	-	379	45	408	-	453	74	-	-	-	-
I - Work Release	2	118	-	-	-	-	-	-	-	-	-	-	-	-
N Goulburn (X-Wing)	12	101	-	-	113	90	-	-	90	-23	-	-	-	-
I Bathurst (X-Wing)	2	85	-	-	87	89	-	-	89	2	-	-	-	-
M Grafton (C-Unit)	10	110	-	-	120	96	-	-	96	-24	-	-	-	-
U Industrial Training Centre	10	342	-	-	352	236	37	-	273	-79	-	-	-	-
M St Heliers	-	230	-	-	230	184	-	5	189	-41	-	-	-	-
Glen Innes	-	124	-	-	124	154	-	-	154	30	-	-	-	-
Mannus	3	115	-	-	118	81	48	12	141	23	-	-	-	-
Oberon	7	72	-	-	79	80	-	-	80	1	-	-	-	-
Kirkconnell	6	186	-	-	192	70	60	-	130	-62	-	-	-	-
Junee (Minimum)	22	280	-	-	302	228	-	-	228	-74	-	-	183	-
John Morony	19	220	-	-	239	232	18	-	250	11	-	-	1	-
Cessnock	41	372	-	-	413	407	50	-	457	44	1	-	2	-
Malabar Fines Centre	-	39	-	-	39	-	50	-	50	11	-	-	-	-
<b>Sub-total</b>	<b>155</b>	<b>2696</b>	<b>16</b>	<b>118</b>	<b>2985</b>	<b>2181</b>	<b>723</b>	<b>45</b>	<b>2949</b>	<b>-36</b>	<b>1</b>	<b>0</b>	<b>186</b>	<b>0</b>
<b>TOTAL FULL-TIME</b>	<b>1128</b>	<b>4858</b>	<b>84</b>	<b>226</b>	<b>6296</b>	<b>5299</b>	<b>1028</b>	<b>88</b>	<b>6415</b>	<b>119</b>	<b>33</b>	<b>3</b>	<b>685</b>	<b>5</b>

\* Design accommodation in uncrowded conditions - amended 16th August, 1995.

N.W.R.=Non Work Release

\*\*Difference between number of beds in uncrowded conditions and number of inmates.

S=Sentenced inmates (not including appellants) U/S=Unsentenced inmates (including appellants, trials, remandees and deportees)

Included in the above figures are:

Number of fine defaulters (in gaol for no other reason)	69 M +	6 F =	75	(including 2 at Junee)
Number of inmates on appeal	410 M +	31 F =	441	(including 49 at Junee)
Number of inmates on remand or for trial	720 M +	53 F =	773	(including 64 at Junee)
Number of juveniles under 18 years	0 M +	0 F =	0	(including 0 at Junee)
Total full-time inmates =	5704 (at DOCS institutions)	+	592 (at Junee)	= 6296

**WEEKLY STATES FOR THE WEEK ENDING: 3RD DECEMBER, 1995**

PERIODIC DETAINEES (P.D.'S)	People with warrants			Attending			No.*	Beds*
	Stage1	Stage2	Total	Stage1	Stage2	Total	Beds	+/-
Campbelltown	93	14	107	55	12	67	52	-3
Grafton	45	20	65	25	19	44	50	25
Malabar	105	45	150	54	45	99	114	60
Malabar Mid-week	58	30	88	31	28	59	114	83
Parramatta	57	11	68	35	11	46	52	17
St Heliers	19	13	32	11	12	23	25	14
Silverwater	165	62	227	83	60	143	110	27
Silverwater Mid-week	134	58	192	67	58	125	110	43
Tomago	96	67	163	63	65	128	96	33
Windsor	89	25	114	57	23	80	60	3
Administration**	20	0	20	0	0	0	0	0
Administration Midweek	6	0	6	0	0	0	0	0
Wollongong	82	20	102	53	20	73	82	29
Mannus	12	8	20	5	8	13	24	19
<b>Total Males</b>	<b>981</b>	<b>373</b>	<b>1354</b>	<b>539</b>	<b>361</b>	<b>900</b>	<b>889</b>	<b>350</b>

Emu Plains	64	38	102	37	34	71	40	3
Administration**	1	0	1	0	0	0	0	0
Mannus	3	2	5	3	2	5	6	3
<b>Total Females</b>	<b>68</b>	<b>40</b>	<b>108</b>	<b>40</b>	<b>36</b>	<b>76</b>	<b>46</b>	<b>6</b>

<b>TOTAL P.D.'S</b>	<b>1049</b>	<b>413</b>	<b>1462</b>	<b>579</b>	<b>397</b>	<b>976</b>	<b>935</b>	<b>356</b>
---------------------	-------------	------------	-------------	------------	------------	------------	------------	------------

\* Number of free beds calculated on the numbers attending in Stage 1 and assuming uncrowded conditions.

Amended 16th August, 1995.

\*\* Administration Stage 1 comprises detainees who have failed to attend for more than 8 consecutive weeks.

Number of fine defaulters attending periodic detention = 4.

**The total number of people with warrants comprises:**

Number attending		900	76	976
Number in full-time custody	sentenced-one month or less	6 M +	0 F =	6
	sentenced-more than one month	7 M +	2 F =	9
	remand	16 M +	0 F =	16
Number on appeal with bail		3 M +	0 F =	3
Number absent - leave applied for	- sick	91 M +	11 F =	102
	- other	35 M +	5 F =	40
<b>Total absent - reasons known</b>		<b>158 M +</b>	<b>18 F =</b>	<b>176</b>
Number absent without leave	- no reason given	122 M +	6 F =	128
	- legal action pending	172 M +	8 F =	180
	- appealing Sec 25 cancellation	2 M +	0 F =	2
<b>Total absent without leave</b>		<b>296 M +</b>	<b>14 F =</b>	<b>310</b>
<b>Total number of people with warrants</b>		<b>1354 M +</b>	<b>108 F =</b>	<b>1462</b>

**WEEKLY STATES FOR THE WEEK ENDING:**

**3RD DECEMBER, 1995**

	Full-time Inmates		All Inmates Full-time + PD	
	No.	Date	No.	Date
Highest weekly state, year ending previous week	6424	9/7/95	7877#	19/11/95
Lowest weekly state, year ending previous week	6110	29/1/95	7464	29/1/95
State for previous week	6336	26/11/95	7804	26/11/95
<b>State for this week</b>	<b>6296</b>	<b>3/12/95</b>	<b>7758</b>	<b>3/12/95</b>

# Preliminary Figure

\*\*\*\*\* Research & Statistics \*\*\*\*\*

**WEEKLY STATES AT MIDNIGHT ON: 7TH JANUARY, 1996**

FULL-TIME INMATES	INMATES					*Accommodation in				Beds +/- **	Segregation		Protection	
	Males		Females		Total	Single Cells	Multi Cells	Dorm	Total Beds		M	F	M	F
	U/S	S	U/S	S										
Goulburn (Main)	42	323	-	-	365	314	55	-	369	4	12	-	43	-
Maitland	40	81	-	-	121	78	56	-	134	13	6	-	57	-
Long Bay Complex														
- Special Purpose Centre	9	30	-	3	42	51	-	-	51	9	-	-	-	-
- L. B. Development Unit	4	1	-	-	5	9	-	-	9	4	-	-	-	-
M - L. B. Hospital - Med.	7	16	-	-	23	16	12	-	28	5	-	-	-	-
A - L. B. Hospital - Psych.	31	54	-	-	85	84	-	-	84	-1	-	-	-	-
X - Prince Henry Annexe	1	4	-	-	5	-	-	7	7	2	-	-	-	-
I - Reception & Induction	66	123	-	-	189	410	2	-	412	223	-	-	84	-
M - Special Care C. C.														
U - Special Care Unit	-	18	-	-	18	27	-	-	27	9	-	-	-	-
M - Crisis Support Unit	1	8	-	-	9	-	18	-	18	9	-	-	-	-
- Lifestyles Unit	1	7	-	-	8	-	8	-	8	0	-	-	-	-
- Remand Centre	335	23	-	-	358	216	2	8	226	-132	12	-	57	-
Lithgow	61	221	-	-	282	298	-	-	298	16	2	-	36	-
<b>Sub-total</b>	<b>598</b>	<b>909</b>	<b>0</b>	<b>3</b>	<b>1510</b>	<b>1503</b>	<b>153</b>	<b>15</b>	<b>1671</b>	<b>161</b>	<b>32</b>	<b>0</b>	<b>277</b>	<b>0</b>
Bathurst (Main)	49	176	-	-	225	220	4	-	224	-1	2	-	13	-
M Broken Hill	9	35	-	1	45	14	14	-	28	-17	-	-	-	-
E Cooma	18	136	-	-	154	112	-	8	120	-34	-	-	-	-
D Grafton (Main)	31	93	3	5	132	42	-	12	54	-78	-	-	1	-
I Mulawa	-	-	67	106	173	162	52	8	222	49	-	-	-	6
U Parramatta	189	182	-	-	371	292	-	-	292	-79	1	-	-	-
M Parklea N.W.R.	83	192	-	-	290	405	-	-	405	115	2	-	-	-
- Work Release	-	15	-	-	-	-	-	-	-	-	-	-	-	-
Junee (Medium)	34	256	-	-	290	368	16	-	384	94	3	-	218	-
Tamworth	14	17	-	-	31	-	66	-	66	35	-	-	1	-
<b>Sub-total</b>	<b>427</b>	<b>1102</b>	<b>70</b>	<b>112</b>	<b>1711</b>	<b>1615</b>	<b>152</b>	<b>28</b>	<b>1795</b>	<b>84</b>	<b>8</b>	<b>0</b>	<b>233</b>	<b>6</b>
Berrima	4	59	-	-	63	57	4	-	61	-2	-	-	-	-
Emu Plains N.W.R.	-	-	11	49	63	116	2	-	118	55	-	-	-	-
- Work Release	-	-	-	3	-	-	-	-	-	-	-	-	-	-
Norma Parker N.W.R.	-	-	8	36	53	16	46	28	90	37	-	-	-	-
- Work Release	-	-	-	9	-	-	-	-	-	-	-	-	-	-
M Silverwater N.W.R.	19	243	-	-	381	45	408	-	453	72	-	-	-	-
I - Work Release	2	117	-	-	-	-	-	-	-	-	-	-	-	-
N Goulburn (X-Wing)	8	100	-	-	108	90	-	-	90	-18	-	-	-	-
I Bathurst (X-Wing)	4	87	-	-	91	89	-	-	89	-2	-	-	-	-
M Grafton (C-Unit)	10	110	-	-	120	96	-	-	96	-24	-	-	-	-
U Industrial Training Centre	10	353	-	-	363	236	37	-	273	-90	-	-	-	-
M St Heliers	-	214	-	-	214	184	-	5	189	-25	-	-	-	-
Glen Innes	-	125	-	-	125	154	-	-	154	29	-	-	-	-
Mannus	3	120	-	-	123	81	48	12	141	18	-	-	-	-
Oberon	4	75	-	-	79	80	-	-	80	1	-	-	-	-
Kirkconnell	10	182	-	-	192	70	60	-	130	-62	-	-	-	-
Junee (Minimum)	30	263	-	-	293	228	-	-	228	-65	-	-	182	-
John Morony	17	212	-	-	229	232	18	-	250	21	-	-	1	-
Cessnock	49	367	-	-	416	407	50	-	457	41	1	-	2	-
Malabar PDC	-	41	-	-	41	-	50	-	50	9	-	-	-	-
<b>Sub-total</b>	<b>170</b>	<b>2668</b>	<b>19</b>	<b>97</b>	<b>2954</b>	<b>2181</b>	<b>723</b>	<b>45</b>	<b>2949</b>	<b>-5</b>	<b>1</b>	<b>0</b>	<b>185</b>	<b>0</b>
<b>TOTAL FULL-TIME</b>	<b>1195</b>	<b>4679</b>	<b>89</b>	<b>212</b>	<b>6175</b>	<b>5299</b>	<b>1028</b>	<b>88</b>	<b>6415</b>	<b>240</b>	<b>41</b>	<b>0</b>	<b>695</b>	<b>6</b>

\* Design accommodation in uncrowded conditions - amended 16th August, 1995.

N.W.R.=Non Work Release

\*\*Difference between number of beds in uncrowded conditions and number of inmates.

S=Sentenced inmates (not including appellants) U/S=Unsentenced inmates (including appellants, trials, remandees and deportees) included in the above figures are:

Number of fine defaulters (in gaol for no other reason)	76 M +	4 F =	80	(including 1 at Junee)
Number of inmates on appeal	438 M +	34 F =	472	(including 52 at Junee)
Number of inmates on remand or for trial	751 M +	55 F =	806	(including 12 at Junee)
Number of juveniles under 18 years	0 M +	0 F =	0	(including 0 at Junee)
Total full-time inmates =	5592 (at DOCS institutions)	+	583 (at Junee)	= 6175



**WEEKLY STATES FOR THE WEEK ENDING: 7TH JANUARY, 1996**

PERIODIC DETAINEES (P.D.'S)	People with warrants			Attending			No.*	Beds*
	Stage1	Stage2	Total	Stage1	Stage2	Total	Beds	+/-
Campbelltown	92	17	109	58	17	75	52	-6
Grafton	43	26	69	24	22	46	50	26
Malabar	95	36	131	46	32	78	114	68
Malabar Mid-week	66	28	94	27	23	50	114	87
Parramatta	60	14	74	37	11	48	52	15
St Heliers	21	8	29	16	8	24	25	9
Silverwater	149	65	214	80	59	139	110	30
Silverwater Mid-week	144	54	198	53	48	101	110	57
Tomago	91	77	168	54	76	130	96	42
Windsor	98	28	126	56	28	84	60	4
Administration**	22	0	22	0	0	0	0	0
Administration Midweek	8	0	8	0	0	0	0	0
Wollongong	78	24	102	49	23	72	82	33
Mannus	15	10	25	11	10	21	24	13
<b>Total Males</b>	<b>982</b>	<b>387</b>	<b>1369</b>	<b>511</b>	<b>357</b>	<b>868</b>	<b>889</b>	<b>378</b>

Emu Plains	60	39	99	41	34	75	40	-1
Administration**	1	0	1	0	0	0	0	0
Mannus	3	1	4	3	1	4	6	3
<b>Total Females</b>	<b>64</b>	<b>40</b>	<b>104</b>	<b>44</b>	<b>35</b>	<b>79</b>	<b>46</b>	<b>2</b>

<b>TOTAL P.D.'S</b>	<b>1046</b>	<b>427</b>	<b>1473</b>	<b>555</b>	<b>392</b>	<b>947</b>	<b>935</b>	<b>380</b>
---------------------	-------------	------------	-------------	------------	------------	------------	------------	------------

\* Number of free beds calculated on the numbers attending in Stage 1 and assuming uncrowded conditions.

Amended 16th August, 1995.

\*\* Administration Stage 1 comprises detainees who have failed to attend for more than 8 consecutive weeks.

Number of fine defaulters attending periodic detention = 6.

**The total number of people with warrants comprises:**

Number attending		868	79	947
Number in full-time custody	sentenced-one month or less	3 M +	0 F =	3
	sentenced-more than one month	9 M +	0 F =	9
	remand	17 M +	1 F =	18
Number on appeal with bail		2 M +	0 F =	2
Number absent - leave applied for	- sick	105 M +	10 F =	115
	- other	39 M +	2 F =	41
<b>Total absent - reasons known</b>		<b>175 M +</b>	<b>13 F =</b>	<b>188</b>
Number absent without leave	- no reason given	148 M +	6 F =	154
	- legal action pending	178 M +	6 F =	184
	- appealing Sec 25 cancellation	0 M +	0 F =	0
<b>Total absent without leave</b>		<b>326 M +</b>	<b>12 F =</b>	<b>338</b>
<b>Total number of people with warrants</b>		<b>1369 M +</b>	<b>104 F =</b>	<b>1473</b>

**WEEKLY STATES FOR THE WEEK ENDING:**

**7TH JANUARY, 1996**

	Full-time Inmates		All Inmates Full-time + PD	
	No.	Date	No.	Date
Highest weekly state, year ending previous week	6424	9/7/95	7877#	19/11/95
Lowest weekly state, year ending previous week	6110	29/1/95	7464	29/1/95
State for previous week	6169	31/12/95	7650	31/12/95
<b>State for this week</b>	<b>6175</b>	<b>7/1/96</b>	<b>7648</b>	<b>7/1/96</b>

# Preliminary figure

\*\*\*\*\* Research & Statistics \*\*\*\*\*

WEEKLY STATES AT MIDNIGHT ON: 4TH FEBRUARY, 1996

FULL-TIME INMATES	INMATES				Total	*Accommodation in				Beds +/- **	Segregation		Protection	
	Males		Females			Single Cells	Multi Cells	Dorm	Total Beds		M	F	M	F
	U/S	S	U/S	S										
Goulburn (Main)	47	303	-	-	350	314	55	-	369	19	10	-	44	-
Maitland	49	74	-	-	123	78	56	-	134	11	4	-	63	-
Long Bay Complex														
- Special Purpose Centre	7	27	-	2	36	51	-	-	51	15	-	-	-	-
- L. B. Development Unit	5	4	-	-	9	9	-	-	9	0	-	-	-	-
M - L. B. Hospital - Med.	10	16	-	-	26	16	12	-	28	2	-	-	-	-
A - L. B. Hospital - Psych.	27	57	-	-	84	84	-	-	84	0	-	-	-	-
X - Prince Henry Annexe	1	4	-	-	5	-	-	7	7	2	-	-	-	-
I - Reception & Induction	65	155	-	-	220	410	2	-	412	192	-	-	90	-
M - Special Care C. C.														
U - Special Care Unit	-	16	-	-	16	27	-	-	27	11	-	-	-	-
M - Crisis Support Unit	1	6	-	-	7	-	18	-	18	11	-	-	-	-
- Lifestyles Unit	-	7	-	-	7	-	8	-	8	1	-	-	-	-
- Remand Centre	333	21	-	-	354	216	2	8	226	-128	10	-	57	-
Lithgow	55	227	-	-	282	298	-	-	298	16	3	-	36	-
<b>Sub-total</b>	<b>600</b>	<b>917</b>	<b>0</b>	<b>2</b>	<b>1519</b>	<b>1503</b>	<b>153</b>	<b>15</b>	<b>1671</b>	<b>152</b>	<b>27</b>	<b>0</b>	<b>290</b>	<b>0</b>
Bathurst (Main)	39	176	-	-	215	220	4	-	224	9	-	-	12	-
M Broken Hill	9	35	-	1	45	14	14	-	28	-17	-	-	1	-
E Cooma	18	136	-	-	154	112	-	8	120	-34	-	-	-	-
D Grafton (Main)	34	100	2	4	140	42	-	12	54	-86	1	-	2	-
I Mulawa	-	-	67	103	170	162	52	8	222	52	-	-	-	9
U Parramatta	171	227	-	-	398	292	-	-	292	-106	5	-	-	-
M Parklea N.W.R.	75	181	-	-	280	405	-	-	405	125	1	-	-	-
- Work Release	-	24	-	-										
Junee (Medium)	43	228	-	-	271	368	16	-	384	113	2	-	207	-
Tamworth	21	10	-	-	31	-	66	-	66	35	-	-	2	-
<b>Sub-total</b>	<b>410</b>	<b>1117</b>	<b>69</b>	<b>108</b>	<b>1704</b>	<b>1615</b>	<b>152</b>	<b>28</b>	<b>1795</b>	<b>91</b>	<b>9</b>	<b>0</b>	<b>224</b>	<b>9</b>
Berrima	1	60	-	-	61	57	4	-	61	0	-	-	1	-
Emu Plains N.W.R.	-	-	13	59	74	116	2	-	118	44	-	-	-	-
- Work Release	-	-	-	2										
Norma Parker N.W.R.	-	-	8	29	48	16	46	28	90	42	-	-	-	-
- Work Release	-	-	-	11										
M Silverwater N.W.R.	27	244	-	-	376	45	408	-	453	77	-	-	1	-
I - Work Release	1	104	-	-										
N Goulburn (X-Wing)	12	100	-	-	112	90	-	-	90	-22	-	-	-	-
I Bathurst (X-Wing)	7	88	-	-	95	89	-	-	89	-6	-	-	-	-
M Grafton (C-Unit)	11	109	-	-	120	96	-	-	96	-24	-	-	-	-
U Industrial Training Centre	9	358	-	-	367	236	37	-	273	-94	-	-	-	-
M St Heliers	-	198	-	-	198	184	-	5	189	-9	1	-	-	-
Glen Innes	-	106	-	-	106	154	-	-	154	48	-	-	-	-
Mannus	1	112	-	-	113	81	48	12	141	28	-	-	1	-
Oberon	5	70	-	-	75	80	-	-	80	5	-	-	-	-
Kirkconnell	9	190	-	-	199	70	60	-	130	-69	-	-	-	-
Junee (Minimum)	30	274	-	-	304	228	-	-	228	-76	2	-	183	-
John Morony	15	215	-	-	230	232	18	-	250	20	-	-	1	-
Cessnock	45	365	-	-	410	407	50	-	457	47	-	-	4	-
Malabar PDC	-	31	-	-	31	-	50	-	50	19	-	-	-	-
<b>Sub-total</b>	<b>173</b>	<b>2624</b>	<b>21</b>	<b>101</b>	<b>2919</b>	<b>2181</b>	<b>723</b>	<b>45</b>	<b>2949</b>	<b>30</b>	<b>3</b>	<b>0</b>	<b>191</b>	<b>0</b>
<b>TOTAL FULL-TIME</b>	<b>1183</b>	<b>4658</b>	<b>90</b>	<b>211</b>	<b>6142</b>	<b>5299</b>	<b>1028</b>	<b>88</b>	<b>6415</b>	<b>273</b>	<b>39</b>	<b>0</b>	<b>705</b>	<b>9</b>

\* Design accommodation in uncrowded conditions - amended 16th August, 1995.

N.W.R.=Non Work Release

\*\*Difference between number of beds in uncrowded conditions and number of inmates.

≡=Sentenced inmates (not including appellants) U/S=Unsentenced inmates (including appellants, trials, remandees and deportees) included in the above figures are:

Number of fine defaulters (in gaol for no other reason)	74 M +	9 F =	83	(including 3 at Junee)
Number of inmates on appeal	436 M +	36 F =	472	(including 53 at Junee)
Number of inmates on remand or for trial	745 M +	54 F =	799	(including 20 at Junee)
Number of juveniles under 18 years	0 M +	0 F =	0	(including 0 at Junee)
Total full-time inmates =	5567 (at DOCS institutions)	+	575 (at Junee)	= 6142

**WEEKLY STATES FOR THE WEEK ENDING: 4TH FEBRUARY, 1996**

PERIODIC DETAINEES (P.D.'S)	People with warrants			Attending			No.*	Beds*
	Stage1	Stage2	Total	Stage1	Stage2	Total	Beds	+/-
Campbelltown	87	15	102	54	15	69	68	14
Grafton	41	29	70	24	28	52	50	26
Malabar	85	33	118	41	30	71	114	73
Malabar Mid-week	67	25	92	40	23	63	114	74
Parramatta	57	13	70	39	12	51	52	13
St Heliers	19	7	26	14	7	21	25	11
Silverwater	147	71	218	74	64	138	110	36
Silverwater Mid-week	131	60	191	53	57	110	110	57
Tomago	91	80	171	55	77	132	96	41
Windsor	95	22	117	56	19	75	60	4
Administration**	20	0	20	0	0	0	0	0
Administration Midweek	9	0	9	0	0	0	0	0
Wollongong	77	26	103	45	25	70	82	37
Mannus	17	10	27	9	10	19	24	15
<b>Total Males</b>	<b>943</b>	<b>391</b>	<b>1334</b>	<b>504</b>	<b>367</b>	<b>871</b>	<b>905</b>	<b>401</b>

Emu Plains	58	38	96	31	30	61	40	9
Administration**	1	0	1	0	0	0	0	0
Mannus	2	2	4	2	2	4	6	4
<b>Total Females</b>	<b>61</b>	<b>40</b>	<b>101</b>	<b>33</b>	<b>32</b>	<b>65</b>	<b>46</b>	<b>13</b>

<b>TOTAL P.D.'S</b>	<b>1004</b>	<b>431</b>	<b>1435</b>	<b>537</b>	<b>399</b>	<b>936</b>	<b>951</b>	<b>414</b>
---------------------	-------------	------------	-------------	------------	------------	------------	------------	------------

\* Number of free beds calculated on the numbers attending in Stage 1 and assuming uncrowded conditions.

Amended 3rd September, 1995.

\*\* Administration Stage 1 comprises detainees who have failed to attend for more than 8 consecutive weeks.

Number of fine defaulters attending periodic detention = 4.

The total number of people with warrants comprises:

Number attending		871	65	936
Number in full-time custody	sentenced-one month or less	6 M +	0 F =	6
	sentenced-more than one month	11 M +	0 F =	11
	remand	20 M +	2 F =	22
Number on appeal with bail		2 M +	0 F =	2
Number absent - leave applied for	- sick	77 M +	15 F =	92
	- other	32 M +	4 F =	36
<b>Total absent - reasons known</b>		<b>148 M +</b>	<b>21 F =</b>	<b>169</b>
Number absent without leave	- no reason given	130 M +	7 F =	137
	- legal action pending	184 M +	8 F =	192
	- appealing Sec 25 cancellation	1 M +	0 F =	1
<b>Total absent without leave</b>		<b>315 M +</b>	<b>15 F =</b>	<b>330</b>
<b>Total number of people with warrants</b>		<b>1334 M +</b>	<b>101 F =</b>	<b>1435</b>

**WEEKLY STATES FOR THE WEEK ENDING: 4TH FEBRUARY, 1996**

	Full-time Inmates		All Inmates Full-time + PD	
	No.	Date	No.	Date
Highest weekly state, year ending previous week	6424	9/7/95	7877	19/11/95
Lowest weekly state, year ending previous week	6110	29/1/95	7464	29/1/95
State for previous week	6021	28/1/96	7647	28/1/96
<b>State for this week</b>	<b>6142</b>	<b>4/2/96</b>	<b>7577</b>	<b>4/2/96</b>

\*\*\*\*\* Research & Statistics \*\*\*\*\*

**WEEKLY STATES AT MIDNIGHT ON: 3RD MARCH, 1996**

FULL-TIME INMATES	INMATES					*Accommodation in				Beds +/- **	Segregation		Protection	
	Males		Females		Total	Single Cells	Multi Cells	Dorm	Total Beds		M	F	M	F
	U/S	S	U/S	S										
Goulburn (Main)	38	297	-	-	335	314	55	-	369	34	13	-	40	-
Maitland	45	76	-	-	121	78	56	-	134	13	4	-	59	-
Long Bay Complex														
- Special Purpose Centre	7	27	-	2	36	51	-	-	51	15	-	-	-	-
- L. B. Development Unit	3	5	-	-	8	9	-	-	9	1	-	-	-	-
M - L. B. Hospital - Med.	4	20	-	-	24	16	12	-	28	4	-	-	-	-
A - L. B. Hospital - Psych.	30	55	-	-	85	84	-	-	84	-1	-	-	-	-
X - Prince Henry Annexe	-	1	-	-	1	-	-	7	7	6	-	-	-	-
I - Reception & Induction	67	164	-	-	231	410	2	-	412	181	-	-	90	-
M - Special Care C. C.														
U - Special Care Unit	-	16	-	-	16	27	-	-	27	11	-	-	-	-
M - Crisis Support Unit	-	6	-	-	6	-	18	-	18	12	-	-	-	-
- Lifestyles Unit	-	8	-	-	8	-	8	-	8	0	-	-	-	-
- Remand Centre	331	22	-	-	353	216	2	8	226	-127	12	-	55	-
Lithgow	51	232	-	-	283	298	-	-	298	15	1	-	35	-
<b>Sub-total</b>	<b>576</b>	<b>929</b>	<b>0</b>	<b>2</b>	<b>1507</b>	<b>1503</b>	<b>153</b>	<b>15</b>	<b>1671</b>	<b>164</b>	<b>30</b>	<b>0</b>	<b>279</b>	<b>0</b>
M Bathurst (Main)	39	179	-	1	219	220	4	-	224	5	1	-	10	-
E Broken Hill	5	32	-	-	37	14	14	-	28	-9	-	-	1	-
D Cooma	15	141	-	-	156	112	-	8	120	-36	-	-	-	-
I Grafton (Main)	39	93	1	4	137	42	-	12	54	-83	2	-	2	-
U Mulawa	-	-	71	123	194	162	52	8	222	28	-	2	-	14
M Parramatta	170	224	-	-	394	292	-	-	292	-102	1	-	1	-
M Parklea N.W.R.	84	179	-	-	274	405	-	-	405	131	-	-	-	-
- Work Release	-	11	-	-										
June (Medium)	43	232	-	-	275	368	16	-	384	109	1	-	207	-
Tamworth	8	23	-	-	31	-	66	-	66	35	-	-	1	-
<b>Sub-total</b>	<b>403</b>	<b>1114</b>	<b>72</b>	<b>128</b>	<b>1717</b>	<b>1615</b>	<b>152</b>	<b>28</b>	<b>1795</b>	<b>78</b>	<b>5</b>	<b>2</b>	<b>222</b>	<b>14</b>
M Berrima	2	59	-	-	61	57	4	-	61	0	-	-	-	-
Emu Plains N.W.R.	-	-	9	64	75	116	2	-	118	43	-	-	-	-
- Work Release	-	-	-	2										
Norma Parker N.W.R.	-	-	8	33	49	16	46	28	90	41	-	-	-	-
- Work Release	-	-	-	8										
M Silverwater N.W.R.	25	246	-	-	368	45	408	-	453	85	-	-	-	-
I - Work Release	1	96	-	-										
N Goulburn (X-Wing)	12	97	-	-	109	90	-	-	90	-19	-	-	-	-
I Bathurst (X-Wing)	3	89	-	-	92	89	-	-	89	-3	-	-	-	-
M Grafton (C-Unit)	9	110	-	-	119	96	-	-	96	-23	-	-	-	-
U Industrial Training Centre	-	367	-	-	367	236	37	-	273	-94	-	-	-	-
M St Heliers	-	225	-	-	225	184	-	5	189	-36	-	-	-	-
Glen Innes	-	120	-	-	120	154	-	-	154	34	1	-	-	-
Mannus	3	122	-	-	125	81	48	12	141	16	-	-	1	-
Oberon	8	73	-	-	81	80	-	-	80	-1	-	-	-	-
Kirkconnell	12	182	-	-	194	70	60	-	130	-64	-	-	-	-
June (Minimum)	26	268	-	-	294	228	-	-	228	-66	-	-	231	-
John Morony	18	208	-	-	226	232	18	-	250	24	-	-	1	-
Cessnock	38	374	-	-	412	407	50	-	457	45	-	-	4	-
Malabar PDC	-	34	-	-	34	-	50	-	50	16	-	-	-	-
<b>Sub-total</b>	<b>157</b>	<b>2670</b>	<b>17</b>	<b>107</b>	<b>2951</b>	<b>2181</b>	<b>723</b>	<b>45</b>	<b>2949</b>	<b>-2</b>	<b>1</b>	<b>0</b>	<b>237</b>	<b>0</b>
<b>TOTAL FULL-TIME</b>	<b>1136</b>	<b>4713</b>	<b>89</b>	<b>237</b>	<b>6175</b>	<b>5299</b>	<b>1028</b>	<b>88</b>	<b>6415</b>	<b>240</b>	<b>36</b>	<b>2</b>	<b>738</b>	<b>14</b>

\* Design accommodation in uncrowded conditions - amended 16th August, 1995.

N.W.R.=Non Work Release

\*\*Difference between number of beds in uncrowded conditions and number of inmates.

S=Sentenced inmates (not including appellants) U/S=Unsentenced inmates (including appellants, trials, remandees and deportees)

included in the above figures are:

Number of fine defaulters (in gaol for no other reason) 82 M + 11 F = 93 (including 2 at June)

Number of inmates on appeal 414 M + 34 F = 448 (including 50 at June)

Number of inmates on remand or for trial 719 M + 55 F = 774 (including 19 at June)

Number of juveniles under 18 years 0 M + 0 F = 0 (including 0 at June)

Total full-time inmates = 5606 (at DOCS institutions) + 569 (at June) = 6175

**WEEKLY STATES FOR THE WEEK ENDING: 3RD MARCH, 1996**

**PERIODIC**

**DETAINEES (P.D.'S)**

	People with warrants			Attending			No.*	Beds*
	Stage1	Stage2	Total	Stage1	Stage2	Total	Beds	+/-
Campbelltown	97	14	111	62	13	75	68	6
Grafton	43	28	71	24	28	52	50	26
Malabar	83	35	118	40	33	73	114	74
Malabar Mid-week	58	26	84	29	25	54	114	85
Parramatta	57	15	72	39	12	51	52	13
St Heliers	18	8	26	12	7	19	25	13
Silverwater	149	71	220	68	69	137	110	42
Silverwater Mid-week	124	54	178	46	48	94	110	64
Tomago	100	76	176	60	71	131	96	36
Windsor	88	19	107	52	18	70	60	8
Administration**	20	0	20	0	0	0	0	0
Administration Midweek	10	0	10	0	0	0	0	0
Wollongong	74	29	103	41	29	70	82	41
Mannus	20	7	27	17	6	23	24	7
<b>Total Males</b>	<b>941</b>	<b>382</b>	<b>1323</b>	<b>490</b>	<b>359</b>	<b>849</b>	<b>905</b>	<b>415</b>

Emu Plains	54	37	91	21	32	53	40	19
Administration**	1	0	1	0	0	0	0	0
Mannus	2	2	4	2	2	4	6	4
<b>Total Females</b>	<b>57</b>	<b>39</b>	<b>96</b>	<b>23</b>	<b>34</b>	<b>57</b>	<b>46</b>	<b>23</b>

<b>TOTAL P.D.'S</b>	<b>998</b>	<b>421</b>	<b>1419</b>	<b>513</b>	<b>393</b>	<b>906</b>	<b>951</b>	<b>438</b>
---------------------	------------	------------	-------------	------------	------------	------------	------------	------------

\* Number of free beds calculated on the numbers attending in Stage 1 and assuming uncrowded conditions.

Amended 3rd September, 1995.

\*\* Administration Stage 1 comprises detainees who have failed to attend for more than 8 consecutive weeks.

Number of fine defaulters attending periodic detention = 3.

**The total number of people with warrants comprises:**

Number attending		849	57	906
Number in full-time custody	sentenced-one month or less	5 M +	0 F =	5
	sentenced-more than one month	5 M +	1 F =	6
	remand	24 M +	1 F =	25
Number on appeal with bail		1 M +	0 F =	1
Number absent - leave applied for	- sick	78 M +	18 F =	96
	- other	43 M +	4 F =	47
<b>Total absent - reasons known</b>		<b>156 M +</b>	<b>24 F =</b>	<b>180</b>
Number absent without leave	- no reason given	129 M +	3 F =	132
	- legal action pending	189 M +	12 F =	201
	- appealing Sec 25 cancellation	0 M +	0 F =	0
<b>Total absent without leave</b>		<b>318 M +</b>	<b>15 F =</b>	<b>333</b>
<b>Total number of people with warrants</b>		<b>1323 M +</b>	<b>96 F =</b>	<b>1419</b>

**WEEKLY STATES FOR THE WEEK ENDING: 3RD MARCH, 1996**

	Full-time Inmates		All Inmates Full-time + PD	
	No.	Date	No.	Date
Highest weekly state, year ending previous week	6424	9/7/95	7877	19/11/95
Lowest weekly state, year ending previous week	6142	4/2/96	7552	5/3/95
State for previous week (amended figure)	6180	25/2/96	7605	25/2/96
<b>State for this week</b>	<b>6175</b>	<b>3/3/96</b>	<b>7594</b>	<b>3/3/96</b>

\*\*\*\*\* Research & Statistics \*\*\*\*\*

WEEKLY STATES AT MIDNIGHT ON: 7TH APRIL, 1996

FULL-TIME INMATES	INMATES					*Accommodation in				Beds +/- **	Segregation		Protection	
	Males		Females		Total	Single Cells	Multi Cells	Dorm	Total Beds		M	F	M	F
	U/S	S	U/S	S										
Goulburn (Main)	43	298	-	-	341	314	55	-	369	28	8	-	36	-
Maitland	46	79	-	-	125	78	56	-	134	9	3	-	63	-
Long Bay Complex														
- Special Purpose Centre	7	31	-	2	40	51	-	-	51	11	-	-	-	-
- L. Bay D.D. Unit	5	4	-	-	9	9	-	-	9	0	-	-	-	-
M - L. Bay Hospital - Med.	8	14	1	-	23	16	12	-	28	5	-	-	-	-
A - L. Bay Hospital - Psych.	32	53	-	-	85	84	-	-	84	-1	-	-	-	-
X - Prince Henry Annexe	-	3	-	-	3	-	-	7	7	4	-	-	-	-
I - Reception & Induction	81	144	-	-	225	410	2	-	412	187	-	-	82	-
M - Special Care C. C.														
U - Special Care Unit	-	14	-	-	14	27	-	-	27	13	-	-	-	-
M - Crisis Support Unit	1	8	-	-	9	-	18	-	18	9	-	-	-	-
- Lifestyles Unit	-	5	-	-	5	-	8	-	8	3	-	-	-	-
- Remand Centre	329	24	-	-	353	216	2	8	226	-127	12	-	55	-
Lithgow	48	232	-	-	280	298	-	-	298	18	3	-	26	-
<b>Sub-total</b>	<b>600</b>	<b>909</b>	<b>1</b>	<b>2</b>	<b>1512</b>	<b>1503</b>	<b>153</b>	<b>15</b>	<b>1671</b>	<b>159</b>	<b>26</b>	<b>0</b>	<b>262</b>	<b>0</b>
Bathurst (Main)	46	181	-	-	227	220	4	-	224	-3	-	-	7	-
M Broken Hill	6	33	-	1	40	14	14	-	28	-12	-	-	2	-
E Cooma	20	132	-	-	152	112	-	8	120	-32	-	-	-	-
D Grafton (Main)	26	99	2	1	128	42	-	12	54	-74	1	-	-	-
I Mulawa	-	-	70	124	194	162	52	8	222	28	-	-	-	14
U Parramatta	183	215	-	-	398	292	-	-	292	-106	-	-	1	-
M Parklea N.W.R.	73	186	-	-	259	314	-	-	314	55	4	-	1	-
June (Medium)	52	234	-	-	286	368	16	-	384	98	1	-	234	-
Tamworth	11	17	-	-	28	-	66	-	66	38	-	-	1	-
<b>Sub-total</b>	<b>417</b>	<b>1097</b>	<b>72</b>	<b>126</b>	<b>1712</b>	<b>1524</b>	<b>152</b>	<b>28</b>	<b>1704</b>	<b>-8</b>	<b>6</b>	<b>0</b>	<b>246</b>	<b>14</b>
Berrima	3	58	-	-	61	57	4	-	61	0	-	-	-	-
Emu Plains N.W.R.	-	-	11	65	78	116	2	-	118	40	-	-	-	-
- Work Release	-	-	-	2										
Norma Parker N.W.R.	-	-	8	34	49	16	46	28	90	41	-	-	-	-
- Work Release	-	-	-	7										
M Silverwater N.W.R.	38	234	-	-	382	45	408	-	453	71	-	-	-	-
I - Work Release	1	109	-	-										
N Parklea Work Release	-	13	-	-	13	91	-	-	91	78	-	-	-	-
I Goulburn (X-Wing)	11	97	-	-	108	90	-	-	90	-18	-	-	-	-
M Bathurst (X-Wing)	3	90	-	-	93	89	-	-	89	-4	-	-	-	-
U Grafton (C-Unit)	10	110	-	-	120	96	-	-	96	-24	-	-	-	-
M Industrial Training Centre	-	352	-	-	352	236	37	-	273	-79	-	-	-	-
St Heliers	-	218	-	-	218	184	-	5	189	-29	-	-	-	-
St Heliers Mobile Camp	-	8	-	-	8	15	-	-	15	7	-	-	-	-
Glen Innes	-	117	-	-	117	154	-	-	154	37	-	-	-	-
Mannus	7	114	-	-	121	81	48	12	141	20	-	-	-	-
Oberon	6	74	-	-	80	80	-	-	80	0	-	-	-	-
Kirkconnell	9	188	-	-	197	70	60	-	130	-67	-	-	1	-
June (Minimum)	21	275	-	-	296	228	-	-	228	-68	1	-	180	-
John Morony	17	217	-	-	234	232	18	-	250	16	1	-	1	-
Cessnock	46	381	-	-	427	407	50	-	457	30	-	-	-	-
Malabar PDC	-	33	-	-	33	-	50	-	50	17	-	-	-	-
<b>Sub-total</b>	<b>172</b>	<b>2688</b>	<b>19</b>	<b>108</b>	<b>2987</b>	<b>2287</b>	<b>723</b>	<b>45</b>	<b>3055</b>	<b>68</b>	<b>2</b>	<b>0</b>	<b>182</b>	<b>0</b>
<b>TOTAL FULL-TIME</b>	<b>1189</b>	<b>4694</b>	<b>92</b>	<b>236</b>	<b>6211</b>	<b>5314</b>	<b>1028</b>	<b>88</b>	<b>6430</b>	<b>219</b>	<b>34</b>	<b>0</b>	<b>690</b>	<b>14</b>

\* Design accommodation in uncrowded conditions - amended 6th March, 1996.

N.W.R.=Non Work Release

\*\*Difference between number of beds in uncrowded conditions and number of inmates.

S=Sentenced inmates (not including appellants) U/S=Unsentenced inmates (including appellants, trials, remandees and deportees)

\*\*\* RESEARCH & STATISTICS UNIT \*\*\*

WEEKLY STATES FOR THE WEEK ENDING: 7TH APRIL, 1996

PERIODIC DETAINEES (P.D.'S)	People with warrants			Attending			No.* Beds	Beds* +/-
	Stage1	Stage2	Total	Stage1	Stage2	Total		
Campbelltown	0	0	0	0	0	0	68	68
Grafton	0	0	0	0	0	0	50	50
Malabar	0	0	0	0	0	0	114	114
Malabar Mid-week	0	0	0	0	0	0	114	114
Parramatta	0	0	0	0	0	0	52	52
St Heliers	0	0	0	0	0	0	25	25
Silverwater	0	0	0	0	0	0	110	110
Silverwater Mid-week	0	0	0	0	0	0	110	110
Tomago	0	0	0	0	0	0	96	96
Windsor	0	0	0	0	0	0	60	60
Administration**	0	0	0	0	0	0	0	0
Administration Midweek	0	0	0	0	0	0	0	0
Wollongong	0	0	0	0	0	0	82	82
Mannus	0	0	0	0	0	0	24	24
<b>Total Males</b>	<b>0</b>	<b>0</b>	<b>0#</b>	<b>0</b>	<b>0</b>	<b>0#</b>	<b>905</b>	<b>905</b>

Emu Plains	0	0	0	0	0	0	40	40
Administration**	0	0	0	0	0	0	0	0
Mannus	0	0	0	0	0	0	6	6
<b>Total Females</b>	<b>0</b>	<b>0</b>	<b>0#</b>	<b>0</b>	<b>0</b>	<b>0#</b>	<b>46</b>	<b>46</b>

<b>TOTAL P.D.'S</b>	<b>0</b>	<b>0</b>	<b>0#</b>	<b>0</b>	<b>0</b>	<b>0#</b>	<b>951</b>	<b>951</b>
---------------------	----------	----------	-----------	----------	----------	-----------	------------	------------

\* Number of free beds calculated on the numbers attending in Stage 1 and assuming uncrowded conditions.

Amended 3rd September, 1995.

\*\* Administration Stage 1 comprises detainees who have failed to attend for more than 8 consecutive weeks.

Number of fine defaulters attending periodic detention = 0.

# All PDCs were closed over Easter.

**The total number of people with warrants comprises:**

Number attending		0#	0#	0#
Number in full-time custody				
	sentenced-one month or less	M +	F =	0
	sentenced-more than one month	M +	F =	0
	remand	M +	F =	0
Number on appeal with bail		M +	F =	0
Number absent - leave applied for				
	- sick	M +	F =	0
	- other	M +	F =	0
Total absent - reasons known		0#M +	0#F =	0#
Number absent without leave				
	- no reason given	M +	F =	0
	- legal action pending	M +	F =	0
	- appealing Sec 25 cancellation	M +	F =	0
Total absent without leave		0#M +	0#F =	0#
Total number of people with warrants		0#M +	0#F =	0#

\*\*\* RESEARCH & STATISTICS UNIT \*\*\*

WEEKLY STATES FOR THE WEEK ENDING:

7TH APRIL, 1996

	Full-time Inmates		All Inmates Full-time + PD	
	No.	Date	No.	Date
State for this week (amended figure)	6211	7/4/96	6211#	7/4/96
State for previous week	6236	31/3/96	7668	31/3/96
Highest weekly state, year ending previous week	6424	9/7/95	7877	19/11/95
Lowest weekly state, year ending previous week	6142	4/2/96	7577	4/2/96

Total full-time inmates = 5629 (at DOCS institutions) + 582 (at Junee) = 6211

Included in the above total:

Total number of inmates	5883 M+	328 F=	6211 (Including 582 at Junee)
Number of sentenced inmates (excluding appellants)	4694 M+	236 F=	4930 (Including 509 at Junee)
Number of fine defaulters (in gaol for no other reason)	61 M+	10 F=	71 (Including 2 at Junee)
Number of inmates on appeal	433 M+	42 F=	475 (Including 51 at Junee)
Number of inmates on remand or for trial	754 M+	50 F=	804 (Including 22 at Junee)
Number of juveniles under 18 years	0 M+	0 F=	0 (Including 0 at Junee)

Periodic Detention

Number of people with warrants	0#M+	0#F=	0#
Number of people attending periodic detention	0#M+	0#F=	0#

# All PDCs were closed over Easter.

\*\*\* RESEARCH & STATISTICS UNIT \*\*\*



WEEKLY STATES AT MIDNIGHT ON: 5TH MAY, 1996

FULL-TIME INMATES	INMATES					*Accommodation in				Beds +/- **	Segreg- ation		Protect- ion	
	Males		Females		Total	Single Cells	Multi Cells	Dorm	Total Beds		M	F	M	F
	U/S	S	U/S	S										
Goulburn (Main)	44	277	-	-	321	314	55	-	369	48	12	-	40	-
Maitland	48	78	-	-	126	78	56	-	134	8	5	-	58	-
Long Bay Complex														
- Special Purpose Centre	7	30	-	2	39	51	-	-	51	12	-	-	-	-
- L. Bay D.D. Unit	2	7	-	-	9	9	-	-	9	0	-	-	-	-
M - L. Bay Hospital - Med.	5	18	1	-	24	16	12	-	28	4	-	-	-	-
A - L. Bay Hospital - Psych.	30	51	-	-	81	84	-	-	84	3	-	-	-	-
X - Prince Henry Annexe	2	7	-	-	9	-	-	7	7	-2	-	-	-	-
I - Reception & Induction	77	158	-	-	235	410	2	-	412	177	-	-	90	-
M - Special Care C. C.														
U - Special Care Unit	-	17	-	-	17	27	-	-	27	10	-	-	-	-
M - Crisis Support Unit	5	5	-	-	10	-	18	-	18	8	-	-	-	-
- Lifestyles Unit	-	5	-	-	5	-	8	-	8	3	-	-	-	-
- Remand Centre	335	24	-	-	359	216	2	8	226	-133	9	-	56	-
Lithgow	46	232	-	-	278	298	-	-	298	20	1	-	23	-
<b>Sub-total</b>	<b>601</b>	<b>909</b>	<b>1</b>	<b>2</b>	<b>1513</b>	<b>1503</b>	<b>153</b>	<b>15</b>	<b>1671</b>	<b>158</b>	<b>27</b>	<b>0</b>	<b>267</b>	<b>0</b>
Bathurst (Main)	46	166	1	-	213	220	4	-	224	11	2	-	9	-
M Broken Hill	7	29	-	-	36	14	14	-	28	-8	-	-	-	-
E Cooma	23	133	-	-	156	112	-	8	120	-36	-	-	-	-
D Grafton (Main)	46	90	-	4	140	42	-	12	54	-86	1	-	-	-
I Mulawa	-	-	79	130	209	162	52	8	222	13	-	-	-	12
U Parramatta	163	212	-	-	375	292	-	-	292	-83	2	-	-	-
M Parklea N.W.R.	88	197	-	-	285	314	-	-	314	29	6	-	1	-
Junee (Medium)	50	247	-	-	297	368	16	-	384	87	3	-	234	-
Tamworth	10	10	-	-	20	-	66	-	66	46	-	-	2	-
<b>Sub-total</b>	<b>433</b>	<b>1084</b>	<b>80</b>	<b>134</b>	<b>1731</b>	<b>1524</b>	<b>152</b>	<b>28</b>	<b>1704</b>	<b>-27</b>	<b>14</b>	<b>0</b>	<b>246</b>	<b>12</b>
Berrima	1	56	-	-	57	57	4	-	61	4	-	-	-	-
Emu Plains N.W.R.	-	-	11	58	71	116	2	-	118	47	-	-	-	-
- Work Release	-	-	-	2	2	-	-	-	-	-	-	-	-	-
Norma Parker N.W.R.	-	-	6	32	48	16	46	28	90	42	-	-	-	-
- Work Release	-	-	-	10	10	-	-	-	-	-	-	-	-	-
M Silverwater N.W.R.	37	253	-	-	392	45	408	-	453	61	-	-	-	-
I - Work Release	3	99	-	-	102	-	-	-	-	-	-	-	-	-
N Parklea Work Release	-	13	-	-	13	91	-	-	91	78	-	-	-	-
I Goulburn (X-Wing)	8	98	-	-	106	90	-	-	90	-16	-	-	-	-
M Bathurst (X-Wing)	5	86	-	-	91	89	-	-	89	-2	-	-	-	-
U Grafton (C-Unit)	6	111	-	-	117	96	-	-	96	-21	-	-	-	-
M Industrial Training Centre	-	365	-	-	365	236	37	-	273	-92	-	-	-	-
St Heliers	14	204	-	-	228	184	-	5	189	-39	-	-	-	-
- St Heliers Mobile Camp	-	10	-	-	10	-	-	-	-	-	-	-	-	-
Glen Innes	3	112	-	-	115	154	-	-	154	39	-	-	-	-
Mannus	6	119	-	-	125	81	48	12	141	16	-	-	-	-
Oberon	9	89	-	-	98	80	-	-	80	-18	-	-	-	-
Kirkconnell	7	188	-	-	195	70	60	-	130	-65	-	-	-	-
Junee (Minimum)	20	276	-	-	296	228	-	-	228	-68	-	-	238	-
John Morony	19	217	-	-	236	232	18	-	250	14	1	-	-	-
Cessnock	45	374	-	-	419	407	50	-	457	38	1	-	-	-
Malabar PDC	-	42	-	-	42	-	50	-	50	8	-	-	-	-
<b>Sub-total</b>	<b>183</b>	<b>2712</b>	<b>17</b>	<b>102</b>	<b>3014</b>	<b>2272</b>	<b>723</b>	<b>45</b>	<b>3040</b>	<b>26</b>	<b>2</b>	<b>0</b>	<b>238</b>	<b>0</b>
<b>TOTAL FULL-TIME</b>	<b>1217</b>	<b>4705</b>	<b>98</b>	<b>238</b>	<b>6258</b>	<b>5299</b>	<b>1028</b>	<b>88</b>	<b>6415</b>	<b>157</b>	<b>43</b>	<b>0</b>	<b>751</b>	<b>12</b>

\* Design accommodation in uncrowded conditions - amended 6th March, 1996.

N.W.R.=Non Work Release

\*\*Difference between number of beds in uncrowded conditions and number of inmates.

S=Sentenced inmates (not including appellants) U/S=Unsentenced inmates (including appellants, trials, remandees and deportees)

\*\*\* RESEARCH & STATISTICS UNIT \*\*\*

**WEEKLY STATES FOR THE WEEK ENDING: 5TH MAY, 1996**

PERIODIC DETAINEES (P.D.'S)	People with warrants			Attending			No.* Beds	Beds* +/-
	Stage1	Stage2	Total	Stage1	Stage2	Total		
Campbelltown	97	13	110	58	13	71	68	10
Grafton	36	22	58	10	11	21	50	40
Malabar	109	29	138	71	27	98	114	43
Malabar Mid-week	56	25	81	29	23	52	114	85
Parramatta	54	24	78	36	18	54	52	16
St Heliers	25	7	32	12	7	19	25	13
Silverwater	184	60	244	86	51	137	110	24
Silverwater Mid-week	135	53	188	53	52	105	110	57
Tomago	78	72	150	49	70	119	96	47
Windsor	83	29	112	39	27	66	60	21
Administration**	19	0	19	0	0	0	0	0
Administration Midweek	8	0	8	0	0	0	0	0
Wollongong	83	24	107	50	22	72	82	32
Mannus	19	12	31	11	12	23	24	13
<b>Total Males</b>	<b>986</b>	<b>370</b>	<b>1356</b>	<b>504</b>	<b>333</b>	<b>837</b>	<b>905</b>	<b>401</b>

Emu Plains	64	28	92	40	24	64	40	0
Administration**	1	0	1	0	0	0	0	0
Mannus	2	2	4	2	2	4	6	4
<b>Total Females</b>	<b>67</b>	<b>30</b>	<b>97</b>	<b>42</b>	<b>26</b>	<b>68</b>	<b>46</b>	<b>4</b>

<b>TOTAL P.D.'S</b>	<b>1053</b>	<b>400</b>	<b>1453</b>	<b>546</b>	<b>359</b>	<b>905</b>	<b>951</b>	<b>405</b>
---------------------	-------------	------------	-------------	------------	------------	------------	------------	------------

\* Number of free beds calculated on the numbers attending in Stage 1 and assuming uncrowded conditions.

Amended 3rd September, 1995.

\*\* Administration Stage 1 comprises detainees who have failed to attend for more than 8 consecutive weeks.

Number of fine defaulters attending periodic detention = 1.

**The total number of people with warrants comprises:**

Number attending		837	68	905
Number in full-time custody	sentenced-one month or less	5 M +	0 F =	5
	sentenced-more than one month	7 M +	0 F =	7
	remand	25 M +	2 F =	27
Number on appeal with bail		0 M +	0 F =	0
Number absent - leave applied for	- sick	74 M +	10 F =	84
	- other	64 M +	3 F =	67
Total absent - reasons known		175 M +	15 F =	190
Number absent without leave	- no reason given	146 M +	4 F =	150
	- legal action pending	198 M +	10 F =	208
	- appealing Sec 25 cancellation	0 M +	0 F =	0
Total absent without leave		344 M +	14 F =	358
Total number of people with warrants		1356 M +	97 F =	1453

\*\*\* RESEARCH & STATISTICS UNIT \*\*\*

**WEEKLY STATES FOR THE WEEK ENDING:**

**5TH MAY, 1996**

	Full-time Inmates		All Inmates Full-time + PD	
	No.	Date	No.	Date
<b>State for this week</b>	<b>6258</b>	<b>5/5/96</b>	<b>7711</b>	<b>5/5/96</b>
State for previous week	6295	28/4/96	7731	28/4/96
Highest weekly state, year ending previous week	6424	9/7/95	7877	19/11/95
Lowest weekly state, year ending previous week	6142	4/2/96	7577	4/2/96

Total full-time inmates = 5665 (at DOCS institutions) 593 (at Junee) = 6258

**Included in the above total:**

Total number of inmates	5922 M+	336 F=	6258 (including 593 at Junee)
Number of sentenced inmates (excluding appellants)	4705 M+	238 F=	4943 (including 523 at Junee)
Number of fine defaulters (in gaol for no other reason)	95 M+	12 F=	107 (including 8 at Junee)
Number of inmates on appeal	432 M+	41 F=	473 (including 43 at Junee)
Number of inmates on remand or for trial	783 M+	57 F=	840 (including 27 at Junee)
Number of juveniles under 18 years	0 M+	0 F=	0 (including 0 at Junee)

**Periodic Detention**

Number of people with warrants	1356 M+	97 F=	1453
Number of people attending periodic detention	837 M+	68 F=	905

WEEKLY STATES AT MIDNIGHT ON: 2ND JUNE, 1996

FULL-TIME INMATES	INMATES					*Accommodation in				Beds +/- **	Segregation		Protection	
	Males		Females		Total	Single Cells	Multi Cells	Dorm	Total Beds		M	F	M	F
	U/S	S	U/S	S										
Goulburn (Main)	60	306	-	-	366	314	55	-	369	3	9	-	42	-
Maitland	36	85	-	-	121	78	56	-	134	13	1	-	61	-
Long Bay Complex														
- Special Purpose Centre	8	30	-	2	40	51	-	-	51	11	-	-	-	-
- L. Bay D.D. Unit	2	5	-	-	7	9	-	-	9	2	-	-	-	-
M - L. Bay Hospital - Med.	7	20	1	-	28	16	12	-	28	0	-	-	-	-
A - L. Bay Hospital - Psych.	23	63	-	-	86	84	-	-	84	-2	-	-	-	-
X - Prince Henry Annexe	2	-	-	-	2	-	-	7	7	5	-	-	-	-
I - Reception & Induction	83	168	-	-	251	410	2	-	412	161	-	-	90	-
M - Special Care C. C.														
U - Special Care Unit	1	14	-	-	15	27	-	-	27	12	-	-	-	-
M - Crisis Support Unit	7	5	-	-	12	-	18	-	18	6	-	-	-	-
- Lifestyles Unit	-	4	-	-	4	-	8	-	8	4	-	-	-	-
- Remand Centre	334	29	-	-	363	216	2	8	226	-137	8	-	55	-
Lithgow	52	229	-	-	281	298	-	-	298	17	6	-	24	-
<b>Sub-total</b>	<b>615</b>	<b>958</b>	<b>1</b>	<b>2</b>	<b>1576</b>	<b>1503</b>	<b>153</b>	<b>15</b>	<b>1671</b>	<b>95</b>	<b>24</b>	<b>0</b>	<b>272</b>	<b>0</b>
Bathurst (Main)	48	177	-	-	225	220	4	-	224	-1	-	-	16	-
M Broken Hill	4	30	-	-	34	14	14	-	28	-6	-	-	-	-
E Cooma	21	129	-	-	150	112	-	8	120	-30	-	-	-	-
D Grafton (Main)	45	83	1	6	135	42	-	12	54	-81	-	-	8	-
I Mulawa	-	-	73	129	202	162	52	8	222	20	-	-	-	17
U Parramatta	156	214	-	-	370	292	-	-	292	-78	2	-	-	-
M Parklea N.W.R.	90	193	-	-	283	314	-	-	314	31	-	-	-	-
Junee (Medium)	37	224	-	-	261	368	16	-	384	123	1	-	255	-
Tamworth	13	15	-	-	28	-	66	-	66	38	1	-	4	-
<b>Sub-total</b>	<b>414</b>	<b>1065</b>	<b>74</b>	<b>135</b>	<b>1688</b>	<b>1524</b>	<b>152</b>	<b>28</b>	<b>1704</b>	<b>16</b>	<b>4</b>	<b>0</b>	<b>283</b>	<b>17</b>
Berrima	6	60	-	-	66	57	4	-	61	-5	-	-	-	-
Emu Plains N.W.R.	-	-	13	86	101	116	2	-	118	17	-	-	-	-
- Work Release	-	-	-	2										
Norma Parker N.W.R.	-	-	5	12	27	16	46	28	90	63	-	-	-	-
- Work Release	-	-	-	10										
M Silverwater N.W.R.	28	232	-	-	355	45	408	-	453	98	-	-	-	-
I - Work Release	6	89	-	-										
N Parklea Work Release	-	15	-	-	15	91	-	-	91	76	-	-	-	-
I Goulburn (X-Wing)	8	101	-	-	109	90	-	-	90	-19	-	-	-	-
M Bathurst (X-Wing)	6	87	-	-	93	89	-	-	89	-4	-	-	-	-
U Grafton (C-Unit)	8	110	-	-	118	96	-	-	96	-22	-	-	-	-
M Industrial Training Centre	-	374	-	-	374	236	37	-	273	-101	-	-	-	-
St Heliers	10	216	-	-	235	184	-	5	189	-46	-	-	1	-
- St Heliers Mobile Camp	9	-	-	-										
Glen Innes	4	113	-	-	117	154	-	-	154	37	-	-	-	-
Mannus	6	128	-	-	134	81	48	12	141	7	-	-	-	-
Oberon	4	76	-	-	80	80	-	-	80	0	-	-	-	-
Kirkconnell	10	185	-	-	195	70	60	-	130	-65	-	-	-	-
Junee (Minimum)	21	297	-	-	318	228	-	-	228	-90	2	-	214	-
John Morony	25	214	-	-	239	232	18	-	250	11	-	-	-	-
Cessnock	42	381	-	-	423	407	50	-	457	34	1	-	-	-
Malabar PDC	-	37	-	-	37	-	50	-	50	13	-	-	-	-
<b>Sub-total</b>	<b>193</b>	<b>2715</b>	<b>18</b>	<b>110</b>	<b>3036</b>	<b>2272</b>	<b>723</b>	<b>45</b>	<b>3040</b>	<b>4</b>	<b>3</b>	<b>0</b>	<b>215</b>	<b>0</b>
<b>TOTAL FULL-TIME</b>	<b>1222</b>	<b>4738</b>	<b>93</b>	<b>247</b>	<b>6300</b>	<b>5299</b>	<b>1028</b>	<b>88</b>	<b>6415</b>	<b>115</b>	<b>31</b>	<b>0</b>	<b>770</b>	<b>17</b>

\* Design accommodation in uncrowded conditions - amended 6th March, 1996.

N.W.R.=Non Work Release

\*\*Difference between number of beds in uncrowded conditions and number of inmates.

S=Sentenced inmates (not including appellants) U/S=Unsentenced inmates (including appellants, trials, remandees and deportees)

\*\*\* RESEARCH & STATISTICS UNIT \*\*\*

**WEEKLY STATES FOR THE WEEK ENDING: 2ND JUNE, 1996**

PERIODIC DETAINEES (P.D.'S)	People with warrants			Attending			No.* Beds	Beds* +/-
	Stage1	Stage2	Total	Stage1	Stage2	Total		
Campbelltown	110	15	125	63	13	76	68	5
Grafton	35	23	58	19	22	41	50	31
Malabar	117	28	145	78	27	105	114	36
Malabar Mid-week	54	25	79	30	22	52	114	84
Parramatta	63	21	84	43	21	64	52	9
St Heliers	32	5	37	15	5	20	25	10
Silverwater	182	58	240	91	51	142	110	19
Silverwater Mid-week	139	52	191	49	51	100	110	61
Tomago	84	69	153	47	68	115	96	49
Windsor	81	29	110	40	26	66	60	20
Administration**	15	0	15	0	0	0	0	0
Administration Midweek	8	0	8	0	0	0	0	0
Wollongong	88	27	115	55	23	78	82	27
Mannus	21	11	32	14	10	24	24	10
<b>Total Males</b>	<b>1029</b>	<b>363</b>	<b>1392</b>	<b>544</b>	<b>339</b>	<b>883</b>	<b>905</b>	<b>361</b>

Emu Plains	70	25	95	37	23	60	40	3
Administration**	1	0	1	0	0	0	0	0
Mannus	3	2	5	3	2	5	6	3
<b>Total Females</b>	<b>74</b>	<b>27</b>	<b>101</b>	<b>40</b>	<b>25</b>	<b>65</b>	<b>46</b>	<b>6</b>

<b>TOTAL P.D.'S</b>	<b>1103</b>	<b>390</b>	<b>1493</b>	<b>584</b>	<b>364</b>	<b>948</b>	<b>951</b>	<b>367</b>
---------------------	-------------	------------	-------------	------------	------------	------------	------------	------------

\* Number of free beds calculated on the numbers attending in Stage 1 and assuming uncrowded conditions.  
Amended 3rd September, 1995.

\*\* Administration Stage 1 comprises detainees who have failed to attend for more than 8 consecutive weeks.

Number of fine defaulters attending periodic detention = 3.

**The total number of people with warrants comprises:**

Number attending			883	65	948
Number in full-time custody					
sentenced-one month or less			7 M +	0 F =	7
sentenced-more than one month			6 M +	0 F =	6
remand			31 M +	1 F =	32
Number on appeal with bail			1 M +	0 F =	1
Number absent - leave applied for					
- sick			91 M +	14 F =	105
- other			48 M +	5 F =	53
Total absent - reasons known			184 M +	20 F =	204
Number absent without leave					
- no reason given			139 M +	5 F =	144
- legal action pending			186 M +	11 F =	197
- appealing Sec 25 cancellation			0 M +	0 F =	0
Total absent without leave			325 M +	16 F =	341
Total number of people with warrants			1392 M +	101 F =	1493

\*\*\* RESEARCH & STATISTICS UNIT \*\*\*

WEEKLY STATES FOR THE WEEK ENDING:

2ND JUNE, 1996

	Full-time Inmates		All Inmates Full-time + PD	
	No.	Date	No.	Date
State for this week	6300	2/6/96	7793	2/6/96
State for previous week (amended figure)	6300	26/5/96	7803	26/5/96
Highest weekly state, year ending previous week	6424	9/7/95	7877	19/11/95
Lowest weekly state, year ending previous week	6142	4/2/96	7577	4/2/96

Total full-time inmates = 5721 (at DOCS institutions) 579 (at Junee) = 6300

Included in the above total:

Total number of inmates	5960 M+	340 F=	6300 (including 579 at Junee)
Number of sentenced inmates (excluding appellants)	4738 M+	247 F=	4985 (including 521 at Junee)
Number of fine defaulters (in gaol for no other reason)	91 M+	20 F=	111 (including 3 at Junee)
Number of inmates on appeal	458 M+	47 F=	505 (including 45 at Junee)
Number of inmates on remand or for trial	762 M+	46 F=	808 (including 13 at Junee)
Number of juveniles under 18 years	0 M+	0 F=	0 (including 0 at Junee)

Periodic Detention

Number of people with warrants	1392 M+	101 F=	1493
Number of people attending periodic detention	883 M+	65 F=	948

WEEKLY STATES AT MIDNIGHT ON: 30TH JUNE, 1996

FULL-TIME INMATES	INMATES				Total	*Accommodation in				Beds +/- **	Segreg-		Protect-	
	Males		Females			Single	Multi	Dorm	Total		ation	ion	M	F
	U/S	S	U/S	S		Cells	Cells		Beds		M	F	M	F
Goulburn (Main)	62	302	-	-	364	314	55	-	369	5	9	-	37	-
Maitland	45	73	-	-	118	78	56	-	134	16	4	-	52	-
Long Bay Complex														
- Special Purpose Centre	7	29	-	2	38	51	-	-	51	13	-	-	-	-
- L. Bay D.D. Unit	1	8	-	-	9	9	-	-	9	0	-	-	-	-
M - L. Bay Hospital - Med.	4	15	-	-	19	16	12	-	28	9	-	-	-	-
A - L. Bay Hospital - Psych.	27	58	-	-	85	84	-	-	84	-1	-	-	-	-
X - Prince Henry Annexe	2	1	-	-	3	-	-	7	7	4	-	-	-	-
I - Reception & Induction	77	161	-	-	238	410	2	-	412	174	-	-	90	-
M - Special Care C. C.														
U - Special Care Unit	-	15	-	-	15	27	-	-	27	12	-	-	-	-
M - Crisis Support Unit	4	8	-	-	12	-	18	-	18	6	-	-	-	-
- Lifestyles Unit	-	6	-	-	6	-	8	-	8	2	-	-	-	-
- Alexander Maconochie	3	5	-	-	8	10	-	-	10	2	-	-	-	-
- Remand Centre	320	27	-	-	347	216	2	8	226	-121	7	-	49	-
Lithgow	43	227	-	-	270	298	-	-	298	28	5	-	23	-
<b>Sub-total</b>	<b>595</b>	<b>935</b>	<b>0</b>	<b>2</b>	<b>1532</b>	<b>1513</b>	<b>153</b>	<b>15</b>	<b>1681</b>	<b>149</b>	<b>25</b>	<b>0</b>	<b>251</b>	<b>0</b>
Bathurst (Main)	43	180	-	-	223	220	4	-	224	1	-	-	14	-
M Broken Hill	6	31	-	-	37	14	14	-	28	-9	-	-	-	-
E Cooma	21	137	-	-	158	112	-	8	120	-38	-	-	-	-
D Grafton (Main)	33	94	2	5	134	42	-	12	54	-80	-	-	-	-
I Mulawa	-	-	79	118	197	162	52	8	222	25	-	-	-	25
U Parramatta	175	236	-	-	411	292	-	-	292	-119	1	-	-	-
M Parklea N.W.R.	81	200	-	-	281	314	-	-	314	33	3	-	1	-
June (Medium)	42	246	-	-	288	368	16	-	384	96	1	-	239	-
Tamworth	13	15	-	-	28	-	66	-	66	38	2	-	4	-
<b>Sub-total</b>	<b>414</b>	<b>1139</b>	<b>81</b>	<b>123</b>	<b>1757</b>	<b>1524</b>	<b>152</b>	<b>28</b>	<b>1704</b>	<b>-53</b>	<b>7</b>	<b>0</b>	<b>258</b>	<b>25</b>
Berrima	9	56	-	-	65	57	4	-	61	-4	-	-	-	-
Emu Plains N.W.R.	-	-	13	89	104	116	2	-	118	14	-	-	-	-
- Work Release	-	-	-	2										
Norma Parker N.W.R.	-	-	1	16	26	16	46	28	90	64	-	-	-	-
- Work Release	-	-	-	9										
M Silverwater N.W.R.	23	211	-	-	335	45	408	-	453	118	-	-	-	-
I - Work Release	3	98	-	-										
N Parklea Work Release	-	14	-	-	14	91	-	-	91	77	-	-	-	-
I Goulburn (X-Wing)	10	103	-	-	113	90	-	-	90	-23	-	-	-	-
M Bathurst (X-Wing)	11	79	-	-	90	89	-	-	89	-1	-	-	-	-
U Grafton (C-Unit)	4	114	-	-	118	96	-	-	96	-22	-	-	-	-
M Industrial Training Centre	-	372	-	-	372	236	37	-	273	-99	-	-	-	-
St Heliers	13	207	-	-	229	184	-	5	189	-40	-	-	-	-
- St Heliers Mobile Camp	-	9	-	-										
Glen Innes	6	108	-	-	114	154	-	-	154	40	-	-	-	-
Mannus	8	115	-	-	123	81	48	12	141	18	-	-	-	-
Oberon	6	89	-	-	95	80	-	-	80	-15	-	-	-	-
Kirkconnell	7	184	-	-	191	70	60	-	130	-61	-	-	-	-
June (Minimum)	15	285	-	-	300	228	-	-	228	-72	1	-	242	-
John Morony	25	207	-	-	235	232	18	-	250	15	-	-	-	-
- Work Release	-	3	-	-										
Cessnock	34	386	-	-	420	407	50	-	457	37	1	-	-	-
Malabar PDC	-	28	-	-	28	-	50	-	50	22	-	-	-	-
<b>Sub-total</b>	<b>174</b>	<b>2668</b>	<b>14</b>	<b>116</b>	<b>2972</b>	<b>2272</b>	<b>723</b>	<b>45</b>	<b>3040</b>	<b>68</b>	<b>2</b>	<b>0</b>	<b>242</b>	<b>0</b>
<b>TOTAL FULL-TIME</b>	<b>1183</b>	<b>4742</b>	<b>95</b>	<b>241</b>	<b>6261</b>	<b>5309</b>	<b>1028</b>	<b>88</b>	<b>6425</b>	<b>164</b>	<b>34</b>	<b>0</b>	<b>751</b>	<b>25</b>

\* Design accommodation in uncrowded conditions - amended 11th June, 1996.

N.W.R.=Non Work Release

\*\*Difference between number of beds in uncrowded conditions and number of inmates.

S=Sentenced inmates (not including appellants) U/S=Unsentenced inmates (including appellants, trials, remandees and deportees)

\*\*\* RESEARCH & STATISTICS UNIT \*\*\*

**WEEKLY STATES FOR THE WEEK ENDING: 30TH JUNE, 1996**

PERIODIC DETAINEES (P.D.'S)	People with warrants			Attending			No.* Beds	Beds* +/-
	Stage1	Stage2	Total	Stage1	Stage2	Total		
Campbelltown	107	15	122	58	13	71	68	10
Grafton	28	23	51	16	22	38	50	34
Malabar	120	36	156	70	35	105	114	44
Malabar Mid-week	49	27	76	28	25	53	114	86
Parramatta	65	24	89	43	23	66	52	9
St Heliers#	34	4	38#	8	4	12#	25	17
Silverwater	186	58	244	99	49	148	110	11
Silverwater Mid-week	142	48	190	62	42	104	110	48
Tomago	91	70	161	58	64	122	96	38
Windsor	91	27	118	47	27	74	60	13
Administration**	17	0	17	0	0	0	0	0
Administration Midweek	6	0	6	0	0	0	0	0
Wollongong	87	24	111	44	23	67	82	38
Mannus	19	16	35	12	15	27	24	12
<b>Total Males</b>	<b>1042</b>	<b>372</b>	<b>1414#</b>	<b>545</b>	<b>342</b>	<b>887#</b>	<b>905</b>	<b>360</b>

Emu Plains	71	27	98	36	20	56	40	4
Administration**	1	0	1	0	0	0	0	0
Mannus	3	2	5	2	2	4	6	4
<b>Total Females</b>	<b>75</b>	<b>29</b>	<b>104</b>	<b>38</b>	<b>22</b>	<b>60</b>	<b>46</b>	<b>8</b>

<b>TOTAL P.D.'S</b>	<b>1117</b>	<b>401</b>	<b>1518#</b>	<b>583</b>	<b>364</b>	<b>947#</b>	<b>951</b>	<b>368</b>
---------------------	-------------	------------	--------------	------------	------------	-------------	------------	------------

\* Number of free beds calculated on the numbers attending in Stage 1 and assuming uncrowded conditions.

Amended 3rd September, 1995. # Preliminary figure

\*\* Administration Stage 1 comprises detainees who have failed to attend for more than 8 consecutive weeks.

Number of fine defaulters attending periodic detention = 1#.

**The total number of people with warrants comprises:**

Number attending		887#	60	947#
Number in full-time custody	sentenced-one month or less	5 M +	0 F =	5
	sentenced-more than one month	14 M +	1 F =	15
	remand	26 M +	1 F =	27
Number on appeal with bail		0 M +	0 F =	0
Number absent - leave applied for	- sick	95 M +	16 F =	111
	- other	56 M +	6 F =	62
Total absent - reasons known		196# M +	24 F =	220#
Number absent without leave	- no reason given	147 M +	7 F =	154
	- legal action pending	184 M +	13 F =	197
	- appealing Sec 25 cancellation	0 M +	0 F =	0
Total absent without leave		331# M +	20 F =	351#
Total number of people with warrants		1414# M +	104 F =	1518#

\*\*\* RESEARCH & STATISTICS UNIT \*\*\*



**WEEKLY STATES FOR THE WEEK ENDING:**

**30TH JUNE, 1996**

	Full-time Inmates		All Inmates Full-time + PD	
	No.	Date	No.	Date
State for this week	6261	30/6/96	7779#	30/6/96
State for previous week	6270	23/6/96	7786	23/6/96
Highest weekly state, year ending previous week	6424	9/7/95	7877	19/11/95
Lowest weekly state, year ending previous week	6142	4/2/96	7577	4/2/96

Total full-time inmates = 5673 (at DOCS institutions) 588 (at Junee) = 6261

**Included in the above total:**

Total number of inmates	5925 M+	336 F=	6261 (including 588 at Junee)
Number of sentenced inmates (excluding appellants)	4742 M+	241 F=	4983 (including 531 at Junee)
Number of fine defaulters (in gaol for no other reason)	83 M+	13 F=	96 (including 2 at Junee)
Number of inmates on appeal	433 M+	40 F=	473 (including 38 at Junee)
Number of inmates on remand or for trial	744 M+	55 F=	799 (including 19 at Junee)
Number of juveniles under 18 years	0 M+	1 F=	1 (including 0 at Junee)

**Periodic Detention**

Number of people with warrants	1414# M+	104 F=	1518#
Number of people attending periodic detention	887# M+	60 F=	947#

**# Preliminary figure**

**\*\*\* RESEARCH & STATISTICS UNIT \*\*\***