



Statistical Publication

Inmate Census 1997: Summary of Characteristics

Simon Corben

**Statistical Publication No.16
March 1998
ISSN 0814 1215**

NSW Department of Corrective Services

Statistical Publication No. 16
ISSN 0814 1215

© NSW Department of Corrective Services

Research and Statistics Unit
NSW Department of Corrective Services
Level 11, 24 Campbell Street,
SYDNEY NSW 2000

Telephone: (02) 9289 - 1553

Facsimile: (02) 9289 - 1590

Table of Contents

I	Explanatory notes	i
1.0	All inmates (includes periodic detainees)	
	Statistical summary	3
Table 1.1	Demographic characteristics	4
Table 1.2	Legal status characteristics	5
Table 1.3	Characteristics of sentences	6
Table 1.4	Inmate security classification	7
Table 1.5	Location and correctional centre classification	8
Table 1.6	Country of birth	10
Table 1.7	Statistical subdivision (SSD) of last known address	14
2.0	Full-time custody inmates	
	Statistical summary	19
Table 2.1	Demographic characteristics	20
Table 2.2	Legal status characteristics	21
Table 2.3	Characteristics of sentences	22
Table 2.4	Inmate security classification	23
Table 2.5	Location and correctional centre classification	24
Table 2.6	Country of birth	25
Table 2.7	Statistical subdivision (SSD) of last known address	29
3.0	Periodic detainees	
	Statistical summary	33
Table 3.1	Demographic characteristics	34
Table 3.2	Legal status characteristics	35
Table 3.3	Characteristics of sentences	36
Table 3.4	Location of detainees	37
Table 3.5	Country of birth	38
Table 3.6	Statistical subdivision (SSD) of last known address	41
4.0	Most Serious Offence: Aggregate sentence length for sentenced inmates and time in custody for unsentenced inmates	
Table 4.11	Most serious offence by aggregate sentence imposed - Sentenced male inmates in full-time custody	45
Table 4.12	Most serious offence by aggregate sentence imposed - Sentenced female inmates in full-time custody	46
Table 4.13	Most serious offence by aggregate sentence imposed - Sentenced inmates in full-time custody	47
Table 4.21	Most serious offence by aggregate sentence imposed - Sentenced male inmates in full-time custody (percentage)	48
Table 4.22	Most serious offence by aggregate sentence imposed - Sentenced female inmates in full-time custody (percentage)	49
Table 4.23	Most serious offence by aggregate sentence imposed - Sentenced inmates in full-time custody (percentage)	50
Table 4.3	Most serious offence by sentence imposed - Sentenced male detainees in periodic detention	51

Table 4.4	Most serious offence by sentence imposed - Sentenced female detainees in periodic detention	52
Table 4.5	Most serious offence by sentence imposed - Sentenced detainees in periodic detention	53
Table 4.61	Most serious offence by time in custody - Unsentenced male inmates in full-time custody	54
Table 4.62	Most serious offence by time in custody - Unsentenced female inmates in full-time custody	55
Table 4.63	Most serious offence by time in custody - Unsentenced inmates in full-time custody	56

5.0 Trends in the inmate population

Figure 1	Trends in the gender of the inmate population (includes periodic detainees)	59
Figure 2	Trends in the inmate custodial program (includes period detainees) .	59
Figure 3	Trends in the Aboriginal status of inmates (includes period detainees)	60
Figure 4	Trends in the legal status of inmates (includes period detainees) . . .	60
Figure 5	Trends in the security classification of convicted inmates (excludes period detainees)	61
Figure 6	Trends in the most serious offence (includes period detainees)	61
Table 5.1	Trends in the Aboriginal and Torres Strait Islander inmate population; 1982 to 1997 (all inmates)	62
Table 5.2	Trends in the Aboriginality status of inmates, 1982 to 1997	63

Appendix

Appendix 1: New South Wales Classification of Offences and Care of Placement of Children (Second Revision)	67
---	----

I EXPLANATORY NOTES

(a) General information

The New South Wales Inmate Census was conducted as part of the National Australian Prison Census for the 30th June 1997. The proposal for a National Prison Census first emerged at a Correctional Administrators meeting in Melbourne in September 1980 as an offshoot from a review of correctional statistics. Preliminary technical discussions were held in December 1980 and a formal proposal went to the Ministers' Conference held in New Zealand in April/May 1981. The Ministers discussed the proposed census at some length and finally agreed to conduct the first Australian National Prison Census on 30th June 1982 and that an inmate census should continue to be conducted annually.

This publication contains summary statistics of inmates held in full-time custody in gazetted NSW correctional centres and inmates with a live warrant for periodic detention at midnight on the 30th June 1997. Inmates temporarily absent from a full-time correctional centre (for reasons such as transfers to/from court, hospital) have been included.

(b) Concept of an episode of imprisonment

Statistical information describing inmate legal status, type of sentence, court type, sentence terms, legal status, most serious offence etc. all relate to the episode of imprisonment current at the 30th June 1997. For the purposes of this publication, an episode of imprisonment is taken as a continuous period of imprisonment within an adult correctional centre in NSW.

In distinguishing between the current and any previous episode of imprisonment the following rules were applied:

- i. for inmates held in custody for breach of a parole or license order relating to a previous period(s) of imprisonment, the previous period(s) of imprisonment is/are included in the current episode;
- ii. any period of imprisonment prior to a release to a court where the inmate was subsequently freed without having been returned to a correctional centre within 1 day, was excluded from the current episode;
- iii. any period of imprisonment prior to a release to police custody where the inmate was subsequently freed without having been returned to a correctional centre within 5 days, was excluded from the current episode;
- iv. any period of imprisonment prior to release on bail, on a bond or to immigration authorities was excluded from the current episode;
- v. any period of imprisonment prior to transfer to an institution other than a NSW correctional centre (e.g. a psychiatric hospital, juvenile or interstate correctional centre) was excluded from the current episode;

- vi. for inmates who had been returned to a correctional centre following an escape, the episode of imprisonment prior to the escape was included in the current episode.

(c) Known prior imprisonment as an adult

For the purposes of this publication this category includes inmates with a known prior episode of imprisonment (see above) in a gazetted NSW adult correctional centre.

(d) English speaking status of the country of birth

English speaking status of the country of birth is based on the "Main English speaking countries" as determined by the Australian Bureau of Statistics in "Australian Standard Classification of Countries for Social Statistics"(ASCCSS) (Catalogue No. 1269.0). The main English speaking countries comprise: Australia, Canada, New Zealand, South Africa, United Kingdom (England, Scotland, Wales, Ireland and Northern Ireland) and the United States of America.

(e) Legal status

For the purpose of this publication, inmates have been classified to the following eight legal status categories:

- i. under sentence - no appeal;
- ii. convicted but awaiting sentence;
- iii. awaiting result of appeal against conviction or sentence;
- iv. detained as a forensic patient;
- v. unconvicted (awaiting court hearing/trial);
- vi. awaiting deportation;
- vii. awaiting extradition to another jurisdiction;
- viii. civil inmate (held in custody for an offence other than a criminal offence).

(f) Type of sentence

Determinate sentences may be of fixed length or expressed as minimum and additional terms where the minimum term must be served in custody and the offender may serve the additional term in custody or on parole. The fine default sentence type refers to offenders held in custody only because of unpaid fines. The category "Life" includes persons sentenced to life imprisonment prior to introduction of the Truth in Sentencing legislation and those subsequently sentenced to "Natural" life under the current legislation. The "Life" category also includes inmates who have a set minimum term with an additional term of "Life".

(g) Level and State of court

This item represents the level and State of court at which the sentence for the most serious offence (see below) was imposed. For unsentenced inmates, the court at which the most recent order for detention for the most serious offence is used. Appeal courts were recorded only where such courts had altered the length of sentence relating to the most serious offence.

(h) Classification of offences

In this publication offences have been classified according to the Second Revision of the New South Wales Classification of Offences and of Care and Protection Orders for Children. This classification was developed by the NSW Office of the Australian Bureau of Statistics in collaboration with State authorities and has been used in NSW correctional centre and court statistics since 1973.

As a general rule, a legal charge of attempting, conspiring, or inciting to commit a crime, or aiding in the commission of, or participating as an accessory before the fact to a crime is classified to the offence category to which the crime so attempted, etc. is assigned. However, cases of accessory after the fact to a crime are assigned to the category "Accessory after the fact". While the classification has, of necessity, been abbreviated in the tables that follow, it is reproduced in full in the Appendix.

(i) Most serious offence

Although an inmate may be held in a correctional centre for a number of different offences, only the most serious offence in the current prison episode has been recorded in these statistics. The most serious offence is the offence for which the longest sentence was passed for a single count, ignoring undecided appeals. Where no sentence had been passed at 30 June 1997, or two different offences had equal sentences, the offence with the lowest (NSW) offence code number was chosen.

(j) Aggregate sentence

This item represents the longest period that a person may be detained under sentence in the current episode and includes any additional terms. The aggregate sentence for "Forensic Patient" and "Life" sentence types can not be determined as the court does not set a sentence expiry date. Pending charges that are likely to extend the aggregate sentence are ignored. In the case of an inmate serving the balance of a sentence after the revocation of parole or licence, the whole of the original sentence was included rather than just the balance of the sentence.

ALL INMATES

Blank Page

ALL INMATES Statistical Summary
--

⇒	TOTAL NUMBER OF PERSONS					7957	
⇒	GENDER	Male				7476	(94%)
		Female				481	(6%)
⇒	ABORIGINALITY	Aboriginal/TSI				1010	(12.7%)
		Non-Aboriginal/TSI				6817	(85.7%)
		Unknown				130	(1.6%)
⇒	AGE						
			Male		Female		Total
	18 - 24 years	2024	27.1%	129	26.8%	2153	27.1%
	25 - 34 years	2865	38.3%	196	40.7%	3061	38.5%
	35 - 44 years	1555	20.8%	86	17.9%	1641	20.6%
	45 years +	1032	13.8%	70	14.6%	1102	13.8%
	Total	7476	100%	481	100.0%	7957	100.0%
⇒	COUNTRY OF BIRTH	Australian born				5682	(71%)
		Overseas born				2275	(29%)
⇒	ENGLISH SPEAKING STATUS OF COUNTRY OF BIRTH	English speaking country				6202	(78%)
		Non-English speaking country				1755	(22%)
⇒	PRIOR ADULT IMPRISONMENT	Yes				4360	(55%)
		No				3597	(45%)
⇒	MAXIMUM PERIOD OF IMPRISONMENT	Unsentenced				991	(12.4%)
		Periodic Detention				1546	(19.4%)
		Less than 2 years				2271	(28.5%)
		2 to 5 years				1293	(16.3%)
		5 to 20 years				1583	(19.9%)
		20 years +				116	(1.5%)
		Life & Forensic Patient				157	(2.0%)
⇒	INMATE SECURITY CLASSIFICATION	Maximum security				489	(6.1%)
		Medium security				1128	(14.2%)
		Minimum security				3726	(46.8%)
		Remand/Trial				991	(12.5%)
		Unclassified				77	(1.0%)
		Periodic Detainee				1546	(19.4%)

Table 1.1: Demographic characteristics

	GENDER OF INMATE				TOTAL	
	Male		Female			
Age at Census date (years)						
18	99	1.3%	5	1.0%	104	1.3%
19	239	3.2%	15	3.1%	254	3.2%
20	280	3.7%	21	4.4%	301	3.8%
21-22	675	9.0%	45	9.4%	720	9.0%
23-24	731	9.8%	43	8.9%	774	9.7%
25-29	1649	22.1%	109	22.7%	1758	22.1%
30-34	1216	16.3%	87	18.1%	1303	16.4%
35-39	940	12.6%	56	11.6%	996	12.5%
40-44	615	8.2%	30	6.2%	645	8.1%
45-49	453	6.1%	34	7.1%	487	6.1%
50-54	277	3.7%	20	4.2%	297	3.7%
55-59	164	2.2%	11	2.3%	175	2.2%
60-64	74	1.0%	4	0.8%	78	1.0%
65 +	64	0.9%	1	0.2%	65	0.8%
Aboriginality						
Aboriginal/Torres Strait Is.	934	12.5%	76	15.8%	1010	12.7%
Other	6430	86.0%	387	80.5%	6817	85.7%
Unknown	112	1.5%	18	3.7%	130	1.6%
Known prior imprisonment as an adult						
Yes	4135	55.3%	225	46.8%	4360	54.8%
No	3341	44.7%	256	53.2%	3597	45.2%
Marital status at reception						
Never married	3728	49.9%	138	28.7%	3866	48.6%
Married/de-facto	2404	32.2%	164	34.1%	2568	32.3%
Separated	326	4.4%	26	5.4%	352	4.4%
Divorced	430	5.8%	34	7.1%	464	5.8%
Widowed	52	0.7%	5	1.0%	57	0.7%
Unknown	536	7.2%	114	23.7%	650	8.2%
English speaking status of country of birth						
Non-English speaking country	1620	21.7%	135	28.1%	1755	22.1%
English speaking country	5856	78.3%	346	71.9%	6202	77.9%
TOTAL	7476	100.0%	481	100.0%	7957	100.0%

Table 1.2: Legal status characteristics

	GENDER OF INMATE				TOTAL	
	Male		Female			
Legal status						
Sentenced - no appeal	6086	81.4%	378	78.6%	6464	81.2%
Appellant	428	5.7%	31	6.4%	459	5.8%
Forensic Patient	42	0.6%	-	-	42	0.5%
Remand/Trial	916	12.3%	71	14.8%	987	12.4%
Awaiting deportation	3	0.0%	-	-	3	0.0%
Awaiting extradition	-	-	1	0.2%	1	0.0%
Civil inmate	1	0.0%	-	-	1	0.0%
Type of sentence						
Not under sentence	919	12.3%	72	15.0%	991	12.5%
Life	114	1.5%	1	0.2%	115	1.4%
Forensic Patient	42	0.6%	-	-	42	0.5%
Minimum & Additional	3701	49.5%	178	37.0%	3879	48.8%
Fixed Term	1194	16.0%	89	18.5%	1283	16.1%
Fine Default	87	1.2%	14	2.9%	101	1.3%
Periodic Detention	1419	19.0%	127	26.4%	1546	19.4%
Level of Court						
Supreme	852	11.4%	52	10.8%	904	11.4%
District	3710	49.6%	200	41.6%	3910	49.1%
Local	2907	38.9%	228	47.4%	3135	39.4%
Childrens	5	0.1%	-	-	5	0.1%
Federal/Other	2	0.0%	1	0.2%	3	0.0%
State of Court						
New South Wales	7338	98.2%	468	97.3%	7806	98.1%
Victoria	8	0.1%	1	0.2%	9	0.1%
Queensland	10	0.1%	1	0.2%	11	0.1%
South Australia	3	0.0%	-	-	3	0.0%
Western Australia	1	0.0%	-	-	1	0.0%
Tasmania	1	0.0%	-	-	1	0.0%
Northern Territory	2	0.0%	-	-	2	0.0%
Australian Capital Territory	113	1.5%	11	2.3%	124	1.6%
Is any offence a Federal Offence ?						
Yes	327	4.4%	29	6.0%	356	4.5%
No	7149	95.6%	452	94.0%	7601	95.5%
TOTAL	7476	100.0%	481	100.0%	7957	100.0%

Table 1.3: Characteristics of sentences

	GENDER OF INMATE				TOTAL	
	Male		Female			
Most Serious Offence						
Murder	382	5.1%	17	3.5%	399	5.0%
Attempt murder	56	0.7%	4	0.8%	60	0.8%
Conspiracy to murder	10	0.1%	1	0.2%	11	0.1%
Manslaughter	89	1.2%	15	3.1%	104	1.3%
Major assault	676	9.0%	20	4.2%	696	8.7%
Other assault	388	5.2%	20	4.2%	408	5.1%
Rape	8	0.1%	-	-	8	0.1%
Serious sexual assault	452	6.0%	2	0.4%	454	5.7%
Incest/carnal knowledge	121	1.6%	1	0.2%	122	1.5%
Indecent assault	112	1.5%	2	0.4%	114	1.4%
Buggary/bestiality	10	0.1%	-	-	10	0.1%
Robbery with major assault	690	9.2%	25	5.2%	715	9.0%
Other robbery	328	4.4%	20	4.2%	348	4.4%
Fraud	331	4.4%	96	20.0%	427	5.4%
Break, enter and steal	963	12.9%	46	9.6%	1009	12.7%
Other steal	789	10.6%	73	15.2%	862	10.8%
Driving/traffic	539	7.2%	21	4.4%	560	7.0%
Offences against order	404	5.4%	30	6.2%	434	5.5%
Drug offences	1001	13.4%	77	16.0%	1078	13.5%
Other offences	127	1.7%	11	2.3%	138	1.7%
Is the most serious offence a federal offence ?						
Yes	229	3.1%	24	5.0%	253	3.2%
No	7247	96.9%	457	95.0%	7704	96.8%
Is the inmate serving a term for breach of parole, license or escape ?						
No breaches	6665	89.2%	442	91.9%	7107	89.3%
Breach of parole	605	8.1%	31	6.4%	636	8.0%
Breach of license	3	0.0%	-	-	3	0.0%
Escape	115	1.5%	6	1.2%	121	1.5%
Breach of parole and escape	81	1.1%	2	0.4%	83	1.0%
Other combination	7	0.1%	-	-	7	0.1%
TOTAL	7476	100.0%	481	100.0%	7957	100.0%

Table 1.3: Characteristics of sentences (continued)

	GENDER OF INMATE				TOTAL	
	Male		Female			
Length of aggregate sentence						
Not under sentence	919	12.3%	72	15.0%	991	12.5%
1 - 7 days	18	0.2%	1	0.2%	19	0.2%
8 days - < 1 month	75	1.0%	10	2.1%	85	1.1%
1 month - < 3 months	69	0.9%	14	2.9%	83	1.0%
3 months - < 6 months	355	4.7%	31	6.4%	386	4.9%
6 months - < 9 months	475	6.4%	33	6.9%	508	6.4%
9 months - < 1 year	361	4.8%	29	6.0%	390	4.9%
1 - < 2 years	756	10.1%	44	9.1%	800	10.1%
2 - < 5 years	1229	16.4%	64	13.3%	1293	16.3%
5 - < 7 years	576	7.7%	24	5.0%	600	7.5%
7 - < 10 years	511	6.8%	14	2.9%	525	6.6%
10 - < 15 years	309	4.1%	9	1.9%	318	4.0%
15 - < 20 years	134	1.8%	6	1.2%	140	1.8%
20 years +	114	1.5%	2	0.4%	116	1.5%
Life	114	1.5%	1	0.2%	115	1.4%
Forensic Patient	42	0.6%	-	-	42	0.5%
Periodic Detention	1419	19.0%	127	26.4%	1546	19.4%
TOTAL	7476	100.0%	481	100.0%	7957	100.0%

Table 1.4: Inmate security classification

	GENDER OF INMATE				TOTAL	
	Male		Female			
Classification of inmate						
A1	5	0.1%	-	-	5	0.1%
A2	422	5.6%	9	1.9%	431	5.4%
B	793	10.6%	33	6.9%	826	10.4%
C1	1062	14.2%	45	9.4%	1107	13.9%
C2	1973	26.4%	140	29.1%	2113	26.6%
C3	477	6.4%	29	6.0%	506	6.4%
Category 2 (Female)	-	-	2	0.4%	2	0.0%
E1	52	0.7%	1	0.2%	53	0.7%
E2	287	3.8%	13	2.7%	300	3.8%
Remand/Trial	919	12.3%	72	15.0%	991	12.5%
Unclassified	67	0.9%	10	2.1%	77	1.0%
Periodic detainee	1419	19.0%	127	26.4%	1546	19.4%
TOTAL	7476	100.0%	481	100.0%	7957	100.0%

Table 1.5: Location and correctional centre security classification

	GENDER OF INMATE				TOTAL	
	Male		Female			
Correctional Centre by security rating						
Maximum security						
Goulburn (Main)	399	5.3%	-	-	399	5.0%
Maitland	131	1.8%	-	-	131	1.6%
Special Purpose Centre	54	0.7%	1	0.2%	55	0.7%
Long Bay Hospital	110	1.5%	1	0.2%	111	1.4%
Reception and Induction Centre	240	3.2%	-	-	240	3.0%
Special Care Centre	106	1.4%	-	-	106	1.3%
Remand Centre	368	4.9%	-	-	368	4.6%
Lithgow	284	3.8%	-	-	284	3.6%
Metropolitan Remand and Reception Centre	120	1.6%	-	-	120	1.5%
Sub-total Maximum security	1812	24.2%	2	0.4%	1814	22.8%
Medium security						
Bathurst (Main)	229	3.1%	-	-	229	2.9%
Broken Hill	41	0.5%	1	0.2%	42	0.5%
Cooma	86	1.2%	-	-	86	1.1%
Grafton (Main)	134	1.8%	-	-	134	1.7%
Mulawa	-	-	202	42.0%	202	2.5%
Parramatta	283	3.8%	-	-	283	3.6%
Parklea	293	3.9%	-	-	293	3.7%
Junee - Medium	369	4.9%	1	0.2%	370	4.7%
Tamworth	35	0.5%	-	-	35	0.4%
Sub-total Medium security	1470	19.7%	204	42.4%	1674	21.0%
Minimum security						
Berrima	68	0.9%	-	-	68	0.9%
Emu Plains	-	-	105	21.8%	105	1.3%
Norma Parker	-	-	20	4.2%	20	0.3%
Silverwater	389	5.2%	-	-	389	4.9%
Goulburn X-Wing	111	1.5%	-	-	111	1.4%
Bathurst X-Wing	90	1.2%	-	-	90	1.1%
Grafton C-Unit	107	1.4%	15	3.1%	122	1.5%
Junee - Minimum	224	3.0%	-	-	224	2.8%
Industrial Training Centre	289	3.9%	-	-	289	3.6%
St Heliers	251	3.4%	-	-	251	3.2%
Glen Innes	119	1.6%	-	-	119	1.5%
Mannus	123	1.6%	-	-	123	1.5%
Oberon	97	1.3%	-	-	97	1.2%
Kirkconnell	204	2.7%	-	-	204	2.6%
John Morony	238	3.2%	-	-	238	3.0%
Cessnock	432	5.8%	-	-	432	5.4%
Malabar Fines Unit	33	0.4%	-	-	33	0.4%
Parramatta Transitional Centre	-	-	8	1.7%	8	0.1%
Sub-total Minimum security	2775	37.1%	148	30.8%	2923	36.7%
SUB- TOTAL Full-time custody	6057	81.0%	354	73.6%	6411	80.6%

Table 1.5: Location and correctional centre security classification (continued)

	GENDER OF INMATE				TOTAL	
	Male		Female			
Periodic detention centres						
PD Administration Weekend	20	0.3%	4	0.8%	24	0.3%
PD Administration Mid-Week	8	0.1%	-	-	8	0.1%
Campbelltown Weekend PDC	112	1.5%	-	-	112	1.4%
Campbelltown Mid-Week PDC	64	0.9%	-	-	64	0.8%
Emu Plains PDC	-	-	96	20.0%	96	1.2%
Grafton PDC	61	0.8%	-	-	61	0.8%
Malabar Weekend PDC	147	2.0%	-	-	147	1.8%
Malabar Mid-Week PDC	77	1.0%	-	-	77	1.0%
Mannus PDC	30	0.4%	5	1.0%	35	0.4%
Parramatta PDC	87	1.2%	-	-	87	1.1%
Silverwater Weekend PDC	200	2.7%	-	-	200	2.5%
Silverwater Mid-Week PDC	147	2.0%	-	-	147	1.8%
Tamworth PDC	23	0.3%	-	-	23	0.3%
Tomago PDC	167	2.2%	22	4.6%	189	2.4%
Windsor PDC	175	2.3%	-	-	175	2.2%
Wollongong PDC	101	1.4%	-	-	101	1.3%
SUB-TOTAL Periodic detention	1419	19.0%	127	26.4%	1546	19.4%
TOTAL	7476	100.0%	481	100.0%	7957	100.0%

Table 1.6: Country of birth

	GENDER OF INMATE				TOTAL	
	Male		Female			
COUNTRY OF BIRTH						
OCEANIA AND ANTARCTICA						
AUSTRALIA	5366	71.8%	316	65.7%	5682	71.4%
- <i>New South Wales</i>	4627	61.9%	275	57.2%	4902	61.6%
- <i>Victoria</i>	207	2.8%	11	2.3%	218	2.7%
- <i>Queensland</i>	147	2.0%	8	1.7%	155	1.9%
- <i>South Australia</i>	38	0.5%	3	0.6%	41	0.5%
- <i>Western Australia</i>	34	0.5%	2	0.4%	36	0.5%
- <i>Tasmania</i>	28	0.4%	1	0.2%	29	0.4%
- <i>Northern Territory</i>	8	0.1%	-	-	8	0.1%
- <i>Australian Capital Territory</i>	75	1.0%	3	0.6%	78	1.0%
- <i>Australia (not further defined - nfd)</i>	202	2.7%	13	2.7%	215	2.7%
NEW ZEALAND	214	2.9%	14	2.9%	228	2.9%
PAPUA NEW GUINEA	12	0.2%	-	-	12	0.2%
POLYNESIA (excl. Hawaii)	109	1.5%	2	0.4%	111	1.4%
- <i>Cook Islands</i>	6	0.1%	1	0.2%	7	0.1%
- <i>Fiji</i>	45	0.6%	-	-	45	0.6%
- <i>American Samoa</i>	10	0.1%	-	-	10	0.1%
- <i>Western Samoa</i>	17	0.2%	1	0.2%	18	0.2%
- <i>Tonga</i>	30	0.4%	-	-	30	0.4%
- <i>Tuvalu</i>	1	0.0%	-	-	1	0.0%
OCEANIA (nfd)	4	0.1%	-	-	4	0.1%
Sub-total OCEANIA AND ANTARCTICA	5705	76.3%	332	69.0%	6037	75.9%
EUROPE AND THE USSR						
THE UNITED KINGDOM AND IRELAND	249	3.3%	15	3.1%	264	3.3%
- <i>England</i>	185	2.5%	10	2.1%	195	2.5%
- <i>Scotland</i>	39	0.5%	3	0.6%	42	0.5%
- <i>Wales</i>	7	0.1%	2	0.4%	9	0.1%
- <i>Northern Ireland</i>	6	0.1%	-	-	6	0.1%
- <i>Ireland (nfd)</i>	12	0.2%	-	-	12	0.2%
SOUTHERN EUROPE	200	2.7%	6	1.2%	206	2.6%
- <i>Albania</i>	3	0.0%	-	-	3	0.0%
- <i>Cyprus</i>	5	0.1%	-	-	5	0.1%
- <i>Greece</i>	37	0.5%	-	-	37	0.5%
- <i>Italy</i>	54	0.7%	3	0.6%	57	0.7%
- <i>Malta</i>	16	0.2%	-	-	16	0.2%
- <i>Portugal</i>	7	0.1%	-	-	7	0.1%
- <i>Spain</i>	13	0.2%	-	-	13	0.2%
- <i>Bosnia-Herzegovina</i>	5	0.1%	-	-	5	0.1%
- <i>Croatia</i>	5	0.1%	-	-	5	0.1%
- <i>Fmr Yugoslav Rep. Macedonia</i>	13	0.2%	-	-	13	0.2%

Table 1.6: Country of birth (continued)

	GENDER OF INMATE				TOTAL	
	Male		Female			
COUNTRY OF BIRTH						
SOUTHERN EUROPE (cont.)						
- Slovenia	1	0.0%	-	-	1	0.0%
- Fmr Rep. Serbia & Montenegro	3	0.0%	-	-	3	0.0%
- Fmr Yugoslav Republic (nfd)	38	0.5%	3	0.6%	41	0.5%
WESTERN EUROPE	52	0.7%	4	0.8%	56	0.7%
- Austria	1	0.0%	1	0.2%	2	0.0%
- Belgium	3	0.0%	-	-	3	0.0%
- France	10	0.1%	-	-	10	0.1%
- Federal Republic of Germany	24	0.3%	3	0.6%	27	0.3%
- Netherlands	14	0.2%	-	-	14	0.2%
NORTHERN EUROPE	8	0.1%	1	0.2%	9	0.1%
- Denmark	1	0.0%	-	-	1	0.0%
- Finland	4	0.1%	-	-	4	0.1%
- Sweden	3	0.0%	1	0.2%	4	0.1%
EASTERN EUROPE	58	0.8%	5	1.0%	63	0.8%
- Bulgaria	1	0.0%	-	-	1	0.0%
- Hungary	8	0.1%	2	0.4%	10	0.1%
- Poland	5	0.1%	1	0.2%	6	0.1%
- Romania	38	0.5%	1	0.2%	39	0.5%
- Czech Republic	6	0.1%	1	0.2%	7	0.1%
USSR AND BALTIC STATES	4	0.1%	-	-	4	0.1%
- USSR (nfd)	4	0.1%	-	-	4	0.1%
Sub-total						
EUROPE AND THE USSR	571	7.6%	31	6.4%	602	7.6%
MIDDLE EAST AND NORTH AFRICA						
MIDDLE EAST	192	2.6%	3	0.6%	195	2.5%
- Bahrain	2	0.0%	-	-	2	0.0%
- Iran	7	0.1%	-	-	7	0.1%
- Iraq	11	0.1%	-	-	11	0.1%
- Israel	9	0.1%	-	-	9	0.1%
- Jordan	7	0.1%	-	-	7	0.1%
- Lebanon	124	1.7%	2	0.4%	126	1.6%
- Syria	3	0.0%	-	-	3	0.0%
- Turkey	29	0.4%	1	0.2%	30	0.4%
NORTH AFRICA	15	0.2%	-	-	15	0.2%
- Algeria	2	0.0%	-	-	2	0.0%
- Egypt	11	0.1%	-	-	11	0.1%
- Morocco	1	0.0%	-	-	1	0.0%
- Tunisia	1	0.0%	-	-	1	0.0%
Sub-total						
MIDDLE EAST AND NORTH AFRICA	207	2.8%	3	0.6%	210	2.6%

Table 1.6: Country of birth (continued)

	GENDER OF INMATE				TOTAL	
	Male		Female			
COUNTRY OF BIRTH						
SOUTHEAST ASIA						
- Cambodia	19	0.3%	-	-	19	0.2%
- Indonesia	13	0.2%	-	-	13	0.2%
- Laos	24	0.3%	2	0.4%	26	0.3%
- Malaysia	22	0.3%	2	0.4%	24	0.3%
- Burma (Myanmar)	2	0.0%	-	-	2	0.0%
- Philippines	25	0.3%	2	0.4%	27	0.3%
- Singapore	20	0.3%	2	0.4%	22	0.3%
- Thailand	11	0.1%	3	0.6%	14	0.2%
- Vietnam	244	3.3%	13	2.7%	257	3.2%
Sub-total SOUTHEAST ASIA	380	5.1%	24	5.0%	404	5.1%
NORTHEAST ASIA						
- China (excl. Taiwan)	54	0.7%	1	0.2%	55	0.7%
- Hong Kong	32	0.4%	1	0.2%	33	0.4%
- Japan	5	0.1%	-	-	5	0.1%
- North Korea	15	0.2%	-	-	15	0.2%
- South Korea	4	0.1%	-	-	4	0.1%
- Taiwan	2	0.0%	-	-	2	0.0%
Sub-total NORTHEAST ASIA	112	0.0%	2	0.4%	114	1.4%
SOUTHERN ASIA						
SOUTHERN ASIA	20	0.3%	-	-	20	0.3%
- India	12	0.2%	-	-	12	0.2%
- Nepal	2	0.0%	-	-	2	0.0%
- Pakistan	3	0.0%	-	-	3	0.0%
- Sri Lanka	3	0.0%	-	-	3	0.0%
ASIA (nfd)	3	0.0%	-	-	3	0.0%
Sub-total SOUTHERN ASIA	23	0.3%	-	-	23	0.3%
NORTH AMERICA						
- Canada	4	0.1%	-	-	4	0.1%
- United States of America	13	0.2%	1	0.2%	14	0.2%
Sub-total NORTH AMERICA	17	0.2%	1	0.2%	18	0.2%

Table 1.6: Country of birth (continued)

	GENDER OF INMATE				TOTAL	
	Male		Female			
COUNTRY OF BIRTH						
SOUTH AMERICA, CENTRAL AMERICA AND THE CARIBBEAN						
SOUTH AMERICA	48	0.6%	5	1.0%	53	0.7%
- Argentina	6	0.1%	-	-	6	0.1%
- Bolivia	1	0.0%	-	-	1	0.0%
- Brazil	4	0.1%	-	-	4	0.1%
- Chile	7	0.1%	3	0.6%	10	0.1%
- Colombia	11	0.1%	2	0.4%	13	0.2%
- Peru	6	0.1%	-	-	6	0.1%
- Uruguay	9	0.1%	-	-	9	0.1%
- Venezuela	4	0.1%	-	-	4	0.1%
CENTRAL AMERICA	8	0.1%	1	0.2%	9	0.1%
- El Salvador	4	0.1%	-	0.0%	4	0.1%
- Mexico	1	0.0%	1	0.2%	2	0.0%
- Nicaragua	3	0.0%	-	0.0%	3	0.0%
THE CARIBBEAN	2	0.0%	-	-	2	0.0%
- The Caribbean (nfd)	1	0.0%	-	-	1	0.0%
- Cuba	1	0.0%	-	-	1	0.0%
AMERICA (nfd)	19	0.3%	1	0.2%	20	0.3%
Sub-total						
SOUTH AMERICA, CENTRAL AMERICA AND THE CARIBBEAN	77	1.0%	7	1.5%	84	1.1%
AFRICA (excluding North Africa)						
CENTRAL AND WEST AFRICA	3	0.0%	-	-	3	0.0%
- Ghana	2	0.0%	-	-	2	0.0%
- Kenya	1	0.0%	-	-	1	0.0%
SOUTHERN AND EAST AFRICA	12	0.2%	-	-	12	0.2%
- Mauritius	1	0.0%	-	-	1	0.0%
- South Africa	10	0.1%	-	-	10	0.1%
- Zimbabwe	1	0.0%	-	-	1	0.0%
AFRICA (nfd)	2	0.0%	-	-	2	0.0%
Sub-total						
AFRICA (excluding North Africa)	17	0.0%	-	-	17	0.2%
Unknown	367	4.9%	81	16.8%	448	5.6%
TOTAL	7476	100.0%	481	100.0%	7957	100.0%

Table 1.7: Statistical subdivision (SSD) of last known address

	GENDER OF INMATE				TOTAL	
	Male		Female			
Statistical Subdivision (SSD)						
New South Wales						
Inner Sydney	577	7.7%	36	7.5%	613	7.7%
Eastern Suburbs	185	2.5%	12	2.5%	197	2.5%
St. George - Sutherland	249	3.3%	17	3.5%	266	3.3%
Canterbury - Bankstown	307	4.1%	14	2.9%	321	4.0%
Fairfield - Liverpool	586	7.8%	37	7.7%	623	7.8%
Outer South Western Sydney	311	4.2%	21	4.4%	332	4.2%
Inner Western Sydney	138	1.8%	7	1.5%	145	1.8%
Central Western Sydney	326	4.4%	18	3.7%	344	4.3%
Outer Western Sydney	299	4.0%	13	2.7%	312	3.9%
Blacktown - Baulkham Hills	490	6.6%	29	6.0%	519	6.5%
Lower Northern Sydney	131	1.8%	8	1.7%	139	1.7%
Hornsby - Ku-ring-gai	57	0.8%	2	0.4%	59	0.7%
Northern Beaches	114	1.5%	7	1.5%	121	1.5%
Gosford - Wyong	256	3.4%	23	4.8%	279	3.5%
Sub-total Sydney Statistical Division	4026	53.9%	244	50.7%	4270	53.7%
Newcastle	551	7.4%	26	5.4%	577	7.3%
Hunter (excl. Newcastle)	59	0.8%	1	0.2%	60	0.8%
Wollongong	330	4.4%	19	4.0%	349	4.4%
Illawarra (excl. Wollongong)	30	0.4%	1	0.2%	31	0.4%
Tweed Heads	18	0.2%	-	-	18	0.2%
Richmond - Tweed (excl. Tweed Heads)	110	1.5%	5	1.0%	115	1.4%
Clarence	122	1.6%	5	1.0%	127	1.6%
Hastings	124	1.7%	5	1.0%	129	1.6%
Northern Slopes	75	1.0%	4	0.8%	79	1.0%
Northern Tablelands	65	0.9%	3	0.6%	68	0.9%
North Central Plain	55	0.7%	-	-	55	0.7%
Central Macquarie	139	1.9%	9	1.9%	148	1.9%
Macquarie - Barwon	46	0.6%	3	0.6%	49	0.6%
Upper Darling	36	0.5%	-	-	36	0.5%
Bathurst - Orange	65	0.9%	3	0.6%	68	0.9%
Central Tablelands (excl. Bath-Orange)	42	0.6%	1	0.2%	43	0.5%
Lachlan	61	0.8%	3	0.6%	64	0.8%
Queanbeyan	37	0.5%	3	0.6%	40	0.5%
Southern Tablelands (excl. Queanbeyan)	53	0.7%	-	-	53	0.7%
Lower South Coast	31	0.4%	1	0.2%	32	0.4%
Snowy	6	0.1%	-	-	6	0.1%
Central Murrumbidgee	81	1.1%	7	1.5%	88	1.1%
Lower Murrumbidgee	26	0.3%	-	-	26	0.3%
Albury	37	0.5%	3	0.6%	40	0.5%
Upper Murray (excl. Albury)	8	0.1%	-	-	8	0.1%
Central Murray	8	0.1%	-	-	8	0.1%
Murray - Darling	8	0.1%	-	-	8	0.1%
Far West	40	0.5%	-	-	40	0.5%
Sub-total (excl. Sydney SD)	2263	30.3%	102	21.2%	2365	29.7%
Sub-total New South Wales	6289	84.1%	656	136.4%	6945	87.3%

Table 1.7: Statistical subdivision (SSD) of last known address (continued)

	GENDER OF INMATE				TOTAL	
	Male		Female			
Statistical Subdivision (SSD)						
Other States/Territories						
Victoria	50	0.7%	1	0.2%	51	0.6%
Queensland	90	1.2%	3	0.6%	93	1.2%
South Australia	20	0.3%	1	0.2%	21	0.3%
Western Australia	14	0.2%	-	-	14	0.2%
Tasmania	7	0.1%	-	-	7	0.1%
Northern Territory	1	0.0%	-	-	1	0.0%
Australian Capital Territory	54	0.7%	2	0.4%	56	0.7%
Sub-total Other States/Territories	236	3.2%	7	1.5%	243	3.1%
No fixed abode	249	3.3%	12	2.5%	261	3.3%
Overseas	32	0.4%	-	-	32	0.4%
Unknown	654	8.7%	116	24.1%	770	9.7%
TOTAL	7476	100.0%	481	100.0%	7957	100.0%

FULL-TIME CUSTODY

INMATES

Blank Page

FULL-TIME CUSTODY INMATES

Statistical Summary

⇒	TOTAL NUMBER OF PERSONS	6411						
⇒	GENDER	Male	6057	(94%)				
		Female	354	(6%)				
⇒	ABORIGINALITY	Aboriginal/TSI	912	(14.2%)				
		Non-Aboriginal/TSI	5394	(84.1%)				
		Unknown	105	(1.6%)				
⇒	AGE							
			Male		Female		Total	
	18 - 24 years	1559	25.7%	101	28.5%	1660	25.9%	
	25 - 34 years	2350	38.8%	151	42.7%	2501	39.0%	
	35 - 44 years	1278	21.1%	59	16.7%	1337	20.9%	
	45 years +	870	14.4%	43	12.1%	913	14.2%	
	Total	6057	100%	354	100.0%	6411	100.0%	
⇒	COUNTRY OF BIRTH	Australian born	4501	(70%)				
		Overseas born	1910	(30%)				
⇒	NON-ENGLISH SPEAKING BACKGROUND (NESB) STATUS (based on Country of birth)							
		English speaking country	4916	(77%)				
		Non-English speaking country	1495	(23%)				
⇒	PRIOR ADULT IMPRISONMENT	Yes	3932	(61%)				
		No	2479	(39%)				
⇒	MAXIMUM PERIOD OF IMPRISONMENT	Unsentenced	991	(15.5%)				
		Less than 2 years	2271	(35.4%)				
		2 to 5 years	1293	(20.2%)				
		5 to 20 years	1583	(24.7%)				
		20 years +	116	(1.8%)				
		Life & Forensic Patient	157	(2.4%)				
⇒	INMATE SECURITY CLASSIFICATION	Maximum security	489	(7.6%)				
		Medium security	1128	(17.6%)				
		Minimum security	3726	(58.1%)				
		Remand/Trial	991	(15.5%)				
		Unclassified	77	(1.2%)				

Table 2.1: Demographic characteristics

	GENDER OF INMATE				TOTAL	
	Male		Female			
Age at Census date (years)						
18	85	1.4%	5	1.4%	90	1.4%
19	182	3.0%	11	3.1%	193	3.0%
20	197	3.3%	18	5.1%	215	3.4%
21-22	526	8.7%	33	9.3%	559	8.7%
23-24	569	9.4%	34	9.6%	603	9.4%
25-29	1368	22.6%	87	24.6%	1455	22.7%
30-34	982	16.2%	64	18.1%	1046	16.3%
35-39	770	12.7%	38	10.7%	808	12.6%
40-44	508	8.4%	21	5.9%	529	8.3%
45-49	385	6.4%	20	5.7%	405	6.3%
50-54	230	3.8%	13	3.7%	243	3.8%
55-59	142	2.3%	8	2.3%	150	2.3%
60-64	66	1.1%	2	0.6%	68	1.1%
65 +	47	0.8%	-	-	47	0.7%
Aboriginality						
Aboriginal/Torres Strait Is.	851	14.1%	61	17.2%	912	14.2%
Other	5118	84.5%	276	78.0%	5394	84.1%
Unknown	88	1.5%	17	4.8%	105	1.6%
Known prior imprisonment as an adult						
Yes	3723	61.5%	209	59.0%	3932	61.3%
No	2334	38.5%	145	41.0%	2479	38.7%
Marital status at reception						
Never married	2998	49.5%	91	25.7%	3089	48.2%
Married/de-facto	1920	31.7%	120	33.9%	2040	31.8%
Separated	251	4.1%	14	4.0%	265	4.1%
Divorced	354	5.8%	19	5.4%	373	5.8%
Widowed	47	0.8%	1	0.3%	48	0.7%
Unknown	487	8.0%	109	30.8%	596	9.3%
English speaking background status of country of birth						
Non-English speaking country	1377	22.7%	118	33.3%	1495	23.3%
English speaking country	4680	77.3%	236	66.7%	4916	76.7%
TOTAL	6057	100.0%	354	100.0%	6411	100.0%

Table 2.2: Legal status characteristics

	GENDER OF INMATE				TOTAL	
	Male		Female			
Legal status						
Sentenced - no appeal	4667	77.1%	251	70.9%	4918	76.7%
Appellant	428	7.1%	31	8.8%	459	7.2%
Forensic Patient	42	0.7%	-	-	42	0.7%
Remand/Trial	916	15.1%	71	20.1%	987	15.4%
Awaiting deportation	3	0.0%	-	-	3	0.0%
Awaiting extradition	-	-	1	0.3%	1	0.0%
Civil inmate	1	0.0%	-	-	1	0.0%
Type of sentence						
Not under sentence	919	15.2%	72	20.3%	991	15.5%
Life	114	1.9%	1	0.3%	115	1.8%
Forensic Patient	42	0.7%	-	-	42	0.7%
Minimum & Additional	3701	61.1%	178	50.3%	3879	60.5%
Fixed Term	1194	19.7%	89	25.1%	1283	20.0%
Fine Default	87	1.4%	14	4.0%	101	1.6%
Level of Court						
Supreme	822	13.6%	49	13.8%	871	13.6%
District	3119	51.5%	139	39.3%	3258	50.8%
Local	2109	34.8%	165	46.6%	2274	35.5%
Childrens	5	0.1%	-	-	5	0.1%
Federal/Other	2	0.0%	1	0.3%	3	0.0%
State of Court						
New South Wales	5919	97.7%	341	96.3%	6260	97.6%
Victoria	8	0.1%	1	0.3%	9	0.1%
Queensland	10	0.2%	1	0.3%	11	0.2%
South Australia	3	0.0%	-	-	3	0.0%
Western Australia	1	0.0%	-	-	1	0.0%
Tasmania	1	0.0%	-	-	1	0.0%
Northern Territory	2	0.0%	-	-	2	0.0%
Australian Capital Territory	113	1.9%	11	3.1%	124	1.9%
Is any offence a federal offence ?						
Yes	324	5.3%	29	8.2%	353	5.5%
No	5733	94.7%	325	91.8%	6058	94.5%
TOTAL	6057	100.0%	354	100.0%	6411	100.0%

Table 2.3: Characteristics of sentences

	GENDER OF INMATE				TOTAL	
	Male		Female			
Most serious offence						
Murder	382	6.3%	17	4.8%	399	6.2%
Attempt murder	56	0.9%	4	1.1%	60	0.9%
Conspiracy to murder	10	0.2%	1	0.3%	11	0.2%
Manslaughter	88	1.5%	14	4.0%	102	1.6%
Major assault	544	9.0%	17	4.8%	561	8.8%
Other assault	300	5.0%	18	5.1%	318	5.0%
Rape	8	0.1%	-	-	8	0.1%
Serious sexual assault	427	7.1%	2	0.6%	429	6.7%
Incest/carnal knowledge	116	1.9%	1	0.3%	117	1.8%
Indecent assault	69	1.1%	2	0.6%	71	1.1%
Buggary/bestiality	10	0.2%	-	-	10	0.2%
Robbery with major assault	657	10.8%	24	6.8%	681	10.6%
Other robbery	302	5.0%	14	4.0%	316	4.9%
Fraud	197	3.3%	54	15.3%	251	3.9%
Break, enter and steal	857	14.1%	35	9.9%	892	13.9%
Other steal	614	10.1%	56	15.8%	670	10.5%
Driving/traffic	235	3.9%	11	3.1%	246	3.8%
Offences against order	281	4.6%	20	5.7%	301	4.7%
Drug offences	795	13.1%	54	15.3%	849	13.2%
Other offences	109	1.8%	10	2.8%	119	1.9%
Is the most serious offence a federal offence ?						
Yes	227	3.7%	24	6.8%	251	3.9%
No	5830	96.3%	330	93.2%	6160	96.1%
Is the inmate serving a term for breach of parole, license or escape ?						
No breaches	5246	86.6%	315	89.0%	5561	86.7%
Breach of parole	605	10.0%	31	8.8%	636	9.9%
Breach of license	3	0.0%	-	-	3	0.0%
Escape	115	1.9%	6	1.7%	121	1.9%
Breach of parole and escape	81	1.3%	2	0.6%	83	1.3%
Other combination	7	0.1%	-	-	7	0.1%
TOTAL	6057	100.0%	354	100.0%	6411	100.0%

Table 2.3: Characteristics of sentences (continued)

	GENDER OF INMATE				TOTAL	
	Male		Female			
Length of aggregate sentence						
Not under sentence	919	15.2%	72	20.3%	991	15.5%
1 - 7 days	18	0.3%	1	0.3%	19	0.3%
8 days - < 1 month	75	1.2%	10	2.8%	85	1.3%
1 month - < 3 months	69	1.1%	14	4.0%	83	1.3%
3 months - < 6 months	355	5.9%	31	8.8%	386	6.0%
6 months - < 9 months	475	7.8%	33	9.3%	508	7.9%
9 months - < 1 year	361	6.0%	29	8.2%	390	6.1%
1 - < 2 years	756	12.5%	44	12.4%	800	12.5%
2 - < 5 years	1229	20.3%	64	18.1%	1293	20.2%
5 - < 7 years	576	9.5%	24	6.8%	600	9.4%
7 - < 10 years	511	8.4%	14	4.0%	525	8.2%
10 - < 15 years	309	5.1%	9	2.5%	318	5.0%
15 - < 20 years	134	2.2%	6	1.7%	140	2.2%
20 years +	114	1.9%	2	0.6%	116	1.8%
Life	114	1.9%	1	0.3%	115	1.8%
Forensic Patient	42	0.7%	-	-	42	0.7%
TOTAL	6057	100.0%	354	100.0%	6411	100.0%

Table 2.4: Inmate security classification

	GENDER OF INMATE				TOTAL	
	Male		Female			
Classification of inmate						
A1	5	0.1%	-	-	5	0.1%
A2	422	7.0%	9	2.5%	431	6.7%
B	793	13.1%	33	9.3%	826	12.9%
C1	1062	17.5%	45	12.7%	1107	17.3%
C2	1973	32.6%	140	39.5%	2113	33.0%
C3	477	7.9%	29	8.2%	506	7.9%
Category 2 (Female)	-	-	2	0.6%	2	0.0%
E1	52	0.9%	1	0.3%	53	0.8%
E2	287	4.7%	13	3.7%	300	4.7%
Remand/Trial	919	15.2%	72	20.3%	991	15.5%
Unclassified	67	1.1%	10	2.8%	77	1.2%
TOTAL	6057	100.0%	354	100.0%	6411	100.0%

Table 2.5: Location and correctional centre security classification

	GENDER OF INMATE				TOTAL	
	Male		Female			
Correctional Centre by security rating						
Maximum security						
Goulburn (Main)	399	5.3%	-	-	399	5.0%
Maitland	131	1.8%	-	-	131	1.6%
Special Purpose Centre	54	0.7%	1	0.2%	55	0.7%
Long Bay Hospital	110	1.5%	1	0.2%	111	1.4%
Reception and Induction Centre	240	3.2%	-	-	240	3.0%
Special Care Centre	106	1.4%	-	-	106	1.3%
Remand Centre	368	4.9%	-	-	368	4.6%
Lithgow	284	3.8%	-	-	284	3.6%
Metropolitan Remand and Reception Centre	120	1.6%	-	-	120	1.5%
Sub-total Maximum security	1812	24.2%	2	0.4%	1814	22.8%
Medium security						
Bathurst (Main)	229	3.1%	-	-	229	2.9%
Broken Hill	41	0.5%	1	0.2%	42	0.5%
Cooma	86	1.2%	-	-	86	1.1%
Grafton (Main)	134	1.8%	-	-	134	1.7%
Mulawa	-	-	202	42.0%	202	2.5%
Parramatta	283	3.8%	-	-	283	3.6%
Parklea	293	3.9%	-	-	293	3.7%
Junee - Medium	369	4.9%	1	0.2%	370	4.7%
Tamworth	35	0.5%	-	-	35	0.4%
Sub-total Medium security	1470	19.7%	204	42.4%	1674	21.0%
Minimum security						
Berrima	68	0.9%	-	-	68	0.9%
Emu Plains	-	-	105	21.8%	105	1.3%
Norma Parker	-	-	20	4.2%	20	0.3%
Silverwater	389	5.2%	-	-	389	4.9%
Goulburn X-Wing	111	1.5%	-	-	111	1.4%
Bathurst X-Wing	90	1.2%	-	-	90	1.1%
Grafton C-Unit	107	1.4%	15	3.1%	122	1.5%
Junee - Minimum	224	3.0%	-	-	224	2.8%
Industrial Training Centre	289	3.9%	-	-	289	3.6%
St Heliers	251	3.4%	-	-	251	3.2%
Glen Innes	119	1.6%	-	-	119	1.5%
Mannus	123	1.6%	-	-	123	1.5%
Oberon	97	1.3%	-	-	97	1.2%
Kirkconnell	204	2.7%	-	-	204	2.6%
John Morony	238	3.2%	-	-	238	3.0%
Cessnock	432	5.8%	-	-	432	5.4%
Malabar Fines Unit	33	0.4%	-	-	33	0.4%
Parramatta Transitional Centre	-	-	8	1.7%	8	0.1%
Sub-total Minimum security	2775	37.1%	148	30.8%	2923	36.7%
SUB- TOTAL Full-time custody	6057	81.0%	354	73.6%	6411	80.6%

Table 2.6: Country of birth

	GENDER OF INMATE				TOTAL	
	Male		Female			
COUNTRY OF BIRTH						
OCEANIA AND ANTARCTICA						
AUSTRALIA	4284	70.7%	217	61.3%	4501	70.2%
- New South Wales	3636	60.0%	182	51.4%	3818	59.6%
- Victoria	190	3.1%	8	2.3%	198	3.1%
- Queensland	128	2.1%	7	2.0%	135	2.1%
- South Australia	34	0.6%	3	0.8%	37	0.6%
- Western Australia	30	0.5%	2	0.6%	32	0.5%
- Tasmania	26	0.4%	-	-	26	0.4%
- Northern Territory	8	0.1%	-	-	8	0.1%
- Australian Capital Territory	61	1.0%	3	0.8%	64	1.0%
- Australia (not further defined - nfd)	171	2.8%	12	3.4%	183	2.9%
NEW ZEALAND	168	2.8%	8	2.3%	176	2.7%
PAPUA NEW GUINEA	9	0.1%	-	-	9	0.1%
POLYNESIA (excl. Hawaii)	91	1.5%	-	-	91	1.4%
- Cook Islands	4	0.1%	-	-	4	0.1%
- Fiji	38	0.6%	-	-	38	0.6%
- American Samoa	10	0.2%	-	-	10	0.2%
- Western Samoa	15	0.2%	-	-	15	0.2%
- Tonga	23	0.4%	-	-	23	0.4%
- Tuvalu	1	0.0%	-	-	1	0.0%
OCEANIA (nfd)	-	-	-	-	-	-
Sub-total OCEANIA AND ANTARCTICA	4552	75.2%	225	63.6%	4777	74.5%
EUROPE AND THE USSR						
THE UNITED KINGDOM AND IRELAND	207	3.4%	10	2.8%	217	3.4%
- England	154	2.5%	7	2.0%	161	2.5%
- Scotland	30	0.5%	2	0.6%	32	0.5%
- Wales	7	0.1%	1	0.3%	8	0.1%
- Northern Ireland	4	0.1%	-	-	4	0.1%
- Ireland	12	0.2%	-	-	12	0.2%
SOUTHERN EUROPE	166	2.7%	3	0.8%	169	2.6%
- Albania	3	0.0%	-	-	3	0.0%
- Cyprus	5	0.1%	-	-	5	0.1%
- Greece	28	0.5%	-	-	28	0.4%
- Italy	46	0.8%	1	0.3%	47	0.7%
- Malta	16	0.3%	-	-	16	0.3%
- Portugal	7	0.1%	-	-	7	0.1%
- Spain	12	0.2%	-	-	12	0.2%
- Bosnia-Herzegovina	5	0.1%	-	-	5	0.1%
- Croatia	5	0.1%	-	-	5	0.1%
- Fmr Yugoslav Rep. Macedonia	13	0.2%	-	-	13	0.2%

Table 2.6: Country of birth (continued)

	GENDER OF INMATE				TOTAL	
	Male		Female			
COUNTRY OF BIRTH						
SOUTHERN EUROPE (cont.)						
- <i>Slovenia</i>	1	0.0%	-	-	1	0.0%
- <i>Fmr Rep. Serbia & Montenegro</i>	3	0.0%	-	-	3	0.0%
- <i>Fmr Yugoslav Republic (nfd)</i>	22	0.4%	2	0.6%	24	0.4%
WESTERN EUROPE	43	0.7%	1	0.3%	44	0.7%
- <i>Austria</i>	-	-	-	-	-	-
- <i>Belgium</i>	3	0.0%	-	-	3	0.0%
- <i>France</i>	9	0.1%	-	-	9	0.1%
- <i>Federal Republic of Germany</i>	20	0.3%	1	0.3%	21	0.3%
- <i>Netherlands</i>	11	0.2%	-	-	11	0.2%
NORTHERN EUROPE	7	0.1%	1	0.3%	8	0.1%
- <i>Denmark</i>	-	-	-	-	-	-
- <i>Finland</i>	4	0.1%	-	-	4	0.1%
- <i>Sweden</i>	3	0.0%	1	0.3%	4	0.1%
EASTERN EUROPE	50	0.8%	3	0.8%	53	0.8%
- <i>Bulgaria</i>	1	0.0%	-	-	1	0.0%
- <i>Hungary</i>	6	0.1%	1	0.3%	7	0.1%
- <i>Poland</i>	3	0.0%	1	0.3%	4	0.1%
- <i>Romania</i>	34	0.6%	-	-	34	0.5%
- <i>Czech Republic</i>	6	0.1%	1	0.3%	7	0.1%
USSR AND BALTIC STATES	2	0.0%	-	-	2	0.0%
- <i>USSR (nfd)</i>	2	0.0%	-	-	2	0.0%
Sub-total						
EUROPE AND THE USSR	475	7.8%	18	5.1%	493	7.7%
MIDDLE EAST AND NORTH AFRICA						
MIDDLE EAST	152	2.5%	2	0.6%	154	2.4%
- <i>Bahrain</i>	-	-	-	-	-	-
- <i>Iran</i>	5	0.1%	-	-	5	0.1%
- <i>Iraq</i>	7	0.1%	-	-	7	0.1%
- <i>Israel</i>	9	0.1%	-	-	9	0.1%
- <i>Jordan</i>	7	0.1%	-	-	7	0.1%
- <i>Lebanon</i>	99	1.6%	2	0.6%	101	1.6%
- <i>Syria</i>	3	0.0%	-	-	3	0.0%
- <i>Turkey</i>	22	0.4%	-	-	22	0.3%
NORTH AFRICA	13	0.2%	-	-	13	0.2%
- <i>Algeria</i>	2	0.0%	-	-	2	0.0%
- <i>Egypt</i>	9	0.1%	-	-	9	0.1%
- <i>Morocco</i>	1	0.0%	-	-	1	0.0%
- <i>Tunisia</i>	1	0.0%	-	-	1	0.0%
Sub-total						
MIDDLE EAST AND NORTH AFRICA	165	2.7%	2	0.6%	167	2.6%

Table 2.6: Country of birth (continued)

	GENDER OF INMATE				TOTAL	
	Male		Female			
COUNTRY OF BIRTH						
SOUTHEAST ASIA						
- Cambodia	17	0.3%	-	-	17	0.3%
- Indonesia	12	0.2%	-	-	12	0.2%
- Laos	17	0.3%	2	0.6%	19	0.3%
- Malaysia	21	0.3%	2	0.6%	23	0.4%
- Burma (Myanmar)	-	-	-	-	-	-
- Philippines	23	0.4%	1	0.3%	24	0.4%
- Singapore	18	0.3%	2	0.6%	20	0.3%
- Thailand	10	0.2%	2	0.6%	12	0.2%
- Vietnam	215	3.6%	13	3.7%	228	3.6%
Sub-total SOUTHEAST ASIA	333	5.5%	22	6.2%	355	5.5%
NORTHEAST ASIA						
- China (excl. Taiwan)	43	0.7%	1	0.3%	44	0.7%
- Hong Kong	28	0.5%	1	0.3%	29	0.5%
- Japan	5	0.1%	-	-	5	0.1%
- North Korea	9	0.1%	-	-	9	0.1%
- South Korea	4	0.1%	-	-	4	0.1%
- Taiwan	2	0.0%	-	-	2	0.0%
Sub-total NORTHEAST ASIA	91	1.5%	2	0.6%	93	1.5%
SOUTHERN ASIA						
SOUTHERN ASIA	18	0.3%	-	-	18	0.3%
- India	11	0.2%	-	-	11	0.2%
- Nepal	2	0.0%	-	-	2	0.0%
- Pakistan	2	0.0%	-	-	2	0.0%
- Sri Lanka	3	0.0%	-	-	3	0.0%
ASIA (nfd)	1	0.0%	-	-	1	0.0%
Sub-total SOUTHERN ASIA	19	0.3%	-	-	19	0.3%
NORTH AMERICA						
- Canada	3	0.0%	-	-	3	0.0%
- United States of America	11	0.2%	1	0.3%	12	0.2%
Sub-total NORTH AMERICA	14	0.2%	1	0.3%	15	0.2%

Table 2.6: Country of birth (continued)

	GENDER OF INMATE				TOTAL	
	Male		Female			
COUNTRY OF BIRTH						
SOUTH AMERICA, CENTRAL AMERICA AND THE CARIBBEAN						
SOUTH AMERICA	42	0.7%	5	1.4%	47	0.7%
- Argentina	5	0.1%	-	-	5	0.1%
- Bolivia	1	0.0%	-	-	1	0.0%
- Brazil	4	0.1%	-	-	4	0.1%
- Chile	6	0.1%	3	0.8%	9	0.1%
- Colombia	11	0.2%	2	0.6%	13	0.2%
- Peru	4	0.1%	-	-	4	0.1%
- Uruguay	7	0.1%	-	-	7	0.1%
- Venezuela	4	0.1%	-	-	4	0.1%
CENTRAL AMERICA	8	0.1%	-	-	8	0.1%
- El Salvador	4	0.1%	-	-	4	0.1%
- Mexico	1	0.0%	-	-	1	0.0%
- Nicaragua	3	0.0%	-	-	3	0.0%
THE CARIBBEAN	1	0.0%	-	-	1	0.0%
- The Caribbean (nfd)	-	-	-	-	-	-
- Cuba	1	0.0%	-	-	1	0.0%
AMERICA (nfd)	17	0.3%	1	0.3%	18	0.3%
Sub-total						
SOUTH AMERICA, CENTRAL AMERICA AND THE CARIBBEAN	68	1.1%	6	1.7%	74	1.2%
AFRICA (excluding North Africa)						
CENTRAL AND WEST AFRICA	2	0.0%	-	-	2	0.0%
- Ghana	2	0.0%	-	-	2	0.0%
SOUTHERN AND EAST AFRICA	9	0.1%	-	-	9	0.1%
- Mauritius	1	0.0%	-	-	1	0.0%
- South Africa	7	0.1%	-	-	7	0.1%
- Zimbabwe	1	0.0%	-	-	1	0.0%
AFRICA (nfd)	1	0.0%	-	-	1	0.0%
Sub-total						
AFRICA (excluding North Africa)	12	0.2%	-	-	12	0.2%
Unknown	328	5.4%	78	22.0%	406	6.3%
TOTAL	6057	100.0%	354	100.0%	6411	100.0%

Table 2.7: Statistical subdivision (SSD) of last known address

	GENDER OF INMATE				TOTAL	
	Male		Female			
Statistical Subdivision (SSD)						
New South Wales						
Inner Sydney	502	8.3%	29	8.2%	531	8.3%
Eastern Suburbs	150	2.5%	10	2.8%	160	2.5%
St. George - Sutherland	174	2.9%	10	2.8%	184	2.9%
Canterbury - Bankstown	229	3.8%	9	2.5%	238	3.7%
Fairfield - Liverpool	453	7.5%	21	5.9%	474	7.4%
Outer South Western Sydney	226	3.7%	12	3.4%	238	3.7%
Inner Western Sydney	106	1.8%	6	1.7%	112	1.7%
Central Western Sydney	251	4.1%	14	4.0%	265	4.1%
Outer Western Sydney	209	3.5%	5	1.4%	214	3.3%
Blacktown - Baulkham Hills	348	5.7%	16	4.5%	364	5.7%
Lower Northern Sydney	101	1.7%	5	1.4%	106	1.7%
Hornsby - Ku-ring-gai	44	0.7%	1	0.3%	45	0.7%
Northern Beaches	70	1.2%	4	1.1%	74	1.2%
Gosford - Wyong	188	3.1%	11	3.1%	199	3.1%
Sub-total Sydney Statistical Division	3051	50.4%	153	43.2%	3204	50.0%
Newcastle	431	7.1%	14	4.0%	445	6.9%
Hunter (excl. Newcastle)	45	0.7%	-	-	45	0.7%
Wollongong	227	3.7%	12	3.4%	239	3.7%
Illawarra (excl. Wollongong)	25	0.4%	-	-	25	0.4%
Tweed Heads	14	0.2%	-	-	14	0.2%
Richmond - Tweed (excl. Tweed Heads)	110	1.8%	5	1.4%	115	1.8%
Clarence	103	1.7%	5	1.4%	108	1.7%
Hastings	118	1.9%	5	1.4%	123	1.9%
Northern Slopes	61	1.0%	3	0.8%	64	1.0%
Northern Tablelands	54	0.9%	3	0.8%	57	0.9%
North Central Plain	55	0.9%	-	-	55	0.9%
Central Macquarie	135	2.2%	9	2.5%	144	2.2%
Macquarie - Barwon	45	0.7%	3	0.8%	48	0.7%
Upper Darling	36	0.6%	-	-	36	0.6%
Bathurst - Orange	59	1.0%	2	0.6%	61	1.0%
Central Tablelands (excl. Bath-Orange)	32	0.5%	-	-	32	0.5%
Lachlan	60	1.0%	3	0.8%	63	1.0%
Queanbeyan	34	0.6%	3	0.8%	37	0.6%
Southern Tablelands (excl. Queanbeyan)	42	0.7%	-	-	42	0.7%
Lower South Coast	28	0.5%	-	-	28	0.4%
Snowy	6	0.1%	-	-	6	0.1%
Central Murrumbidgee	64	1.1%	5	1.4%	69	1.1%
Lower Murrumbidgee	23	0.4%	-	-	23	0.4%
Albury	35	0.6%	1	0.3%	36	0.6%
Upper Murray (excl. Albury)	6	0.1%	-	-	6	0.1%
Central Murray	8	0.1%	-	-	8	0.1%
Murray - Darling	7	0.1%	-	-	7	0.1%
Far West	40	0.7%	-	-	40	0.6%
Sub-total (excl. Sydney SD)	1903	31.4%	73	20.6%	1976	30.8%
Sub-total New South Wales	4954	81.8%	226	63.8%	5180	80.8%

Table 2.7: Statistical subdivision (SSD) of last known address (continued)

	GENDER OF INMATE				TOTAL	
	Male		Female			
Statistical Subdivision (SSD)						
Other States/Territories						
Victoria	50	0.8%	1	0.3%	51	0.8%
Queensland	85	1.4%	3	0.8%	88	1.4%
South Australia	20	0.3%	1	0.3%	21	0.3%
Western Australia	14	0.2%	-	-	14	0.2%
Tasmania	7	0.1%	-	-	7	0.1%
Northern Territory	1	0.0%	-	-	1	0.0%
Australian Capital Territory	51	0.8%	1	0.3%	52	0.8%
Sub-total Other States/Territories	228	3.8%	6	1.7%	234	3.7%
No fixed abode	249	4.1%	12	3.4%	261	4.1%
Unknown	594	9.8%	110	31.1%	704	11.0%
Overseas	32	0.5%	-	-	32	0.5%
TOTAL	6057	100.0%	354	100.0%	6411	100.0%

**PERIODIC
DETAINEEES**

Blank Page

PERIODIC DETAINEES

Statistical Summary

⇒	TOTAL NUMBER OF PERSONS				1546	
⇒	GENDER	Male			1419	(92%)
		Female			127	(8%)
⇒	ABORIGINALITY	Aboriginal/TSI			98	(6.3%)
		Non-Aboriginal/TSI			1423	(92.0%)
		Unknown			25	(1.6%)
⇒	AGE					
			Male	Female		Total
	18 - 24 years	465	32.8%	28	22.0%	493 31.9%
	25 - 34 years	515	36.3%	45	35.4%	560 36.2%
	35 - 44 years	277	19.5%	27	21.3%	304 19.7%
	45 years +	162	11.4%	27	21.3%	189 12.2%
	Total	1419	100%	127	100.0%	1546 100.0%
⇒	COUNTRY OF BIRTH	Australian born			1181	(76%)
		Overseas born			365	(24%)
⇒	ENGLISH SPEAKING BACKGROUND STATUS OF COUNTRY OF BIRTH	English speaking country			1286	(83%)
		Non-English speaking country			260	(17%)
⇒	PRIOR ADULT IMPRISONMENT	Yes			428	(28%)
		No			1118	(72%)
⇒	MAXIMUM PERIOD OF IMPRISONMENT	1 to 20 weeks			270	(17.5%)
		21 to 40 weeks			629	(40.7%)
		41 to 100 weeks			396	(25.6%)
		101 weeks +			251	(16.2%)

Table 3.1: Demographic characteristics

	GENDER OF INMATE				TOTAL	
	Male		Female			
Age at Census date (years)						
18	14	1.0%	-	-	14	0.9%
19	57	4.0%	4	3.2%	61	3.9%
20	83	5.8%	3	2.4%	86	5.6%
21-22	149	10.5%	12	9.4%	161	10.4%
23-24	162	11.4%	9	7.1%	171	11.1%
25-29	281	19.8%	22	17.3%	303	19.6%
30-34	234	16.5%	23	18.1%	257	16.6%
35-39	170	12.0%	18	14.2%	188	12.2%
40-44	107	7.5%	9	7.1%	116	7.5%
45-49	68	4.8%	14	11.0%	82	5.3%
50-54	47	3.3%	7	5.5%	54	3.5%
55-59	22	1.6%	3	2.4%	25	1.6%
60-64	8	0.6%	2	1.6%	10	0.6%
65 +	17	1.2%	1	0.8%	18	1.2%
Aboriginality						
Aboriginal/Torres Strait Is.	83	5.8%	15	11.8%	98	6.3%
Other	1312	92.5%	111	87.4%	1423	92.0%
Unknown	24	1.7%	1	0.8%	25	1.6%
Known prior imprisonment as an adult						
Yes	412	29.0%	16	12.6%	428	27.7%
No	1007	71.0%	111	87.4%	1118	72.3%
Marital status at reception						
Never married	730	51.4%	47	37.0%	777	50.3%
Married/de-facto	484	34.1%	44	34.6%	528	34.2%
Separated	75	5.3%	12	9.4%	87	5.6%
Divorced	76	5.4%	15	11.8%	91	5.9%
Widowed	5	0.4%	4	3.2%	9	0.6%
Unknown	49	3.5%	5	3.9%	54	3.5%
Main Non-English speaking background countries						
Non-English speaking	243	17.1%	17	13.4%	260	16.8%
English speaking	1176	82.9%	110	86.6%	1286	83.2%
TOTAL	1419	100.0%	127	100.0%	1546	100.0%

Table 3.2: Legal status characteristics

	GENDER OF INMATE				TOTAL	
	Male		Female			
Legal status						
Sentenced - no appeal	1419	100%	127	100%	1546	100%
Type of sentence						
Periodic Detention	1419	100%	127	100%	1546	100%
Level of Court						
Supreme	30	2.1%	3	2.4%	33	2.1%
District	591	41.6%	61	48.0%	652	42.2%
Local	798	56.2%	63	49.6%	861	55.7%
State of Court						
New South Wales	1419	100.0%	127	100.0%	1546	100.0%
Is any offence a federal offence ?						
Yes	3	0.2%	-	-	3	0.2%
No	1416	99.8%	127	100.0%	1543	99.8%
TOTAL	1419	100.0%	127	100.0%	1546	100.0%

Table 3.3: Characteristics of sentences

	GENDER OF INMATE				TOTAL	
	Male		Female			
Most serious offence						
Manslaughter	1	0.1%	1	0.8%	2	0.1%
Major assault	132	9.3%	3	2.4%	135	8.7%
Other assault	88	6.2%	2	1.6%	90	5.8%
Serious sexual assault	25	1.8%	-	-	25	1.6%
Incest/carnal knowledge	5	0.4%	-	-	5	0.3%
Indecent assault	43	3.0%	-	-	43	2.8%
Buggary/bestiality	-	-	-	-	-	-
Robbery with major assault	33	2.3%	1	0.8%	34	2.2%
Other robbery	26	1.8%	6	4.7%	32	2.1%
Fraud	134	9.4%	42	33.1%	176	11.4%
Break, enter and steal	106	7.5%	11	8.7%	117	7.6%
Other steal	175	12.3%	17	13.4%	192	12.4%
Driving/traffic	304	21.4%	10	7.9%	314	20.3%
Offences against order	123	8.7%	10	7.9%	133	8.6%
Drug offences	206	14.5%	23	18.1%	229	14.8%
Other offences	18	1.3%	1	0.8%	19	1.2%
Periodic detention sentence						
1 - 20 weeks	249	17.5%	21	16.5%	270	17.5%
21 - 40 weeks	587	41.4%	42	33.1%	629	40.7%
41 - 60 weeks	207	14.6%	20	15.7%	227	14.7%
61 - 80 weeks	144	10.1%	22	17.3%	166	10.7%
81 -100 weeks	3	0.2%	-	-	3	0.2%
101 - 120 weeks	104	7.3%	8	6.3%	112	7.2%
120 + weeks	125	8.8%	14	11.0%	139	9.0%
Is the inmate serving a term for breach of parole, license or escape ?						
No Breach	1419	100.0%	127	100.0%	1546	100.0%
Classification of inmate						
Periodic detainee	1419	100.0%	127	100.0%	1546	100.0%
TOTAL	1419	100.0%	127	100.0%	1546	100.0%

Table 3.4: Location of detainees

	GENDER OF INMATE				TOTAL	
	Male		Female			
Periodic detention centres						
PD Administration Weekend	20	1.4%	4	3.2%	24	1.6%
PD Administration Mid-Week	8	0.6%	-	-	8	0.5%
Campbelltown Weekend PDC	112	7.9%	-	-	112	7.2%
Campbelltown Mid-Week PDC	64	4.5%	-	-	64	4.1%
Emu Plains PDC	-	-	96	75.6%	96	6.2%
Grafton PDC	61	4.3%	-	-	61	3.9%
Malabar Weekend PDC	147	10.4%	-	-	147	9.5%
Malabar Mid-Week PDC	77	5.4%	-	-	77	5.0%
Mannus PDC	30	2.1%	5	3.9%	35	2.3%
Parramatta PDC	87	6.1%	-	-	87	5.6%
Silverwater Weekend PDC	200	14.1%	-	-	200	12.9%
Silverwater Mid-Week PDC	147	10.4%	-	-	147	9.5%
Tamworth PDC	23	1.6%	-	-	23	1.5%
Tomago PDC	167	11.8%	22	17.3%	189	12.2%
Windsor PDC	175	12.3%	-	-	175	11.3%
Wollongong PDC	101	7.1%	-	-	101	6.5%
Correctional centre security rating						
Periodic detention	1419	100.0%	127	100.0%	1546	100.0%
TOTAL	1419	100.0%	127	100.0%	1546	100.0%

Table 3.5: Country of birth

	GENDER OF INMATE				TOTAL	
	Male		Female			
COUNTRY OF BIRTH						
OCEANIA AND ANTARCTICA						
AUSTRALIA	1082	76.3%	99	78.0%	1181	76.4%
- New South Wales	991	69.8%	93	73.2%	1084	70.1%
- Victoria	17	1.2%	3	2.4%	20	1.3%
- Queensland	19	1.3%	1	0.8%	20	1.3%
- South Australia	4	0.3%	-	-	4	0.3%
- Western Australia	4	0.3%	-	-	4	0.3%
- Tasmania	2	0.1%	1	0.8%	3	0.2%
- Australian Capital Territory	14	1.0%	-	-	14	0.9%
- Australia (not further defined - nfd)	31	2.2%	1	-	32	2.1%
NEW ZEALAND	46	3.2%	6	4.7%	52	3.4%
PAPUA NEW GUINEA	3	0.2%	-	-	3	0.2%
POLYNESIA (excl. Hawaii)	18	1.3%	2	1.6%	20	1.3%
- Cook Islands	2	0.1%	1	0.8%	3	0.2%
- Fiji	7	0.5%	-	-	7	0.5%
- Western Samoa	2	0.1%	1	0.8%	3	0.2%
- Tonga	7	0.5%	-	-	7	0.5%
OCEANIA (nfd)	4	0.3%	-	-	4	0.3%
Sub-total						
OCEANIA AND ANTARCTICA	1153	81.3%	107	84.3%	1260	81.5%
EUROPE AND THE USSR						
THE UNITED KINGDOM AND IRELAND	42	3.0%	5	3.9%	47	3.0%
- England	31	2.2%	3	2.4%	34	2.2%
- Scotland	9	0.6%	1	0.8%	10	0.6%
- Wales	-	-	1	0.8%	1	0.1%
- Northern Ireland	2	0.1%	-	-	2	0.1%
SOUTHERN EUROPE	34	2.4%	3	2.4%	37	2.4%
- Greece	9	0.6%	-	-	9	0.6%
- Italy	8	0.6%	2	1.6%	10	0.6%
- Spain	1	0.1%	-	-	1	0.1%
- Fmr Yugoslav Republic (nfd)	16	1.1%	1	0.8%	17	1.1%
WESTERN EUROPE	9	0.6%	3	2.4%	12	0.8%
- Austria	1	0.1%	1	0.8%	2	0.1%
- France	1	0.1%	-	-	1	0.1%
- Federal Republic of Germany	4	0.3%	2	1.6%	6	0.4%
- Netherlands	3	0.2%	-	-	3	0.2%

Table 3.5: Country of birth (continued)

	GENDER OF INMATE				TOTAL	
	Male		Female			
COUNTRY OF BIRTH						
EASTERN EUROPE	9	0.6%	2	1.6%	11	0.7%
- Denmark	1	0.1%	-	-	1	0.1%
- Hungary	2	0.1%	1	0.8%	3	0.2%
- Poland	2	0.1%	-	-	2	0.1%
- Romania	4	0.3%	1	0.8%	5	0.3%
USSR AND BALTIC STATES	2	0.1%	-	-	2	0.1%
- USSR (nfd)	2	0.1%	-	-	2	0.1%
Sub-total						
EUROPE AND THE USSR	96	6.8%	13	10.2%	109	7.1%
MIDDLE EAST AND NORTH AFRICA						
MIDDLE EAST	40	2.8%	1	0.8%	41	2.7%
- Bahrain	2	0.1%	-	-	2	0.1%
- Iran	2	0.1%	-	-	2	0.1%
- Iraq	4	0.3%	-	-	4	0.3%
- Lebanon	25	1.8%	-	-	25	1.6%
- Turkey	7	0.5%	1	0.8%	8	0.5%
NORTH AFRICA	2	0.1%	-	-	2	0.1%
- Egypt	2	0.1%	-	-	2	0.1%
Sub-total						
MIDDLE EAST AND NORTH AFRICA	42	3.0%	1	0.8%	43	2.8%
SOUTHEAST ASIA						
- Cambodia	2	0.1%	-	-	2	0.1%
- Indonesia	1	0.1%	-	-	1	0.1%
- Laos	7	0.5%	-	-	7	0.5%
- Malaysia	1	0.1%	-	-	1	0.1%
- Burma (Myanmar)	2	0.1%	-	-	2	0.1%
- Philippines	2	0.1%	1	0.8%	3	0.2%
- Singapore	2	0.1%	-	-	2	0.1%
- Thailand	1	0.1%	1	0.8%	2	0.1%
- Vietnam	29	2.0%	-	-	29	1.9%
Sub-total						
SOUTHEAST ASIA	2	0.1%	-	0.0%	2	0.1%
NORTHEAST ASIA						
- China (excl. Taiwan)	11	0.8%	-	-	11	0.7%
- Hong Kong	4	0.3%	-	-	4	0.3%
- North Korea	6	0.4%	-	-	6	0.4%
Sub-total						
NORTHEAST ASIA	11	0.8%	-	-	11	0.7%

Table 3.5: Country of birth (continued)

	GENDER OF INMATE				TOTAL	
	Male		Female			
COUNTRY OF BIRTH						
SOUTHERN ASIA						
SOUTHERN ASIA	2	0.1%	-	-	2	0.1%
- India	1	0.1%	-	-	1	0.1%
- Pakistan	1	0.1%	-	-	1	0.1%
ASIA (nfd)	2	0.1%	-	-	2	0.1%
Sub-total						
SOUTHERN ASIA	4	0.3%	-	-	4	0.3%
NORTH AMERICA						
- Canada	1	0.1%	-	-	1	0.1%
- United States of America	2	0.1%	-	-	2	0.1%
Sub-total						
NORTH AMERICA	1	0.1%	-	-	3	0.2%
SOUTH AMERICA, CENTRAL AMERICA AND THE CARIBBEAN						
SOUTH AMERICA	6	0.4%	-	-	6	0.4%
- Argentina	1	0.1%	-	-	1	0.1%
- Chile	1	0.1%	-	-	1	0.1%
- Peru	2	0.1%	-	-	2	0.1%
- Uruguay	2	0.1%	-	-	2	0.1%
CENTRAL AMERICA	-	-	1	0.8%	1	0.1%
- Mexico	-	-	1	0.8%	1	0.1%
THE CARIBBEAN	1	0.1%	-	-	1	0.1%
- The Caribbean (nfd)	1	0.1%	-	-	1	0.1%
AMERICA (nfd)	2	0.1%	-	-	2	0.1%
Sub-total						
SOUTH AMERICA, CENTRAL AMERICA AND THE CARIBBEAN	9	0.6%	1	0.8%	10	0.6%
AFRICA (excluding North Africa)						
CENTRAL AND WEST AFRICA	1	0.1%	-	-	1	0.1%
- Kenya	1	0.1%	-	-	1	0.1%
SOUTHERN AND EAST AFRICA	3	0.2%	-	-	3	0.2%
- South Africa	3	0.2%	-	-	3	0.2%
AFRICA (nfd)	1	0.1%	-	-	1	0.1%
Sub-total						
AFRICA (excluding North Africa)	5	0.4%	-	-	5	0.3%
Unknown	39	2.7%	3	2.4%	42	2.7%
TOTAL	1419	100.0%	127	100.0%	1546	100.0%

Table 3.6: Statistical subdivision (SSD) of last known address

	GENDER OF INMATE				TOTAL	
	Male		Female			
Statistical Subdivision (SSD)						
New South Wales						
Inner Sydney	75	5.3%	7	5.5%	82	5.3%
Eastern Suburbs	35	2.5%	2	1.6%	37	2.4%
St. George - Sutherland	75	5.3%	7	5.5%	82	5.3%
Canterbury - Bankstown	78	5.5%	5	3.9%	83	5.4%
Fairfield - Liverpool	133	9.4%	16	12.6%	149	9.6%
Outer South Western Sydney	85	6.0%	9	7.1%	94	6.1%
Inner Western Sydney	32	2.3%	1	0.8%	33	2.1%
Central Western Sydney	75	5.3%	4	3.2%	79	5.1%
Outer Western Sydney	90	6.3%	8	6.3%	98	6.3%
Blacktown - Baulkham Hills	142	10.0%	13	10.2%	155	10.0%
Lower Northern Sydney	30	2.1%	3	2.4%	33	2.1%
Hornsby - Ku-ring-gai	13	0.9%	1	0.8%	14	0.9%
Northern Beaches	44	3.1%	3	2.4%	47	3.0%
Gosford - Wyong	68	4.8%	12	9.4%	80	5.2%
Sub-total Sydney Statistical Division	975	68.7%	91	71.7%	1066	69.0%
Newcastle	120	8.5%	12	9.4%	132	8.5%
Hunter (excl. Newcastle)	14	1.0%	1	0.8%	15	1.0%
Wollongong	103	7.3%	7	5.5%	110	7.1%
Illawarra (excl. Wollongong)	5	0.4%	1	0.8%	6	0.4%
Tweed Heads	4	0.3%	-	-	4	0.3%
Richmond - Tweed (excl. Tweed Heads)	16	1.1%	-	-	16	1.0%
Clarence	19	1.3%	-	-	19	1.2%
Hastings	6	0.4%	-	-	6	0.4%
Northern Slopes	14	1.0%	1	0.8%	15	1.0%
Northern Tablelands	11	0.8%	-	-	11	0.7%
Central Macquarie	4	0.3%	-	-	4	0.3%
Macquarie - Barwon	1	0.1%	-	-	1	0.1%
Bathurst - Orange	6	0.4%	1	0.8%	7	0.5%
Central Tablelands (excl. Bath-Orange)	10	0.7%	1	0.8%	11	0.7%
Lachlan	1	0.1%	-	-	1	0.1%
Queanbeyan	3	0.2%	-	-	3	0.2%
Southern Tablelands (excl. Queanbeyan)	11	0.8%	-	-	11	0.7%
Lower South Coast	3	0.2%	1	0.8%	4	0.3%
Central Murrumbidgee	17	1.2%	2	1.6%	19	1.2%
Lower Murrumbidgee	3	0.2%	-	-	3	0.2%
Albury	2	0.1%	2	1.6%	4	0.3%
Upper Murray (excl. Albury)	2	0.1%	-	-	2	0.1%
Murray - Darling	1	0.1%	-	-	1	0.1%
Sub-total NSW (excl. Sydney SD)	376	26.5%	29	22.8%	405	26.2%
Sub-total New South Wales	1351	95.2%	120	94.5%	1471	95.1%

Table 3.6: Statistical subdivision (SSD) of last known address (continued)

	GENDER OF INMATE				TOTAL	
	Male		Female			
Statistical Subdivision (SSD)						
Other States/Territories						
Queensland	5	0.4%	-	-	5	0.3%
Australian Capital Territory	3	0.2%	1	0.8%	4	0.3%
Sub-total Other States/Territories	8	0.6%	1	0.8%	9	0.6%
Unknown	60	4.2%	6	4.7%	66	4.3%
TOTAL	1419	100%	127	100%	1546	100%

**MOST SERIOUS
OFFENCE:**

**AGGREGATE SENTENCE
(SENTENCED INMATES)
AND
TIME IN CUSTODY
(UNSENTENCED INMATES)**

Blank Page

Table 4.11 Most serious offence by aggregate sentence imposed - Sentenced male inmates in full-time custody

Most serious offence	Aggregate sentence														TOTAL
	< 1 month	1 - < 3 months	3 - < 6 months	6 - < 9 months	9 - < 12 months	1 - < 2 years	2 - < 5 years	5 - < 7 years	7 - < 10 years	10 - < 15 years	15 - < 20 years	20+ years	Life	Forensic Patient	
Murder	-	-	-	-	1	-	3	3	4	50	66	83	103	12	325
Attempt murder	-	-	-	-	-	-	-	2	3	6	3	1	2	9	26
Conspiracy to murder	-	-	-	-	-	-	2	3	1	1	-	-	-	-	7
Manslaughter	-	-	-	-	-	1	10	15	34	13	5	2	4	1	85
Major assault	3	5	35	53	35	106	105	36	22	23	9	2	2	7	443
Other assault	17	11	43	50	24	28	17	6	9	3	1	3	-	2	214
Rape	-	-	-	-	-	-	-	1	1	3	-	1	-	1	7
Serious sexual assault	-	-	1	-	4	11	126	96	91	51	7	3	-	4	394
Incest/carnal knowledge	-	-	-	-	1	2	33	35	29	9	2	-	-	-	111
Indecent assault	1	-	3	5	2	16	22	6	3	-	-	-	-	1	59
Buggery/bestiality	-	-	-	-	-	-	2	1	4	2	-	-	-	1	10
Robbery major assault	-	2	1	8	6	34	185	124	118	66	21	6	-	-	571
Other robbery	-	2	4	7	3	30	127	48	22	7	3	1	-	-	254
Fraud	3	4	15	15	12	30	63	18	8	1	-	-	-	1	170
Break, enter and steal	2	4	28	80	115	248	212	53	25	4	2	-	-	-	773
Other steal	20	13	72	97	76	124	71	17	10	2	-	1	-	2	505
Driving/traffic	16	5	59	73	22	22	28	5	-	-	-	-	-	-	230
Offences against order	13	14	70	55	29	34	14	4	4	1	-	-	-	-	238
Drug offences	5	6	20	29	30	64	190	102	122	67	14	11	3	1	664
Other offences	13	3	4	3	1	6	19	1	1	-	1	-	-	-	52
TOTAL	93	69	355	475	361	756	1229	576	511	309	134	114	114	42	5138

**Table 4.12 Most serious offence by aggregate sentence imposed -
Sentenced female inmates in full-time custody**

Most serious offence	Aggregate sentence														TOTAL
	< 1 month	1 - < 3 months	3 - < 6 months	6 - < 9 months	9 - < 12 months	1 - < 2 years	2 - < 5 years	5 - < 7 years	7 - < 10 years	10 - < 15 years	15 - < 20 years	20+ years	Life	Forensic Patient	
Murder	-	-	-	-	-	-	-	-	-	2	6	2	1	-	11
Attempt murder	-	-	-	-	-	-	-	1	-	-	-	-	-	-	1
Conspiracy to murder	-	-	-	-	-	-	-	-	-	1	-	-	-	-	1
Manslaughter	-	-	-	-	-	-	3	5	3	3	-	-	-	-	14
Major assault	-	1	1	1	2	4	3	1	1	-	-	-	-	-	14
Other assault	1	1	5	-	2	-	1	-	-	-	-	-	-	-	10
Rape	-	-	-	-	-	-	-	-	-	-	-	-	-	-	-
Serious sexual assault	-	-	-	-	-	1	1	-	-	-	-	-	-	-	2
Incest/carnal knowledge	-	-	-	-	-	-	-	-	1	-	-	-	-	-	1
Indecent assault	-	-	-	-	-	1	-	-	1	-	-	-	-	-	2
Buggery/bestiality	-	-	-	-	-	-	-	-	-	-	-	-	-	-	-
Robbery major assault	-	-	2	-	-	1	10	2	4	-	-	-	-	-	19
Other robbery	-	-	-	2	1	1	5	1	1	-	-	-	-	-	11
Fraud	-	1	7	7	7	9	14	2	-	-	-	-	-	-	47
Break, enter and steal	-	1	3	2	1	12	7	-	1	-	-	-	-	-	27
Other steal	3	5	9	13	6	4	6	1	-	-	-	-	-	-	47
Driving/traffic	3	2	1	-	2	2	-	-	-	-	-	-	-	-	10
Offences against order	1	1	3	3	3	2	1	-	-	-	-	-	-	-	14
Drug offences	2	1	-	4	5	7	12	10	2	3	-	-	-	-	46
Other offences	1	1	-	1	-	-	1	1	-	-	-	-	-	-	5
TOTAL	11	14	31	33	29	44	64	24	14	9	6	2	1	-	282

**Table 4.13 Most serious offence by aggregate sentence imposed -
All sentenced inmates in full-time custody**

Most serious offence	Aggregate sentence														TOTAL
	< 1 month	1 - < 3 months	3 - < 6 months	6 - < 9 months	9 - < 12 months	1 - < 2 years	2 - < 5 years	5 - < 7 years	7 - < 10 years	10 - < 15 years	15 - < 20 years	20+ years	Life	Forensic Patient	
Murder	-	-	-	-	1	-	3	3	4	52	72	85	104	12	336
Attempt murder	-	-	-	-	-	-	-	3	3	6	3	1	2	9	27
Conspiracy to murder	-	-	-	-	-	-	2	3	1	2	-	-	-	-	8
Manslaughter	-	-	-	-	-	1	13	20	37	16	5	2	4	1	99
Major assault	3	6	36	54	37	110	108	37	23	23	9	2	2	7	457
Other assault	18	12	48	50	26	28	18	6	9	3	1	3	-	2	224
Rape	-	-	-	-	-	-	-	1	1	3	-	1	-	1	7
Serious sexual assault	-	-	1	-	4	12	127	96	91	51	7	3	-	4	396
Incest/carnal knowledge	-	-	-	-	1	2	33	35	30	9	2	-	-	-	112
Indecent assault	1	-	3	5	2	17	22	6	4	-	-	-	-	1	61
Buggery/bestiality	-	-	-	-	-	-	2	1	4	2	-	-	-	1	10
Robbery major assault	-	2	3	8	6	35	195	126	122	66	21	6	-	-	590
Other robbery	-	2	4	9	4	31	132	49	23	7	3	1	-	-	265
Fraud	3	5	22	22	19	39	77	20	8	1	-	-	-	1	217
Break, enter and steal	2	5	31	82	116	260	219	53	26	4	2	-	-	-	800
Other steal	23	18	81	110	82	128	77	18	10	2	-	1	-	2	552
Driving/traffic	19	7	60	73	24	24	28	5	-	-	-	-	-	-	240
Offences against order	14	15	73	58	32	36	15	4	4	1	-	-	-	-	252
Drug offences	7	7	20	33	35	71	202	112	124	70	14	11	3	1	710
Other offences	14	4	4	4	1	6	20	2	1	-	1	-	-	-	57
TOTAL	104	83	386	508	390	800	1293	600	525	318	140	116	115	42	5420

**Table 4.21 Most serious offence by aggregate sentence imposed -
Sentenced male inmates in full-time custody (percentage)**

Most serious offence	Aggregate sentence (percentage)														TOTAL
	< 1 month	1 - < 3 months	3 - < 6 months	6 - < 9 months	9 - < 12 months	1 - < 2 years	2 - < 5 years	5 - < 7 years	7 - < 10 years	10 - < 15 years	15 - < 20 years	20+ years	Life	Forensic Patient	
Murder	-	-	-	-	0.3	-	0.2	0.5	0.8	16.2	49.3	72.8	90.4	28.6	6.3
Attempt murder	-	-	-	-	-	-	-	0.3	0.6	1.9	2.2	0.9	1.8	21.4	0.5
Conspiracy to murder	-	-	-	-	-	-	0.2	0.5	0.2	0.3	-	-	-	-	0.1
Manslaughter	-	-	-	-	-	0.1	0.8	2.6	6.7	4.2	3.7	1.8	3.5	2.4	1.7
Major assault	3.2	7.2	9.9	11.2	9.7	14.0	8.5	6.3	4.3	7.4	6.7	1.8	1.8	16.7	8.6
Other assault	18.3	15.9	12.1	10.5	6.6	3.7	1.4	1.0	1.8	1.0	0.7	2.6	-	4.8	4.2
Rape	-	-	-	-	-	-	-	0.2	0.2	1.0	-	0.9	-	2.4	0.1
Serious sexual assault	-	-	0.3	-	1.1	1.5	10.3	16.7	17.8	16.5	5.2	2.6	-	9.5	7.7
Incest/carnal knowledge	-	-	-	-	0.3	0.3	2.7	6.1	5.7	2.9	1.5	-	-	-	2.2
Indecent assault	1.1	-	0.8	1.1	0.6	2.1	1.8	1.0	0.6	-	-	-	-	2.4	1.1
Buggery/bestiality	-	-	-	-	-	-	0.2	0.2	0.8	0.6	-	-	-	2.4	0.2
Robbery major assault	-	2.9	0.3	1.7	1.7	4.5	15.1	21.5	23.1	21.4	15.7	5.3	-	-	11.1
Other robbery	-	2.9	1.1	1.5	0.8	4.0	10.3	8.3	4.3	2.3	2.2	0.9	-	-	4.9
Fraud	3.2	5.8	4.2	3.2	3.3	4.0	5.1	3.1	1.6	0.3	-	-	-	2.4	3.3
Break, enter and steal	2.2	5.8	7.9	16.8	31.9	32.8	17.2	9.2	4.9	1.3	1.5	-	-	-	15.0
Other steal	21.5	18.8	20.3	20.4	21.1	16.4	5.8	3.0	2.0	0.6	-	0.9	-	4.8	9.8
Driving/traffic	17.2	7.2	16.6	15.4	6.1	2.9	2.3	0.9	-	-	-	-	-	-	4.5
Offences against order	14.0	20.3	19.7	11.6	8.0	4.5	1.1	0.7	0.8	0.3	-	-	-	-	4.6
Drug offences	5.4	8.7	5.6	6.1	8.3	8.5	15.5	17.7	23.9	21.7	10.4	9.6	2.6	2.4	12.9
Other offences	14.0	4.3	1.1	0.6	0.3	0.8	1.5	0.2	0.2	-	0.7	-	-	-	1.0
TOTAL	100	100	100	100	100	100	100	100	100	100	100	100	100	100	100

Table 4.22 Most serious offence by aggregate sentence imposed -
Sentenced female inmates in full-time custody (percentage)

Most serious offence	Aggregate sentence (percentage)														TOTAL
	<1 month	1-<3 months	3-<6 months	6-<9 months	9-<12 months	1-<2 years	2-<5 years	5-<7 years	7-<10 years	10-<15 years	15-<20 years	20+ years	Life	Forensic Patient	
Murder	-	-	-	-	-	-	-	-	-	22.2	100.0	100.0	100.0	-	3.9
Attempt murder	-	-	-	-	-	-	-	4.2	-	-	-	-	-	-	0.4
Conspiracy to murder	-	-	-	-	-	-	-	-	-	11.1	-	-	-	-	0.4
Manslaughter	-	-	-	-	-	-	4.7	20.8	21.4	33.3	-	-	-	-	5.0
Major assault	-	7.1	3.2	3.0	6.9	9.1	4.7	4.2	7.1	-	-	-	-	-	5.0
Other assault	9.1	7.1	16.1	-	6.9	-	1.6	-	-	-	-	-	-	-	3.5
Rape	-	-	-	-	-	-	-	-	-	-	-	-	-	-	-
Serious sexual assault	-	-	-	-	-	2.3	1.6	-	-	-	-	-	-	-	0.7
Incest/carnal knowledge	-	-	-	-	-	-	-	-	7.1	-	-	-	-	-	0.4
Indecent assault	-	-	-	-	-	2.3	-	-	7.1	-	-	-	-	-	0.7
Buggery/bestiality	-	-	-	-	-	-	-	-	-	-	-	-	-	-	-
Robbery major assault	-	-	6.5	-	-	2.3	15.6	8.3	28.6	-	-	-	-	-	6.7
Other robbery	-	-	-	6.1	3.4	2.3	7.8	4.2	7.1	-	-	-	-	-	3.9
Fraud	-	7.1	22.6	21.2	24.1	20.5	21.9	8.3	-	-	-	-	-	-	16.7
Break, enter and steal	-	7.1	9.7	6.1	3.4	27.3	10.9	-	7.1	-	-	-	-	-	9.6
Other steal	27.3	35.7	29.0	39.4	20.7	9.1	9.4	4.2	-	-	-	-	-	-	16.7
Driving/traffic	27.3	14.3	3.2	-	6.9	4.5	-	-	-	-	-	-	-	-	3.5
Offences against order	9.1	7.1	9.7	9.1	10.3	4.5	1.6	-	-	-	-	-	-	-	5.0
Drug offences	18.2	7.1	-	12.1	17.2	15.9	18.8	41.7	14.3	33.3	-	-	-	-	16.3
Other offences	9.1	7.1	-	3.0	-	-	1.6	4.2	-	-	-	-	-	-	1.8
TOTAL	100	100	100	100	100	100	100	100	100	100	100	100	100	-	100

**Table 4.23 Most serious offence by aggregate sentence imposed -
All sentenced inmates in full-time custody (percentage)**

Most serious offence	Aggregate sentence (percentage)														TOTAL
	<1 month	1 - <3 months	3 - <6 months	6 - <9 months	9 - <12 months	1 - <2 years	2 - <5 years	5 - <7 years	7 - <10 years	10 - <15 years	15 - <20 years	20+ years	Life	Forensic Patient	
Murder	-	-	-	-	0.3	-	0.2	0.5	0.8	16.4	51.4	73.3	90.4	28.6	6.2
Attempt murder	-	-	-	-	-	-	-	0.5	0.6	1.9	2.1	0.9	1.7	21.4	0.5
Conspiracy to murder	-	-	-	-	-	-	0.2	0.5	0.2	0.6	-	-	-	-	0.1
Manslaughter	-	-	-	-	-	0.1	1.0	3.3	7.0	5.0	3.6	1.7	3.5	2.4	1.8
Major assault	2.9	7.2	9.3	10.6	9.5	13.8	8.4	6.2	4.4	7.2	6.4	1.7	1.7	16.7	8.4
Other assault	17.3	14.5	12.4	9.8	6.7	3.7	1.4	1.0	1.7	0.9	0.7	2.6	-	4.8	4.2
Rape	-	-	-	-	-	-	-	0.2	0.2	0.9	-	0.9	-	2.4	0.1
Serious sexual assault	-	-	0.3	-	1.0	1.5	9.8	16.0	17.3	16.0	5.0	2.6	-	9.5	7.3
Incest/carnal knowledge	-	-	-	-	0.3	0.3	2.6	5.8	5.7	2.8	1.4	-	-	-	2.1
Indecent assault	1.0	-	0.8	1.0	0.5	2.1	1.7	1.0	0.8	-	-	-	-	2.4	1.1
Buggery/bestiality	-	-	-	-	-	-	0.2	0.2	0.8	0.6	-	-	-	2.4	0.2
Robbery major assault	-	2.4	0.8	1.6	1.5	4.4	15.1	21.0	23.2	20.8	15.0	5.2	-	-	10.9
Other robbery	-	2.4	1.0	1.8	1.0	3.9	10.2	8.2	4.4	2.2	2.1	0.9	-	-	4.9
Fraud	2.9	6.0	5.7	4.3	4.9	4.9	6.0	3.3	1.5	0.3	-	-	-	2.4	4.0
Break, enter and steal	1.9	6.0	8.0	16.1	29.7	32.5	16.9	8.8	5.0	1.3	1.4	-	-	-	14.8
Other steal	21.1	21.7	21.0	21.7	21.0	16.0	6.0	3.0	1.9	0.6	-	0.9	-	4.8	10.2
Driving/traffic	18.3	8.4	15.5	14.4	6.2	3.0	2.2	0.8	-	-	-	-	-	-	4.4
Offences against order	13.5	18.1	18.9	11.4	8.2	4.5	1.2	0.7	0.8	0.3	-	-	-	-	4.6
Drug offences	6.7	8.4	5.2	6.5	9.0	8.9	15.6	18.7	23.6	22.0	10.0	9.5	2.6	2.4	13.1
Other offences	13.5	4.8	1.0	0.8	0.3	0.8	1.5	0.3	0.2	-	0.7	-	-	-	1.1
TOTAL	100	100	100	100	100	100	100	100	100	100	100	100	100	100	100

**Table 4.3 Most serious offence by aggregate sentence imposed -
Sentenced male inmates in periodic detention**

Most serious offence	Aggregate sentence (weeks)												TOTAL			
	1 - 20		21 - 40		41 - 60		61 - 80		81 - 100		101 - 120				120 +	
	No.	%	No.	%	No.	%	No.	%	No.	%	No.	%	No.	%	No.	%
Murder	-	-	-	-	-	-	-	-	-	-	-	-	-	-	-	-
Attempt murder	-	-	-	-	-	-	-	-	-	-	-	-	-	-	-	-
Conspiracy to murder	-	-	-	-	-	-	-	-	-	-	-	-	-	-	-	-
Manslaughter	-	-	-	-	-	-	-	-	-	-	1	1.0	-	-	1	0.1
Major assault	13	5.2	53	9.0	28	13.5	18	12.5	-	-	9	8.7	11	8.8	132	9.3
Other assault	31	12.5	42	7.2	7	3.4	3	2.1	-	-	3	2.9	2	1.6	88	6.2
Rape	-	-	-	-	-	-	-	-	-	-	-	-	-	-	-	-
Serious sexual assault	1	0.4	4	0.7	5	2.4	5	3.5	-	-	4	3.8	6	4.8	25	1.8
Incest/carnal knowledge	-	-	-	-	3	1.4	1	0.7	-	-	-	-	1	0.8	5	0.4
Indecent assault	1	0.4	8	1.4	13	6.3	5	3.5	-	-	8	7.7	8	6.4	43	3.0
Buggery/bestiality	-	-	-	-	-	-	-	-	-	-	-	-	-	-	-	-
Robbery major assault	-	-	2	0.3	6	2.9	5	3.5	1	33.3	6	5.8	13	10.4	33	2.3
Other robbery	-	-	2	0.3	2	1.0	9	6.3	-	-	9	8.7	4	3.2	26	1.8
Fraud	12	4.8	39	6.6	23	11.1	21	14.6	-	-	23	22.1	16	12.8	134	9.4
Break, enter and steal	19	7.6	47	8.0	25	12.1	11	7.6	-	-	1	1.0	3	2.4	106	7.5
Other steal	31	12.5	90	15.3	27	13.0	14	9.7	1	33.3	10	9.6	2	1.6	175	12.3
Driving/traffic	71	28.5	188	32.0	27	13.0	11	7.6	-	-	2	1.9	5	4.0	304	21.4
Offences against order	48	19.3	57	9.7	11	5.3	3	2.1	-	-	1	1.0	3	2.4	123	8.7
Drug offences	15	6.0	51	8.7	28	13.5	36	25.0	1	33.3	27	26.0	48	38.4	206	14.5
Other offences	7	2.8	4	0.7	2	1.0	2	1.4	-	-	-	-	3	2.4	18	1.3
TOTAL	249	100	587	100	207	100	144	100	3	100	104	100	125	100	1419	100

**Table 4.4 Most serious offence by aggregate sentence imposed -
Sentenced female inmates in periodic detention**

Most serious offence	Aggregate sentence (weeks)										TOTAL					
	1 - 20		21 - 40		41 - 60		61 - 80		81 - 100		101 - 120		120		No.	%
	No.	%	No.	%	No.	%	No.	%	No.	%	No.	%	No.	%		
Murder	-	-	-	-	-	-	-	-	-	-	-	-	-	-	-	-
Attempt murder	-	-	-	-	-	-	-	-	-	-	-	-	-	-	-	-
Conspiracy to murder	-	-	-	-	-	-	-	-	-	-	-	-	-	-	-	-
Manslaughter	-	-	-	-	-	-	-	-	-	-	-	-	1	7.1	1	0.8
Major assault	-	-	1	2.4	1	5.0	1	4.5	-	-	-	-	-	-	3	2.4
Other assault	-	-	2	4.8	-	-	-	-	-	-	-	-	-	-	2	1.6
Rape	-	-	-	-	-	-	-	-	-	-	-	-	-	-	-	-
Serious sexual assault	-	-	-	-	-	-	-	-	-	-	-	-	-	-	-	-
Incest/carnal knowledge	-	-	-	-	-	-	-	-	-	-	-	-	-	-	-	-
Indecent assault	-	-	-	-	-	-	-	-	-	-	-	-	-	-	-	-
Buggery/bestiality	-	-	-	-	-	-	-	-	-	-	-	-	-	-	-	-
Robbery major assault	-	-	-	-	1	5.0	-	-	-	-	-	-	-	-	1	0.8
Other robbery	-	-	2	4.8	2	10.0	1	4.5	-	-	-	-	1	7.1	6	4.7
Fraud	2	9.5	8	19.0	9	45.0	15	68.2	-	-	3	37.5	5	35.7	42	33.1
Break, enter and steal	2	9.5	5	11.9	1	5.0	1	4.5	-	-	1	12.5	1	7.1	11	8.7
Other steal	8	38.1	8	19.0	1	5.0	-	-	-	-	-	-	-	-	17	13.4
Driving/traffic	1	4.8	4	9.5	1	5.0	2	9.1	-	-	2	25.0	-	-	10	7.9
Offences against order	6	28.6	3	7.1	-	-	1	4.5	-	-	-	-	-	-	10	7.9
Drug offences	1	4.8	9	21.4	4	20.0	1	4.5	-	-	2	25.0	6	42.9	23	18.1
Other offences	1	4.8	-	-	-	-	-	-	-	-	-	-	-	-	1	0.8
TOTAL	21	100	42	100	20	100	22	100	-	-	8	100	14	100	127	100

**Table 4.5 Most serious offence by aggregate sentence imposed -
All sentenced inmates in periodic detention**

Most serious offence	Aggregate sentence (weeks)												TOTAL			
	1 - 20		21 - 40		41 - 60		61 - 80		81 - 100		101 - 120		120 +		No.	%
	No.	%	No.	%	No.	%	No.	%	No.	%	No.	%	No.	%		
Murder	-	-	-	-	-	-	-	-	-	-	-	-	-	-	-	-
Attempt murder	-	-	-	-	-	-	-	-	-	-	-	-	-	-	-	-
Conspiracy to murder	-	-	-	-	-	-	-	-	-	-	-	-	-	-	-	-
Manslaughter	-	-	-	-	-	-	-	-	-	-	1	0.9	1	0.7	2	0.1
Major assault	13	4.8	54	8.6	29	12.8	19	11.4	-	-	9	8.0	11	7.9	135	8.7
Other assault	31	12.5	44	7.0	7	3.1	3	1.8	-	-	3	2.7	2	1.4	90	5.8
Rape	-	-	-	-	-	-	-	-	-	-	-	-	-	-	-	-
Serious sexual assault	1	0.4	4	0.6	5	2.2	5	3.0	-	-	4	3.6	6	4.3	25	1.6
Incest/carnal knowledge	-	-	-	-	3	1.3	1	0.6	-	-	-	-	1	0.7	5	0.3
Indecent assault	1	0.4	8	1.3	13	5.7	5	3.0	-	-	8	7.1	8	5.8	43	2.8
Buggery/bestiality	-	-	-	-	-	-	-	-	-	-	-	-	-	-	-	-
Robbery major assault	-	-	2	0.3	7	3.1	5	3.0	1	33.3	6	5.4	13	9.4	34	2.2
Other robbery	-	-	4	0.6	4	1.8	10	6.0	-	-	9	8.0	5	3.6	32	2.1
Fraud	14	5.2	47	7.5	32	14.1	36	21.7	-	-	26	23.2	21	15.1	176	11.4
Break, enter and steal	21	7.8	52	8.3	26	11.5	12	7.2	-	-	2	1.8	4	2.9	117	7.6
Other steal	39	14.4	98	15.6	28	12.3	14	8.4	1	33.3	10	8.9	2	1.4	192	12.4
Driving/traffic	72	26.7	192	30.5	28	12.3	13	7.8	-	-	4	3.6	5	3.6	314	20.3
Offences against order	54	20.0	60	9.5	11	4.8	4	2.4	-	-	1	0.9	3	2.2	133	8.6
Drug offences	16	5.9	60	9.5	32	14.1	37	22.3	1	33.3	29	25.9	54	38.8	229	14.8
Other offences	8	3.0	4	0.6	2	0.9	2	1.2	-	-	-	-	3	2.2	19	1.2
TOTAL	270	100	629	100	227	100	166	100	3	100	112	100	139	100	1546	100

Table 4.61 Most serious offence by time in custody -
Unsentenced male inmates in full-time custody

Most serious offence	Time in custody												TOTAL			
	< 1 month		1 - < 3 months		3 - < 6 months		6 - < 9 months		9 - < 12 months		1 - < 2 years				2 - < 5 years	
	No.	%	No.	%	No.	%	No.	%	No.	%	No.	%	No.	%	No.	%
Murder	4	1.2	13	5.3	12	7.6	5	7.0	6	14.3	11	17.7	6	40.0	57	6.2
Attempt murder	11	3.4	3	1.2	7	4.4	3	4.2	1	2.4	4	6.5	1	6.7	30	3.3
Conspiracy to murder	-	-	1	0.4	1	0.6	1	1.4	-	-	-	-	-	-	3	0.3
Manslaughter	-	-	-	-	-	-	1	1.4	-	-	2	3.2	-	-	3	0.3
Major assault	39	12.0	29	11.8	19	12.0	10	14.1	1	2.4	2	3.2	1	6.7	101	11.0
Other assault	38	11.7	19	7.8	11	7.0	8	11.3	6	14.3	1	1.6	2	13.3	85	9.2
Rape	1	0.3	-	-	-	-	-	-	-	-	-	-	-	-	1	0.1
Serious sexual assault	5	1.5	14	5.7	10	6.3	3	4.2	-	-	1	1.6	-	-	33	3.6
Incest/carnal knowledge	1	0.3	-	-	2	1.3	2	2.8	-	-	-	-	-	-	5	0.5
Indecent assault	2	0.6	5	2.0	2	1.3	1	1.4	-	-	-	-	-	-	10	1.1
Buggery/bestiality	-	-	-	-	-	-	-	-	-	-	-	-	-	-	-	-
Robbery major assault	29	8.9	28	11.4	14	8.9	2	2.8	5	11.9	8	12.9	-	-	86	9.4
Other robbery	20	6.1	14	5.7	6	3.8	6	8.5	1	2.4	1	1.6	-	-	48	5.2
Fraud	11	3.4	4	1.6	4	2.5	1	1.4	3	7.1	3	4.8	1	6.7	27	2.9
Break, enter and steal	43	13.2	23	9.4	12	7.6	2	2.8	3	7.1	1	1.6	-	-	84	9.1
Other steal	51	15.6	31	12.7	11	7.0	7	9.9	4	9.5	6	9.7	-	-	110	12.0
Driving/traffic	3	0.9	2	0.8	-	-	-	-	-	-	-	-	-	-	5	0.5
Offences against order	20	6.1	8	3.3	7	4.4	3	4.2	-	-	5	8.1	-	-	43	4.7
Drug offences	33	10.1	26	10.6	31	19.6	14	19.7	10	23.8	13	21.0	4	26.7	131	14.3
Other offences	15	4.6	25	10.2	9	5.7	2	2.8	2	4.8	4	6.5	-	-	57	6.2
TOTAL	326	100	245	100	158	100	71	100	42	100	62	100	15	100	919	100

Note: These statistics may include inmates who completed serving a sentence(s) for other offence(s) during the current imprisonment episode but remained in custody as unsentenced inmates pending the outcome of other charges. The time spent in custody therefore includes any time served under sentence in the current episode.

**Table 4.62 Most serious offence by time in custody -
Unsentenced female inmates in full-time custody**

Most serious offence	Time in custody												TOTAL			
	< 1 month		1 - < 3 months		3 - < 6 months		6 - < 9 months		9 - < 12 months		1 - < 2 years				2 - < 5 years	
	No.	%	No.	%	No.	%	No.	%	No.	%	No.	%	No.	%	No.	%
Murder	1	3.7	-	-	-	-	-	-	1	100.0	2	33.3	2	100%	6	8.3
Attempt murder	1	3.7	-	-	-	-	1	25.0	-	-	1	16.7	-	-	3	4.2
Conspiracy to murder	-	-	-	-	-	-	-	-	-	-	-	-	-	-	-	-
Manslaughter	-	-	-	-	-	-	-	-	-	-	-	-	-	-	-	-
Major assault	1	3.7	-	-	1	7.1	1	25.0	-	-	-	-	-	-	3	4.2
Other assault	4	14.8	2	11.1	2	14.3	-	-	-	-	-	-	-	-	8	11.1
Rape	-	-	-	-	-	-	-	-	-	-	-	-	-	-	-	-
Serious sexual assault	-	-	-	-	-	-	-	-	-	-	-	-	-	-	-	-
Incest/carnal knowledge	-	-	-	-	-	-	-	-	-	-	-	-	-	-	-	-
Indecent assault	-	-	-	-	-	-	-	-	-	-	-	-	-	-	-	-
Buggery/bestiality	-	-	-	-	-	-	-	-	-	-	-	-	-	-	-	-
Robbery major assault	-	-	2	11.1	3	21.4	-	-	-	-	-	-	-	-	5	6.9
Other robbery	2	7.4	-	-	1	7.1	-	-	-	-	-	-	-	-	3	4.2
Fraud	3	11.1	2	11.1	1	7.1	-	-	-	-	1	16.7	-	-	7	9.7
Break, enter and steal	4	14.8	1	5.6	2	14.3	1	25.0	-	-	-	-	-	-	8	11.1
Other steal	4	14.8	3	16.7	1	7.1	1	25.0	-	-	-	-	-	-	9	12.5
Driving/traffic	-	-	-	-	1	-	-	-	-	-	-	-	-	-	1	1.4
Offences against order	4	14.8	2	11.1	-	-	-	-	-	-	-	-	-	-	6	8.3
Drug offences	1	3.7	4	22.2	2	14.3	-	-	-	-	-	-	-	-	7	9.7
Other offences	2	7.4	2	11.1	-	-	-	-	-	-	2	33.3	-	-	6	8.3
TOTAL	27	100	18	100	14	100	4	100	1	100	6	100	2	100	72	100

Note: These statistics may include inmates who completed serving a sentence(s) for other offence(s) during the current imprisonment episode but remained in custody as unsentenced inmates pending the outcome of other charges. The time spent in custody therefore includes any time served under sentence in the current episode.

**Table 4.63 Most serious offence by time in custody -
All unsentenced inmates in full-time custody**

Most serious offence	Time in custody										TOTAL					
	< 1 month		1 - < 3 months		3 - < 6 months		6 - < 9 months		9 - < 12 months				1 - < 2 years		2 - < 5 years	
	No.	%	No.	%	No.	%	No.	%	No.	%	No.	%	No.	%	No.	%
Murder	5	1.4	13	4.9	12	7.0	5	6.7	7	16.3	13	19.1	8	47.1	63	6.4
Attempt murder	12	3.4	3	1.1	7	4.1	4	5.3	1	2.3	5	7.4	1	5.9	33	3.3
Conspiracy to murder	-	-	1	0.4	1	0.6	1	1.3	-	-	-	-	-	-	3	0.3
Manslaughter	-	-	-	-	-	-	1	1.3	-	-	2	2.9	-	-	3	0.3
Major assault	40	11.3	29	11.0	20	11.6	11	14.7	1	2.3	2	2.9	1	5.9	104	10.5
Other assault	42	11.9	21	8.0	13	7.6	8	10.7	6	14.0	1	1.5	2	11.8	93	9.4
Rape	1	0.3	-	-	-	-	-	-	-	-	-	-	-	-	1	0.1
Serious sexual assault	5	1.4	14	5.3	10	5.8	3	4.0	-	-	1	1.5	-	-	33	3.3
Incest/carnal knowledge	1	0.3	-	-	2	1.2	2	2.7	-	-	-	-	-	-	5	0.5
Indecent assault	2	0.6	5	1.9	2	1.2	1	1.3	-	-	-	-	-	-	10	1.0
Buggery/bestiality	-	-	-	-	-	-	-	-	-	-	-	-	-	-	-	-
Robbery major assault	29	8.2	30	11.4	17	9.9	2	2.7	5	11.6	8	11.8	-	-	91	9.2
Other robbery	22	6.2	14	5.3	7	4.1	6	8.0	1	2.3	1	1.5	-	-	51	5.1
Fraud	14	4.0	6	2.3	5	2.9	1	1.3	3	7.0	4	5.9	1	5.9	34	3.4
Break, enter and steal	47	13.3	24	9.1	14	8.1	3	4.0	3	7.0	1	1.5	-	-	92	9.3
Other steal	55	15.5	34	12.9	12	7.0	8	10.7	4	9.3	6	8.8	-	-	119	12.0
Driving/traffic	3	0.8	2	0.8	1	0.6	-	-	-	-	-	-	-	-	6	0.6
Offences against order	25	7.1	10	3.8	7	4.1	3	4.0	-	-	5	7.4	-	-	50	5.0
Drug offences	34	9.6	30	11.4	33	19.2	14	18.7	10	23.3	13	19.1	4	23.5	138	13.9
Other offences	17	4.8	27	10.3	9	5.2	2	2.7	2	4.7	6	8.8	-	-	63	6.4
TOTAL	354	100	263	100	172	100	75	100	43	100	68	100	17	100	992	100

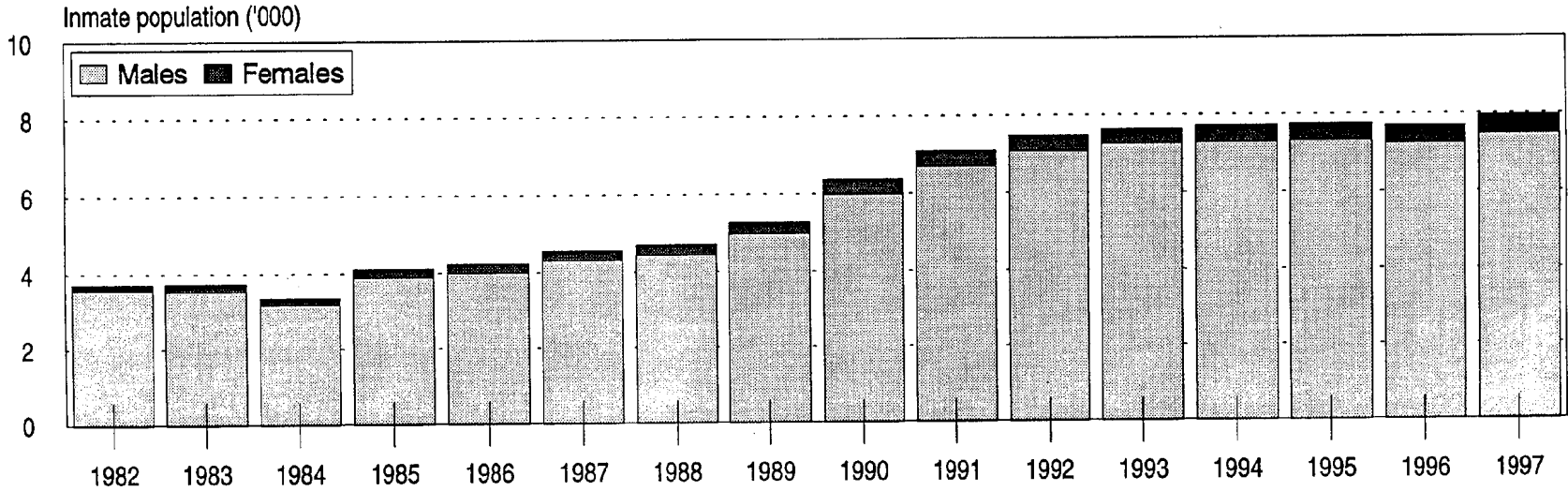
Note: These statistics may include inmates who completed serving a sentence(s) for other offence(s) during the current imprisonment episode but remained in custody as unsentenced inmates pending the outcome of other charges. The time spent in custody therefore includes any time served under sentence in the current episode.

POPULATION

TRENDS

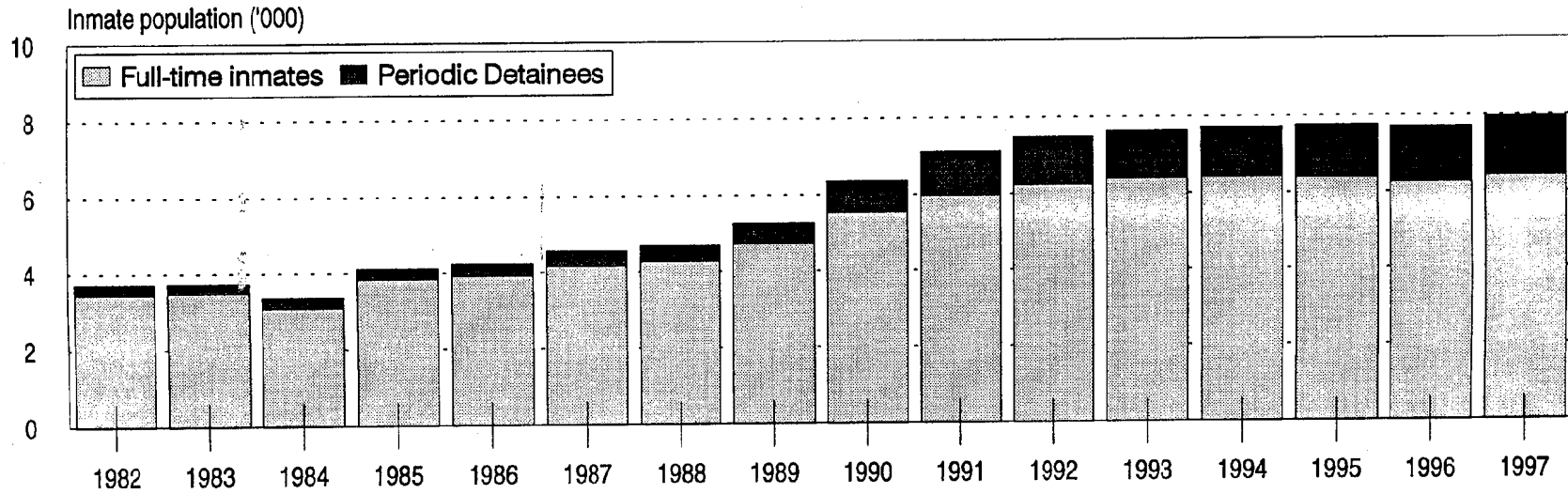
Blank Page

Figure 1: Trends in the gender of the inmate population (includes Periodic Detainees) as at the 30th June each year



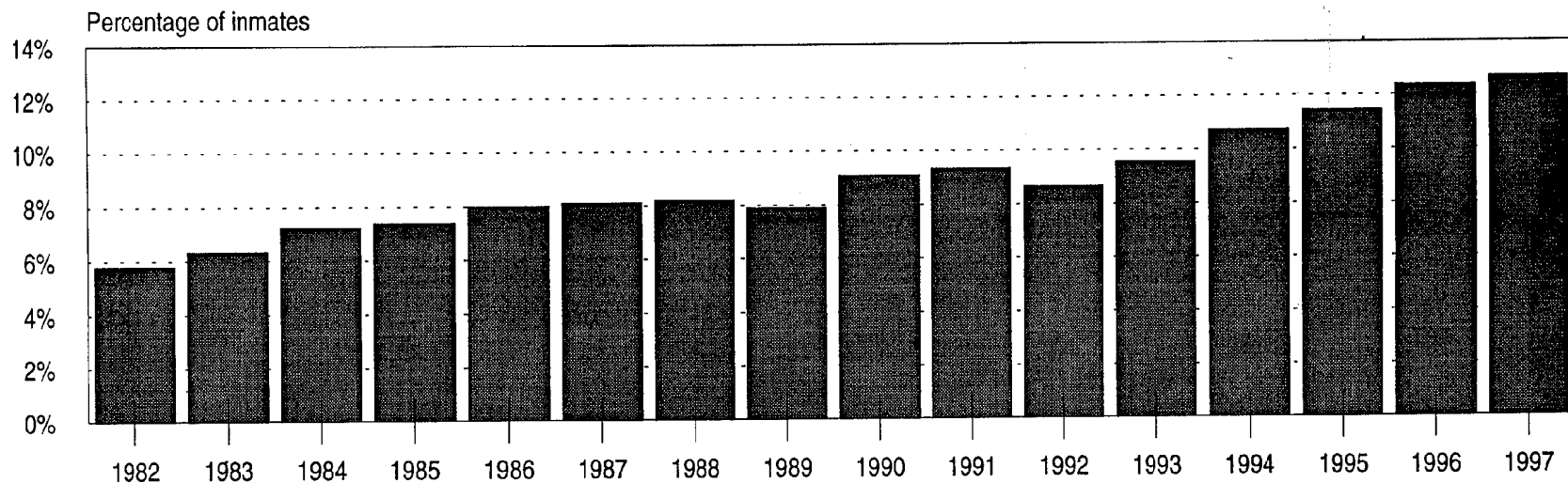
NSW INMATE CENSUS 1997

Figure 2: Trends in the inmate custodial program (includes Periodic Detainees) as at the 30th June each year



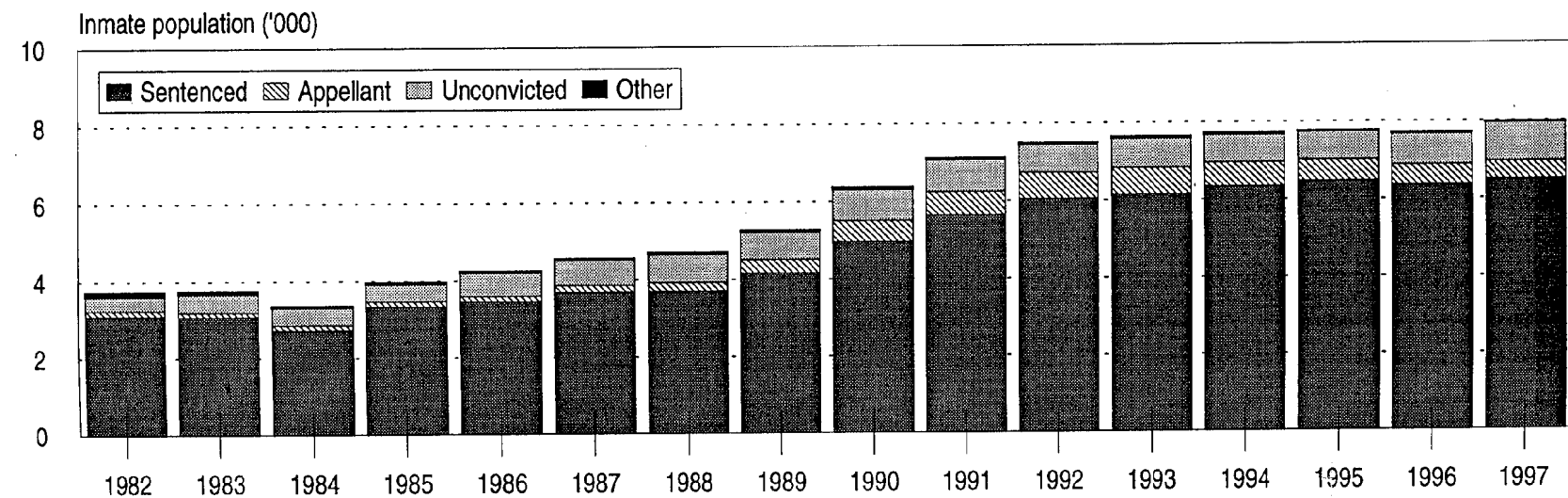
POPULATION TRENDS

Figure 3: Trends in the Aboriginal/Torres Strait Islander status of inmates (includes Periodic Detainees) as at the 30th June each year



NSW INMATE CENSUS 1997

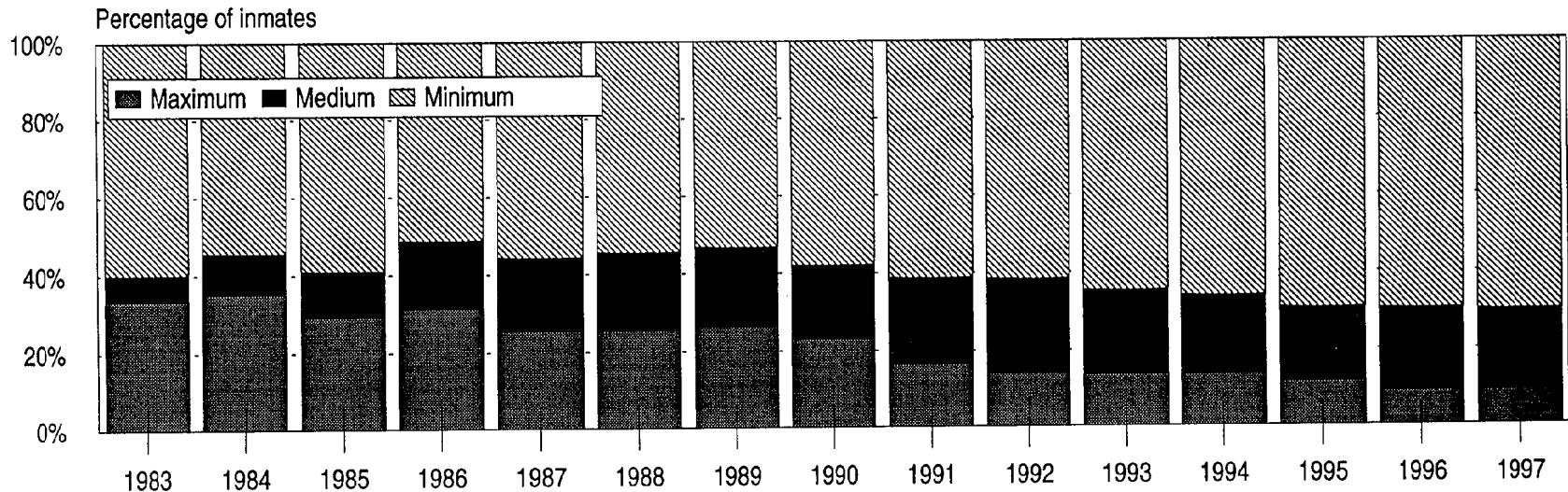
Figure 4: Trends in the legal status of inmates (includes Periodic Detainees) as at the 30th June each year



POPULATION TRENDS

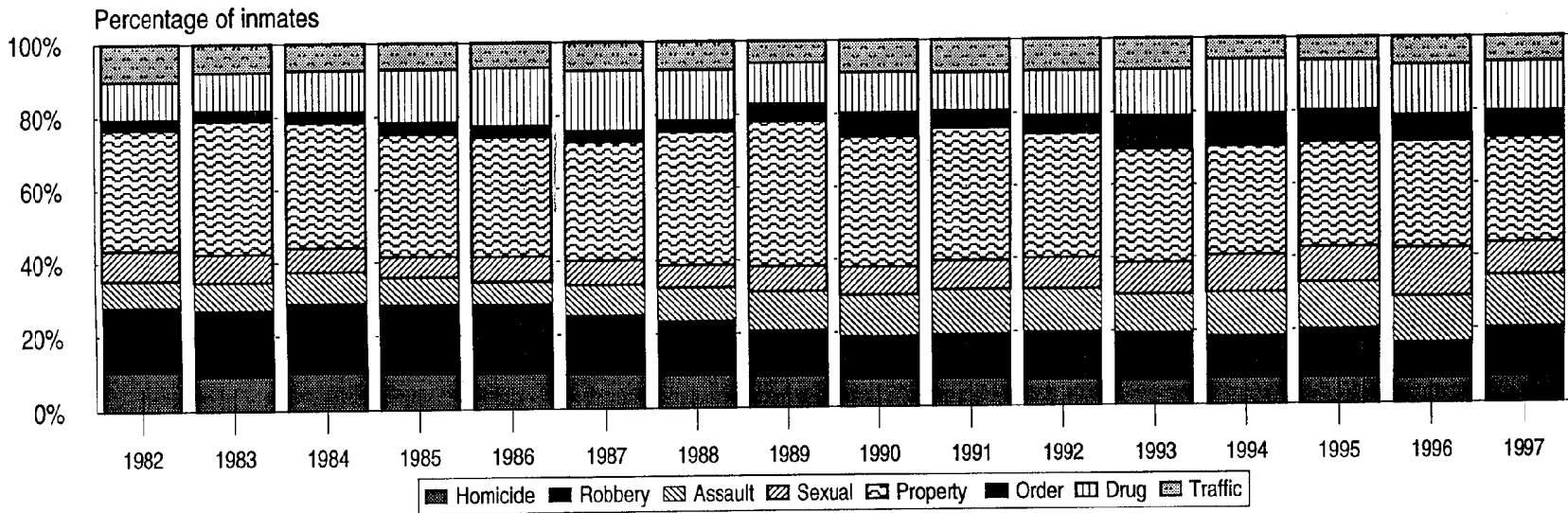
Note: Sentenced inmates includes Forensic Patients. Other inmates includes those awaiting sentencing, deportees and civil inmates.

Figure 5: Trends in the security classification of convicted inmates (excludes Periodic Detainees) as at the 30th June each year



Note: Maximum includes inmates classified as A1, A2, E1. Medium includes inmate classified as B and E2 (in 1997 includes Category 2 inmates)
 Minimum includes inmates classified as C1, C2, C3 (in 1997 includes Category 3 inmates)

Figure 6: Trends in Most Serious Offence (includes Periodic Detainees) as at the 30th June each year



**Table 5.1 Trends in the Aboriginal & Torres Strait Islander inmate population as at 30th June;
1982 to 1997 - All inmates**

Year	Male		Females		All inmates	
	Number	%	Number	%	Number	%
1982	210	97.2%	6	2.8%	216	100.0
1983	226	95.8%	10	4.2%	236	100.0
1984	234	96.7%	8	3.3%	242	100.0
1985	294	96.7%	10	3.3%	304	100.0
1986	325	96.2%	13	3.8%	338	100.0
1987	350	94.9%	19	5.1%	369	100.0
1988	358	93.0%	27	7.0%	385	100.0
1989	382	92.0%	33	8.0%	415	100.0
1990	543	93.8%	36	6.2%	579	100.0
1991	613	92.3%	51	7.7%	664	100.0
1992	599	92.4%	49	7.6%	648	100.0
1993	685	94.0%	44	6.0%	729	100.0
1994	764	92.4%	63	7.6%	827	100.0
1995	831	93.6%	57	6.4%	888	100.0
1996	878	92.2%	74	7.8%	952	100.0
1997	934	92.5%	76	7.5%	1010	100.0

Note: Does not include inmates with an "unknown" Aboriginality status

Table 5.2 Trends in the Aboriginality status of inmates; 1982 to 1997
All inmates

Year	Non-Aboriginal		Aboriginal/TSI		Unknown		All inmates	
	Number	%	Number	%	Number	%	Number	%
1982	3476	93.5%	216	5.8%	27	0.7%	3719	100.0
1983	3394	90.9%	236	6.3%	103	2.8%	3733	100.0
1984	3047	90.8%	242	7.2%	65	1.9%	3354	100.0
1985	3726	90.5%	304	7.4%	85	2.1%	4115	100.0
1986	3763	89.0%	338	8.0%	129	3.1%	4230	100.0
1987	4105	90.2%	369	8.1%	77	1.7%	4551	100.0
1988	4097	87.3%	385	8.2%	209	4.5%	4691	100.0
1989	4839	92.0%	415	7.9%	7	0.1%	5261	100.0
1990	5510	86.5%	579	9.1%	278	4.4%	6367	100.0
1991	6069	85.4%	664	9.3%	370	5.2%	7103	100.0
1992	6740	90.0%	648	8.7%	97	1.3%	7485	100.0
1993	6809	89.2%	729	9.6%	94	1.2%	7632	100.0
1994	6828	88.5%	827	10.7%	56	0.7%	7711	100.0
1995	6754	87.2%	888	11.5%	107	1.4%	7749	100.0
1996	6598	85.8%	952	12.4%	141	1.8%	7691	100.0
1997	6817	85.7%	1010	12.7%	130	1.6%	7957	100.0

Blank Page

APPENDIX

Blank Page

APPENDIX 1

New South Wales Classification of Offences and of Care and Protection of Children (Second Revision)

Code	Offence
1.	Homicides, Assaults and Like Offences
100	Murder, Accessory before the fact to murder
101	Attempted murder
110	Conspire to commit murder
120	Manslaughter (other than by driving)
	Assaults, Not elsewhere classified:
130	Major assault - eg. malicious wounding, A.O.A.B.H. - G.B.H.
140	Minor assault - eg. assault police/child/female/common
150	Assault of unspecified nature
	Acts endangering life or likely to cause serious bodily harm, not elsewhere classified:
160	Endangering person on railways
161	Arson of building or vehicle, person therein
169	Other
170	Cruelty to or neglect (including abandonment) of children
180	Abduction and kidnapping
182	Procuring an abortion
199	Other
2.	Sexual and Related Offences
200	Rape - eg. ravish, carnally know
201	Attempted rape - eg. assault with intent to rape
202	Grievous Bodily Harm with intent to have sexual intercourse
203	Grievous Bodily Harm with intent to have sexual intercourse with third person, present or nearby
204	Actual Bodily Harm threaten/intent to have sexual intercourse
205	A-B.H. threaten/intent to have sexual intercourse with third person
206	Sexual intercourse without consent with person 16 years of age or over
207	Sexual intercourse without consent with person under 16 years
210	Incest - e.g. carnal knowledge daughter 16-17, attempt
	Unlawful sexual intercourse with a female not elsewhere classified:
211	Under 10 years of age - eg. carnal knowledge, assault intent carnal knowledge
219	Other carnal knowledge
220	Indecent assault on female
221	Indecent assault on person or act of indecency (Section 61)
230	Buggery and bestiality
240	Indecent assault on or act with male excluding buggery
250	Procuring or soliciting male for commission of unnatural act
	Prostitution and related offences:
260	Soliciting or loitering by prostitute
261	Procuring
269	Other
299	Other- (including Necrophilia)
3.	Robbery and Extortion
	Robbery:
300	With major assault - e.g. Armed Robbery
310	With minor assault - eg. Assault and Rob
319	Unspecified whether major or minor assault - eg. conspiracy to robbery
320	Extortion - eg. demand money or property with menace
321	Blackmail
4.	Fraud
330	Offences against the currency
335	Forgery and uttering, not elsewhere contained
338	Passing valueless cheques
340	Fraud, not elsewhere contained - eg. False pretences, imposition
5.	Offences against property , not elsewhere counted
350	Misappropriation - eg. embezzlement
360	Break, enter and steal

Code Offence

Larceny of vehicles or boats (including illegal use):
370 Larceny of boats
373 Larceny of motor vehicles
373 Larceny of other vehicles
377 Steal from the person
379 Stealing, not elsewhere contained - eg. larceny
380 Unlawful possession of property - eg. goods in custody
385 Receiving

Injury to property (intentional or reckless):
390 Injury to animals
395 Arson (person not therein)
399 Other

6. Driving, Traffic and Related Offences

Driving offences occasioning:
400 Death
405 Injury

Driving offences not elsewhere contained:
410 Driving under the influence of alcohol or drugs
411 Aid and abet driving under influence of alcohol or drugs
412 Refuse breath test for alcohol
415 Dangerous driving
420 Negligent driving
431 Failing to stop after an accident
439 Other

License offences associated with driving:
440 Driving whilst license suspended etc.
441 Driving without a license
445 Fail to carry licence or otherwise part with license
449 Other - including fraudulently applying for or obtaining a licence whilst disqualified
450 Offences relating to road-worthiness of vehicle
460 Offences relating to transport of goods by road
480 Parking offences
490 Offences by pedestrians
499 Other offences

7. Offences against enforcement of Order

500 Accessory after the fact
510 Breach of conditions of release or recognizance
515 Bail offences
520 Contempt of court - e.g. fail to comply with court order / community service order
521 Escape lawful custody - e.g. fail to report to P.D.C.
522 Fail to comply with maintenance order
530 Perjury, bribery and like offences
540 Resisting arrest or incite thereto
550 Treason or sedition
560 Trespassing and like offences
570 Unlawful assembly and related offences
598 Pronounced to be habitual criminal
599 Other

8. Offences against laws relating to 'drug taking' (including Child Welfare Act)

600 Use, etc. or possession
610 Obtaining by forgery or false representation
620 Selling
630 Importing or exporting
635 Making - e.g. cultivate
640 Other

9. Other Offences

649 Offences relating to sale, possession, etc. of poisons and restricted substances, not elsewhere contained

Offensive behaviour and related offences:
650 Drunkenness
651 Language, obscene, threatening or abusive
659 Other
660 Found with intent to commit an offence, not elsewhere contained
661 Consorting
662 Vagrancy
670 Environmental offences

Code Offence

680 Betting and gaming offences
681 Bigamy
682 Evade fare
683 Offences against liquor laws
684 Unlawful importation or exportation of goods, not elsewhere contained:

Unlawful possession of weapons, etc. and related offences

685 Pistols and firearms
687 Other weapons or dangerous articles
689 Other
698 Prohibited migrant
699 Other

10. Order Relating the to Care and Protection of Children

Orders arising from neglect of child:

Destitute or homeless:

700 No fixed place of abode
705 Destitute
710 Exposed to moral danger

Unfit guardianship:

720 Improper
721 Incompetent
739 Orders arising from neglect of child

Orders arising from the conduct of child:

740 Absconding from custody
750 Breach of probation conditions
760 Truancy
770 Uncontrollable
790 Drug involvement - proceeding under Child Welfare Act
799 Other orders arising from the conduct of child

999 Offence not known