



Statistical Publication

NSW Inmate Census 2020

Summary of Characteristics

Helen Tang and Simon Corben

Statistical Publication No. 49

March 2024

ISSN 2653 8164

Corrective Services NSW

Statistical Publication No. 49
ISSN 2653 8164

© Corrective Services NSW

Corrections Research, Evaluation and Statistics
Delivery, Performance and Culture
Corrective Services NSW
Level 4, 180 Thomas Street, Haymarket
SYDNEY NSW 2000

Telephone: (02) 8346 - 1556

E-mail: simon.corben@dcj.nsw.gov.au
research.enquiries@dcj.nsw.gov.au

Web: <http://www.correctiveservices.dcj.nsw.gov.au>

Table of Contents

Explanatory notes	i
1. Full-time custody inmates	
Statistical summary.....	2
Table 1.1 Demographic characteristics.....	3
Table 1.2 Legal status characteristics.....	4
Table 1.3 Characteristics of offences and sentences	5
Table 1.4 Inmate security classification.....	8
Table 1.5 Location and correctional centre security classification	9
Table 1.6 Country of birth	11
Table 1.7 Statistical area of last known address	15
2. Indigenous inmates	
Statistical summary – Indigenous inmates	17
Table 2.1 Demographic characteristics – Indigenous inmates	18
Table 2.2 Legal status characteristics – Indigenous inmates	19
Table 2.3 Characteristics of offences and sentences – Indigenous inmates	20
Table 2.4 Inmate security classification – Indigenous inmates	23
Table 2.5 Location and correctional centre security classification – Indigenous inmates	24
Table 2.6 Country of birth – Indigenous inmates.....	26
Table 2.7 Statistical area of last known address – Indigenous inmates .	27
3. Most serious offence by aggregate sentence length (sentenced inmates) or time in custody (unsentenced inmates)	
Table 3.1.1 Most serious offence by aggregate sentence imposed – Sentenced male inmates in full-time custody	29
Table 3.1.2 Most serious offence by aggregate sentence imposed – Sentenced female inmates in full-time custody.....	30
Table 3.1.3 Most serious offence by aggregate sentence imposed – All sentenced inmates in full-time custody	31
Table 3.2.1 Most serious offence by aggregate sentence imposed – Sentenced male inmates in full-time custody (percentage)	32
Table 3.2.2 Most serious offence by aggregate sentence imposed – Sentenced female inmates in full-time custody (percentage)	33
Table 3.2.3 Most serious offence by aggregate sentence imposed – All sentenced inmates in full-time custody (percentage)	34
Table 3.3.1 Most serious offence by time in custody – Unsentenced male inmates in full-time custody	35
Table 3.3.2 Most serious offence by time in custody –	

	Unsentenced female inmates in full-time custody	36
Table 3.3.3	Most serious offence by time in custody – All unsentenced inmates in full-time custody	37

4. Population trends

Table 4.1	Trends in the total inmate population by place of detention as at 30 June; 1982 to 2019 (includes periodic detainees)	39
Table 4.2	Trends in the gender of the inmate population as at 30 June; 1982 to 2019 (includes periodic detainees).....	40
Figure 1	Trends in the gender of the inmate population (includes periodic detention) as at 30 June each year.....	41
Figure 2	Trends in the inmate custodial programs (includes periodic detention) as at 30 June each year.....	41
Table 4.3	Trends in the Aboriginal/TSI status of inmates as at 30 June; 1982 to 2019 (includes periodic detainees)	42
Table 4.4	Trends in the legal status of inmates as at 30 June; 1982 to 2019 (includes periodic detainees)	43
Figure 3	Trends in the Aboriginal/TSI inmates (includes periodic detention) as at 30 June each year	44
Figure 4	Trends in the legal status of inmates (includes periodic detention) as at 30 June each year	44
Table 4.5	Trends in the Aboriginal/TSI inmate population by gender as at 30 June; 1982 to 2019 (includes periodic detainees)	45
Table 4.6	Trends in the Aboriginal/TSI inmate population by gender and custodial program as at 30 June; 1982 to 2019 (includes periodic detainees)	46
Table 4.7	Trends in the security classification of convicted inmates; 1983 to 2019 (excludes periodic detainees).....	47
Table 4.8	Trends in most serious offence (ANZSOC); 1982 to 2019 (includes periodic detainees)	48
Figure 5	Trends in the security classification of convicted inmates (excludes periodic detention) as at 30 June each year.....	49
Figure 6	Trends in the most serious offence (includes periodic detention) as at 30 June each year.....	49
Table 4.9	Trends in age profile of inmates as at 30 June; 1982 to 2019 (includes periodic detainees)	50
Figure 7	Trends in the age profile of inmates (includes periodic detention) as at 30 June each year	51
Figure 8	Trends in the age profile of Aboriginal/TSI inmates (includes periodic detention) as at 30 June each year.....	51

Appendices

	Appendix 1: Australian and New Zealand Standard Offence Classification (ANZSOC), 2011 (3 rd edition)	53
	Appendix 2: Offence grouping for trends	57

EXPLANATORY NOTES

(a) General information

The New South Wales Inmate Census was conducted as part of the National Australian Prison Census for 30 June 2020. The first Australian National Prison Census was conducted on 30 June 1982 and both the NSW and National inmate censuses have been conducted annually since that time. Previous publications of the NSW Inmate Census can be obtained from the Corrective Services NSW website (<http://www.correctiveservices.justice.nsw.gov.au>). National prison census publications are published by the Australian Bureau of Statistics (ABS) (see *Prisoners in Australia ABS Catalogue 4517.0*).

In previous years Section 1 of this report incorporated statistics on all inmates including periodic detainees and Section 3 provided a detailed profile of the periodic detainee population. Following abolition of periodic detention as a sentencing option in 2010 the periodic detention population has declined significantly. Reforms enabling the re-sentencing of offenders subject to a periodic detention order came into force in September 2018. Following these changes, all periodic detention orders have ceased to apply from this date. The scope of this report ceases to incorporate periodic detainees and the section describing the characteristics of these offenders has been removed.

(b) Scope of data collection

This publication contains summary statistics of inmates managed by Corrective Services NSW (CSNSW) who were held in full-time custody in New South Wales at midnight on 30 June 2020. Inmates temporarily absent from a correctional centre (as at midnight on Census night) under s26 of the *Crimes (Administration of Sentences) Act, 1999* have been excluded with the exception of those inmates housed at Parramatta Transitional Centre and Bolwara House Transitional Centre (Emu Plains). Police custody 'police-bail refused' detainees held in police/court complexes as at midnight on Census night under the management of CSNSW (as provided under Part 13 of the *Crimes (Administration of Sentences) Act 1999*) are also included.

Prior to 2007, the scope of the NSW Inmate Census was strictly based on inmates held in gazetted correctional centres and periodic detention centres as at midnight on 30 June each year. Despite the fact that CSNSW had managed inmates in police/court complexes since 1992 and transitional centres since 1996, these inmates were not considered for inclusion in the scope of the Census data collection because they were not held in gazetted correctional centres. Between 1997 and 2006, this publication series included these statistics as separate totals for inmates held in police/court complexes and transitional centres. Since 2006 these inmates have been incorporated into the section detailing full-time custody inmates.

Offenders residing in non-custodial facilities managed by CSNSW such as Community Offender Support Program Centres (COSP Centres) and community residential facilities (such as the Balund-a facility at Tabulam) are excluded from the scope of the inmate Census as these offenders are not held in custody. These offenders are incorporated within the scope of the NSW Community Offender Census (available at <http://www.correctiveservices.justice.nsw.gov.au>). Persons held at the NSW Department of Health's Forensic Hospital (adjacent to Long Bay Correctional Complex) are also excluded as this facility is not a gazetted correctional centre nor is it managed by CSNSW.

In previous years the scope for this publication and the ABS's National Australian Prison Census were misaligned. As a census of adult prisoners, the National Australian Prison Census excluded all inmates (regardless of their age) who were held at Kariong Juvenile Correctional Centre. CSNSW managed the Kariong Juvenile Correctional Centre between December 2004 and May 2015. Since CSNSW ceased managing Kariong Juvenile Correctional Centre this discrepancy between scope of the ABS and this publication has been removed.

Reforms for the re-sentencing of offenders who were subject to a periodic detention order came into effect on 24 September 2018 under the *Crimes (Sentencing Procedure) Amendment (Sentencing Options) Act 2017 No 53*. From that date all periodic detention orders ceased to apply and as such periodic detention is no longer a component of the scope of this publication.

(c) Concept of an episode of imprisonment

Statistical information describing legal status, type of sentence, court type, sentence terms, most serious offence *etc* all relate to the episode of imprisonment current at the time of the Census. For the purposes of this publication, an episode of imprisonment is taken as a continuous period of imprisonment under the management of CSNSW.

In distinguishing between the current and any previous episode of imprisonment the following rules were applied:

- i. for inmates held in custody for breach of a parole or licence order relating to a previous period(s) of imprisonment, the previous period(s) of imprisonment is/are excluded from the current episode;
- ii. any period of imprisonment prior to a release from a court where the inmate was subsequently freed without having been returned to full-time custody within 1 day, was excluded from the current episode;

- iii. any period of imprisonment prior to a transfer into police custody where the inmate was subsequently freed without having been returned to full-time custody within 5 days, was excluded from the current episode;
- iv. any period of imprisonment prior to release on bail, on a bond or to immigration authorities was excluded from the current episode;
- v. any period of imprisonment prior to transfer to an institution other than a NSW correctional centre (including Kariong Juvenile Correctional Centre), a transitional centre or police/court complex operated by CSNSW was excluded from the current episode. For example, this excludes detention in a psychiatric hospital, juvenile or interstate correctional institution;
- vi. for inmates who had escaped from CSNSW custody and had been subsequently returned to custody, the episode of imprisonment current at the time of the escape was included in the current episode;
- vii. for inmates who have had their periodic detention order cancelled and were now serving the sentence by way of full-time imprisonment, or have been placed into full-time custody in relation to other offences, the period of periodic detention imprisonment was excluded from the current episode.

(d) Aboriginality

An inmate is recorded as an Aboriginal or Torres Strait Islander (TSI) where they have identified as such (by self report) in any current or previous episode of imprisonment. Prior to 2002 the Aboriginal/TSI status of the inmate current at the time of the Census was recorded.

(e) Known prior imprisonment as an adult

For the purposes of this publication known prior imprisonment includes any episode of imprisonment within periodic detention or full-time custody in NSW. Prior imprisonment includes imprisonment under a court issued order within a police/court cell complexes managed by the CSNSW but excludes any period of detention managed by CSNSW as a police-bail refused detainee.

Prior to 1999, prior adult imprisonment was based simply on whether an inmate had any known episode of prior imprisonment as an adult in a gazetted correctional centre in NSW. A hierarchy of sub-categories of known prior imprisonment based on custodial program and legal status was introduced in 1999. In 2009 the hierarchy was revised to identify inmates having prior community based order(s) under CSNSW supervision within the population of inmates with no prior custodial imprisonment. Where there is

more than one period of prior imprisonment of a particular sub-category, the highest sub-category is used. The sub-categories, from lowest to highest, are:

- i. no prior imprisonment or community-based order;
- ii. prior community based order but no prior imprisonment;
- iii. an episode of periodic detention;
- iv. an episode on remand in full-time custody;
- v. an episode in full-time custody for fine default;
- vi. an episode in full-time custody under sentence.

(f) English speaking status of country of birth

Country of birth classification is based on the Standard Australian Classification of Countries (SACC) Second Edition (Australian Bureau of Statistics Catalogue No: 1269.0, ABS 2008). English speaking status of the country of birth is based on the 'Main English speaking countries' as identified in ABS publication *Australian Standard Classification of Countries for Social Statistics (ASCCSS) (ABS Catalogue No. 1269.0)*. The main English speaking countries comprise: Australia, Canada, New Zealand, Republic of Ireland, South Africa, United Kingdom (Channel Islands, England, Scotland, Wales and Northern Ireland) and the United States of America.

(g) Legal status

For the purpose of this publication, inmates have been classified to one of the following seven legal status categories:

- i. under sentence - no appeal;
- ii. awaiting result of appeal against conviction or sentence;
- iii. detained as a forensic/correctional patient;
- iv. unconvicted (awaiting court hearing/trial);
- v. awaiting deportation;
- vi. awaiting extradition to another jurisdiction; or
- vii. civil inmate (held in custody for an offence other than a criminal offence).

The previously reported category 'convicted but awaiting sentence' was removed from this publication in 2007 as this legal status is not able to be determined from available electronic records. Inmates with this status are now included as 'unconvicted' inmates. Inmates held as Police custody 'police-bail refused' detainees are recorded as 'unconvicted' inmates.

(h) Type of sentence

This item relates to the aggregate sentence imposed (see explanatory note (m)).

The category 'Life sentence' is comprised of (a) persons sentenced to an 'existing life sentence' (as defined in Schedule 1 of the *Crimes (Sentencing Procedure) Act 1999*) who have either yet to have that sentence redetermined by the Supreme Court or have been prohibited from making further application; (b) persons sentenced to an 'existing life sentence' who have had that sentence redetermined by the Supreme Court and the court has declined to set a specific term for the sentence but has set a non-parole period of a term of years; (c) persons sentenced to 'natural life' following proclamation of the *Life Sentences Amendment Act, 1989* and (d) persons sentenced to 'Life' with/without a non-parole period under federal/interstate legislation.

The category 'Forensic patient' is comprised of persons identified as 'forensic patients' as defined under Section 42 of the *Mental Health (Forensic Provisions) Act 1990* which includes persons found not guilty by reason of mental illness and persons found unfit to be tried. The category also includes persons convicted or held on remand for a criminal offence who are transferred from a correctional centre to a mental health facility managed by CSNSW as a 'correctional patient' under Section 55 of the *Act*. Prior to 2011 these persons were reported in Tables 1.3 and 2.3 as 'forensic patients – Type B'.

For other sentence types detailed in this publication sentences are described as either 'Sentence/Non-Parole' where a court imposed a non-parole period (i.e that component of the sentence that must be served in custody) or as 'Sentence/Parole period declined' where the court did not impose a non-parole period.

A new fine enforcement system for NSW was introduced from 27 January 1998 under the *Fines Act 1996* and is based on a hierarchy of civil and non-custodial sanctions with imprisonment as a sanction of last resort. Since that time inmates whose sentence type is recorded as 'Fine default' were held only for reason of default on a commonwealth or interstate fine (i.e. there are no outstanding charges or current sentences). The last fine defaulter was received into CSNSW custody in August 2004.

(i) Level and State of court

This item represents the level and state of court at which (for sentenced inmates) the current sentence for the most serious offence was imposed. For unsentenced inmates, the court at which the order for detention for the most serious offence (see explanatory note (k) below) current at the time of the Census is used. Appeal courts were recorded only where such courts have altered the sentence term imposed for the most serious offence. Where the most serious offence was breach of parole, the court of conviction is shown as State Parole Authority (formerly the NSW Parole Board). Inmates only detained awaiting deportation are shown under 'Immigration Authority'.

The NSW Drug Court program commenced on 8 February 1999 as a non-custodial program for illicit drug dependent offenders charged with non-violent offences. Inmates shown with a court of 'Drug Court' are convicted offenders either (a) held in custody as unsentenced inmates by the Drug Court pending determination of or placement on their program, (b) in custody serving a 'sanction' for a breach of the Drug Court order or (c) had their program terminated and were subsequently ordered by the Drug Court to serve the original suspended sentence by imprisonment in full-time custody.

(j) Classification of offences

In this publication the classification of offences has been based on the Australian and New Zealand Standard Offence Classification (ANZSOC), 2011 (ABS Catalogue No. 1234.0). A summary of the classification is given in Appendix 1.

The ASOC 2011 classification was introduced into this publication for the first time in 2019. Between 2009 and 2018 the classification of offences was based on ASOC 2008. In 2007 and 2008 the classification of offences was based on ASOC 1997 (1st edition). Prior to 2007, offences were classified according to the Second Revision of the New South Wales Classification of Offences and of Care and Protection Orders for Children (ANCO). An ASOC to ANCO concordance is provided as part of the ABS publication .

Under ANZSOC 2011 offences involving attempts, threats, intentions, and conspiracies are generally classified in the same subdivision as the actual offence, whereas under ASOC 1997, conspiracy offences (with the exception of conspiracy to murder) were classified to 'Division 13 - Public Order Offences'. In this publication both the ASOC division and subdivisions to which the most serious offence was classified have been reported.

Trends series (Section 4) have also been revised to concord with ANZSOC 2011. ASOC 1997 data for years 1989 to 2009 have been revised using the ANZSOC to ANCO concordance. Prior to 1989 offence data was not recorded at a level of detail which enabled a re-mapping to ANZSOC 2011. This data remains mapped to ASOC 1997, however, at the division level, differences between ANZSOC editions for these time periods are not expected to be significant.

Improved coding procedures for sentenced and unsentenced inmates whose most serious offence/charge fell within ANZSOC/ASOC Division 16 - Miscellaneous Offences were introduced in 2012. Specifically these related to import / export regulations. Where possible, previous years' results presented in trend series have been revised, however, caution should be

exercised when comparing 2012 and later miscellaneous offence data with previous years.

(k) Most serious offence

Although an inmate may be held by CSNSW for a number of different offences, only the characteristics of the most serious of all offences in the current imprisonment episode is used in this publication. Generally, the most serious offence is selected as the offence for which the longest sentence was imposed for a single count, regardless of the possible result of any appeals. For the purpose of this calculation, offences where no sentence had been imposed at the time of the sentence (i.e. remand orders) are treated as having a sentence length of zero.

Where the longest sentence was imposed on more than one offence, the most serious offence was identified using the National Offence Index (NOI) associated with each ANZSOC (2011) group. In 2008, following the adoption of ASOC (1997), the same methodology was used but was based on the NOI (1997). Prior to 2008 the offence with the lowest NSW ANCO code was selected as the most serious offence where the longest sentence was imposed on more than one offence. A table detailing historical trends in most serious offence based on ANZSOC division is provided in Section 4 (see Table 4.8).

(l) Federal offences

The identification of inmates with federal offence(s) is based on the federal status of all offences relating to the current imprisonment episode regardless of whether, at the time of the Census, a sentence had been imposed or had expired for that offence. Federal offences are identified by CSNSW staff using information recorded on court documents provided to the agency.

(m) Aggregate sentence

This item represents the longest period that a person may be detained under sentence in the current episode and includes any 'balance of sentence' terms. Pending charges that are likely to extend the aggregate sentence are ignored. In the case of an inmate serving the balance of a sentence after revocation of parole or licence, only the balance of the sentence is included, as distinct from publications previous to 1998 where the whole of the original sentence was included.

For the purpose of this publication, the aggregate sentence category 'Forensic patient' includes all persons with a legal status or sentence type of 'Forensic patient' regardless of any other sentence imposed during the current episode. The aggregate sentence length for 'Life' and certain 'Forensic patient' sentence types is indeterminate as the sentencing authority

does not impose a sentence expiry date for these sentences (refer to explanatory note (h) above).

(n) Inmate security classification

Inmates in correctional centres are classified in accordance with the *Crimes (Administration of Sentences) Regulation 2014* (Clauses 12, 13, 14 and 14A). Inmates held at the Compulsory Drug Treatment Centre are not classified according to the regulations and are shown separately. Security classification sub-categories for unsentenced inmates were introduced into this publication in 1999. In this publication the security classification current at the time of the Census is shown. It should be noted that some convicted inmates may have an 'unconvicted' inmate security classification if they were facing further and more serious charges or they had not been re-classified at the time of the Census.

A new security classification category of "Life" was created under Clause 14A of the *Crimes (Administration of Sentences) Amendment (Classification of Inmates) Regulation 2018*. This legislation came into force from 6 April 2018.

On summary sheets, Maximum security includes both convicted and unconvicted inmates classified as Life, AA, A1, A2, E1 and Category 5 (females). Medium security includes both convicted and unconvicted inmates classified as B, E2 and Category 4 (Females). Minimum security includes both convicted and unconvicted inmates classified as C1, C2, C3, Category 1, 2 and 3 (females) and inmates held at the Compulsory Drug Treatment Centre.

(o) Statistical area of last known address

The statistical area of last known address reported in this publication is based on the self reported postcode of last known address at the time of the Census. Postcodes were mapped to the statistical areas within the *Australian Statistical Geographical Standard (ASGS) (Australian Bureau of Statistics Catalogue No: 1270.0, ABS 2011)*. Publications prior to 2011 were mapped (as Statistical Sub-divisions) to the *Australian Standard Geographical Classification (ASGC) (Catalogue No: 1216.0, ABS 2009)*.

(p) Significant events

Reforms for the re-sentencing of offenders who were subject to a periodic detention order came into effect on 24 September 2018 under the *Crimes (Sentencing Procedure) Amendment (Sentencing Options) Act 2017 No 53*. From that date all periodic detention orders ceased to apply and a process of re-sentencing those offenders was introduced. The section of this report detailing periodic detainees has been removed.

The following is a summary of legislative and operational changes enacted between 30 June 2019 and 30 June 2020 which may have had a significant impact on the size and characteristics of the NSW inmate population:

- Illawarra Reintegration Centre closed in March 2020.
- Ivanhoe (Warakirri) Centre closed in March 2020.
- Outer Metropolitan Multi-Purpose Correctional Centre renamed to Geoffrey Pearce Correctional Centre in April 2020.
- Berrima Correctional Centre closed in May 2020.
- Brewarrina (Yetta Dhinnakkal) Centre closed in May 2020.
- Kariong Correctional Centre re-purposed to a 24-hour court complex in June 2020.

Symbols

- * represents percentage values of less than 0.05%

Section 1

FULL-TIME CUSTODY INMATES

- inmates held in gazetted
correctional centres, transitional
centres and police/court complexes
in NSW

FULL-TIME CUSTODY INMATES Statistical Summary

0	Total persons					12731	
	Gender						
		Male				11895	(93.4%)
		Female				836	(6.6%)
2	Aboriginality						
		Aboriginal/TSI				3337	(26.2%)
		Non-Aboriginal/TSI				9385	(73.7%)
		Unknown				9	(0.1%)
0	Age						
	Age group	Male	%	Female	%	Total	%
2	18 to 24	1531	12.9%	123	14.7%	1654	(13.0%)
	25 to 34	4105	34.5%	300	35.9%	4405	(34.6%)
	35 to 44	3283	27.6%	242	28.9%	3525	(27.7%)
	45 and over	2976	25.0%	171	20.5%	3147	(24.7%)
	Country of birth						
		Australian born				9451	(74.2%)
		Overseas born				2349	(18.5%)
		Unknown				931	(7.3%)
S	English speaking status of country of birth						
		Australian born				9451	(74.2%)
		Other English speaking				534	(4.2%)
		Non-English speaking				1815	(14.3%)
		Unknown				931	(7.3%)
U	Prior adult imprisonment (including remand)						
		Yes				8747	(68.7%)
		No				3984	(31.3%)
S	Maximum period of imprisonment						
		Unsentenced				4137	(32.5%)
		Less than 2 years				2637	(20.7%)
		2 to less than 5 years				2112	(16.6%)
		5 to less than 20 years				3085	(24.2%)
		20 years +				578	(4.5%)
		Life/Forensic patient				182	(1.4%)
W	Inmate security classification						
	Security level	Convicted	%	Unconvicted	%	Total	%
	Maximum	1575	18.6%	1854	43.7%	3429	26.9%
	Medium	1938	22.8%	1632	38.5%	3570	28.0%
	Minimum	4831	56.9%	431	10.2%	5262	41.3%
	Unclassified	145	1.7%	325	7.7%	470	3.7%
	Total	8489	100%	4242	100%	12731	100%

Table 1.1 Demographic characteristics

	GENDER				TOTAL	
	Male		Female			
Age at Census date (years)						
18	45	0.4%	3	0.4%	48	0.4%
19	151	1.3%	5	0.6%	156	1.2%
20	187	1.6%	17	2.0%	204	1.6%
21-22	511	4.3%	50	6.0%	561	4.4%
23-24	637	5.4%	48	5.7%	685	5.4%
25-29	2076	17.5%	150	17.9%	2226	17.5%
30-34	2029	17.1%	150	17.9%	2179	17.1%
35-39	1863	15.7%	141	16.9%	2004	15.7%
40-44	1420	11.9%	101	12.1%	1521	11.9%
45-49	1065	9.0%	74	8.9%	1139	8.9%
50-54	594	5.0%	42	5.0%	636	5.0%
55-59	587	4.9%	33	3.9%	620	4.9%
60-64	304	2.6%	13	1.6%	317	2.5%
65 +	426	3.6%	9	1.1%	435	3.4%
Aboriginality						
Aboriginal/Torres Strait Islander	3056	25.7%	281	33.6%	3337	26.2%
Non-Aboriginal	8831	74.2%	554	66.3%	9385	73.7%
Unknown	8	0.1%	1	0.1%	9	0.1%
Known prior imprisonment as an adult						
Known prior imprisonment	8210	69.0%	537	64.2%	8747	68.7%
- full-time custody (convicted)	6526	54.9%	381	45.6%	6907	54.3%
- full-time custody (fine only)	2	*	--	--	2	*
- full-time custody (remand)	1655	13.9%	154	18.4%	1809	14.2%
- periodic detention	27	0.2%	2	0.2%	29	0.2%
No prior imprisonment	3685	31.0%	299	35.8%	3984	31.3%
- prior community based order	951	8.0%	84	10.0%	1035	8.1%
- no prior imprisonment or community order	2734	23.0%	215	25.7%	2949	23.2%
Marital status at reception						
Never married	7399	62.2%	490	58.6%	7889	62.0%
Married/de-facto	3451	29.0%	259	31.0%	3710	29.1%
Separated	302	2.5%	21	2.5%	323	2.5%
Divorced	392	3.3%	38	4.5%	430	3.4%
Widowed	30	0.3%	7	0.8%	37	0.3%
Unknown	321	2.7%	21	2.5%	342	2.7%
English speaking status of country of birth						
Australian born	8821	74.2%	630	75.4%	9451	74.2%
Other English speaking	503	4.2%	31	3.7%	534	4.2%
Non-English speaking	1703	14.3%	112	13.4%	1815	14.3%
Country of birth unknown	868	7.3%	63	7.5%	931	7.3%
TOTAL	11895	100.0%	836	100.0%	12731	100.0%

* Less than 0.05%

Table 1.2 Legal status characteristics

	GENDER				TOTAL	
	Male		Female			
Legal status						
Under sentence - no appeal	7625	64.1%	484	57.9%	8109	63.7%
Appellant	351	3.0%	36	4.3%	387	3.0%
Forensic patient	95	0.8%	3	0.4%	98	0.8%
Remand/trial ¹	3823	32.1%	313	37.4%	4136	32.5%
Awaiting deportation	1	*	--	--	1	*
Awaiting extradition	--	--	--	--	--	--
Civil inmate	--	--	--	--	--	--
Type of sentence						
Not under sentence	3824	32.1%	313	37.4%	4137	32.5%
Life	82	0.7%	3	0.4%	85	0.7%
Forensic patient	95	0.8%	3	0.4%	98	0.8%
Sentence/Non Parole	6730	56.6%	391	46.8%	7121	55.9%
Sentence/Parole declined	1164	9.8%	126	15.1%	1290	10.1%
Level of Court of most serious offence						
Supreme	1122	9.4%	74	8.9%	1196	9.4%
District	5589	47.0%	308	36.8%	5897	46.3%
Local	4028	33.9%	333	39.8%	4361	34.3%
State Parole Authority	1023	8.6%	104	12.4%	1127	8.9%
Drug Court	118	1.0%	14	1.7%	132	1.0%
Children's Court	10	0.1%	--	--	10	0.1%
Federal/Other	4	*	2	0.2%	6	*
Immigration Authority	1	*	1	0.1%	2	*
State of Court of most serious offence						
New South Wales	11863	99.7%	833	99.6%	12696	99.7%
Victoria	7	0.1%	--	--	7	0.1%
Queensland	4	*	1	0.1%	5	*
South Australia	1	*	--	--	1	*
Western Australia	12	0.1%	--	--	12	0.1%
Tasmania	--	--	--	--	--	--
Northern Territory	1	*	--	--	1	*
Australian Capital Territory	2	*	--	--	2	*
Overseas	5	*	2	0.2%	7	0.1%
TOTAL	11895	100.0%	836	100.0%	12731	100.0%

* Less than 0.05%

1. Remand/trial includes awaiting sentence - see explanatory note (g).

Table 1.3 Characteristics of offences and sentences

	GENDER				TOTAL	
	Male		Female			
Most serious offence (MSO) ¹						
Homicide and related offences	907	7.6%	83	9.9%	990	7.8%
Murder	644	5.4%	53	6.3%	697	5.5%
Attempted murder	103	0.9%	11	1.3%	114	0.9%
Manslaughter and driving causing death	160	1.3%	19	2.3%	179	1.4%
Acts intended to cause injury	2909	24.5%	190	22.7%	3099	24.3%
Assault	2584	21.7%	173	20.7%	2757	21.7%
Other acts intended to cause injury	325	2.7%	17	2.0%	342	2.7%
Sexual assault and related offences	2077	17.5%	31	3.7%	2108	16.6%
Sexual assault	1845	15.5%	30	3.6%	1875	14.7%
Non-assaultive sexual offences	232	2.0%	1	0.1%	233	1.8%
Dangerous or negligent acts endang. persons	293	2.5%	21	2.5%	314	2.5%
Dangerous or negligent operation of vehicle	291	2.4%	20	2.4%	311	2.4%
Other dangerous or negligent acts	2	*	1	0.1%	3	*
Abduction, harassment and other offences	195	1.6%	20	2.4%	215	1.7%
Abduction and kidnapping	141	1.2%	16	1.9%	157	1.2%
Deprivation of liberty / false imprisonment	5	*	1	0.1%	6	*
Harassment and threatening behaviour	49	0.4%	3	0.4%	52	0.4%
Robbery, extortion and related offences	674	5.7%	33	3.9%	707	5.6%
Robbery	669	5.6%	32	3.8%	701	5.5%
Blackmail and extortion	5	*	1	0.1%	6	*
Unlawful entry with intent/burglary, B&E	724	6.1%	50	6.0%	774	6.1%
Theft and related offences	261	2.2%	50	6.0%	311	2.4%
Motor vehicle theft and related offences	73	0.6%	5	0.6%	78	0.6%
Theft (except motor vehicles)	114	1.0%	33	3.9%	147	1.2%
Receive or handle proceeds of crime	74	0.6%	12	1.4%	86	0.7%
Fraud, deception and related offences	228	1.9%	60	7.2%	288	2.3%
Obtain benefit by deception	209	1.8%	56	6.7%	265	2.1%
Forgery and counterfeiting	6	0.1%	--	--	6	*
Deceptive business/government practices	2	*	--	--	2	*
Other fraud and deception offences	11	0.1%	4	0.5%	15	0.1%
Illicit drug offences	1835	15.4%	152	18.2%	1987	15.6%
Import or export illicit drugs	390	3.3%	25	3.0%	415	3.3%
Deal or traffic in illicit drugs	1231	10.3%	115	13.8%	1346	10.6%
Manufacture or cultivate illicit drugs	196	1.6%	12	1.4%	208	1.6%
Possess and/or use illicit drugs	18	0.2%	--	--	18	0.1%
Other illicit drug offences	--	--	--	--	--	--
Prohibited and regulated weapons etc.	267	2.2%	7	0.8%	274	2.2%
Prohibited weapons/explosives	154	1.3%	5	0.6%	159	1.2%
Regulated weapons/explosives	113	0.9%	2	0.2%	115	0.9%
Property damage and environmental pollution	93	0.8%	8	1.0%	101	0.8%
Public order offences	47	0.4%	3	0.4%	50	0.4%
Disorderly conduct	38	0.3%	3	0.4%	41	0.3%
Regulated public order offences	3	*	--	--	3	*
Offensive conduct	6	0.1%	--	--	6	*
Traffic and vehicle regulatory offences	94	0.8%	5	0.6%	99	0.8%
Driving licence offences	64	0.5%	4	0.5%	68	0.5%
Road vehicle registration and roadworthiness	--	--	--	--	--	--
Regulatory driving offences	30	0.3%	1	0.1%	31	0.2%
Pedestrian offences	--	--	--	--	--	--
Offences against justice procedures etc.	1256	10.6%	118	14.1%	1374	10.8%
Breach of custodial order offences	9	0.1%	--	--	9	0.1%
Breach of community-based orders	1077	9.1%	106	12.7%	1183	9.3%
Breach of violence and non-violence orders	75	0.6%	2	0.2%	77	0.6%
Offences against government operations	4	*	2	0.2%	6	*
Offences against government security	41	0.3%	--	--	41	0.3%
Offences against justice procedures	50	0.4%	8	1.0%	58	0.5%
Miscellaneous offences	35	0.3%	5	0.6%	40	0.3%
TOTAL	11895	100.0%	836	100.0%	12731	100.0%

* Less than 0.05%

1. Offences classified under Australian and New Zealand Standard Offence Classification 2011 - see explanatory note (j).

Table 1.3 Characteristics of offences and sentences (continued)

	GENDER				TOTAL	
	Male		Female			
Length of aggregate sentence						
Not under sentence	3824	32.1%	313	37.4%	4137	32.5%
1 - 7 days	--	--	--	--	--	--
8 - < 1 month	5	*	--	--	5	*
1 month - < 3 months	82	0.7%	22	2.6%	104	0.8%
3 months - < 6 months	248	2.1%	38	4.5%	286	2.2%
6 months - < 9 months	284	2.4%	29	3.5%	313	2.5%
9 months - < 1 year	325	2.7%	34	4.1%	359	2.8%
1 - < 2 years	1464	12.3%	106	12.7%	1570	12.3%
2 - < 5 years	1980	16.6%	132	15.8%	2112	16.6%
5 - < 7 years	906	7.6%	50	6.0%	956	7.5%
7 - < 10 years	913	7.7%	44	5.3%	957	7.5%
10 - < 15 years	782	6.6%	17	2.0%	799	6.3%
15 - < 20 years	358	3.0%	15	1.8%	373	2.9%
20 years +	548	4.6%	30	3.6%	578	4.5%
Life	81	0.7%	3	0.4%	84	0.7%
Forensic patient	95	0.8%	3	0.4%	98	0.8%
Indeterminate sentences - Life sentence and Forensic patients						
Not Life or Forensic/correctional patient	11719	98.5%	830	99.3%	12549	98.6%
Life 'Natural Life'	56	0.5%	1	0.1%	57	0.4%
Life - yet to be redetermined	--	--	--	--	--	--
Life / Non Parole period	23	0.2%	2	0.2%	25	0.2%
Life - Breach of parole/licence	--	--	--	--	--	--
Life (ACT)	--	--	--	--	--	--
Life (Federal)	2	*	--	--	2	*
Life (Overseas)	--	--	--	--	--	--
Forensic patient - Indeterminate term	61	0.5%	2	0.2%	63	0.5%
Forensic patient - Limiting term	9	0.1%	--	--	9	0.1%
Correctional patient ¹ - under sentence	18	0.2%	--	--	18	0.1%
Correctional patient ¹ - unsentenced	7	0.1%	1	0.1%	8	0.1%
Is any offence a federal offence ?						
Yes	996	8.4%	60	7.2%	1056	8.3%
No	10899	91.6%	776	92.8%	11675	91.7%
Is the most serious offence a federal offence ?						
Yes	838	7.0%	56	6.7%	894	7.0%
No	11057	93.0%	780	93.3%	11837	93.0%
TOTAL	11895	100.0%	836	100.0%	12731	100.0%

* less than 0.05%.

1. See explanatory note (h).

Table 1.3 Characteristics of offences and sentences (continued)

	GENDER				TOTAL	
	Male		Female			
Is the inmate serving a term for breach of parole, licence or escape ?						
Not breach of parole/licence or escapee	9854	82.8%	742	88.8%	10596	83.2%
Breach of parole	2018	17.0%	94	11.2%	2112	16.6%
Breach of licence	--	--	--	--	--	--
Escape	17	0.1%	--	--	17	0.1%
Breach of parole and escape	6	0.1%	--	--	6	*
Are there any other offences for inmates whose MSO is breach of parole/licence ?						
MSO not breach of parole/licence	11880	99.9%	834	99.8%	12714	99.9%
No other offence (excludes fines)	2	*	--	--	2	*
Remand for other offence(s)	9	0.1%	1	0.1%	10	0.1%
Convicted for other offence(s)	4	*	1	0.1%	5	*
Is the inmate in full-time custody having breached an order (other than parole/licence)?						
In full-time - no breach	11211	94.2%	743	88.9%	11954	93.9%
Sentenced - breach of periodic detention	2	*	--	--	2	*
Sentenced - breach of home detention	2	*	--	--	2	*
Sentenced - breach of intensive correction order	680	5.7%	93	11.1%	773	6.1%
Remanded - breach of periodic detention	--	--	--	--	--	--
Remanded - breach of home detention	--	--	--	--	--	--
Remanded - breach of intensive correction order	--	--	--	--	--	--
Time to serve to earliest date of release (EDR)						
Unsentenced	3824	32.1%	313	37.4%	4137	32.5%
Earliest date of release lapsed	272	2.3%	5	0.6%	277	2.2%
< 3 months	1677	14.1%	153	18.3%	1830	14.4%
3 - < 6 months	1246	10.5%	110	13.2%	1356	10.7%
6 - < 12 months	1409	11.8%	98	11.7%	1507	11.8%
1 - < 2 years	1331	11.2%	74	8.9%	1405	11.0%
2 - < 5 years	1198	10.1%	44	5.3%	1242	9.8%
5 years +	762	6.4%	33	3.9%	795	6.2%
Indeterminate (Life/forensic patient) ¹	176	1.5%	6	0.7%	182	1.4%
TOTAL	11895	100.0%	836	100.0%	12731	100.0%

1. Includes all inmates with a type of sentence of Life or Forensic patient regardless of whether an earliest date of release exists for that inmate.

Table 1.4 Inmate security classification

	GENDER				TOTAL	
	Male		Female			
Security classification of inmate ¹						
Maximum security classification						
Maximum security - Convicted	1564	13.1%	11	1.3%	1575	12.4%
Life	53	0.4%	1	0.1%	54	0.4%
AA	30	0.3%	--	--	30	0.2%
A1	17	0.1%	--	--	17	0.1%
A2	1296	10.9%	--	--	1296	10.2%
E1	168	1.4%	10	1.2%	178	1.4%
Category 5 (Female)	--	--	--	--	--	--
Maximum security - Unconvicted	1851	15.6%	3	0.4%	1854	14.6%
Unconvicted AA	8	0.1%	--	--	8	0.1%
Unconvicted A1	--	--	--	--	--	--
Unconvicted A2	1763	14.8%	--	--	1763	13.8%
Unconvicted E1	80	0.7%	3	0.4%	83	0.7%
Unconvicted Category 5 (Female)	--	--	--	--	--	--
Sub-total Maximum security	3415	28.7%	14	1.7%	3429	26.9%
Medium security classification						
Medium security - Convicted	1868	15.7%	70	8.4%	1938	15.2%
B	1593	13.4%	--	--	1593	12.5%
E2	275	2.3%	2	0.2%	277	2.2%
Category 4 (Female)	--	--	68	8.1%	68	0.5%
Medium security - Unconvicted	1518	12.8%	114	13.6%	1632	12.8%
Unconvicted B	1395	11.7%	1	0.1%	1396	11.0%
Unconvicted E2	123	1.0%	4	0.5%	127	1.0%
Unconvicted Category 4 (Female)	--	--	109	13.0%	109	0.9%
Sub-total Medium security	3386	28.5%	184	22.0%	3570	28.0%
Minimum security classification						
Minimum security - Convicted	4413	37.1%	418	50.0%	4831	37.9%
C1	1311	11.0%	--	--	1311	10.3%
C2	2790	23.5%	--	--	2790	21.9%
C3	269	2.3%	--	--	269	2.1%
Compulsory Drug Treatment Centre	42	0.4%	--	--	42	0.3%
Category 3 (Female)	--	--	117	14.0%	117	0.9%
Category 2 (Female)	1	*	257	30.7%	258	2.0%
Category 1 (Female)	--	--	44	5.3%	44	0.3%
Minimum security - Unconvicted	274	2.3%	157	18.8%	431	3.4%
Unconvicted C1	274	2.3%	--	--	274	2.2%
Unconvicted Category 3 (Female)	--	--	95	11.4%	95	0.7%
Unconvicted Category 2 (Female)	--	--	62	7.4%	62	0.5%
Sub-total Minimum	4687	39.4%	575	68.8%	5262	41.3%
Unclassified						
Unclassified - convicted	127	1.1%	18	2.2%	145	1.1%
Unclassified - unconvicted	280	2.4%	45	5.4%	325	2.6%
Sub-total Unclassified	407	3.4%	63	7.5%	470	3.7%
TOTAL	11895	100.0%	836	100.0%	12731	100.0%

1. Some convicted inmates may have an "unconvicted" inmate classification if they were facing further and more serious charges or had not been re-classified at the time of the census. Therefore the total number of inmates with "convicted" inmate classifications may not be equal to the total number of convicted inmates.

* less than 0.05%.

Table 1.5 Location and correctional centre security classification

	GENDER				TOTAL	
	Male		Female			
Correctional centre by security rating						
Maximum security						
Goulburn (Maximum)	384	3.2%	--	--	384	3.0%
High Risk Management	111	0.9%	--	--	111	0.9%
Hunter	350	2.9%	--	--	350	2.7%
Junee (Maximum)	153	1.3%	4	0.5%	157	1.2%
Lithgow	381	3.2%	--	--	381	3.0%
Long Bay Hospital	470	4.0%	2	0.2%	472	3.7%
Macquarie	332	2.8%	--	--	332	2.6%
Mary Wade	--	--	69	8.3%	69	0.5%
Metropolitan Remand and Reception	788	6.6%	1	0.1%	789	6.2%
Metro. Special Programs (Maximum)	699	5.9%	--	--	699	5.5%
Mid-North Coast (Maximum)	593	5.0%	--	--	593	4.7%
Parklea (Maximum)	1110	9.3%	--	--	1110	8.7%
Shortland	512	4.3%	--	--	512	4.0%
Silverwater Women's	--	--	250	29.9%	250	2.0%
South Coast (Maximum)	416	3.5%	--	--	416	3.3%
Special Purpose Centre (Maximum)	37	0.3%	1	0.1%	38	0.3%
Wellington (Maximum)	402	3.4%	--	--	402	3.2%
Sub-total Maximum security	6738	56.6%	327	39.1%	7065	55.5%
Medium security						
Bathurst (Medium)	379	3.2%	2	0.2%	381	3.0%
Broken Hill (Medium)	38	0.3%	--	--	38	0.3%
Cooma	132	1.1%	--	--	132	1.0%
Dillwynia (Medium)	1	*	210	25.1%	211	1.7%
Grafton (Medium)	71	0.6%	4	0.5%	75	0.6%
John Morony (Medium)	414	3.5%	--	--	414	3.3%
Junee (Medium)	495	4.2%	--	--	495	3.9%
Mid-North Coast (Medium)	--	--	49	5.9%	49	0.4%
South Coast (Medium)	202	1.7%	--	--	202	1.6%
Tamworth (Medium)	45	0.4%	--	--	45	0.4%
Sub-total Medium security	1777	14.9%	265	31.7%	2042	16.0%
Minimum security						
Bathurst (Minimum)	129	1.1%	--	--	129	1.0%
Broken Hill (Minimum)	24	0.2%	--	--	24	0.2%
Cessnock (Minimum)	439	3.7%	--	--	439	3.4%
Compulsory Drug Treatment	42	0.4%	--	--	42	0.3%
Cooma	41	0.3%	--	--	41	0.3%
Dawn de Loas	434	3.6%	--	--	434	3.4%
Dillwynia (Minimum)	--	--	14	1.7%	14	0.1%
Emu Plains	--	--	118	14.1%	118	0.9%
Geoffrey Pearce	255	2.1%	--	--	255	2.0%
Glen Innes	150	1.3%	--	--	150	1.2%
Goulburn (Minimum)	79	0.7%	--	--	79	0.6%
Grafton (Minimum)	--	--	12	1.4%	12	0.1%
Junee (Minimum)	138	1.2%	--	--	138	1.1%
Kirkconnell	259	2.2%	--	--	259	2.0%
Mannus	159	1.3%	--	--	159	1.2%
Metro. Special Programs (Minimum)	348	2.9%	--	--	348	2.7%
Mid-North Coast (Minimum)	103	0.9%	--	--	103	0.8%
Oberon	128	1.1%	--	--	128	1.0%
Parklea (Minimum)	101	0.8%	--	--	101	0.8%
South Coast (Minimum)	157	1.3%	--	--	157	1.2%
St. Heliers	222	1.9%	--	--	222	1.7%
Tamworth (Minimum)	19	0.2%	--	--	19	0.1%
Wellington (Minimum)	101	0.8%	52	6.2%	153	1.2%
Sub-total Minimum security	3328	28.0%	196	23.4%	3524	27.7%
Sub-total Correctional Centres	11843	99.6%	788	94.3%	12631	99.2%

Table 1.5 Location and correctional centre security classification (continued)

	GENDER				TOTAL	
	Male		Female			
Transitional Centres						
Bolwara House Transitional Centres	--	--	16	1.9%	16	0.1%
Parramatta Transitional Centre	--	--	16	1.9%	16	0.1%
Sub-total Transitional Centres	--	--	32	3.8%	32	0.3%
Court/Police Cell Complexes						
Albury	--	--	1	0.1%	1	*
Amber Laurel	12	0.1%	2	0.2%	14	0.1%
Batemans Bay	--	--	--	--	--	--
Dubbo	1	*	--	--	1	*
Kariong	10	0.1%	1	0.1%	11	0.1%
Lismore	9	0.1%	--	--	9	0.1%
Moree	--	--	--	--	--	--
Newcastle	4	*	2	0.2%	6	*
Parramatta	--	--	--	--	--	--
Penrith	--	--	--	--	--	--
Port Macquarie	2	*	1	0.1%	3	*
Queanbeyan	--	--	--	--	--	--
Surry Hills (Sydney)	12	0.1%	8	1.0%	20	0.2%
Wagga Wagga	--	--	--	--	--	--
Wollongong	2	*	1	0.1%	3	*
Sub-total Court/Police Cell Complexes	52	0.4%	16	1.9%	68	0.5%
TOTAL	11895	100.0%	836	100.0%	12731	100.0%

* less than 0.05%

Table 1.6 Country of birth

Country of birth	GENDER				TOTAL	
	Male		Female			
OCEANIA AND ANTARCTICA						
AUSTRALIA (incl. ext. territories)	8821	74.2%	630	75.4%	9451	74.2%
- New South Wales	6053	50.9%	407	48.7%	6460	50.7%
- Victoria	133	1.1%	15	1.8%	148	1.2%
- Queensland	259	2.2%	18	2.2%	277	2.2%
- South Australia	34	0.3%	2	0.2%	36	0.3%
- Western Australia	33	0.3%	1	0.1%	34	0.3%
- Tasmania	22	0.2%	2	0.2%	24	0.2%
- Northern Territory	11	0.1%	2	0.2%	13	0.1%
- Australian Capital Territory	59	0.5%	2	0.2%	61	0.5%
- Australian External Territories	--	--	--	--	--	--
- Australia (not further defined)	2217	18.6%	181	21.7%	2398	18.8%
- Norfolk Island	--	--	--	--	--	--
NEW ZEALAND	268	2.3%	20	2.4%	288	2.3%
MELANESIA	11	0.1%	1	0.1%	12	0.1%
- Papua New Guinea	9	0.1%	1	0.1%	10	0.1%
- Solomon Islands	1	*	--	--	1	*
- Vanuatu	1	*	--	--	1	*
MICRONESIA	--	--	--	--	--	--
POLYNESIA (excl. Hawaii)	160	1.3%	8	1.0%	168	1.3%
- Cook Islands	14	0.1%	--	--	14	0.1%
- Fiji	66	0.6%	6	0.7%	72	0.6%
- French Polynesia	--	--	--	--	--	--
- Samoa	51	0.4%	--	--	51	0.4%
- Samoa American	--	--	--	--	--	--
- Tokelau	1	*	--	--	1	*
- Tonga	28	0.2%	2	0.2%	30	0.2%
- Tuvalu	--	--	--	--	--	--
Sub-total						
OCEANIA AND ANTARCTICA	9260	77.8%	659	78.8%	9919	77.9%
NORTH-WEST EUROPE						
UNITED KINGDOM	141	1.2%	6	0.7%	147	1.2%
- England	116	1.0%	6	0.7%	122	1.0%
- Isle of Man	--	--	--	--	--	--
- Northern Ireland	5	*	--	--	5	*
- Scotland	16	0.1%	--	--	16	0.1%
- Wales	4	*	--	--	4	*
IRELAND	24	0.2%	--	--	24	0.2%
WESTERN EUROPE	46	0.4%	3	0.4%	49	0.4%
- Austria	10	0.1%	--	--	10	0.1%
- Belgium	3	*	--	--	3	*
- France	9	0.1%	1	0.1%	10	0.1%
- Germany	18	0.2%	1	0.1%	19	0.1%
- Monaco	--	--	--	--	--	--
- Netherlands	6	0.1%	1	0.1%	7	0.1%
- Switzerland	--	--	--	--	--	--
NORTHERN EUROPE	1	*	--	--	1	*
- Denmark	--	--	--	--	--	--
- Finland	1	*	--	--	1	*
- Iceland	--	--	--	--	--	--
- Norway	--	--	--	--	--	--
- Sweden	--	--	--	--	--	--
Sub-total						
NORTH-WEST EUROPE	212	1.8%	9	1.1%	221	1.7%

* Less than 0.05%

Table 1.6 Country of birth (continued)

Country of birth (continued)	GENDER				TOTAL	
	Male		Female			
SOUTHERN AND EASTERN EUROPE						
SOUTHERN EUROPE	34	0.3%	--	--	34	0.3%
- Italy	15	0.1%	--	--	15	0.1%
- Malta	3	*	--	--	3	*
- Portugal	7	0.1%	--	--	7	0.1%
- Spain	9	0.1%	--	--	9	0.1%
SOUTH EASTERN EUROPE	90	0.8%	2	0.2%	92	0.7%
- Albania	6	0.1%	--	--	6	*
- Bosnia-Herzegovina	11	0.1%	--	--	11	0.1%
- Bulgaria	1	*	--	--	1	*
- Croatia	11	0.1%	1	0.1%	12	0.1%
- Cyprus	3	*	--	--	3	*
- Fmr Yugoslav Rep. of Macedonia	26	0.2%	--	--	26	0.2%
- Greece	16	0.1%	--	--	16	0.1%
- Romania	7	0.1%	1	0.1%	8	0.1%
- Slovenia	--	--	--	--	--	--
- Montenegro	--	--	--	--	--	--
- Serbia	9	0.1%	--	--	9	0.1%
EASTERN EUROPE	34	0.3%	1	0.1%	35	0.3%
- Belarus	--	--	--	--	--	--
- Czech Republic	4	*	1	0.1%	5	*
- Estonia	1	*	--	--	1	*
- Hungary	4	*	--	--	4	*
- Latvia	--	--	--	--	--	--
- Lithuania	1	*	--	--	1	*
- Poland	11	0.1%	--	--	11	0.1%
- Russian Federation	10	0.1%	--	--	10	0.1%
- Ukraine	3	*	--	--	3	*
Sub-total						
SOUTHERN AND EASTERN EUROPE	158	1.3%	3	0.4%	161	1.3%
NORTH AFRICA AND THE MIDDLE EAST						
NORTH AFRICA	64	0.5%	4	0.5%	68	0.5%
- Algeria	1	*	--	--	1	*
- Egypt	20	0.2%	--	--	20	0.2%
- Libya	1	*	--	--	1	*
- Sudan	41	0.3%	3	0.4%	44	0.3%
- Tunisia	1	*	--	--	1	*
- Western Sahara	--	--	--	--	--	--
MIDDLE EAST	336	2.8%	8	1.0%	344	2.7%
- Gaza Strip and West Bank	5	*	--	--	5	*
- Iran	72	0.6%	1	0.1%	73	0.6%
- Iraq	66	0.6%	3	0.4%	69	0.5%
- Israel	--	--	--	--	--	--
- Jordan	8	0.1%	--	--	8	0.1%
- Kuwait	5	*	--	--	5	*
- Lebanon	132	1.1%	3	0.4%	135	1.1%
- Saudi Arabia	6	0.1%	--	--	6	*
- Syria	10	0.1%	--	--	10	0.1%
- Turkey	30	0.3%	1	0.1%	31	0.2%
- United Arab Emirates	2	*	--	--	2	*
Sub-total						
NORTH AFRICA AND THE MIDDLE EAST	400	3.4%	12	1.4%	412	3.2%

* Less than 0.05%

Table 1.6 Country of birth (continued)

Country of birth (continued)	GENDER				TOTAL	
	Male		Female			
SOUTH-EAST ASIA						
MAINLAND SOUTH-EAST ASIA	264	2.2%	45	5.4%	309	2.4%
- Burma (Myanmar)	2	*	--	--	2	*
- Cambodia	9	0.1%	3	0.4%	12	0.1%
- Laos	9	0.1%	2	0.2%	11	0.1%
- Thailand	21	0.2%	6	0.7%	27	0.2%
- Viet Nam	223	1.9%	34	4.1%	257	2.0%
MARITIME SOUTH-EAST ASIA	118	1.0%	9	1.1%	127	1.0%
- Brunei Darussalam	--	--	--	--	--	--
- Indonesia	13	0.1%	1	0.1%	14	0.1%
- Malaysia	41	0.3%	1	0.1%	42	0.3%
- Philippines	56	0.5%	7	0.8%	63	0.5%
- Singapore	6	0.1%	--	--	6	*
- East Timor	2	*	--	--	2	*
Sub-total	382	3.2%	54	6.5%	436	3.4%
SOUTHEAST ASIA						
NORTH-EAST ASIA						
CHINESE ASIA (incl. Mongolia)	212	1.8%	15	1.8%	227	1.8%
- China (excl. SAR's and Taiwan)	148	1.2%	12	1.4%	160	1.3%
- Hong Kong (SAR of China)	40	0.3%	2	0.2%	42	0.3%
- Macau	--	--	--	--	--	--
- Mongolia	5	*	--	--	5	*
- Taiwan	19	0.2%	1	0.1%	20	0.2%
JAPAN AND THE KOREAS	31	0.3%	1	0.1%	32	0.3%
- Japan	1	*	1	0.1%	2	*
- Korea, Democratic People's Republic of (North)	--	--	--	--	--	--
- Korea, Republic of (South)	30	0.3%	--	--	30	0.2%
Sub-total	243	2.0%	16	1.9%	259	2.0%
SOUTHERN AND CENTRAL ASIA						
SOUTHERN ASIA	113	0.9%	4	0.5%	117	0.9%
- Bangladesh	13	0.1%	--	--	13	0.1%
- India	50	0.4%	2	0.2%	52	0.4%
- Nepal	12	0.1%	2	0.2%	14	0.1%
- Pakistan	18	0.2%	--	--	18	0.1%
- Sri Lanka	20	0.2%	--	--	20	0.2%
CENTRAL ASIA	29	0.2%	--	--	29	0.2%
- Afghanistan	29	0.2%	--	--	29	0.2%
- Armenia	--	--	--	--	--	--
- Kazakhstan	--	--	--	--	--	--
Sub-total	142	1.2%	4	0.5%	146	1.1%
AMERICAS						
NORTHERN AMERICA	46	0.4%	3	0.4%	49	0.4%
- Bermuda	--	--	--	--	--	--
- Canada	20	0.2%	3	0.4%	23	0.2%
- United States of America	26	0.2%	--	--	26	0.2%

* Less than 0.05%

Table 1.6 Country of birth (continued)

Country of birth (continued)	GENDER				TOTAL	
	Male		Female			
AMERICAS (continued)						
SOUTH AMERICA	75	0.6%	7	0.8%	82	0.6%
- Argentina	3	*	--	--	3	*
- Bolivia	--	--	--	--	--	--
- Brazil	17	0.1%	4	0.5%	21	0.2%
- Chile	20	0.2%	2	0.2%	22	0.2%
- Colombia	20	0.2%	1	0.1%	21	0.2%
- Ecuador	3	*	--	--	3	*
- Peru	9	0.1%	--	--	9	0.1%
- Uruguay	2	*	--	--	2	*
- Venezuela	1	*	--	--	1	*
CENTRAL AMERICA	10	0.1%	2	0.2%	12	0.1%
- El Salvador	1	*	--	--	1	*
- Guatemala	2	*	--	--	2	*
- Honduras	--	--	--	--	--	--
- Mexico	5	*	2	0.2%	7	0.1%
- Nicaragua	2	*	--	--	2	*
CARIBBEAN	1	*	1	0.1%	2	*
- Barbados	--	--	--	--	--	--
- Dominican Republic	--	--	1	0.1%	1	*
- Jamaica	--	--	--	--	--	--
- St Vincent and the Grenadines	1	*	--	--	1	*
- Trinidad and Tobago	--	--	--	--	--	--
Sub-total AMERICAS	132	1.1%	13	1.6%	145	1.1%
SUB-SAHARAN AFRICA						
CENTRAL & WEST AFRICA	43	0.4%	1	0.1%	44	0.3%
- Benin	1	*	--	--	1	*
- Cameroon	--	--	--	--	--	--
- Congo	--	--	--	--	--	--
- Gambia	1	*	--	--	1	*
- Ghana	2	*	1	0.1%	3	*
- Liberia	6	0.1%	--	--	6	*
- Niger	1	*	--	--	1	*
- Nigeria	27	0.2%	--	--	27	0.2%
- Senegal	--	--	--	--	--	--
- Sierra Leone	5	*	--	--	5	*
SOUTHERN & EAST AFRICA	55	0.5%	2	0.2%	57	0.4%
- Ethiopia	2	*	--	--	2	*
- Kenya	7	0.1%	--	--	7	0.1%
- Malawi	1	*	--	--	1	*
- Mauritius	1	*	--	--	1	*
- Somalia	1	*	--	--	1	*
- South Africa	24	0.2%	2	0.2%	26	0.2%
- Tanzania	5	*	--	--	5	*
- Uganda	--	--	--	--	--	--
- Zambia	1	*	--	--	1	*
- Zimbabwe	5	*	--	--	5	*
- Southern & East Africa (nec)	8	0.1%	--	--	8	0.1%
Sub-total SUB-SAHARAN AFRICA	98	0.8%	3	0.4%	101	0.8%
UNKNOWN	868	7.3%	63	7.5%	931	7.3%
TOTAL	11895	100.0%	836	100.0%	12731	100.0%

* Less than 0.05%

nec - not elsewhere classified

Table 1.7 Statistical area of last known address

Statistical area (Level 4)	GENDER				TOTAL	
	Male		Female			
New South Wales						
Capital Region	287	2.4%	26	3.1%	313	2.5%
Central Coast	531	4.5%	47	5.6%	578	4.5%
Central West	379	3.2%	26	3.1%	405	3.2%
Coffs Harbour - Grafton	223	1.9%	15	1.8%	238	1.9%
Far West and Orana	392	3.3%	26	3.1%	418	3.3%
Hunter Valley exc Newcastle	455	3.8%	29	3.5%	484	3.8%
Illawarra	503	4.2%	32	3.8%	535	4.2%
Mid North Coast	375	3.2%	25	3.0%	400	3.1%
Murray	187	1.6%	11	1.3%	198	1.6%
New England and North West	407	3.4%	36	4.3%	443	3.5%
Newcastle and Lake Macquarie	575	4.8%	38	4.5%	613	4.8%
Richmond - Tweed	288	2.4%	15	1.8%	303	2.4%
Riverina	334	2.8%	19	2.3%	353	2.8%
Southern Highlands and Shoalhaven	225	1.9%	20	2.4%	245	1.9%
Sydney - Baulkham Hills and Hawkesbury	105	0.9%	4	0.5%	109	0.9%
Sydney - Blacktown	826	6.9%	51	6.1%	877	6.9%
Sydney - City and Inner South	721	6.1%	79	9.4%	800	6.3%
Sydney - Eastern Suburbs	323	2.7%	18	2.2%	341	2.7%
Sydney - Inner South West	928	7.8%	51	6.1%	979	7.7%
Sydney - Inner West	272	2.3%	14	1.7%	286	2.2%
Sydney - North Sydney and Hornsby	128	1.1%	10	1.2%	138	1.1%
Sydney - Northern Beaches	108	0.9%	11	1.3%	119	0.9%
Sydney - Outer South West	499	4.2%	23	2.8%	522	4.1%
Sydney - Outer West and Blue Mountains	532	4.5%	30	3.6%	562	4.4%
Sydney - Parramatta	840	7.1%	64	7.7%	904	7.1%
Sydney - Ryde	98	0.8%	9	1.1%	107	0.8%
Sydney - South West	866	7.3%	72	8.6%	938	7.4%
Sydney - Sutherland	141	1.2%	9	1.1%	150	1.2%
Sub-total New South Wales	11548	97.1%	810	96.9%	12358	97.1%
Victoria	69	0.6%	5	0.6%	74	0.6%
Queensland	98	0.8%	9	1.1%	107	0.8%
South Australia	11	0.1%	1	0.1%	12	0.1%
Western Australia	8	0.1%	--	--	8	0.1%
Tasmania	2	*	--	--	2	*
Northern Territory	2	*	--	--	2	*
Australian Capital Territory	13	0.1%	1	0.1%	14	0.1%
Sub-total other states/territories	203	1.7%	16	1.9%	219	1.7%
No fixed abode	24	0.2%	--	--	24	0.2%
Overseas	2	*	--	--	2	*
Unknown	118	1.0%	10	1.2%	128	1.0%
TOTAL	11895	100.0%	836	100.0%	12731	100.0%

Section 2

INDIGENOUS INMATES HELD IN FULL-TIME CUSTODY

- Indigenous inmates held in gazetted correctional centres, transitional centres and police/court complexes in NSW

INDIGENOUS INMATES Statistical Summary

0	Total persons					3337	
2	Gender						
		Male				3056	(91.6%)
		Female				281	(8.4%)
2	Aboriginality						
		Aboriginal/TSI				3337	(100.0%)
0	Age						
	Age group	Male	%	Female	%	Total	%
	18 to 24	613	20.1%	53	18.9%	666	(20.0%)
	25 to 34	1270	41.6%	118	42.0%	1388	(41.6%)
	35 to 44	750	24.5%	78	27.8%	828	(24.8%)
	45 and over	423	13.8%	32	11.4%	455	(13.6%)
	Country of birth						
		Australian born				3160	(94.7%)
		Overseas born				32	(1.0%)
		Unknown				145	(4.3%)
S	English speaking status of country of birth						
		Australian born				3160	(94.7%)
		Other English speaking				15	(0.4%)
		Non-English speaking				17	(0.5%)
		Unknown				145	(4.3%)
U	Prior adult imprisonment (including remand)						
		Yes				2871	(86.0%)
		No				466	(14.0%)
S	Maximum period of imprisonment						
		Unsentenced				1144	(34.3%)
		Less than 2 years				966	(28.9%)
		2 to less than 5 years				580	(17.4%)
		5 to less than 20 years				523	(15.7%)
		20 years +				93	(2.8%)
		Life/Forensic patient				31	(0.9%)
W	Inmate security classification						
	Security level	Convicted	%	Unconvicted	%	Total	%
	Maximum	474	22.0%	413	35.0%	887	26.6%
	Medium	633	29.3%	546	46.3%	1179	35.3%
	Minimum	1022	47.4%	126	10.7%	1148	34.4%
	Unclassified	28	1.3%	95	8.1%	123	3.7%
	Total	2157	100%	1180	100%	3337	100%

Table 2.1 Demographic characteristics

	GENDER				TOTAL	
	Male		Female			
Age at Census date (years)						
18	25	0.8%	2	0.7%	27	0.8%
19	67	2.2%	2	0.7%	69	2.1%
20	74	2.4%	7	2.5%	81	2.4%
21-22	189	6.2%	24	8.5%	213	6.4%
23-24	258	8.4%	18	6.4%	276	8.3%
25-29	720	23.6%	60	21.4%	780	23.4%
30-34	550	18.0%	58	20.6%	608	18.2%
35-39	450	14.7%	63	22.4%	513	15.4%
40-44	300	9.8%	15	5.3%	315	9.4%
45-49	205	6.7%	16	5.7%	221	6.6%
50-54	95	3.1%	6	2.1%	101	3.0%
55-59	70	2.3%	8	2.8%	78	2.3%
60-64	31	1.0%	2	0.7%	33	1.0%
65 +	22	0.7%	--	--	22	0.7%
Aboriginality						
Aboriginal/Torres Strait Islander	3056	100.0%	281	100.0%	3337	100.0%
Non-Aboriginal	--	--	--	--	--	--
Unknown	--	--	--	--	--	--
Known prior imprisonment as an adult						
Known prior imprisonment	2633	86.2%	238	84.7%	2871	86.0%
- full-time custody (convicted)	2329	76.2%	185	65.8%	2514	75.3%
- full-time custody (fine only)	1	*	--	--	1	*
- full-time custody (remand)	300	9.8%	53	18.9%	353	10.6%
- periodic detention	3	0.1%	--	--	3	0.1%
No prior imprisonment	423	13.8%	43	15.3%	466	14.0%
- prior community based order	185	6.1%	18	6.4%	203	6.1%
- no prior imprisonment or community order	238	7.8%	25	8.9%	263	7.9%
Marital status at reception						
Never married	2075	67.9%	190	67.6%	2265	67.9%
Married/de-facto	864	28.3%	80	28.5%	944	28.3%
Separated	43	1.4%	4	1.4%	47	1.4%
Divorced	38	1.2%	-	-	38	1.1%
Widowed	1	*	1	0.4%	2	0.1%
Unknown	35	1.1%	6	2.1%	41	1.2%
English speaking status of country of birth						
Australian born	2893	94.7%	267	95.0%	3160	94.7%
Other English speaking	15	0.5%	-	-	15	0.4%
Non-English speaking	16	0.5%	1	0.4%	17	0.5%
Country of birth unknown	132	4.3%	13	4.6%	145	4.3%
TOTAL	3056	100.0%	281	100.0%	3337	100.0%

* Less than 0.05%

Table 2.2 Legal status characteristics

	GENDER				TOTAL	
	Male		Female			
Legal status						
Under sentence - no appeal	1920	62.8%	162	57.7%	2082	62.4%
Appellant	75	2.5%	14	5.0%	89	2.7%
Forensic patient	22	0.7%	--	--	22	0.7%
Remand/trial ¹	1039	34.0%	105	37.4%	1144	34.3%
Awaiting deportation	--	--	--	--	--	--
Awaiting extradition	--	--	--	--	--	--
Civil inmate	--	--	--	--	--	--
Type of sentence						
Not under sentence	1039	34.0%	105	37.4%	1144	34.3%
Life	8	0.3%	1	0.4%	9	0.3%
Forensic patient	22	0.7%	--	--	22	0.7%
Sentence/Non Parole	1511	49.4%	109	38.8%	1620	48.5%
Sentence/Parole declined	476	15.6%	66	23.5%	542	16.2%
Level of Court of most serious offence						
Supreme	175	5.7%	10	3.6%	185	5.5%
District	1210	39.6%	83	29.5%	1293	38.7%
Local	1206	39.5%	127	45.2%	1333	39.9%
State Parole Authority	422	13.8%	52	18.5%	474	14.2%
Drug Court	36	1.2%	9	3.2%	45	1.3%
Children's Court	7	0.2%	--	--	7	0.2%
Federal/Other	--	--	--	--	--	--
Immigration Authority	--	--	--	--	--	--
State of Court of most serious offence						
New South Wales	3054	99.9%	281	100.0%	3335	99.9%
Victoria	2	0.1%	--	--	2	0.1%
Queensland	--	--	--	--	--	--
South Australia	--	--	--	--	--	--
Western Australia	--	--	--	--	--	--
Tasmania	--	--	--	--	--	--
Northern Territory	--	--	--	--	--	--
Australian Capital Territory	--	--	--	--	--	--
Overseas	--	--	--	--	--	--
TOTAL	3056	100.0%	281	100.0%	3337	100.0%

* Less than 0.05%

1. Remand/trial includes awaiting sentence - see explanatory note (g).

Table 2.3 Characteristics of offences and sentences

	GENDER				TOTAL	
	Male		Female			
Most serious offence (MSO) ¹						
Homicide and related offences	176	5.8%	11	3.9%	187	5.6%
Murder	136	4.5%	8	2.8%	144	4.3%
Attempted murder	15	0.5%	1	0.4%	16	0.5%
Manslaughter and driving causing death	25	0.8%	2	0.7%	27	0.8%
Acts intended to cause injury	1062	34.8%	96	34.2%	1158	34.7%
Assault	957	31.3%	86	30.6%	1043	31.3%
Other acts intended to cause injury	105	3.4%	10	3.6%	115	3.4%
Sexual assault and related offences	318	10.4%	8	2.8%	326	9.8%
Sexual assault	284	9.3%	8	2.8%	292	8.8%
Non-assaultive sexual offences	34	1.1%	--	--	34	1.0%
Dangerous or negligent acts endang. persons	96	3.1%	10	3.6%	106	3.2%
Dangerous or negligent operation of vehicle	96	3.1%	10	3.6%	106	3.2%
Other dangerous or negligent acts	--	--	--	--	--	--
Abduction, harassment and other offences	54	1.8%	8	2.8%	62	1.9%
Abduction and kidnapping	42	1.4%	7	2.5%	49	1.5%
Deprivation of liberty / false imprisonment	1	*	--	--	1	*
Harassment and threatening behaviour	11	0.4%	1	0.4%	12	0.4%
Robbery, extortion and related offences	246	8.0%	14	5.0%	260	7.8%
Robbery	244	8.0%	13	4.6%	257	7.7%
Blackmail and extortion	2	0.1%	1	0.4%	3	0.1%
Unlawful entry with intent/burglary, B&E	250	8.2%	19	6.8%	269	8.1%
Theft and related offences	59	1.9%	17	6.0%	76	2.3%
Motor vehicle theft and related offences	18	0.6%	3	1.1%	21	0.6%
Theft (except motor vehicles)	33	1.1%	12	4.3%	45	1.3%
Receive or handle proceeds of crime	8	0.3%	2	0.7%	10	0.3%
Fraud, deception and related offences	34	1.1%	16	5.7%	50	1.5%
Obtain benefit by deception	32	1.0%	16	5.7%	48	1.4%
Forgery and counterfeiting	--	--	--	--	--	--
Deceptive business/government practices	--	--	--	--	--	--
Other fraud and deception offences	2	0.1%	--	--	2	0.1%
Illicit drug offences	161	5.3%	20	7.1%	181	5.4%
Import or export illicit drugs	5	0.2%	--	--	5	0.1%
Deal or traffic in illicit drugs	143	4.7%	20	7.1%	163	4.9%
Manufacture or cultivate illicit drugs	8	0.3%	--	--	8	0.2%
Possess and/or use illicit drugs	5	0.2%	--	--	5	0.1%
Other illicit drug offences	--	--	--	--	--	--
Prohibited and regulated weapons etc.	62	2.0%	2	0.7%	64	1.9%
Prohibited weapons/explosives	34	1.1%	2	0.7%	36	1.1%
Regulated weapons/explosives	28	0.9%	--	--	28	0.8%
Property damage and environmental pollution	27	0.9%	1	0.4%	28	0.8%
Public order offences	15	0.5%	1	0.4%	16	0.5%
Disorderly conduct	11	0.4%	1	0.4%	12	0.4%
Regulated public order offences	--	--	--	--	--	--
Offensive conduct	4	0.1%	--	--	4	0.1%
Traffic and vehicle regulatory offences	17	0.6%	3	1.1%	20	0.6%
Driving licence offences	8	0.3%	2	0.7%	10	0.3%
Road vehicle registration and roadworthiness	--	--	--	--	--	--
Regulatory driving offences	9	0.3%	1	0.4%	10	0.3%
Pedestrian offences	--	--	--	--	--	--
Offences against justice procedures etc.	474	15.5%	55	19.6%	529	15.9%
Breach of custodial order offences	3	0.1%	--	--	3	0.1%
Breach of community-based orders	438	14.3%	53	18.9%	491	14.7%
Breach of violence and non-violence orders	17	0.6%	1	0.4%	18	0.5%
Offences against government operations	--	--	--	--	--	--
Offences against government security	3	0.1%	--	--	3	0.1%
Offences against justice procedures	13	0.4%	1	0.4%	14	0.4%
Miscellaneous offences	5	0.2%	--	--	5	0.1%
TOTAL	3056	100.0%	281	100.0%	3337	100.0%

* Less than 0.05%

1. Offences classified under Australian and New Zealand Standard Offence Classification 2011 - see explanatory note (j).

Table 2.3 Characteristics of offences and sentences (continued)

	GENDER				TOTAL	
	Male		Female			
Length of aggregate sentence						
Not under sentence	1039	34.0%	105	37.4%	1144	34.3%
1 - 7 days	--	--	--	--	--	--
8 - < 1 month	3	0.1%	--	--	3	0.1%
1 month - < 3 months	31	1.0%	12	4.3%	43	1.3%
3 months - < 6 months	103	3.4%	19	6.8%	122	3.7%
6 months - < 9 months	116	3.8%	16	5.7%	132	4.0%
9 months - < 1 year	108	3.5%	18	6.4%	126	3.8%
1 - < 2 years	492	16.1%	48	17.1%	540	16.2%
2 - < 5 years	540	17.7%	40	14.2%	580	17.4%
5 - < 7 years	187	6.1%	9	3.2%	196	5.9%
7 - < 10 years	173	5.7%	5	1.8%	178	5.3%
10 - < 15 years	98	3.2%	3	1.1%	101	3.0%
15 - < 20 years	47	1.5%	1	0.4%	48	1.4%
20 years +	89	2.9%	4	1.4%	93	2.8%
Life	8	0.3%	1	0.4%	9	0.3%
Forensic patient	22	0.7%	--	--	22	0.7%
Indeterminate sentences - Life sentence and Forensic patients						
Not Life or Forensic/correctional patient	3026	99.0%	280	99.6%	3306	99.1%
Life 'Natural Life'	8	0.3%	1	0.4%	9	0.3%
Life - yet to be redetermined	--	--	--	--	--	--
Life / Non Parole period	--	--	--	--	--	--
Life - Breach of parole/licence	--	--	--	--	--	--
Life (ACT)	--	--	--	--	--	--
Life (Federal)	--	--	--	--	--	--
Life (Overseas)	--	--	--	--	--	--
Forensic patient - Indeterminate term	15	0.5%	--	--	15	0.4%
Forensic patient - Limiting term	2	0.1%	--	--	2	0.1%
Correctional patient ¹ - under sentence	5	0.2%	--	--	5	0.1%
Correctional patient ¹ - unsentenced	--	--	--	--	--	--
Is any offence a federal offence ?						
Yes	95	3.1%	5	1.8%	100	3.0%
No	2961	96.9%	276	98.2%	3237	97.0%
Is the most serious offence a federal offence ?						
Yes	78	2.6%	5	1.8%	83	2.5%
No	2978	97.4%	276	98.2%	3254	97.5%
TOTAL	3056	100.0%	281	100.0%	3337	100.0%

* less than 0.05%.

1. See explanatory note (h).

Table 2.3 Characteristics of offences and sentences (continued)

	GENDER				TOTAL	
	Male		Female			
Is the inmate serving a term for breach of parole, licence or escape ?						
Not breach of parole/licence or escapee	2210	72.3%	230	81.9%	2440	73.1%
Breach of parole	835	27.3%	51	18.1%	886	26.6%
Breach of licence	--	--	--	--	--	--
Escape	7	0.2%	--	--	7	0.2%
Breach of parole and escape	4	0.1%	--	--	4	0.1%
Are there any other offences for inmates whose MSO is breach of parole/licence ?						
MSO not breach of parole/licence	3047	99.7%	279	99.3%	3326	99.7%
No other offence (excludes fines)	1	*	--	--	1	*
Remand for other offence(s)	8	0.3%	1	0.4%	9	0.3%
Convicted for other offence(s)	--	--	1	0.4%	1	*
Is the inmate in full-time custody having breached an order (other than parole/licence)?						
In full-time - no breach	2821	92.3%	240	85.4%	3061	91.7%
Sentenced - breach of periodic detention	--	--	--	--	--	--
Sentenced - breach of home detention	--	--	--	--	--	--
Sentenced - breach of intensive correction order	235	7.7%	41	14.6%	276	8.3%
Remanded - breach of periodic detention	--	--	--	--	--	--
Remanded - breach of home detention	--	--	--	--	--	--
Remanded - breach of intensive correction order	--	--	--	--	--	--
Time to serve to earliest date of release (EDR)						
Unsentenced	1039	34.0%	105	37.4%	1144	34.3%
Earliest date of release lapsed	67	2.2%	2	0.7%	69	2.1%
< 3 months	532	17.4%	78	27.8%	610	18.3%
3 - < 6 months	402	13.2%	41	14.6%	443	13.3%
6 - < 12 months	384	12.6%	28	10.0%	412	12.3%
1 - < 2 years	313	10.2%	14	5.0%	327	9.8%
2 - < 5 years	176	5.8%	7	2.5%	183	5.5%
5 years +	113	3.7%	5	1.8%	118	3.5%
Indeterminate (Life/forensic patient) ¹	30	1.0%	1	0.4%	31	0.9%
TOTAL	3056	100.0%	281	100.0%	3337	100.0%

1. Includes all inmates with a type of sentence of Life or Forensic patient regardless of whether an earliest date of release exists for that inmate.

Table 2.4 Inmate security classification

	GENDER				TOTAL	
	Male		Female			
Security classification of inmate¹						
Maximum security classification						
Maximum security - Convicted	467	15.3%	7	2.5%	474	14.2%
Life	7	0.2%	1	0.4%	8	0.2%
AA	--	--	--	--	--	--
A1	4	0.1%	--	--	4	0.1%
A2	370	12.1%	--	--	370	11.1%
E1	86	2.8%	6	2.1%	92	2.8%
Category 5 (Female)	--	--	--	--	--	--
Maximum security - Unconvicted	410	13.4%	3	1.1%	413	12.4%
Unconvicted AA	2	0.1%	--	--	2	0.1%
Unconvicted A1	--	--	--	--	--	--
Unconvicted A2	370	12.1%	--	--	370	11.1%
Unconvicted E1	38	1.2%	3	1.1%	41	1.2%
Unconvicted Category 5 (Female)	--	--	--	--	--	--
Sub-total Maximum security	877	28.7%	10	3.6%	887	26.6%
Medium security classification						
Medium security - Convicted	610	20.0%	23	8.2%	633	19.0%
B	479	15.7%	--	--	479	14.4%
E2	131	4.3%	--	--	131	3.9%
Category 4 (Female)	--	--	23	8.2%	23	0.7%
Medium security - Unconvicted	522	17.1%	24	8.5%	546	16.4%
Unconvicted B	449	14.7%	--	--	449	13.5%
Unconvicted E2	73	2.4%	3	1.1%	76	2.3%
Unconvicted Category 4 (Female)	--	--	21	7.5%	21	0.6%
Sub-total Medium security	1132	37.0%	47	16.7%	1179	35.3%
Minimum security classification						
Minimum security - Convicted	881	28.8%	141	50.2%	1022	30.6%
C1	327	10.7%	--	--	327	9.8%
C2	516	16.9%	--	--	516	15.5%
C3	28	0.9%	--	--	28	0.8%
Compulsory Drug Treatment Centre	10	0.3%	--	--	10	0.3%
Category 3 (Female)	--	--	47	16.7%	47	1.4%
Category 2 (Female)	--	--	90	32.0%	90	2.7%
Category 1 (Female)	--	--	4	1.4%	4	0.1%
Minimum security - Unconvicted	66	2.2%	60	21.4%	126	3.8%
Unconvicted C1	66	2.2%	--	--	66	2.0%
Unconvicted Category 3 (Female)	--	--	35	12.5%	35	1.0%
Unconvicted Category 2 (Female)	--	--	25	8.9%	25	0.7%
Sub-total Minimum	947	31.0%	201	71.5%	1148	34.4%
Unclassified						
Unclassified - convicted	24	0.8%	4	1.4%	28	0.8%
Unclassified - unconvicted	76	2.5%	19	6.8%	95	2.8%
Sub-total Unclassified	100	3.3%	23	8.2%	123	3.7%
TOTAL	3056	100.0%	281	100.0%	3337	100.0%

1. Some convicted inmates may have an "unconvicted" inmate classification if they were facing further and more serious charges or had not been re-classified at the time of the census. Therefore the total number of inmates with "convicted" inmate classifications may not be equal to the total number of convicted inmates.

* less than 0.05%.

Table 2.5 Location and correctional centre security classification

	GENDER				TOTAL	
	Male		Female			
Correctional centre by security rating						
Maximum security						
Goulburn (Maximum)	115	3.8%	--	--	115	3.4%
High Risk Management	25	0.8%	--	--	25	0.7%
Hunter	53	1.7%	--	--	53	1.6%
Junee (Maximum)	32	1.0%	4	1.4%	36	1.1%
Lithgow	111	3.6%	--	--	111	3.3%
Long Bay Hospital	86	2.8%	--	--	86	2.6%
Macquarie	43	1.4%	--	--	43	1.3%
Mary Wade	--	--	13	4.6%	13	0.4%
Metropolitan Remand and Reception	168	5.5%	--	--	168	5.0%
Metro. Special Programs (Maximum)	140	4.6%	--	--	140	4.2%
Mid-North Coast (Maximum)	239	7.8%	--	--	239	7.2%
Parklea (Maximum)	262	8.6%	--	--	262	7.9%
Shortland	199	6.5%	--	--	199	6.0%
Silverwater Women's	--	--	92	32.7%	92	2.8%
South Coast (Maximum)	121	4.0%	--	--	121	3.6%
Special Purpose Centre (Maximum)	3	0.1%	--	--	3	0.1%
Wellington (Maximum)	220	7.2%	--	--	220	6.6%
Sub-total Maximum security	1817	59.5%	109	38.8%	1926	57.7%
Medium security						
Bathurst (Medium)	132	4.3%	1	0.4%	133	4.0%
Broken Hill (Medium)	25	0.8%	--	--	25	0.7%
Cooma	23	0.8%	--	--	23	0.7%
Dillwynia (Medium)	--	--	68	24.2%	68	2.0%
Grafton (Medium)	23	0.8%	--	--	23	0.7%
John Morony (Medium)	118	3.9%	--	--	118	3.5%
Junee (Medium)	177	5.8%	--	--	177	5.3%
Mid-North Coast (Medium)	--	--	29	10.3%	29	0.9%
South Coast (Medium)	39	1.3%	--	--	39	1.2%
Tamworth (Medium)	22	0.7%	--	--	22	0.7%
Sub-total Medium security	559	18.3%	98	34.9%	657	19.7%
Minimum security						
Bathurst (Minimum)	25	0.8%	--	--	25	0.7%
Broken Hill (Minimum)	11	0.4%	--	--	11	0.3%
Cessnock (Minimum)	142	4.6%	--	--	142	4.3%
Compulsory Drug Treatment	9	0.3%	--	--	9	0.3%
Cooma	6	0.2%	--	--	6	0.2%
Dawn de Loas	93	3.0%	--	--	93	2.8%
Dillwynia (Minimum)	--	--	--	--	--	--
Emu Plains	--	--	36	12.8%	36	1.1%
Geoffrey Pearce	28	0.9%	--	--	28	0.8%
Glen Innes	17	0.6%	--	--	17	0.5%
Goulburn (Minimum)	16	0.5%	--	--	16	0.5%
Grafton (Minimum)	--	--	3	1.1%	3	0.1%
Junee (Minimum)	30	1.0%	--	--	30	0.9%
Kirkconnell	42	1.4%	--	--	42	1.3%
Mannus	18	0.6%	--	--	18	0.5%
Metro. Special Programs (Minimum)	53	1.7%	--	--	53	1.6%
Mid-North Coast (Minimum)	32	1.0%	--	--	32	1.0%
Oberon	14	0.5%	--	--	14	0.4%
Parklea (Minimum)	4	0.1%	--	--	4	0.1%
South Coast (Minimum)	43	1.4%	--	--	43	1.3%
St. Heliers	39	1.3%	--	--	39	1.2%
Tamworth (Minimum)	10	0.3%	--	--	10	0.3%
Wellington (Minimum)	32	1.0%	26	9.3%	58	1.7%
Sub-total Minimum security	664	21.7%	65	23.1%	729	21.8%
Sub-total Correctional Centres	3040	99.5%	272	96.8%	3312	99.3%

Table 2.5 Location and correctional centre security classification (continued)

	GENDER				TOTAL	
	Male		Female			
Transitional Centres						
Bolwara House Transitional Centres	--	--	5	1.8%	5	0.1%
Parramatta Transitional Centre	--	--	--	--	--	--
Sub-total Transitional Centres	--	--	5	1.8%	5	0.1%
Court/Police Cell Complexes						
Albury	--	--	--	--	--	--
Amber Laurel	4	0.1%	1	0.4%	5	0.1%
Batemans Bay	--	--	--	--	--	--
Dubbo	--	--	--	--	--	--
Kariong	2	0.1%	--	--	2	0.1%
Lismore	2	0.1%	--	--	2	0.1%
Moree	--	--	--	--	--	--
Newcastle	2	0.1%	--	--	2	0.1%
Parramatta	--	--	--	--	--	--
Penrith	--	--	--	--	--	--
Port Macquarie	2	0.1%	--	--	2	0.1%
Queanbeyan	--	--	--	--	--	--
Surry Hills (Sydney)	3	0.1%	3	1.1%	6	0.2%
Wagga Wagga	--	--	--	--	--	--
Wollongong	1	*	--	--	1	*
Sub-total Court/Police Cell Complexes	16	0.5%	4	1.4%	20	0.6%
TOTAL	3056	100.0%	281	100.0%	3337	100.0%

* less than 0.05%

Table 2.6 Country of birth - Indigenous inmates

Country of birth	GENDER				TOTAL	
	Male		Female			
OCEANIA AND ANTARCTICA						
AUSTRALIA (incl. ext. territories)	2893	94.7%	267	95.0%	3160	94.7%
- New South Wales	2119	69.3%	174	61.9%	2293	68.7%
- Victoria	12	0.4%	8	2.8%	20	0.6%
- Queensland	109	3.6%	12	4.3%	121	3.6%
- South Australia	7	0.2%	--	--	7	0.2%
- Western Australia	13	0.4%	1	0.4%	14	0.4%
- Tasmania	4	0.1%	--	--	4	0.1%
- Northern Territory	4	0.1%	1	0.4%	5	0.1%
- Australian Capital Territory	18	0.6%	2	0.7%	20	0.6%
- Australian External Territories	--	--	--	--	--	--
- Australia (not further defined)	607	19.9%	69	24.6%	676	20.3%
- Norfolk Island	--	--	--	--	--	--
NEW ZEALAND	11	0.4%	--	--	11	0.3%
MELANESIA	1	*	1	0.4%	2	0.1%
- New Caledonia	--	--	--	--	--	--
- Papua New Guinea	--	--	1	0.4%	1	*
- Solomon Islands	1	*	--	--	1	*
- Vanuatu	--	--	--	--	--	--
MICRONESIA	--	--	--	--	--	--
- Kiribati	--	--	--	--	--	--
POLYNESIA (excl. Hawaii)	6	0.2%	--	--	6	0.2%
- Cook Islands	1	*	--	--	1	*
- Fiji	2	0.1%	--	--	2	0.1%
- Niue	--	--	--	--	--	--
- Samoa	2	0.1%	--	--	2	0.1%
- Samoa American	--	--	--	--	--	--
- Tonga	1	*	--	--	1	*
- Tuvalu	--	--	--	--	--	--
Sub-total						
OCEANIA AND ANTARCTICA	2911	95.3%	268	95.4%	3179	95.3%
NORTH-WEST EUROPE	1	*	--	--	1	*
SOUTHERN AND EASTERN EUROPE	1	*	--	--	1	*
NORTH AFRICA AND THE MIDDLE EAST	5	0.2%	--	--	5	0.1%
SOUTHEAST ASIA	--	--	--	--	--	--
NORTH-EAST ASIA	2	0.1%	--	--	2	0.1%
SOUTHERN & CENTRAL ASIA	--	--	--	--	--	--
AMERICAS	2	0.1%	--	--	2	0.1%
SUB-SAHARAN AFRICA	2	0.1%	--	--	2	0.1%
UNKNOWN	132	4.3%	13	4.6%	145	4.3%
TOTAL	3056	100.0%	281	100.0%	3337	100.0%

* Less than 0.05%

Table 2.7 Statistical area of last known address

Statistical area (Level 4)	GENDER				TOTAL	
	Male		Female			
New South Wales						
Capital Region	82	2.7%	12	4.3%	94	2.8%
Central Coast	124	4.1%	17	6.0%	141	4.2%
Central West	182	6.0%	11	3.9%	193	5.8%
Coffs Harbour - Grafton	90	2.9%	5	1.8%	95	2.8%
Far West and Orana	294	9.6%	21	7.5%	315	9.4%
Hunter Valley exc Newcastle	120	3.9%	11	3.9%	131	3.9%
Illawarra	132	4.3%	11	3.9%	143	4.3%
Mid North Coast	169	5.5%	14	5.0%	183	5.5%
Murray	59	1.9%	3	1.1%	62	1.9%
New England and North West	265	8.7%	25	8.9%	290	8.7%
Newcastle and Lake Macquarie	166	5.4%	14	5.0%	180	5.4%
Richmond - Tweed	111	3.6%	3	1.1%	114	3.4%
Riverina	139	4.5%	9	3.2%	148	4.4%
Southern Highlands and Shoalhaven	72	2.4%	7	2.5%	79	2.4%
Sydney - Baulkham Hills and Hawkesbury	6	0.2%	--	--	6	0.2%
Sydney - Blacktown	203	6.6%	21	7.5%	224	6.7%
Sydney - City and Inner South	180	5.9%	30	10.7%	210	6.3%
Sydney - Eastern Suburbs	66	2.2%	7	2.5%	73	2.2%
Sydney - Inner South West	54	1.8%	8	2.8%	62	1.9%
Sydney - Inner West	35	1.1%	3	1.1%	38	1.1%
Sydney - North Sydney and Hornsby	5	0.2%	--	--	5	0.1%
Sydney - Northern Beaches	13	0.4%	1	0.4%	14	0.4%
Sydney - Outer South West	105	3.4%	6	2.1%	111	3.3%
Sydney - Outer West and Blue Mountains	133	4.4%	9	3.2%	142	4.3%
Sydney - Parramatta	109	3.6%	14	5.0%	123	3.7%
Sydney - Ryde	5	0.2%	--	--	5	0.1%
Sydney - South West	78	2.6%	11	3.9%	89	2.7%
Sydney - Sutherland	17	0.6%	1	0.4%	18	0.5%
Sub-total New South Wales	3014	98.6%	274	97.5%	3288	98.5%
Victoria	9	0.3%	1	0.4%	10	0.3%
Queensland	14	0.5%	4	1.4%	18	0.5%
South Australia	1	*	--	--	1	*
Western Australia	--	--	--	--	--	--
Tasmania	1	*	--	--	1	*
Northern Territory	--	--	--	--	--	--
Australian Capital Territory	4	0.1%	--	--	4	0.1%
Sub-total other states/territories	29	0.9%	5	1.8%	34	1.0%
No fixed abode	1	*	--	--	1	*
Overseas	--	--	--	--	--	--
Unknown	12	0.4%	2	0.7%	14	0.4%
TOTAL	3056	100.0%	281	100.0%	3337	100.0%

Section 3

MOST SERIOUS OFFENCE

- Aggregate sentence
(Sentenced inmates)

and

Time in custody
(Unsentenced inmates)

Table 3.1.1 Most serious offence by aggregate sentence imposed - Sentenced male inmates in full-time custody

Most serious offence ¹	Aggregate sentence														TOTAL
	< 1 mth	1-<3 mths	3-<6 mths	6-<9 mths	9-<12 mths	1-<2 years	2-< 5 years	5-<7 years	7-< 10 years	10-<15 years	15-<20 years	20 + years	Life Forensic Patient		
Homicide and related	--	--	--	--	--	--	32	24	37	63	104	345	67	30	702
Acts intended to cause injury	--	1	11	26	59	522	519	158	138	72	10	5	--	28	1549
Sexual assault and related	--	--	--	1	2	71	282	252	295	347	152	119	1	15	1537
Dangerous or negligent acts endang. persons	--	1	--	3	7	84	90	12	9	1	--	--	--	--	207
Abduction, harassment etc.	--	--	--	3	1	16	27	29	25	17	3	2	--	3	126
Robbery, extortion etc.	--	--	--	--	--	6	202	120	84	43	15	4	--	2	476
Unlawful entry with intent/burglary, B&E	--	--	1	3	9	134	250	77	35	11	1	1	--	3	525
Theft and related	--	2	7	12	16	93	40	6	3	1	--	--	--	--	180
Fraud, deception and related	--	--	3	1	10	47	69	19	8	6	1	--	--	1	165
Illicit drug offences	--	--	--	2	4	64	249	171	251	212	62	54	10	1	1080
Weapons and explosives	--	--	--	3	4	22	79	27	15	4	3	--	--	--	157
Property damage and environmental pollution	--	1	2	3	4	12	23	7	5	1	1	--	--	3	62
Public order offences	--	1	2	3	5	20	7	--	--	--	--	--	--	1	39
Traffic and vehicle regulatory offences	--	--	5	12	22	32	5	--	--	--	--	--	--	--	76
Offences against justice procedures etc.	5	76	217	212	182	338	101	4	8	3	5	14	1	6	1172
Miscellaneous offences	--	--	--	--	--	3	5	--	--	1	1	4	2	2	18
TOTAL	5	82	248	284	325	1464	1980	906	913	782	358	548	81	95	8071

1. Offences classified under Australian and New Zealand Standard Offence Classification (2011) - see explanatory note (j).

Table 3.1.2 Most serious offence by aggregate sentence imposed - Sentenced female inmates in full-time custody

Most serious offence ¹	Aggregate sentence														TOTAL
	< 1 mth	1-<3 mths	3-<6 mths	6-<9 mths	9-<12 mths	1-<2 years	2-< 5 years	5-<7 years	7-< 10 years	10-<15 years	15-<20 years	20 + years	Life	Forensic Patient	
Homicide and related	--	--	--	--	--	--	6	3	9	5	6	27	2	--	58
Acts intended to cause injury	--	3	3	3	1	28	29	7	8	1	1	--	--	1	85
Sexual assault and related	--	--	--	--	--	--	5	2	4	2	5	2	--	1	21
Dangerous or negligent acts endang. persons	--	--	1	--	1	5	5	2	--	--	--	--	--	--	14
Abduction, harassment etc.	--	1	--	1	--	--	8	4	1	--	1	--	--	--	16
Robbery, extortion etc.	--	--	--	--	--	2	13	1	2	1	--	--	--	--	19
Unlawful entry with intent/burglary, B&E	--	--	--	1	--	13	10	2	--	--	--	--	--	--	26
Theft and related	--	--	1	3	1	15	5	2	--	--	--	--	--	--	27
Fraud, deception and related	--	1	2	--	2	13	14	9	3	1	--	--	--	--	45
Illicit drug offences	--	--	--	1	3	7	26	15	16	7	2	1	1	--	79
Weapons and explosives	--	--	--	--	1	1	1	1	--	--	--	--	--	--	4
Property damage and environmental pollution	--	--	1	--	--	1	3	2	--	--	--	--	--	--	7
Public order offences	--	--	--	--	--	--	1	--	1	--	--	--	--	--	2
Traffic and vehicle regulatory offences	--	--	--	--	3	1	--	--	--	--	--	--	--	--	4
Offences against justice procedures etc.	--	17	30	20	22	19	6	--	--	--	--	--	--	1	115
Miscellaneous offences	--	--	--	--	--	1	--	--	--	--	--	--	--	--	1
TOTAL	--	22	38	29	34	106	132	50	44	17	15	30	3	3	523

1. Offences classified under Australian and New Zealand Standard Offence Classification (2011) - see explanatory note (j).

Table 3.1.3 Most serious offence by aggregate sentence imposed - All sentenced inmates in full-time custody

Most serious offence ¹	Aggregate sentence														TOTAL
	< 1 mth	1-<3 mths	3-<6 mths	6-<9 mths	9-<12 mths	1-<2 years	2-< 5 years	5-<7 years	7-< 10 years	10-<15 years	15-<20 years	20 + years	Life	Forensic Patient	
Homicide and related	--	--	--	--	--	--	38	27	46	68	110	372	69	30	760
Acts intended to cause injury	--	4	14	29	60	550	548	165	146	73	11	5	--	29	1634
Sexual assault and related	--	--	--	1	2	71	287	254	299	349	157	121	1	16	1558
Dangerous or negligent acts endang. persons	--	1	1	3	8	89	95	14	9	1	--	--	--	--	221
Abduction, harassment etc.	--	1	--	4	1	16	35	33	26	17	4	2	--	3	142
Robbery, extortion etc.	--	--	--	--	--	8	215	121	86	44	15	4	--	2	495
Unlawful entry with intent/burglary, B&E	--	--	1	4	9	147	260	79	35	11	1	1	--	3	551
Theft and related	--	2	8	15	17	108	45	8	3	1	--	--	--	--	207
Fraud, deception and related	--	1	5	1	12	60	83	28	11	7	1	--	--	1	210
Illicit drug offences	--	--	--	3	7	71	275	186	267	219	64	55	11	1	1159
Weapons and explosives	--	--	--	3	5	23	80	28	15	4	3	--	--	--	161
Property damage and environmental pollution	--	1	3	3	4	13	26	9	5	1	1	--	--	3	69
Public order offences	--	1	2	3	5	20	8	--	1	--	--	--	--	1	41
Traffic and vehicle regulatory offences	--	--	5	12	25	33	5	--	--	--	--	--	--	--	80
Offences against justice procedures etc.	5	93	247	232	204	357	107	4	8	3	5	14	1	7	1287
Miscellaneous offences	--	--	--	--	--	4	5	--	--	1	1	4	2	2	19
TOTAL	5	104	286	313	359	1570	2112	956	957	799	373	578	84	98	8594

1. Offences classified under Australian and New Zealand Standard Offence Classification (2011) - see explanatory note (j).

Table 3.2.1 Most serious offence by aggregate sentence imposed - Sentenced male inmates in full-time custody (percentage)

Most serious offence ¹	Aggregate sentence														TOTAL
	< 1 mth	1-<3 mths	3-<6 mths	6-<9 mths	9-<12 mths	1-<2 years	2-< 5 years	5-<7 years	7-< 10 years	10-<15 years	15-<20 years	20 + years	Life	Forensic Patient	
Homicide and related	--	--	--	--	--	--	1.6	2.6	4.1	8.1	29.1	63.0	82.7	31.6	8.7
Acts intended to cause injury	--	1.2	4.4	9.2	18.2	35.7	26.2	17.4	15.1	9.2	2.8	0.9	--	29.5	19.2
Sexual assault and related	--	--	--	0.4	0.6	4.8	14.2	27.8	32.3	44.4	42.5	21.7	1.2	15.8	19.0
Dangerous or negligent acts endang. persons	--	1.2	--	1.1	2.2	5.7	4.5	1.3	1.0	0.1	--	--	--	--	2.6
Abduction, harassment etc.	--	--	--	1.1	0.3	1.1	1.4	3.2	2.7	2.2	0.8	0.4	--	3.2	1.6
Robbery, extortion etc.	--	--	--	--	--	0.4	10.2	13.2	9.2	5.5	4.2	0.7	--	2.1	5.9
Unlawful entry with intent/burglary, B&E	--	--	0.4	1.1	2.8	9.2	12.6	8.5	3.8	1.4	0.3	0.2	--	3.2	6.5
Theft and related	--	2.4	2.8	4.2	4.9	6.4	2.0	0.7	0.3	0.1	--	--	--	--	2.2
Fraud, deception and related	--	--	1.2	0.4	3.1	3.2	3.5	2.1	0.9	0.8	0.3	--	--	1.1	2.0
Illicit drug offences	--	--	--	0.7	1.2	4.4	12.6	18.9	27.5	27.1	17.3	9.9	12.3	1.1	13.4
Weapons and explosives	--	--	--	1.1	1.2	1.5	4.0	3.0	1.6	0.5	0.8	--	--	--	1.9
Property damage and environmental pollution	--	1.2	0.8	1.1	1.2	0.8	1.2	0.8	0.5	0.1	0.3	--	--	3.2	0.8
Public order offences	--	1.2	0.8	1.1	1.5	1.4	0.4	--	--	--	--	--	--	1.1	0.5
Traffic and vehicle regulatory offences	--	--	2.0	4.2	6.8	2.2	0.3	--	--	--	--	--	--	--	0.9
Offences against justice procedures etc.	100.0	92.7	87.5	74.6	56.0	23.1	5.1	0.4	0.9	0.4	1.4	2.6	1.2	6.3	14.5
Miscellaneous offences	--	--	--	--	--	0.2	0.3	--	--	0.1	0.3	0.7	2.5	2.1	0.2
TOTAL	100	100	100	100	100	100	100	100	100	100	100	100	100	100	100

1. Offences classified under Australian and New Zealand Standard Offence Classification (2011) - see explanatory note (j).

Table 3.2.2 Most serious offence by aggregate sentence imposed - Sentenced female inmates in full-time custody (percentage)

Most serious offence ¹	Aggregate sentence														TOTAL
	< 1 mth	1-<3 mths	3-<6 mths	6-<9 mths	9-<12 mths	1-<2 years	2-< 5 years	5-<7 years	7-< 10 years	10-<15 years	15-<20 years	20 + years	Life	Forensic Patient	
Homicide and related	--	--	--	--	--	--	4.5	6.0	20.5	29.4	40.0	90.0	66.7	--	11.1
Acts intended to cause injury	--	13.6	7.9	10.3	2.9	26.4	22.0	14.0	18.2	5.9	6.7	--	--	33.3	16.3
Sexual assault and related	--	--	--	--	--	--	3.8	4.0	9.1	11.8	33.3	6.7	--	33.3	4.0
Dangerous or negligent acts endang. persons	--	--	2.6	--	2.9	4.7	3.8	4.0	--	--	--	--	--	--	2.7
Abduction, harassment etc.	--	4.5	--	3.4	--	--	6.1	8.0	2.3	--	6.7	--	--	--	3.1
Robbery, extortion etc.	--	--	--	--	--	1.9	9.8	2.0	4.5	5.9	--	--	--	--	3.6
Unlawful entry with intent/burglary, B&E	--	--	--	3.4	--	12.3	7.6	4.0	--	--	--	--	--	--	5.0
Theft and related	--	--	2.6	10.3	2.9	14.2	3.8	4.0	--	--	--	--	--	--	5.2
Fraud, deception and related	--	4.5	5.3	--	5.9	12.3	10.6	18.0	6.8	5.9	--	--	--	--	8.6
Illicit drug offences	--	--	--	3.4	8.8	6.6	19.7	30.0	36.4	41.2	13.3	3.3	33.3	--	15.1
Weapons and explosives	--	--	--	--	2.9	0.9	0.8	2.0	--	--	--	--	--	--	0.8
Property damage and environmental pollution	--	--	2.6	--	--	0.9	2.3	4.0	--	--	--	--	--	--	1.3
Public order offences	--	--	--	--	--	--	0.8	--	2.3	--	--	--	--	--	0.4
Traffic and vehicle regulatory offences	--	--	--	--	8.8	0.9	--	--	--	--	--	--	--	--	0.8
Offences against justice procedures etc.	--	77.3	78.9	69.0	64.7	17.9	4.5	--	--	--	--	--	--	33.3	22.0
Miscellaneous offences	--	--	--	--	--	0.9	--	--	--	--	--	--	--	--	0.2
TOTAL	--	100	100	100	100	100	100	100	100	100	100	100	100	100	100

1. Offences classified under Australian and New Zealand Standard Offence Classification (2011) - see explanatory note (j).

Table 3.2.3**Most serious offence by aggregate sentence imposed -
All sentenced inmates in full-time custody (percentage)**

Most serious offence ¹	Aggregate sentence														TOTAL
	< 1 mth	1-<3 mths	3-<6 mths	6-<9 mths	9-<12 mths	1-<2 years	2-< 5 years	5-<7 years	7-< 10 years	10-<15 years	15-<20 years	20 + years	Life	Forensic Patient	
Homicide and related	--	--	--	--	--	--	1.8	2.8	4.8	8.5	29.5	64.4	82.1	30.6	8.8
Acts intended to cause injury	--	3.8	4.9	9.3	16.7	35.0	25.9	17.3	15.3	9.1	2.9	0.9	--	29.6	19.0
Sexual assault and related	--	--	--	0.3	0.6	4.5	13.6	26.6	31.2	43.7	42.1	20.9	1.2	16.3	18.1
Dangerous or negligent acts endang. persons	--	1.0	0.3	1.0	2.2	5.7	4.5	1.5	0.9	0.1	--	--	--	--	2.6
Abduction, harassment etc.	--	1.0	--	1.3	0.3	1.0	1.7	3.5	2.7	2.1	1.1	0.3	--	3.1	1.7
Robbery, extortion etc.	--	--	--	--	--	0.5	10.2	12.7	9.0	5.5	4.0	0.7	--	2.0	5.8
Unlawful entry with intent/burglary, B&E	--	--	0.3	1.3	2.5	9.4	12.3	8.3	3.7	1.4	0.3	0.2	--	3.1	6.4
Theft and related	--	1.9	2.8	4.8	4.7	6.9	2.1	0.8	0.3	0.1	--	--	--	--	2.4
Fraud, deception and related	--	1.0	1.7	0.3	3.3	3.8	3.9	2.9	1.1	0.9	0.3	--	--	1.0	2.4
Illicit drug offences	--	--	--	1.0	1.9	4.5	13.0	19.5	27.9	27.4	17.2	9.5	13.1	1.0	13.5
Weapons and explosives	--	--	--	1.0	1.4	1.5	3.8	2.9	1.6	0.5	0.8	--	--	--	1.9
Property damage and environmental pollution	--	1.0	1.0	1.0	1.1	0.8	1.2	0.9	0.5	0.1	0.3	--	--	3.1	0.8
Public order offences	--	1.0	0.7	1.0	1.4	1.3	0.4	--	0.1	--	--	--	--	1.0	0.5
Traffic and vehicle regulatory offences	--	--	1.7	3.8	7.0	2.1	0.2	--	--	--	--	--	--	--	0.9
Offences against justice procedures etc.	100.0	89.4	86.4	74.1	56.8	22.7	5.1	0.4	0.8	0.4	1.3	2.4	1.2	7.1	15.0
Miscellaneous offences	--	--	--	--	--	0.3	0.2	--	--	0.1	0.3	0.7	2.4	2.0	0.2
TOTAL	100	100	100	100	100	100	100	100	100	100	100	100	100	100	100

1. Offences classified under Australian and New Zealand Standard Offence Classification (2011) - see explanatory note (j).

**Table 3.3.1 Most serious offence by time in custody -
Unsentenced male inmates in full-time custody**

Most serious offence ²	Time in custody ¹														TOTAL	
	< 1 month		1 - < 3 months		3 - < 6 months		6 - < 9 months		9 - < 12 months		1 - < 2 years		2+ years			
	No.	%	No.	%	No.	%	No.	%	No.	%	No.	%	No.	%	No.	%
Homicide and related	12	1.4	16	1.8	26	3.9	31	6.5	22	7.2	67	13.8	31	26.5	205	5.4
Acts intended to cause injury	391	44.7	364	40.7	267	39.7	152	31.9	64	21.1	110	22.6	12	10.3	1360	35.6
Sexual assault and related	77	8.8	90	10.1	92	13.7	80	16.8	66	21.7	112	23.0	23	19.7	540	14.1
Dangerous or negligent acts endang. persons	30	3.4	28	3.1	13	1.9	8	1.7	4	1.3	3	0.6	--	--	86	2.2
Abduction, harassment etc.	10	1.1	18	2.0	14	2.1	13	2.7	6	2.0	7	1.4	1	0.9	69	1.8
Robbery, extortion etc.	23	2.6	33	3.7	61	9.1	24	5.0	19	6.3	34	7.0	4	3.4	198	5.2
Unlawful entry with intent/burglary, B&E	51	5.8	62	6.9	35	5.2	23	4.8	8	2.6	19	3.9	1	0.9	199	5.2
Theft and related	41	4.7	26	2.9	9	1.3	1	0.2	2	0.7	2	0.4	--	--	81	2.1
Fraud, deception and related	27	3.1	15	1.7	11	1.6	3	0.6	4	1.3	2	0.4	1	0.9	63	1.6
Illicit drug offences	114	13.0	178	19.9	106	15.8	114	23.9	98	32.2	108	22.2	37	31.6	755	19.7
Weapons and explosives	28	3.2	29	3.2	22	3.3	12	2.5	4	1.3	13	2.7	2	1.7	110	2.9
Property damage and environmental pollution	12	1.4	10	1.1	3	0.4	2	0.4	3	1.0	1	0.2	--	--	31	0.8
Public order offences	3	0.3	5	0.6	--	--	--	--	--	--	--	--	--	--	8	0.2
Traffic and vehicle regulatory offences	14	1.6	1	0.1	1	0.1	1	0.2	--	--	1	0.2	--	--	18	0.5
Offences against justice procedures etc.	34	3.9	19	2.1	11	1.6	10	2.1	3	1.0	3	0.6	4	3.4	84	2.2
Miscellaneous offences	7	0.8	--	--	2	0.3	2	0.4	1	0.3	4	0.8	1	0.9	17	0.4
TOTAL	874	100	894	100	673	100	476	100	304	100	486	100	117	100	3824	100

1. These statistics may include inmates who completed serving a sentence(s) for other offences(s) during the current imprisonment episode but remained in custody as an unsentenced inmate pending the outcome of other charges or awaiting deportation. The time spent in custody therefore includes any time served under sentence in the current episode.

2. Offences classified under Australian and New Zealand Standard Offence Classification (2011) - see explanatory note (j).

**Table 3.3.2 Most serious offence by time in custody -
Unsentenced female inmates in full-time custody**

Most serious offence ²	Time in custody ¹												TOTAL			
	< 1 month		1 - < 3 months		3 - < 6 months		6 - < 9 months		9 - < 12 months		1 - < 2 years				2+ years	
	No.	%	No.	%	No.	%	No.	%	No.	%	No.	%	No.	%	No.	%
Homicide and related	2	2.0	2	2.4	5	9.8	5	20.0	4	14.3	5	22.7	2	33.3	25	8.0
Acts intended to cause injury	49	49.5	35	42.7	15	29.4	2	8.0	1	3.6	3	13.6	--	--	105	33.5
Sexual assault and related	1	1.0	4	4.9	3	5.9	1	4.0	--	--	--	--	1	16.7	10	3.2
Dangerous or negligent acts endang. persons	5	5.1	--	--	--	--	--	--	1	3.6	1	4.5	--	--	7	2.2
Abduction, harassment etc.	1	1.0	1	1.2	--	--	2	8.0	--	--	--	--	--	--	4	1.3
Robbery, extortion etc.	3	3.0	1	1.2	6	11.8	3	12.0	1	3.6	--	--	--	--	14	4.5
Unlawful entry with intent/burglary, B&E	8	8.1	7	8.5	4	7.8	4	16.0	1	3.6	--	--	--	--	24	7.7
Theft and related	13	13.1	9	11.0	--	--	--	--	1	3.6	--	--	--	--	23	7.3
Fraud, deception and related	7	7.1	4	4.9	1	2.0	1	4.0	1	3.6	1	4.5	--	--	15	4.8
Illicit drug offences	10	10.1	12	14.6	14	27.5	6	24.0	18	64.3	11	50.0	2	33.3	73	23.3
Weapons and explosives	--	--	3	3.7	--	--	--	--	--	--	--	--	--	--	3	1.0
Property damage and environmental pollution	--	--	--	--	1	2.0	--	--	--	--	--	--	--	--	1	0.3
Public order offences	--	--	--	--	1	2.0	--	--	--	--	--	--	--	--	1	0.3
Traffic and vehicle regulatory offences	--	--	1	1.2	--	--	--	--	--	--	--	--	--	--	1	0.3
Offences against justice procedures etc.	--	--	2	2.4	--	--	1	4.0	--	--	--	--	--	--	3	1.0
Miscellaneous offences	--	--	1	1.2	1	2.0	--	--	--	--	1	4.5	1	16.7	4	1.3
TOTAL	99	100	82	100	51	100	25	100	28	100	22	100	6	100	313	100

1. These statistics may include inmates who completed serving a sentence(s) for other offences(s) during the current imprisonment episode but remained in custody as an unsentenced inmate pending the outcome of other charges or awaiting deportation. The time spent in custody therefore includes any time served under sentence in the current episode.

2. Offences classified under Australian and New Zealand Standard Offence Classification (2011) - see explanatory note (j).

Table 3.3.3 Most serious offence by time in custody - All unsentenced inmates in full-time custody

Most serious offence ²	Time in custody ¹														TOTAL	
	< 1 month		1 - < 3 months		3 - < 6 months		6 - < 9 months		9 - < 12 months		1 - < 2 years		2+ years			
	No.	%	No.	%	No.	%	No.	%	No.	%	No.	%	No.	%	No.	%
Homicide and related	14	1.4	18	1.8	31	4.3	36	7.2	26	7.8	72	14.2	33	26.8	230	5.6
Acts intended to cause injury	440	45.2	399	40.9	282	39.0	154	30.7	65	19.6	113	22.2	12	9.8	1465	35.4
Sexual assault and related	78	8.0	94	9.6	95	13.1	81	16.2	66	19.9	112	22.0	24	19.5	550	13.3
Dangerous or negligent acts endang. persons	35	3.6	28	2.9	13	1.8	8	1.6	5	1.5	4	0.8	--	--	93	2.2
Abduction, harassment etc.	11	1.1	19	1.9	14	1.9	15	3.0	6	1.8	7	1.4	1	0.8	73	1.8
Robbery, extortion etc.	26	2.7	34	3.5	67	9.3	27	5.4	20	6.0	34	6.7	4	3.3	212	5.1
Unlawful entry with intent/burglary, B&E	59	6.1	69	7.1	39	5.4	27	5.4	9	2.7	19	3.7	1	0.8	223	5.4
Theft and related	54	5.5	35	3.6	9	1.2	1	0.2	3	0.9	2	0.4	--	--	104	2.5
Fraud, deception and related	34	3.5	19	1.9	12	1.7	4	0.8	5	1.5	3	0.6	1	0.8	78	1.9
Illicit drug offences	124	12.7	190	19.5	120	16.6	120	24.0	116	34.9	119	23.4	39	31.7	828	20.0
Weapons and explosives	28	2.9	32	3.3	22	3.0	12	2.4	4	1.2	13	2.6	2	1.6	113	2.7
Property damage and environmental pollution	12	1.2	10	1.0	4	0.6	2	0.4	3	0.9	1	0.2	--	--	32	0.8
Public order offences	3	0.3	5	0.5	1	0.1	--	--	--	--	--	--	--	--	9	0.2
Traffic and vehicle regulatory offences	14	1.4	2	0.2	1	0.1	1	0.2	--	--	1	0.2	--	--	19	0.5
Offences against justice procedures etc.	34	3.5	21	2.2	11	1.5	11	2.2	3	0.9	3	0.6	4	3.3	87	2.1
Miscellaneous offences	7	0.7	1	0.1	3	0.4	2	0.4	1	0.3	5	1.0	2	1.6	21	0.5
TOTAL	973	100	976	100	724	100	501	100	332	100	508	100	123	100	4137	100

1. These statistics may include inmates who completed serving a sentence(s) for other offences(s) during the current imprisonment episode but remained in custody as an unsentenced inmate pending the outcome of other charges or awaiting deportation. The time spent in custody therefore includes any time served under sentence in the current episode.

2. Offences classified under Australian and New Zealand Standard Offence Classification (2011) - see explanatory note (j).

Section 4

POPULATION TRENDS

Table 4.1 Trends in the total inmate population by place of detention as at 30 June; 1982 to 2020 (includes periodic detainees)

Year	FULL-TIME CUSTODY				Periodic Detention Centres	TOTAL POPULATION ³
	Gazetted Correctional Centres	Transitional Centres ¹	Police/Court Complexes ²	Sub-total Full-time custody		
1982	3466	--	--	3466	253	3719
1983	3487	--	--	3487	246	3733
1984	3093	--	--	3093	261	3354
1985	3842	--	--	3842	273	4115
1986	3927	--	--	3927	302	4229
1987	4169	--	--	4169	382	4551
1988	4269	--	--	4269	422	4691
1989	4736	--	--	4736	546	5282
1990	5538	--	--	5538	829	6367
1991	5960	--	--	5960	1143	7103
1992	6228	--	--	6228	1257	7485
1993	6392	--	--	6392	1240	7632
1994	6420	--	--	6420	1291	7711
1995	6384	--	--	6384	1365	7749
1996	6267	--	--	6267	1424	7691
1997	6403	8	--	6411	1546	7957
1998	6475	14	--	6489	1335	7824
1999	7242	17	34	7293	1140	8433
2000	7330	15	2	7347	1202	8549
2001	7735	20	46	7801	1045	8846
2002	7793	23	60	7876	883	8759
2003	8009	26	59	8094	787	8881
2004	8498	29	60	8587	742	9329
2005	8948	27	30	9005	855	9860
2006	9051	27	52	9130	724	9854
2007	9486	28	43	9557	761	10318
2008	9701	30	128	9859	690	10549
2009	10276	29	63	10368	792	11160
2010	10233	35	25	10293	691	10984
2011	9888	28	29	9945	119	10064
2012	9566	27	50	9643	23	9666
2013	9842	20	58	9920	8	9928
2014	10536	30	12	10578	7	10585
2015	11644	30	114	11788	7	11795
2016	12435	25	163	12623	8	12631
2017	12974	25	149	13148	8	13156
2018	13584	23	115	13722	4	13726
2019 ⁴	13363	26	69	13458	n.a.	13458
2020	12631	32	68	12731	n.a.	12731

1. Transitional Centres commenced operation in September 1996.

2. Corrective Services NSW began managing a small number of Police/Court Complexes in 1992 and operations in this area have increased since 1999. Data on the number of inmates held in these places of detention as at 30 June each year is not available prior to 1999.

3. Total Inmate Population incorporates full-time custody and periodic detention (before 2019). Prior to 2007 published totals for "Total inmates" included inmates held in gazetted correctional centres and periodic detention centres only and excluded transitional centres and police/court complexes - see explanatory note (b).

4. Periodic detainees are no longer existed from 2019 onwards.

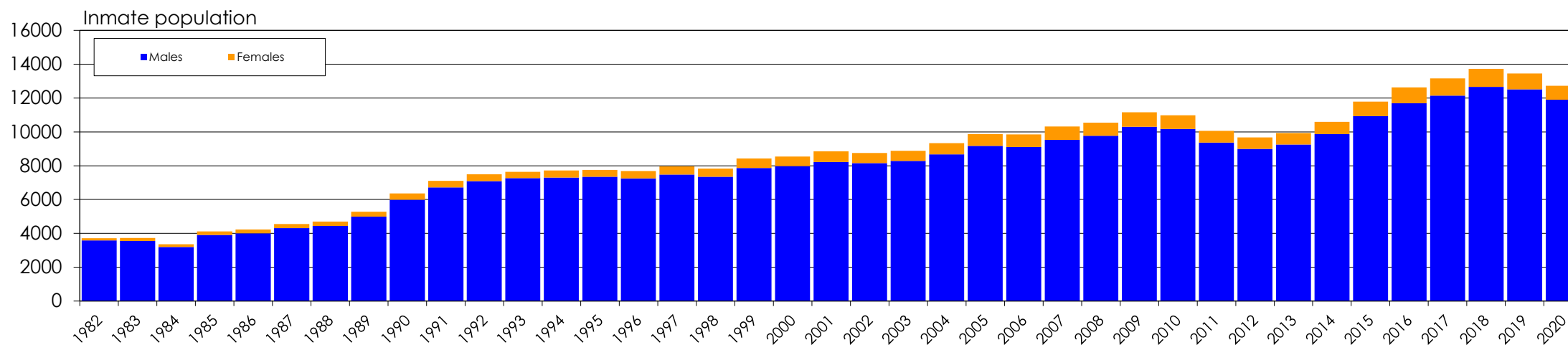
n.a. - not available.

**Table 4.2 Trends in the gender of the inmate population as at 30 June;
1982 to 2020 (includes periodic detainees)**

Year	FULL-TIME CUSTODY		PERIODIC DETENTION		TOTAL	
	Males	Female	Male	Female	Male	Female
1982	3335	131	247	6	3582	137
1983	3316	171	235	11	3551	182
1984	2936	157	252	9	3188	166
1985	3642	200	265	8	3907	208
1986	3726	201	281	21	4007	222
1987	3961	208	352	30	4313	238
1988	4038	231	398	24	4436	255
1989	4473	263	519	27	4992	290
1990	5197	341	785	44	5982	385
1991	5626	334	1085	58	6711	392
1992	5898	330	1189	68	7087	398
1993	6087	305	1184	56	7271	361
1994	6100	320	1202	89	7302	409
1995	6070	314	1270	95	7340	409
1996	5929	338	1324	100	7253	438
1997	6057	354	1419	127	7476	481
1998	6117	372	1225	110	7342	482
1999	6832	461	1031	109	7863	570
2000	6877	470	1095	107	7972	577
2001	7259	542	967	78	8226	620
2002	7340	536	814	69	8154	605
2003	7565	529	724	63	8289	592
2004	7988	599	683	59	8671	658
2005	8384	621	783	72	9167	693
2006	8450	680	664	60	9114	740
2007	8852	705	682	79	9534	784
2008	9137	722	631	59	9768	781
2009	9587	781	719	73	10306	854
2010	9529	764	638	53	10167	817
2011	9253	692	108	11	9361	703
2012	8977	666	21	2	8998	668
2013	9240	680	7	1	9247	681
2014	9861	717	6	1	9867	718
2015	10926	862	6	1	10932	863
2016	11682	941	7	1	11689	942
2017	12143	1005	6	2	12149	1007
2018	12650	1072	4	--	12654	1072
2019 ¹	12509	949	0	n.a.	12509	949
2020	11895	836	0	n.a.	11895	836

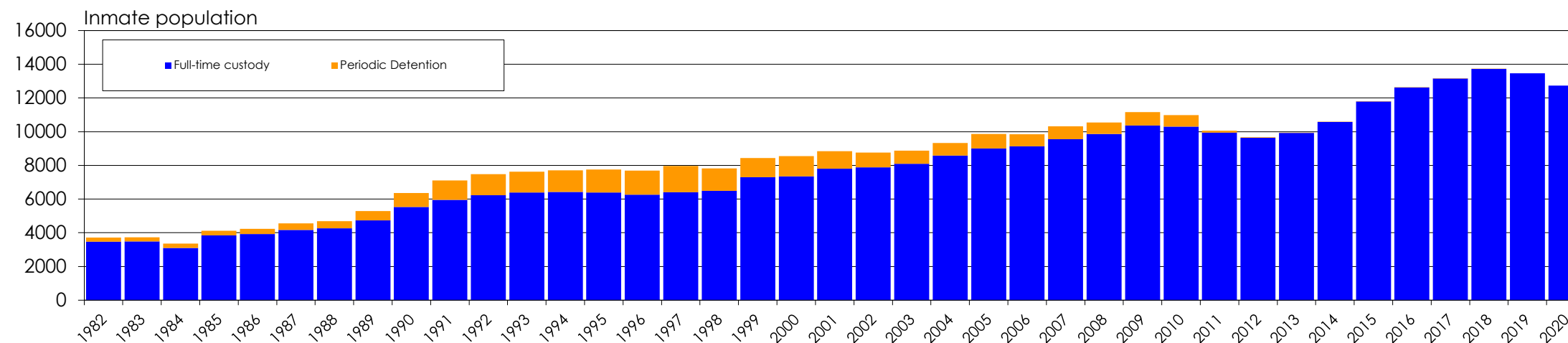
1. Periodic detainees are no longer existed from 2019 onwards.
n.a. - not available.

Figure 1: Trends in the gender of the inmate population (includes periodic detention) as at 30 June each year



Periodic detainees are no longer existed from 2019 onwards.

Figure 2: Trends in the inmate custodial program (includes periodic detention) as at 30 June each year



Periodic detainees are no longer existed from 2019 onwards.

Table 4.3 Trends in the Aboriginal/TSI ¹ status of inmates as at 30 June; 1982 to 2020 (includes periodic detainees)

Year	Aboriginal/TSI		Non-Aboriginal		Unknown		All inmates
	Number	%	Number	%	Number	%	Number
1982	216	5.8%	3474	93.4%	29	0.8%	3719
1983	236	6.3%	3394	90.9%	103	2.8%	3733
1984	242	7.2%	3047	90.8%	65	1.9%	3354
1985	304	7.4%	3726	90.5%	85	2.1%	4115
1986	338	8.0%	3762	89.0%	129	3.1%	4229
1987	369	8.1%	4105	90.2%	77	1.7%	4551
1988	385	8.2%	4097	87.3%	209	4.5%	4691
1989	415	7.9%	4858	92.0%	9	0.2%	5282
1990	579	9.1%	5510	86.5%	278	4.4%	6367
1991	664	9.3%	6069	85.4%	370	5.2%	7103
1992	648	8.7%	6740	90.0%	97	1.3%	7485
1993	729	9.6%	6809	89.2%	94	1.2%	7632
1994	827	10.7%	6828	88.5%	56	0.7%	7711
1995	888	11.5%	6754	87.2%	107	1.4%	7749
1996	952	12.4%	6598	85.8%	141	1.8%	7691
1997	1010	12.7%	6817	85.7%	130	1.6%	7957
1998	1091	13.9%	6689	85.5%	44	0.6%	7824
1999	1265	15.0%	7142	84.7%	26	0.3%	8433
2000	1249	14.6%	7250	84.8%	50	0.6%	8549
2001	1339	15.1%	7419	83.9%	88	1.0%	8846
2002	1503	17.2%	7166	81.8%	90	1.0%	8759
2003	1563	17.6%	7099	79.9%	219	2.5%	8881
2004	1576	16.9%	7629	81.8%	124	1.3%	9329
2005	1699	17.2%	7874	79.9%	287	2.9%	9860
2006	1966	20.0%	7681	77.9%	207	2.1%	9854
2007	2072	20.1%	8046	78.0%	200	1.9%	10318
2008	2150	20.4%	8153	77.3%	246	2.3%	10549
2009	2382	21.3%	8394	75.2%	384	3.4%	11160
2010	2337	21.3%	8352	76.0%	295	2.7%	10984
2011	2303	22.9%	7744	76.9%	17	0.2%	10064
2012	2243	23.2%	7293	75.5%	130	1.3%	9666
2013	2318	23.3%	7485	75.4%	125	1.3%	9928
2014	2503	23.6%	8027	75.8%	55	0.5%	10585
2015	2849	24.2%	8938	75.8%	8	0.1%	11795
2016	3037	24.0%	9584	75.9%	10	0.1%	12631
2017	3200	24.3%	9947	75.6%	9	0.1%	13156
2018	3383	24.6%	10334	75.3%	9	0.1%	13726
2019 ²	3436	25.5%	10010	74.4%	12	0.1%	13458
2020	3337	26.2%	9385	73.7%	9	0.1%	12731

1. The method for determining Aboriginality status changed in 2002 - see explanatory note (d).

2. Periodic detainees are no longer existed from 2019 onwards.

**Table 4.4 Trends in legal status of inmates as at 30 June;
1982 to 2020 (includes periodic detainees)**

Year	Sentenced ¹		Appellant		Unconvicted ²		Other ³	
	Number	%	Number	%	Number	%	Number	%
1982	3110	83.6%	150	4.0%	456	12.3%	3	0.1%
1983	3098	83.0%	114	3.1%	519	13.9%	2	0.1%
1984	2722	81.2%	150	4.5%	479	14.3%	3	0.1%
1985	3339	81.1%	144	3.5%	629	15.3%	3	0.1%
1986	3477	82.2%	133	3.1%	614	14.5%	5	0.1%
1987	3702	81.3%	181	4.0%	663	14.6%	5	0.1%
1988	3712	79.1%	236	5.0%	734	15.6%	9	0.2%
1989	4193	79.4%	351	6.6%	738	14.0%	--	--
1990	4983	78.3%	535	8.4%	837	13.1%	12	0.2%
1991	5651	79.6%	609	8.6%	839	11.8%	4	0.1%
1992	6056	80.9%	676	9.0%	748	10.0%	5	0.1%
1993	6161	80.7%	691	9.1%	777	10.2%	3	0.0%
1994	6353	82.4%	617	8.0%	736	9.5%	5	0.1%
1995	6487	83.7%	543	7.0%	712	9.2%	7	0.1%
1996	6374	82.9%	513	6.7%	800	10.4%	4	0.1%
1997	6506	81.8%	459	5.8%	987	12.4%	5	0.1%
1998	6343	81.1%	426	5.4%	1048	13.4%	7	0.1%
1999	6519	77.3%	593	7.0%	1281	15.2%	40	0.5%
2000	6488	75.9%	582	6.8%	1434	16.8%	45	0.5%
2001	6636	75.0%	570	6.4%	1605	18.1%	35	0.4%
2002	6599	75.3%	517	5.9%	1634	18.7%	9	0.1%
2003	6580	74.1%	464	5.2%	1831	20.6%	6	0.1%
2004	6870	73.6%	585	6.3%	1870	20.0%	4	0.0%
2005	7381	74.9%	478	4.8%	1994	20.2%	7	0.1%
2006	7342	74.5%	370	3.8%	2136	21.7%	6	0.1%
2007	7658	74.2%	346	3.4%	2307	22.4%	7	0.1%
2008	7726	73.2%	349	3.3%	2469	23.4%	5	0.0%
2009	8213	73.6%	335	3.0%	2593	23.2%	19	0.2%
2010	8204	74.7%	276	2.5%	2502	22.8%	2	0.0%
2011	7125	70.8%	301	3.0%	2635	26.2%	3	0.0%
2012	6902	71.4%	278	2.9%	2486	25.7%	--	--
2013	6868	69.2%	281	2.8%	2778	28.0%	1	0.0%
2014	7511	71.0%	325	3.1%	2748	26.0%	1	0.0%
2015	7826	66.4%	378	3.2%	3590	30.4%	1	0.0%
2016	8110	64.2%	372	2.9%	4148	32.8%	1	0.0%
2017	8529	64.8%	371	2.8%	4256	32.4%	--	--
2018	8699	63.4%	436	3.2%	4591	33.4%	--	--
2019 ⁴	8479	63.0%	460	3.4%	4519	33.6%	--	--
2020	8207	64.5%	387	3.0%	4136	32.5%	1	0.0%

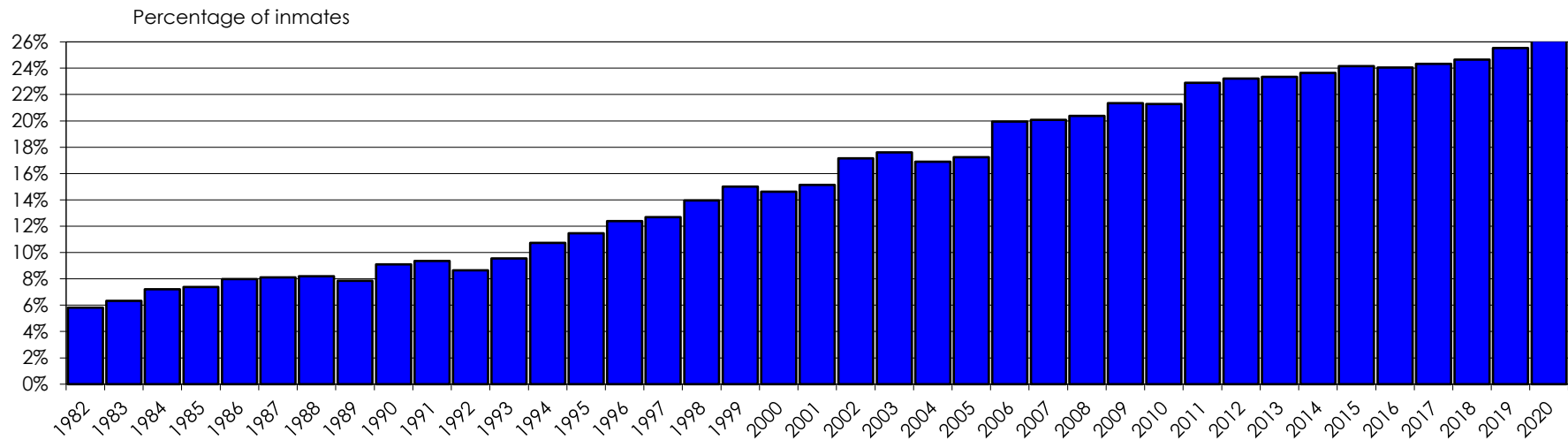
1. Sentenced includes inmates with a legal status of forensic patient.

2. Unconvicted includes remand/trial and awaiting sentence.

3. Other includes awaiting deportation, awaiting extradition and civil inmates.

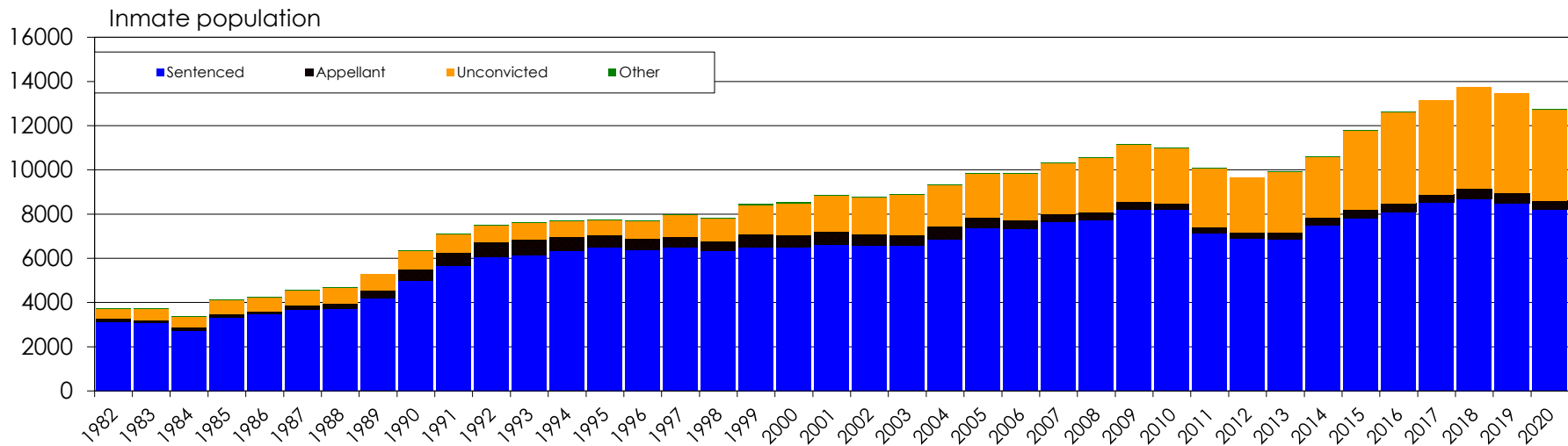
4. Periodic detainees are no longer existed from 2019 onwards.

Figure 3: Trends in the Aboriginal/TSI inmates (includes periodic detention) as at 30 June each year



Note: Method for determining Aboriginality status changed in 2002. See explanatory note (d).
 Periodic detainees are no longer existed from 2019 onwards.

Figure 4: Trends in the legal status of inmates (includes periodic detention) as at 30 June each year



Note: Sentenced inmates includes Forensic patients. Other inmates includes awaiting sentence, deportees, extradition and civil inmates
 Periodic detainees are no longer existed from 2019 onwards.

Table 4.5 Trends in the Aboriginal/TSI¹ inmate population - by gender as at 30 June; 1982 to 2020 (includes periodic detainees)

Year	Males		Females		Total
	Number	%	Number	%	Number
1982	210	97.2%	6	2.8%	216
1983	226	95.8%	10	4.2%	236
1984	234	96.7%	8	3.3%	242
1985	294	96.7%	10	3.3%	304
1986	325	96.2%	13	3.8%	338
1987	350	94.9%	19	5.1%	369
1988	358	93.0%	27	7.0%	385
1989	382	92.0%	33	8.0%	415
1990	543	93.8%	36	6.2%	579
1991	613	92.3%	51	7.7%	664
1992	599	92.4%	49	7.6%	648
1993	685	94.0%	44	6.0%	729
1994	764	92.4%	63	7.6%	827
1995	831	93.6%	57	6.4%	888
1996	878	92.2%	74	7.8%	952
1997	934	92.5%	76	7.5%	1010
1998	994	91.1%	97	8.9%	1091
1999	1152	91.1%	113	8.9%	1265
2000	1139	91.2%	110	8.8%	1249
2001	1201	89.7%	138	10.3%	1339
2002	1346	89.6%	157	10.4%	1503
2003	1403	89.8%	160	10.2%	1563
2004	1420	90.1%	156	9.9%	1576
2005	1521	89.5%	178	10.5%	1699
2006	1747	88.9%	219	11.1%	1966
2007	1846	89.1%	226	10.9%	2072
2008	1930	89.8%	220	10.2%	2150
2009	2146	90.1%	236	9.9%	2382
2010	2122	90.8%	215	9.2%	2337
2011	2092	90.8%	211	9.2%	2303
2012	2046	91.2%	197	8.8%	2243
2013	2117	91.3%	201	8.7%	2318
2014	2267	90.6%	236	9.4%	2503
2015	2549	89.5%	300	10.5%	2849
2016	2727	89.8%	310	10.2%	3037
2017	2880	90.0%	320	10.0%	3200
2018	3006	88.9%	377	11.1%	3383
2019 ²	3132	91.2%	304	8.8%	3436
2020	3056	91.6%	281	8.4%	3337

1. The method for determining Aboriginality status changed in 2002 - see explanatory note (d).

2. Periodic detainees are no longer existed from 2019 onwards.

Table 4.6 Trends in the Aboriginal/TSI¹ inmate population by gender and custodial program as at 30 June; 1982 to 2020 (includes periodic detainees)

Year	FULL-TIME CUSTODY							PERIODIC DETENTION						
	Male			Female			Total %	Male			Female			Total %
	ATSI	Non-ATSI ²	% ATSI	ATSI	Non-ATSI ²	% ATSI		ATSI	Non-ATSI ²	% ATSI	ATSI	Non-ATSI ²	% ATSI	
1982	203	3132	6.1%	6	125	4.6%	6.0%	7	240	2.8%	--	6	--	2.8%
1983	220	3096	6.6%	10	161	5.8%	6.6%	6	229	2.6%	--	11	--	2.4%
1984	229	2707	7.8%	8	149	5.1%	7.7%	5	247	2.0%	--	9	--	1.9%
1985	287	3355	7.9%	9	191	4.5%	7.7%	7	258	2.6%	1	7	12.5%	2.9%
1986	319	3407	8.6%	13	188	6.5%	8.5%	6	275	2.1%	--	21	--	2.0%
1987	338	3623	8.5%	16	192	7.7%	8.5%	12	340	3.4%	3	27	10.0%	3.9%
1988	344	3694	8.5%	24	207	10.4%	8.6%	14	384	3.5%	3	21	12.5%	4.0%
1989	357	4116	8.0%	32	231	12.2%	8.2%	25	494	4.8%	1	26	3.7%	4.8%
1990	515	4682	9.9%	35	306	10.3%	9.9%	28	757	3.6%	1	43	2.3%	3.5%
1991	578	5048	10.3%	47	287	14.1%	10.5%	35	1050	3.2%	4	54	6.9%	3.4%
1992	567	5331	9.6%	43	287	13.0%	9.8%	32	1157	2.7%	6	62	8.8%	3.0%
1993	647	5440	10.6%	40	265	13.1%	10.7%	38	1146	3.2%	4	52	7.1%	3.4%
1994	717	5383	11.8%	59	261	18.4%	12.1%	47	1155	3.9%	4	85	4.5%	4.0%
1995	773	5297	12.7%	46	268	14.6%	12.8%	58	1212	4.6%	11	84	11.6%	5.1%
1996	803	5126	13.5%	66	272	19.5%	13.9%	75	1249	5.7%	8	92	8.0%	5.8%
1997	851	5206	14.0%	61	293	17.2%	14.2%	83	1336	5.8%	15	112	11.8%	6.3%
1998	903	5214	14.8%	84	288	22.6%	15.2%	91	1134	7.4%	13	97	11.8%	7.8%
1999	1083	5749	15.9%	107	354	23.2%	16.3%	69	962	6.7%	6	103	5.5%	6.6%
2000	1068	5809	15.5%	99	371	21.1%	15.9%	71	1024	6.5%	11	96	10.3%	6.8%
2001	1126	6133	15.5%	130	412	24.0%	16.1%	75	892	7.8%	8	70	10.3%	7.9%
2002	1276	6064	17.4%	149	387	27.8%	18.1%	70	744	8.6%	8	61	11.6%	8.8%
2003	1355	6210	17.9%	149	380	28.2%	18.6%	48	676	6.6%	11	52	17.5%	7.5%
2004	1377	6611	17.2%	152	447	25.4%	17.8%	43	640	6.3%	4	55	6.8%	6.3%
2005	1472	6912	17.6%	168	453	27.1%	18.2%	49	734	6.3%	10	62	13.9%	6.9%
2006	1705	6745	20.2%	210	470	30.9%	21.0%	42	622	6.3%	9	51	15.0%	7.0%
2007	1779	7073	20.1%	214	491	30.4%	20.9%	67	615	9.8%	12	67	15.2%	10.4%
2008	1866	7271	20.4%	214	508	29.6%	21.1%	64	567	10.1%	6	53	10.2%	10.1%
2009	2071	7516	21.6%	230	551	29.4%	22.2%	75	644	10.4%	6	67	8.2%	10.2%
2010	2066	7463	21.7%	209	555	27.4%	22.1%	56	582	8.8%	6	47	11.3%	9.0%
2011	2080	7173	22.5%	209	483	30.2%	23.0%	12	96	11.1%	2	9	18.2%	11.8%
2012	2045	6932	22.8%	196	470	29.4%	23.2%	1	20	4.8%	1	1	50.0%	8.7%
2013	2116	7124	22.9%	200	480	29.4%	23.3%	1	6	14.3%	1	--	100.0%	25.0%
2014	2266	7595	23.0%	235	482	32.8%	23.6%	1	5	16.7%	1	--	100.0%	28.6%
2015	2548	8378	23.3%	299	563	34.7%	24.2%	1	5	16.7%	1	--	100.0%	28.6%
2016	2726	8956	23.3%	309	632	32.8%	24.0%	1	6	14.3%	1	--	100.0%	25.0%
2017	2878	9265	23.7%	319	686	31.7%	24.3%	2	4	33.3%	1	1	50.0%	37.5%
2018	3004	9646	23.7%	377	695	35.2%	24.6%	2	2	50.0%	--	--	--	50.0%
2019 ³	3132	9377	25.0%	304	645	32.0%	25.5%	n.a.	n.a.	n.a.	n.a.	n.a.	n.a.	n.a.
2020	3056	8839	25.7%	281	555	33.6%	26.2%	n.a.	n.a.	n.a.	n.a.	n.a.	n.a.	n.a.

ATSI - Aboriginal/Torres Strait Islander.

1. The method for determining Aboriginality status changed in 2002. See explanatory note (d).

2. Non-ATSI includes inmates with unknown Aboriginal/Torres Strait Islander status.

3. Periodic detainees are no longer existed from 2019 onwards.

n.a. - not available.

Table 4.7 Trends in the security classification of convicted inmates ¹ held in full-time custody as at 30 June; 1983 to 2020 (excludes periodic detainees)

Year	Maximum ²		Medium ³		Minimum ⁴		Unclassified	
	Number	%	Number	%	Number	%	Number	%
1983	956	31.3%	189	6.2%	1702	55.7%	209	6.8%
1984	898	34.4%	268	10.3%	1396	53.5%	49	1.9%
1985	920	28.9%	362	11.4%	1845	57.9%	60	1.9%
1986	1004	30.3%	566	17.1%	1680	50.7%	61	1.8%
1987	871	25.9%	625	18.6%	1868	55.4%	5	0.1%
1988	884	25.2%	701	19.9%	1926	54.8%	3	0.1%
1989	1005	26.6%	770	20.4%	2005	53.0%	--	--
1990	1062	22.6%	866	18.5%	2643	56.4%	118	2.5%
1991	777	15.2%	1102	21.5%	2864	56.0%	374	7.3%
1992	726	13.3%	1306	23.9%	3229	59.0%	214	3.9%
1993	717	12.8%	1195	21.3%	3474	61.9%	226	4.0%
1994	727	12.8%	1102	19.4%	3538	62.3%	312	5.5%
1995	607	10.7%	1066	18.8%	3763	66.4%	229	4.0%
1996	479	8.8%	1149	21.0%	3709	67.9%	126	2.3%
1997	489	9.0%	1126	20.8%	3725	68.7%	79	1.5%
1998	502	9.3%	1094	20.2%	3732	68.9%	92	1.7%
1999	557	9.3%	1184	19.8%	3988	66.8%	243	4.1%
2000	530	9.0%	1191	20.3%	4019	68.5%	128	2.2%
2001	544	8.8%	1185	19.2%	4291	69.6%	141	2.3%
2002	481	7.7%	1141	18.3%	4239	68.0%	372	6.0%
2003	647	10.3%	1212	19.4%	4304	68.8%	94	1.5%
2004	741	11.0%	1329	19.8%	4483	66.8%	160	2.4%
2005	817	11.7%	1359	19.4%	4703	67.1%	125	1.8%
2006	809	11.6%	1287	18.4%	4737	67.8%	155	2.2%
2007	833	11.5%	1352	18.7%	4938	68.2%	120	1.7%
2008	781	10.6%	1399	18.9%	4964	67.2%	241	3.3%
2009	694	8.9%	1364	17.6%	5547	71.5%	151	1.9%
2010	764	9.8%	1464	18.8%	5434	69.8%	127	1.6%
2011	795	10.9%	1381	18.9%	5044	69.0%	87	1.2%
2012	756	10.6%	1425	19.9%	4849	67.8%	127	1.8%
2013	729	10.2%	1475	20.7%	4813	67.4%	124	1.7%
2014	791	10.1%	1761	22.5%	5147	65.7%	130	1.7%
2015	854	10.4%	1855	22.6%	5315	64.8%	173	2.1%
2016	993	11.7%	1978	23.3%	5312	62.6%	199	2.3%
2017	1169	13.1%	2054	23.1%	5513	62.0%	156	1.8%
2018	1210	13.3%	1956	21.4%	5799	63.5%	166	1.8%
2019	1370	15.3%	1975	22.1%	5453	61.0%	141	1.6%
2020	1628	18.9%	1975	23.0%	4846	56.4%	145	1.7%

1. Based on legal status (rather than inmate classification).

2. Maximum comprises classifications Life, AA, A1, A2 and E1 and Category 5 (females).

3. Medium comprises classifications B, E2 and Category 4 (females).

4. Minimum comprises inmates classified C1, C2 or C3 and Category 3, Category 2 and Category 1 (females). Includes Compulsory Drug Treatment Centres inmates (from 2007 onwards).

Table 4.8 Trends in most serious offence (ANZSOC¹) as at 30 June; 1982 to 2020 (includes periodic detainees)

Year	Homicide	Acts intend. injury	Sexual assault	Dangerous / negligent acts	Abduction etc	Robbery etc	Unlawful entry	Theft etc	Fraud etc	Illicit drug	Weapons etc	Property damage etc	Public order	Traffic and vehicle etc	Justice procedures etc	Miscellaneous
1982	423	231	289	224	22	661	577	443	165	384	14	48	23	130	72	13
1983	362	237	270	150	23	686	664	484	177	391	12	45	19	127	70	16
1984	361	231	204	123	26	646	545	425	148	388	8	36	35	111	57	10
1985	439	239	218	152	34	786	715	423	185	597	12	55	28	122	92	18
1986	429	201	287	146	31	807	693	464	190	670	13	41	18	127	95	17
1987	437	313	300	173	35	711	686	594	224	731	18	58	19	148	86	18
1988	480	377	294	163	38	728	737	604	227	697	25	54	37	119	94	17
1989	477	532	323	169	11	693	864	733	223	723	36	40	58	120	186	94
1990	519	594	466	124	44	746	968	791	274	800	39	66	149	452	232	103
1991	571	684	532	155	58	823	1091	864	333	861	29	85	130	471	316	100
1992	573	711	598	126	48	935	1017	864	371	1013	42	83	136	490	372	106
1993	575	770	678	103	40	1016	1010	766	352	1191	53	80	132	418	337	111
1994	579	801	745	105	38	1075	990	750	378	1203	45	76	117	321	380	108
1995	592	868	743	88	49	1029	942	740	379	1142	28	107	120	377	432	113
1996	633	937	712	106	43	1020	968	748	351	1016	30	70	117	407	426	107
1997	625	1009	701	103	48	1043	972	788	413	1015	24	90	137	424	447	118
1998	659	1031	756	92	57	1073	804	704	394	822	30	64	132	339	743	124
1999	695	1028	732	112	51	1175	871	731	369	862	46	69	138	420	957	177
2000	756	1020	716	111	58	1220	821	692	388	945	50	47	136	506	877	206
2001	801	1192	640	141	64	1346	949	703	327	948	37	65	155	513	789	176
2002	813	1222	585	141	93	1331	848	648	313	942	42	64	156	528	888	145
2003	844	1449	638	126	92	1213	937	625	290	950	67	58	154	566	727	145
2004	861	1473	647	132	106	1164	1046	617	293	1072	101	76	129	565	888	159
2005	876	1685	731	125	103	1110	1029	622	347	1152	126	60	145	664	937	148
2006	881	1587	754	115	130	1069	1012	629	336	1107	97	76	134	698	1056	173
2007	907	1921	819	109	131	1062	993	629	366	1142	102	84	146	653	1131	123
2008	929	1894	934	143	121	1163	941	450	337	1459	123	98	113	655	1100	89
2009	868	2173	983	187	139	1126	1064	515	339	1571	152	99	129	638	1150	27
2010	918	2071	998	187	144	1182	1046	506	313	1617	130	92	114	580	1065	21
2011	920	1777	978	202	142	1104	935	385	254	1546	118	105	93	322	1148	35
2012	870	1683	966	222	156	1063	875	410	233	1486	130	102	79	312	1049	30
2013	855	1875	1011	227	176	1031	883	418	222	1576	144	86	88	253	1035	48
2014	877	2035	1105	216	174	1012	959	403	224	1646	159	103	107	318	1193	54
2015	915	2489	1279	275	201	1046	1013	384	282	1905	226	92	97	355	1190	46
2016	928	2653	1475	298	213	993	1019	433	347	2138	234	124	110	328	1280	58
2017	906	2908	1627	349	203	885	1016	451	354	2335	242	100	108	340	1293	39
2018	923	3084	1814	381	194	892	1055	509	370	2364	296	141	121	275	1262	45
2019 ²	977	3190	1990	369	192	792	940	416	338	2125	289	98	83	162	1462	35
2020	990	3099	2108	314	215	707	774	311	288	1987	274	101	50	99	1374	40

1. Series is based on ANZSOC 2011. Data for years prior to 1989 are unable to re-classified to ANZSOC 2011 and are mapped to ASOC Division 1997). Coding of Miscellaneous offences was revised in 2012 and previous year results have been amended. See explanatory notes (j) and (k).

2. Periodic detainees are no longer existed from 2019 onwards.

Figure 5: Trends in the security classification of convicted inmates (excl. periodic detention) as at 30 June each year

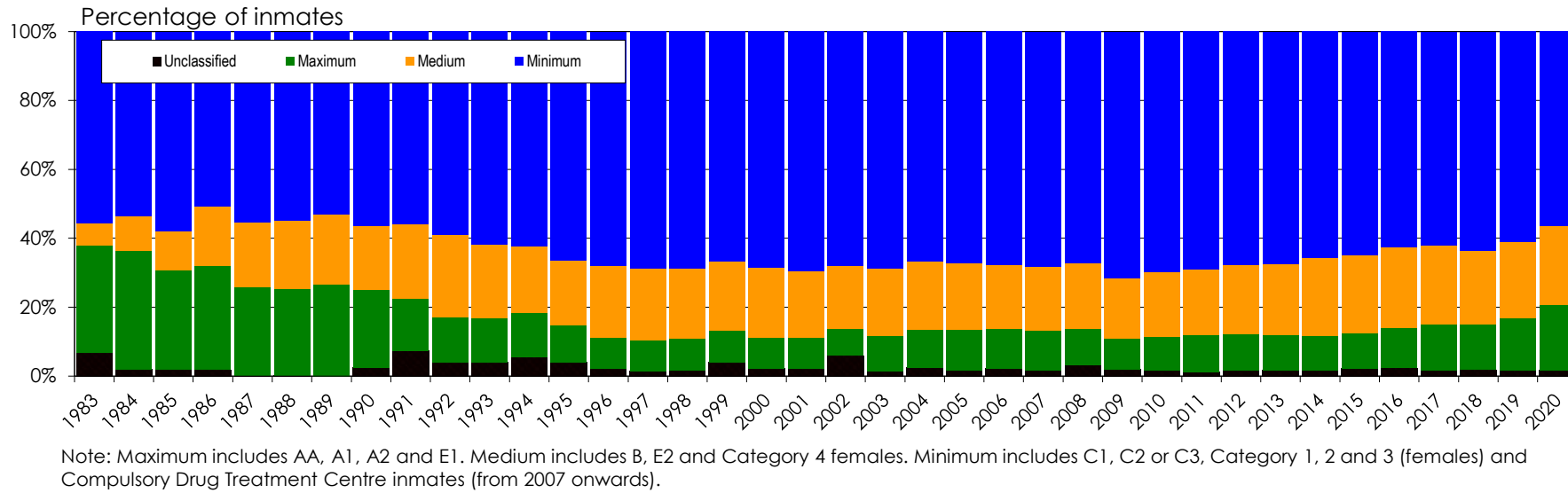
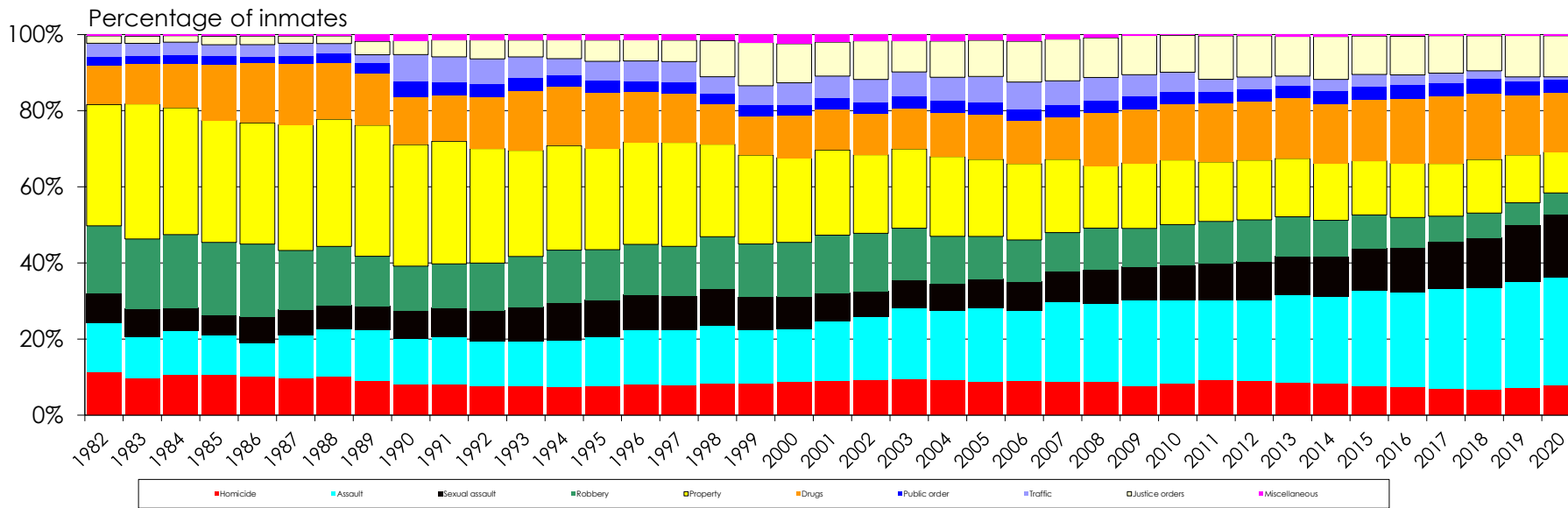


Figure 6: Trends in most serious offence¹ (includes periodic detention) as at 30 June each year



1. Categories are based on ANZSOC 2011 and have been collapsed for presentation purposes (see Appendix 2).
 2. Periodic detainees are no longer existed from 2019 onwards.

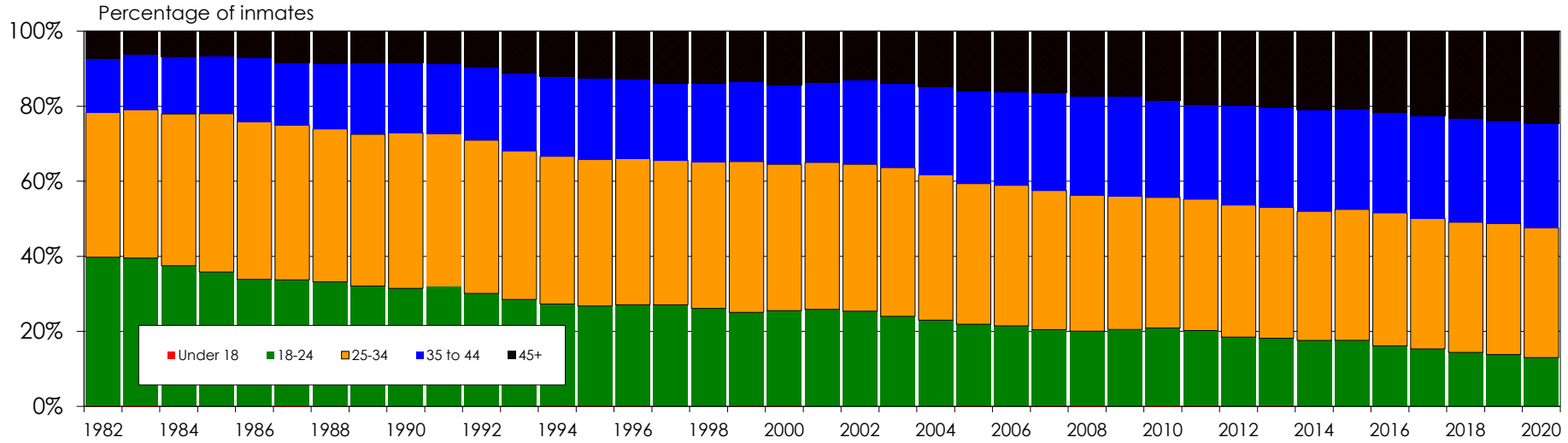
**Table 4.9 Trends in the age profile of inmates as at 30 June;
1982 to 2020 (includes periodic detainees)**

Year	Under 18 ¹		18 to 24 years		25 to 34 years		35 to 44 years		45 years +	
	Number	%	Number	%	Number	%	Number	%	Number	%
1982	15	0.4%	1463	39.3%	1434	38.6%	538	14.5%	269	7.2%
1983	9	0.2%	1466	39.3%	1477	39.6%	553	14.8%	228	6.1%
1984	6	0.2%	1251	37.3%	1356	40.4%	510	15.2%	231	6.9%
1985	9	0.2%	1464	35.6%	1736	42.2%	629	15.3%	277	6.7%
1986	7	0.2%	1424	33.7%	1776	42.0%	720	17.0%	302	7.1%
1987	13	0.3%	1521	33.4%	1876	41.2%	759	16.7%	382	8.4%
1988	5	0.1%	1551	33.1%	1912	40.8%	820	17.5%	403	8.6%
1989	5	0.1%	1689	32.0%	2135	40.4%	1010	19.1%	443	8.4%
1990	6	0.1%	1996	31.3%	2639	41.4%	1181	18.5%	545	8.6%
1991	--	--	2269	31.9%	2892	40.7%	1328	18.7%	614	8.6%
1992	--	--	2253	30.1%	3056	40.8%	1452	19.4%	724	9.7%
1993	--	--	2174	28.5%	3018	39.5%	1593	20.9%	847	11.1%
1994	1	0.0%	2102	27.3%	3035	39.4%	1644	21.3%	929	12.0%
1995	1	0.0%	2072	26.7%	3023	39.0%	1673	21.6%	980	12.6%
1996	1	0.0%	2081	27.1%	2999	39.0%	1633	21.2%	977	12.7%
1997	--	--	2153	27.1%	3061	38.5%	1641	20.6%	1102	13.8%
1998	--	--	2042	26.1%	3051	39.0%	1644	21.0%	1087	13.9%
1999	2	0.0%	2110	25.0%	3389	40.2%	1792	21.2%	1140	13.5%
2000	1	0.0%	2180	25.5%	3333	39.0%	1807	21.1%	1228	14.4%
2001	--	--	2286	25.8%	3464	39.2%	1882	21.3%	1214	13.7%
2002	--	--	2222	25.4%	3428	39.1%	1962	22.4%	1147	13.1%
2003	1	0.0%	2130	24.0%	3519	39.6%	1986	22.4%	1245	14.0%
2004	--	--	2143	23.0%	3615	38.8%	2178	23.3%	1393	14.9%
2005	23	0.2%	2135	21.7%	3694	37.5%	2439	24.7%	1569	15.9%
2006	21	0.2%	2093	21.2%	3690	37.4%	2457	24.9%	1593	16.2%
2007	22	0.2%	2088	20.2%	3824	37.1%	2688	26.1%	1696	16.4%
2008	28	0.3%	2086	19.8%	3819	36.2%	2779	26.3%	1837	17.4%
2009	21	0.2%	2266	20.3%	3969	35.6%	2956	26.5%	1948	17.5%
2010	29	0.3%	2265	20.6%	3822	34.8%	2840	25.9%	2028	18.5%
2011	21	0.2%	2013	20.0%	3523	35.0%	2530	25.1%	1977	19.6%
2012	15	0.2%	1769	18.3%	3402	35.2%	2550	26.4%	1930	20.0%
2013	21	0.2%	1781	17.9%	3460	34.9%	2655	26.7%	2011	20.3%
2014	14	0.1%	1846	17.4%	3641	34.4%	2852	26.9%	2232	21.1%
2015	--	--	2076	17.6%	4114	34.9%	3145	26.7%	2460	20.9%
2016	--	--	2037	16.1%	4476	35.4%	3392	26.9%	2726	21.6%
2017	--	--	2014	15.3%	4575	34.8%	3608	27.4%	2959	22.5%
2018	--	--	1974	14.4%	4760	34.7%	3806	27.7%	3186	23.2%
2019 ²	--	--	1857	13.8%	4702	34.9%	3670	27.3%	3229	24.0%
2020	--	--	1654	13.0%	4405	34.6%	3525	27.7%	3147	24.7%

1. Corrective Services NSW took management of Kariong Juvenile Correctional Centre between December 2004 and May 2015, accounting for the increase in the number of inmates in this age category over that period.

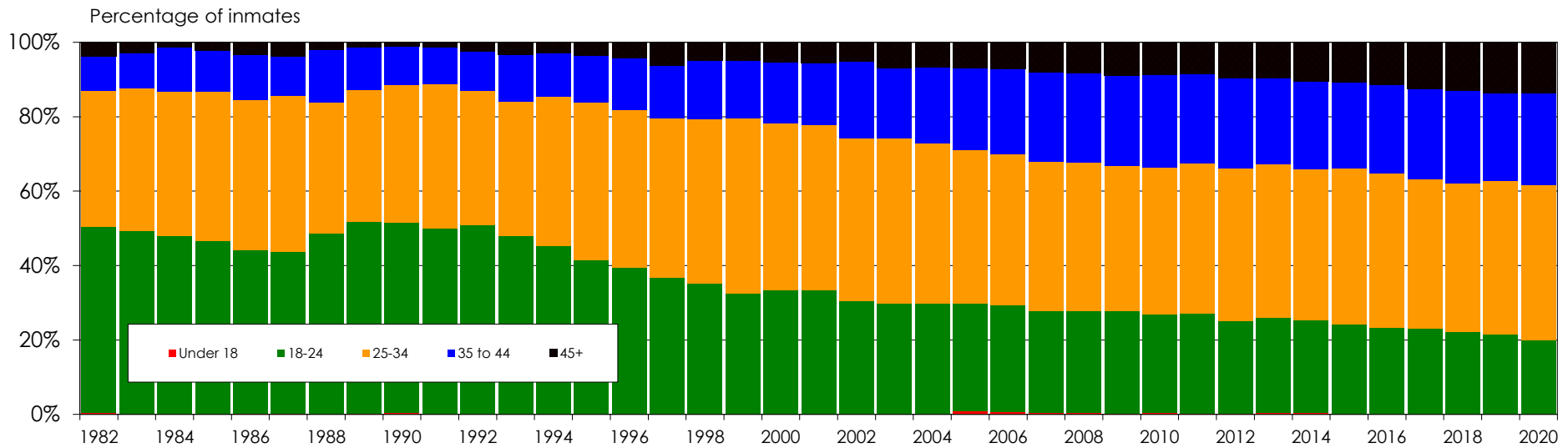
2. Periodic detainees are no longer existed from 2019 onwards.

Figure 7: Trends in the age profile of inmates (includes periodic detention) as at 30 June each year



Periodic detainees are no longer existed from 2019 onwards.

Figure 8: Trends in age profile of Aboriginal/TSI inmates (includes periodic detention) as at 30 June each year



Periodic detainees are no longer existed from 2019 onwards.

APPENDICES

APPENDIX 1

Australian and New Zealand Standard Offence Classification (ANZSOC), 2011

source: Australian Bureau of Statistics Catalogue No: 1234.0, ABS

Division	Subdivision	Group
1	Homicide and related offences	
	11	Murder
	111	Murder
	12	Attempted murder
	121	Attempted murder
	13	Manslaughter and driving causing death
	131	Manslaughter
	132	Driving causing death
2	Acts intended to cause injury	
	21	Assault
	211	Aggravated assault
	212	Non-aggravated assault
	213	Common assault
	29	Other acts intended to cause injury
	291	Stalking
	299	Other acts intended to cause injury, nec
3	Sexual assault and related offences	
	31	Sexual assault
	311	Aggravated sexual assault
	312	Non-aggravated sexual assault
	32	Non-assaultive sexual offences
	321	Non-assaultive sexual offences against a child
	322	Child pornography offences
	323	Sexual servitude offences
	329	Non-assaultive sexual offences, nec
4	Dangerous or negligent acts endangering persons	
	41	Dangerous or negligent operation of a vehicle
	411	Driving under the influence of alcohol or other substance
	412	Dangerous or negligent operation (driving) of a vehicle
	49	Other dangerous or negligent acts endangering persons
	491	Neglect or ill-treatment of persons under care
	499	Other dangerous or negligent acts endangering persons, nec
5	Abduction, harassment and other offences against the person	
	51	Abduction and kidnapping
	511	Abduction and kidnapping
	52	Deprivation of liberty/false imprisonment
	521	Deprivation of liberty/false imprisonment
	53	Harassment and threatening behaviour
	531	Harassment and private nuisance
	532	Threatening behaviour
6	Robbery, extortion and related offences	
	61	Robbery
	611	Aggravated robbery
	612	Non-aggravated robbery
	62	Blackmail and extortion
	621	Blackmail and extortion
7	Unlawful entry with intent/burglary, break and enter	
	71	Unlawful entry with intent/burglary, break and enter
	711	Unlawful entry with intent/burglary, break and enter

APPENDIX 1

Australian and New Zealand Standard Offence Classification (ANZSOC), 2011

source: Australian Bureau of Statistics Catalogue No: 1234.0, ABS

Division	Subdivision	Group
8	Theft and related offences	
	81 Motor vehicle theft and related offences	811 Theft of a motor vehicle 812 Illegal use of a motor vehicle 813 Theft of motor vehicle parts or contents
	82 Theft (except motor vehicles)	821 Theft from a person (excluding by force) 822 Theft of intellectual property 823 Theft from retail premises 829 Theft (except motor vehicles), nec
	83 Receive or handle proceeds of crime	831 Receive or handle proceeds of crime
	84 Illegal use of property (except motor vehicles)	841 Illegal use of property (except motor vehicles)
9	Fraud, deception and related offences	
	91 Obtain benefit by deception	911 Obtain benefit by deception
	92 Forgery and counterfeiting	921 Counterfeiting of currency 922 Forgery of documents 923 Possess equipment to make false/illegal instrument
	93 Deceptive business/government practices	931 Fraudulent trade practices 932 Misrepresentation of professional status 933 Illegal non-fraudulent trade practices
	99 Other fraud and deception offences	991 Dishonest conversion 999 Other fraud and deception offences, nec
10	Illicit drug offences	
	101 Import or export illicit drugs	1011 Import illicit drugs 1012 Export illicit drugs
	102 Deal or traffic in illicit drugs	1021 Deal or traffic in illicit drugs - commercial quantity 1022 Deal or traffic in illicit drugs - non-commercial quantity
	103 Manufacture or cultivate illicit drugs	1031 Manufacture illicit drugs 1032 Cultivate illicit drugs
	104 Possess and/or use illicit drugs	1041 Possess illicit drugs 1042 Use illicit drugs
	109 Other illicit drug offences	1099 Other illicit drug offences, nec
11	Prohibited and regulated weapons and explosives offences	
	111 Prohibited weapons/explosives offences	1111 Import or export prohibited weapons/explosives 1112 Sell, possess and/or use prohibited weapons/explosives 1119 Prohibited weapons/explosives offences, nec

APPENDIX 1

Australian and New Zealand Standard Offence Classification (ANZSOC), 2011

source: Australian Bureau of Statistics Catalogue No: 1234.0, ABS

Division	Subdivision	Group
11	Prohibited and regulated weapons and explosives offences	
	112	Regulated weapons/explosives offences
	1121	Unlawfully obtain or possess regulated weapons/explosives
	1122	Misuse of regulated weapons/explosives
	1123	Deal or traffic regulated weapons/explosives offences
	1129	Regulated weapons/explosives offences, nec
12	Property damage and environmental pollution	
	121	Property damage
	1211	Property damage by fire or explosion
	1212	Graffiti
	1219	Property damage, nec
	122	Environmental pollution
	1221	Air pollution offences
	1222	Water pollution offences
	1223	Noise pollution offences
	1224	Soil pollution offences
	1229	Environmental pollution, nec
13	Public order offences	
	131	Disorderly conduct
	1311	Trespass
	1312	Criminal intent
	1313	Riot and affray
	1319	Disorderly conduct, nec
	132	Regulated public order offences
	1321	Betting and gambling offences
	1322	Liquor and tobacco offences
	1323	Censorship offences
	1324	Prostitution offences
	1325	Offences against public order sexual standards
	1326	Consumption of legal substances in regulated spaces
	1329	Regulated public order offences, nec
	133	Offensive conduct
	1331	Offensive language
	1332	Offensive behaviour
	1333	Vilify or incite hatred on racial, cultural, religious or ethnic grounds
	1334	Cruelty to animals
14	Traffic and vehicle regulatory offences	
	141	Driver Licence offences
	1411	Drive while licence disqualified or suspended
	1412	Drive without a licence
	1419	Driver licence offences, nec
	142	Vehicle registration and roadworthiness offences
	1421	Registration offences
	1422	Roadworthiness offences
	143	Regulatory driving offences
	1431	Exceed the prescribed content of alcohol or other substance limit
	1432	Exceed the legal speed limit
	1433	Parking offences
	1439	Regulatory driving offences, nec
	144	Pedestrian offences
	1441	Pedestrian offences

APPENDIX 1

Australian and New Zealand Standard Offence Classification (ANZSOC), 2011

source: Australian Bureau of Statistics Catalogue No: 1234.0, ABS

Division	Subdivision	Group
15	Offences against justice procedures, government security, and government operations	
151	Breach of custodial order offences	
	1511	Escape custody offences
	1512	Breach of home detention
	1513	Breach of suspended sentence
152	Breach of community-based orders	
	1521	Breach of community service order
	1522	Breach of parole
	1523	Breach of bail
	1524	Breach of bond - probation
	1525	Breach of bond - other
	1529	Breach of community-based order, nec
153	Breach of violence and non-violence orders	
	1531	Breach of violence order
	1532	Breach of non-violence order
154	Offences against government operations	
	1541	Resist or hinder govt. official (exc. police, justice officl. or govt. security officer)
	1542	Bribery involving government officials
	1543	Immigration offences
	1549	Offences against government operations, nec
155	Offences against government security	
	1551	Resist or hinder government officer concerned with government security
	1559	Offences against government security, nec
156	Offences against justice procedures	
	1561	Subvert the course of justice
	1562	Resist or hinder police officer or justice official
	1563	Prison regulation offences
	1569	Offences against justice procedures, nec
16	Miscellaneous offences	
161	Defamation, libel and privacy offences	
	1611	Defamation and libel
	1612	Offences against privacy
162	Public health and safety offences	
	1621	Sanitation offences
	1622	Disease prevention offences
	1623	Occupational health and safety offences
	1624	Transport regulation offences
	1625	Dangerous substances offences
	1626	Licit drug offences
	1629	Public health and safety offences, nec
163	Commercial/industry/financial regulation	
	1631	Commercial/industry/financial regulation
169	Other miscellaneous offences	
	1691	Environmental regulation offences
	1692	Bribery excluding government officials
	1693	Quarantine offences
	1694	Import/export regulations
	1695	Procure or commit illegal abortion
	1699	Other miscellaneous offences, nec

APPENDIX 2

Offence grouping for trends

Category of most serious offence (trends)
ASOC Division

Homicide

Homicide and related offences

Assault

Acts intended to cause injury

Dangerous or negligent acts endangering persons

Abduction, harassment and other offences against the person

Sexual assault

Sexual assault and related offences

Robbery

Robbery, extortion and related offences

Property

Unlawful entry with intent/burglary, break and enter

Theft and related offences

Fraud, deception and related offences

Drugs

Illicit drug offences

Public Order

Prohibited and regulated weapons and explosives offences

Property damage and environmental pollution

Public order offences

Traffic

Traffic and vehicle regulatory offences

Justice order

Offences against justice procedures, government security, and government operations

Miscellaneous

Miscellaneous offences



Corrections Research Evaluation & Statistics
Delivery, Performance and Culture
Corrective Services NSW
GPO Box 31
Sydney NSW Australia

Telephone (02) 8346 1556

Email: research.enquiries@dcj.nsw.gov.au

Material published by
Corrections Research Evaluation & Statistics includes

Research Publications
Research Bulletins
Research Digests
Statistical Publications