



Aboriginal-led data sharing Child Protection and Out-of- home Care Dashboard

Hendra Santoso
Senior Analyst
Child Protection Reporting
Organisational Performance

Family and Community Services
Insights, Analysis and Research
(FACSIAR)

Communities and Justice

June 2024

Acknowledgement to country



I would like to acknowledge the traditional custodians of the land. For me that is the Bidjigal people of the Eora Nation

I pay my respects to their Elders past and present.

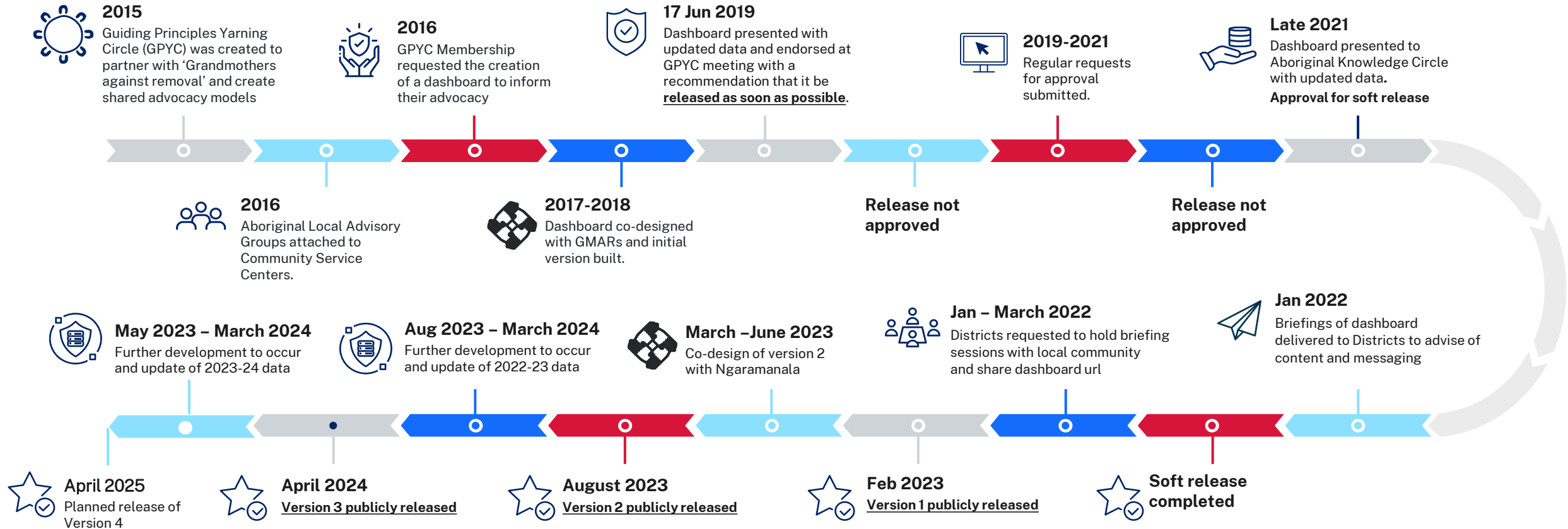
I extend that respect to the Aboriginal and Torres Strait Islander people and colleagues here today.



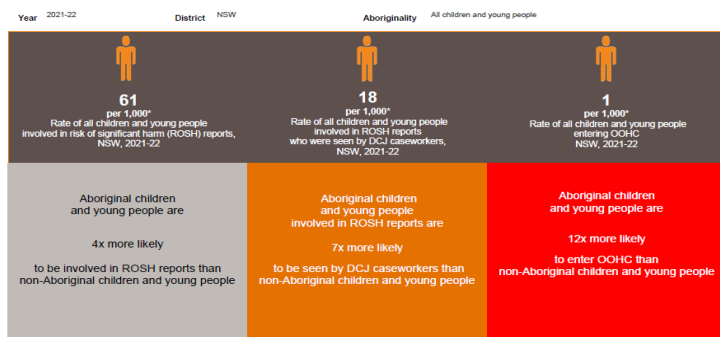
Contents

1	Development timeline of the Aboriginal-led data sharing Child Protection and Out-of-home Care Dashboard	4
2	Evolution of the dashboard	5 - 7
3	What are the measures?	8
4	Next steps	9
5	Web demonstration	10
6	Questions?	11

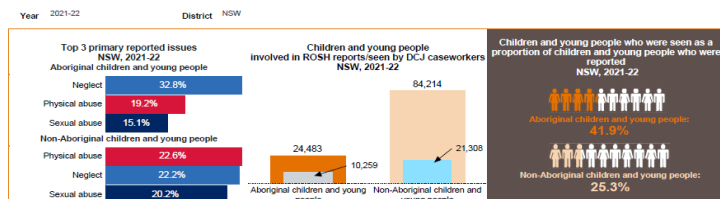
1 Development timeline of the Aboriginal-led data sharing Child Protection and Out-of-home Care Dashboard



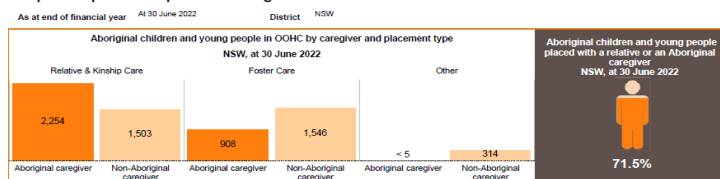
Population rates of children and young people in the NSW child protection system



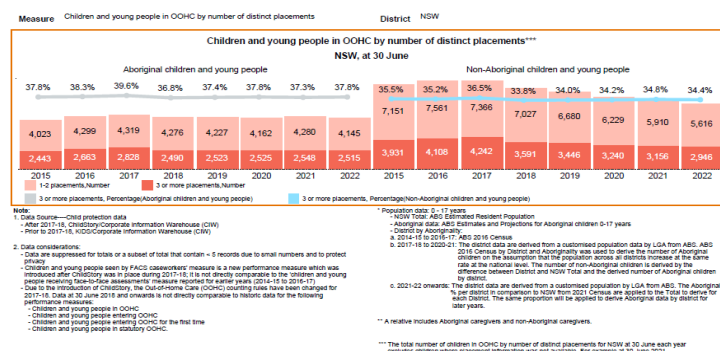
Keeping Aboriginal children and young people safe from harm



Respectful partnerships with Aboriginal families and kin



Supporting the safety and wellbeing of Aboriginal children and young people while in care



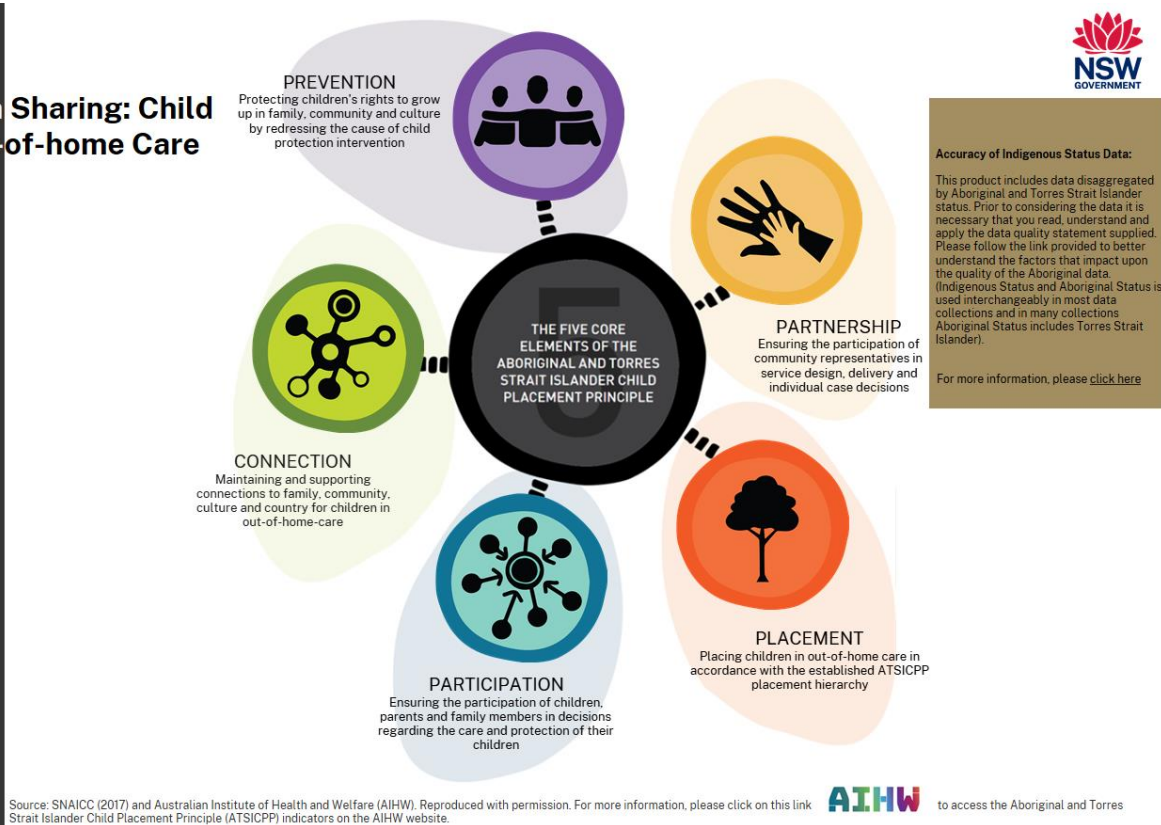
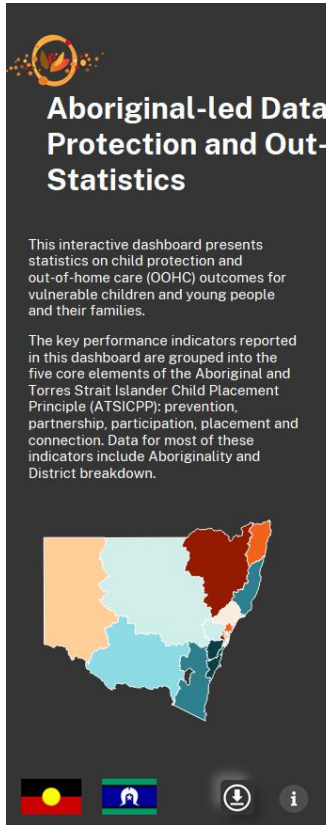
2 Evolution of the dashboard

The **first version** of the dashboard was a one page view that presented all these measures by DCJ district and Aboriginality, publicly released on DCJ website in February 2023.

The measures were grouped by the DCJ departmental framework across 4 themes:

1. Population rates of children and young people in the NSW child protection system
2. Keeping Aboriginal children and young people safe from harm
3. Respectful partnerships with Aboriginal families and kin
4. Supporting the safety and wellbeing of Aboriginal children and young people while in care.

2 Evolution of the dashboard *cont..*

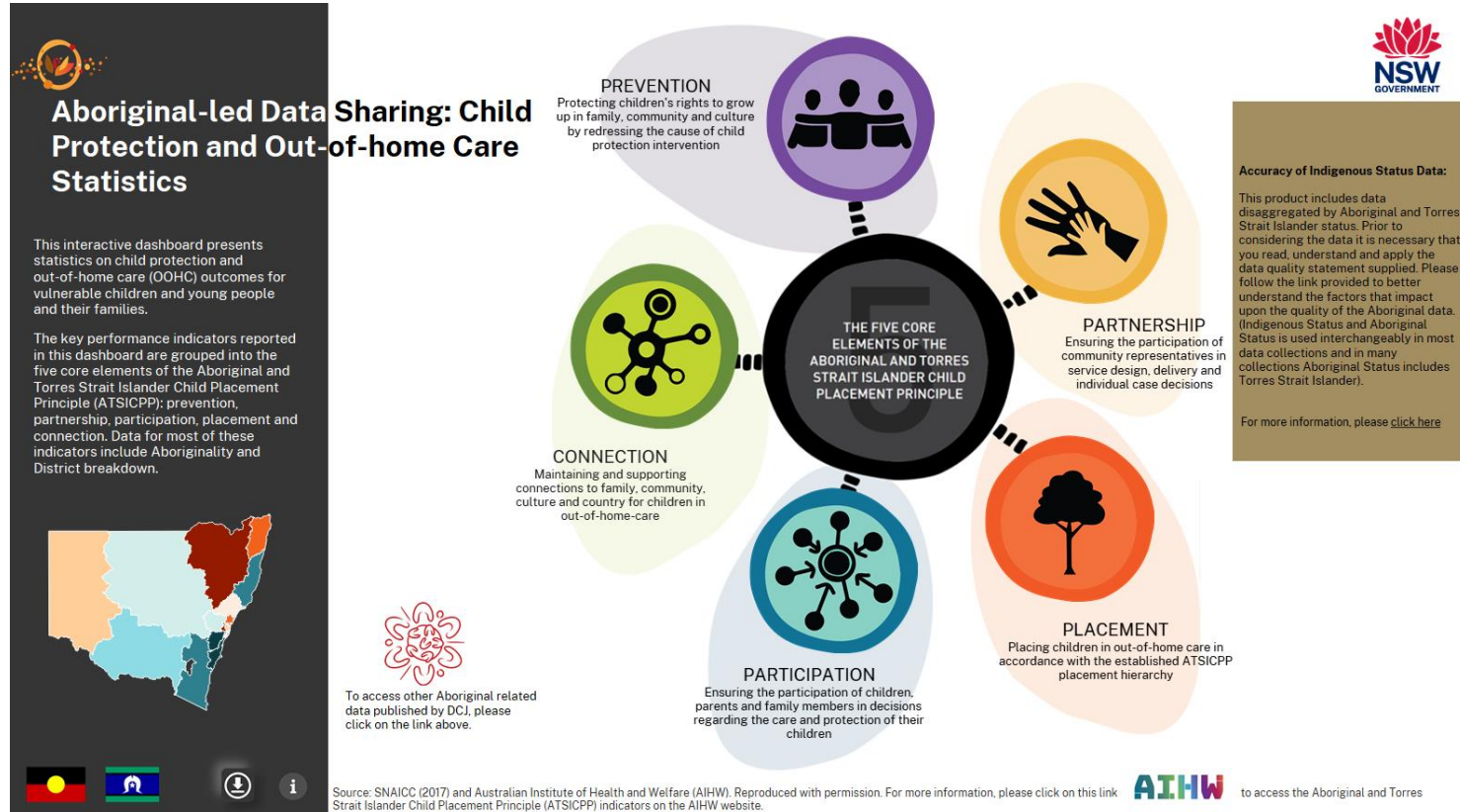


The **second version** of the dashboard had similar information but was re-designed to present this information from an Aboriginal perspective using the the Aboriginal and Torres Strait Islander Child Placement Principles (ATSICPP), from the Secretariat of National Aboriginal and Islander Child Care (SNAICC).

The key performance indicators in the new design are grouped by the five core elements of ATSICPP: Prevention, Partnership, Placement, Participation and Connection.

This is a framework designed to promote policy and practice that will reduce the over-representation of Aboriginal and Torres Strait Islander children in the child protection system.

2 Evolution of the dashboard *cont..*



The **third version** of the dashboard is the current dashboard publicly released on the DCJ website ([link](#)) which includes 4 additional measures. FACSIR are committed to improving the current dashboard and consulting with key Aboriginal stakeholders to address reporting gaps.

For example, in version 2 we explicitly acknowledged a gap in the Partnership element and in version 3 have added in information about funding to Aboriginal Community Controlled Organisations.

3 What are the measures?

First version

1. Population rates for children and young people (CYP) at ROSH, entering out-of-home care (OOHC) and children seen
2. Top 3 primary reported issues
3. Number and proportion of CYP at ROSH and children seen
4. Number of CYP in OOHC by placement type
5. Number of Aboriginal CYP placed with a relative or an Aboriginal caregiver
6. Number of CYP in OOHC by distinct placements
7. Number of CYP in statutory OOHC placed with NGOs
8. Number of CYP in statutory OOHC by case management responsibility
9. Number of CYP entering OOHC (and first time ever)

Second version

Measures in first version dashboard, plus:

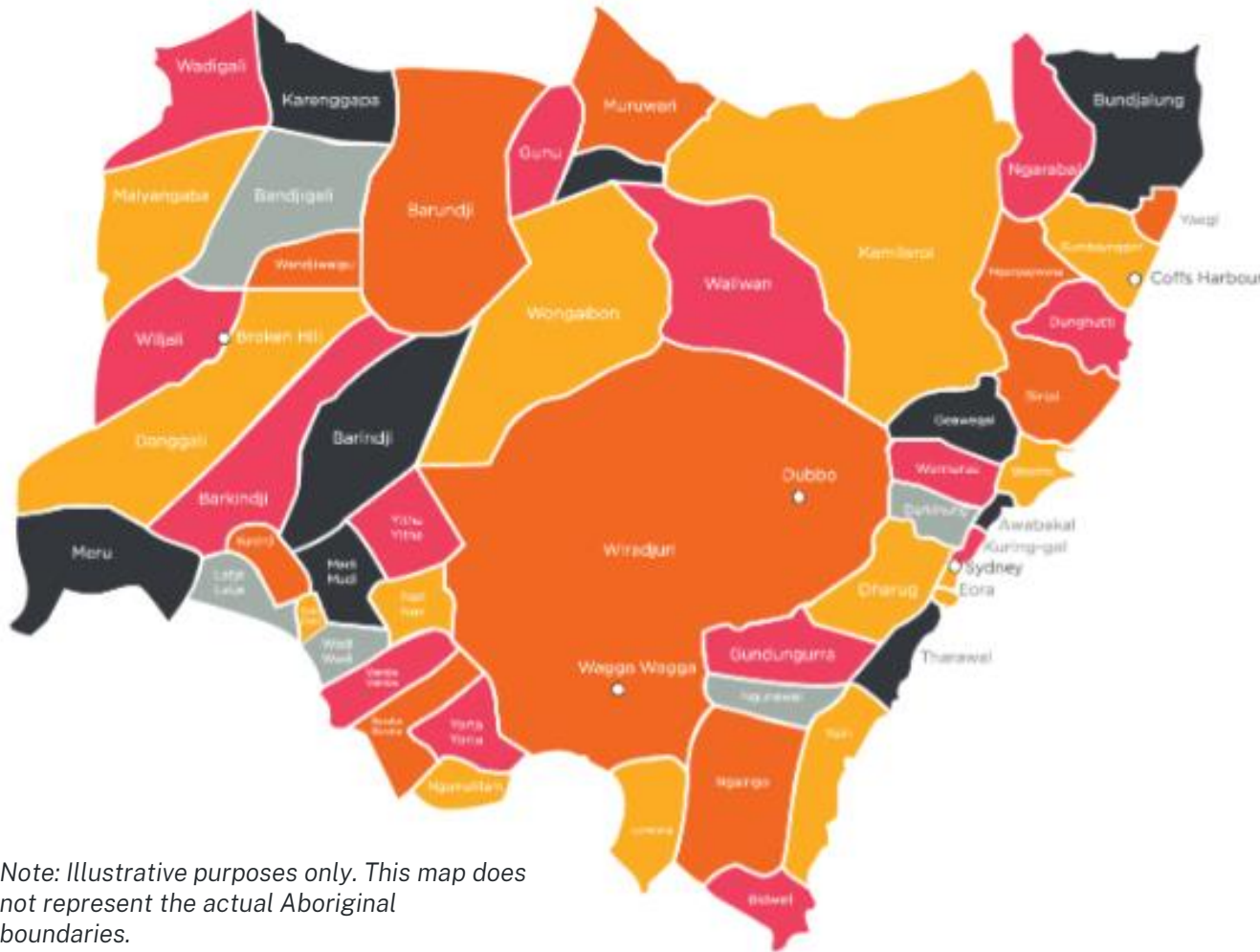
- Population rates for CYP in OOHC
- CYP on Guardianship Order at 30 June;
- CYP who exited OOHC, to restoration; and to Guardianship Order during the year and proportion of these children when compared to CYP in OOHC at 30 June previous year; and
- Number and percentage of children and young people with documented case plan, cultural support plan and leaving care plan.

Third version

Measures in second version dashboard, plus:

- Funding commitments to Aboriginal Community Controlled Organisations (ACCOs);
- CYP in OOHC by length of time in care;
- Number and percentage of CYP with documented case plan, cultural support plan and leaving care plan by case management responsibility; and
- A measure of permanency stability - i.e. children and young people who were restored and did not return to OOHC within 12 months

4 Next steps



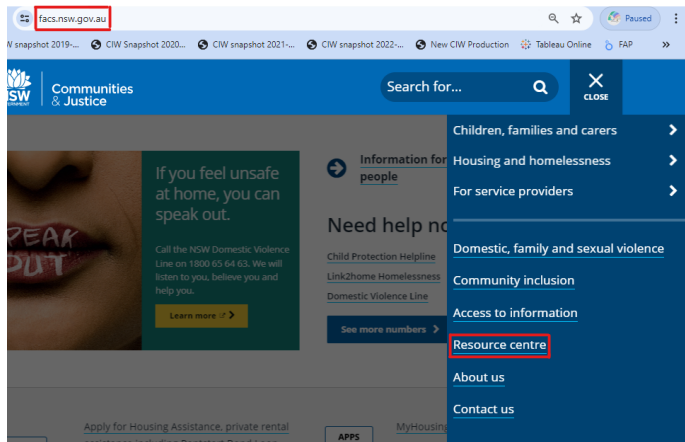
Note: Illustrative purposes only. This map does not represent the actual Aboriginal boundaries.

FACSIAR will:

- Present the data in the dashboard by Aboriginal boundaries in NSW to complement the DCJ District boundaries.
- Plan to meet with representatives from Aboriginal Land Council this year to discuss these requirements.
- Review existing measures to:
 - Address data gaps
 - Identify new measures
 - Retire new measures that are no longer appropriate

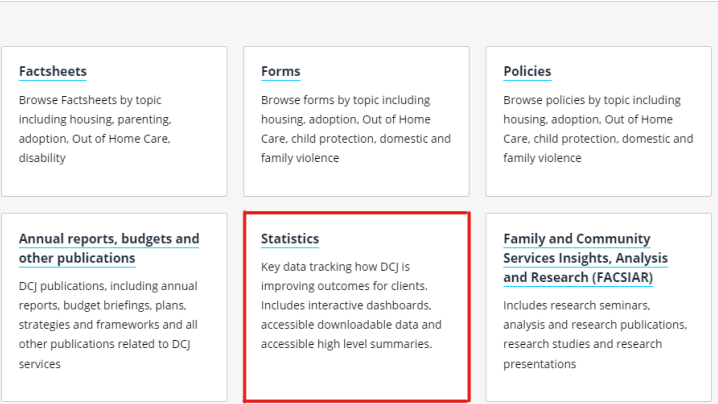
5 Web demonstration

Steps to navigate to the Aboriginal-led data sharing dashboard on the DCJ website



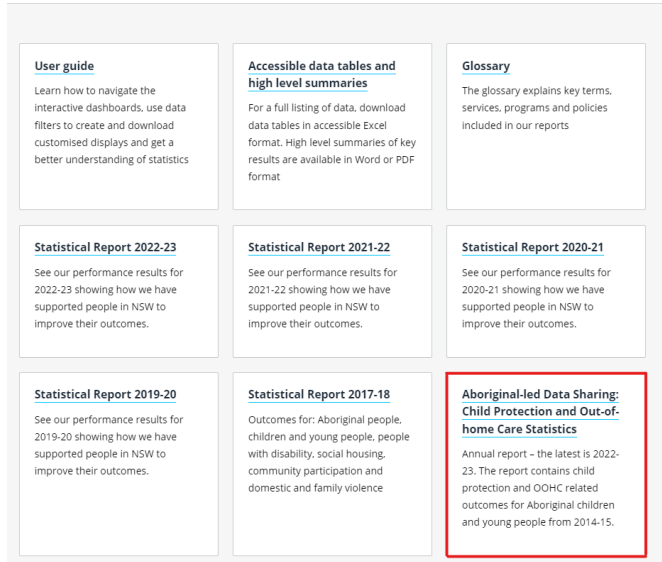
Resource centre

Statistics and listings of factsheets, forms, policies, publications, and research reports and also videos



Statistics

Key DCJ performance data - shows the services we provide, clients we serve and outcomes we deliver. We are committed to user-friendliness, transparency, accountability and open data sharing.



Explore the dashboard: [Aboriginal-led Data Sharing: Child Protection and Out-of-home Care Statistics](#)

6 Questions?

