



# Domestic and Family Violence Programs

## IDFVS and SHLV Expansion

### DVNSW Information Session

Anne Campbell Deputy Secretary,  
Strategy, Policy and Commissioning

10 September 2024

We acknowledge Aboriginal people as the First Nations Peoples of NSW and pay our respects to Elders past, present and future.

We acknowledge the ongoing connection Aboriginal people have to this land and recognise Aboriginal people as the original custodians of this land.



# What we will cover today



## NSW Domestic and Family Violence Emergency Package program expansions

- Specialist Workers for Children and Young People
- Staying Home Leaving Violence
- Integrated Domestic and Family Violence Services

The approach to expansion of these programs

Key locations for SHLV expansion

Co-design of Aboriginal DFV Programs

Key dates and Questions

# 1

## NSW Domestic Violence Emergency Package

Specialist Workers for Children & Young People

Staying Home leaving Violence

Integrated DFV Service

# NSW Domestic Violence Emergency Package

## \$245m over 4 years

### Crisis response \$48m over 4 years

- Expand SHLV statewide – additional 37 LGAs will be covered
- Expand IDFVS – additional 6 services will commence
- Increase Aboriginal led delivery of DFV responses through processes of community co-design

### Early Intervention \$48m over 4 years

- \$48M to secure and increase funding for workers who support children accompanying their mothers to refuges – Specialist Workers Children and Young People (SWCYP).
- Extend 21 existing contracts to 2026 in line with existing SHS contract timeframes
- Expand program to an additional 10 services



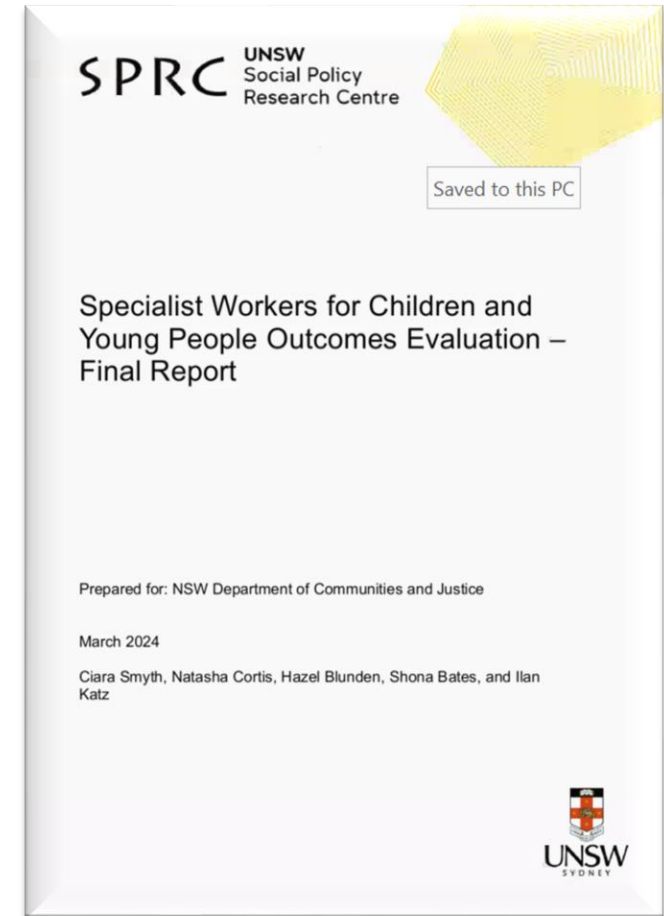


# Specialist Workers for Children and Young People : \$48 million over four years

- Extension of existing 21 contracts *and* expansion to an additional 10 contracts, to 30 June 2026.
- The expansion will mean the program is able to support children and young people in over 32 refuges, delivered by more than 55 specialist workers. This includes 22 regional locations.

## Identifying the 10 services for SWCYP expansion

- To receive funding, services needed to be already operating at least 1 DCJ funded women's refuge.
- The refuges selected were based on the highest proportion of Aboriginal Children and Young People CYP.
- Aboriginal women and Children and Young People impacted by domestic and family violence are 35 times more likely than non-Aboriginal rates.
- All 21 contracts have been extended and 10 new sites contracts are being executed



# Principles guiding SHLV and IDFVS Expansion

**Deliver service expansion quickly to meet high areas of need and demand**

Varying existing contracts and extending LGA coverage for some providers

**Increase Aboriginal Service delivery**

Thorough market analysis, single invited tender opportunities and funding allocated for 3 codesigned projects and family violence models

**Financial modelling for LGAs is weighted for demand**

Procurement amounts for LGA coverage for SHLV will differ. Evidence based decision making based on data.

**Longer contracts for Aboriginal service providers and new providers**

Contracts to 2031 to align with recommissioned DFV services (4+ 2 years)

**Open the market to new providers through competitive procurement**

Fair and equitable process. New providers must have DFV expertise and local footprint

# DFV Emergency Package –SHLV and IDFVS

## Scope of the expansion funding

---

This funding package is about expanding the availability of DFV programs to areas they are not currently available across NSW rather than providing a program funding uplift.

- ✓ DCJ is aware of the need for additional funding for SHLV program due to increased demand and cost of security upgrades and use of brokerage.
- ✓ The program area is reviewing brokerage use and increased costs of security upgrades to better understand the additional resources needed across the program.
- ✓ Expansion will prioritise rural and regional locations for new IDFVS services with a whole of family approach
- ✓ Selected locations consider more than DFV rates and demand, there has been significant supply analysis to understanding the changing provider landscape
- ✓ Phased approach over 4 years will allow consultation and planning for Aboriginal models for delivery in gap areas
- ✓ DCJ will work directly with ACCOs identified in market analysis who are equipped with the skills and capacity to deliver DFV specialist services.



# 2

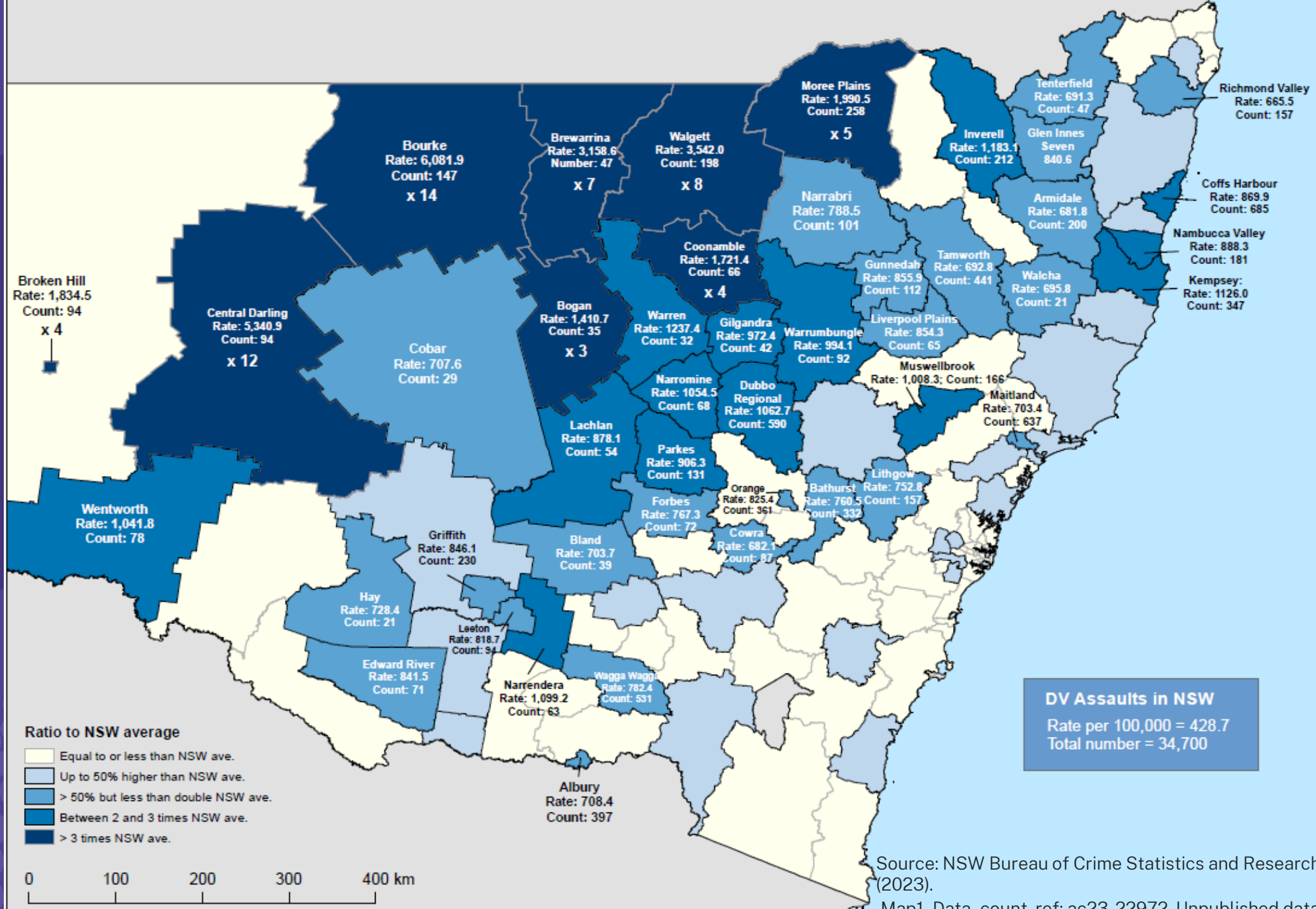
Evidence based expansion  
approach

# LGAs with High rates of DV

- 46 LGAs have DV rates over +50% the State average

- 11% of the NSW pop live in these LGAs

- They account for 24% of all DV assaults



# SHLV - Achieving coverage with a mixed procurement approach

Current coverage delivers SHLV in 91 LGAs.

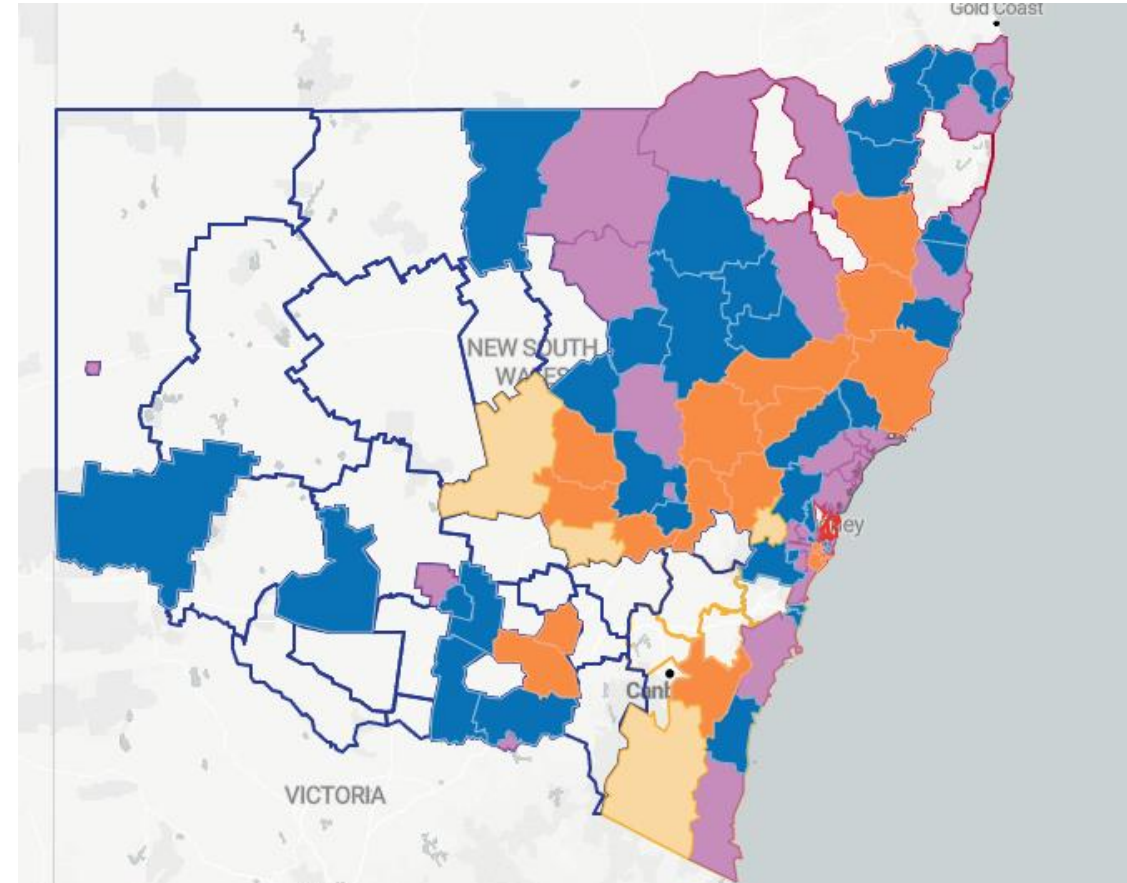
Key service gaps in Western, Murrumbidgee, Southern and Northern Sydney districts.

DCJ will increase coverage through variations to existing services and procurement for new contracts covering 25 LGAs.

Procurement approach is based on

- Market analysis and district recommendations
- Geographical extensions will result in quick expansion
- Open competitive tender where there is a market and sector capacity to respond
- Single invited tender where the market analysis indicates this is the most appropriate approach.

Long contracts to 2031 for newly established services (4 + 2 years).



# SHLV – Contract extensions to 2026 and procurement of new services

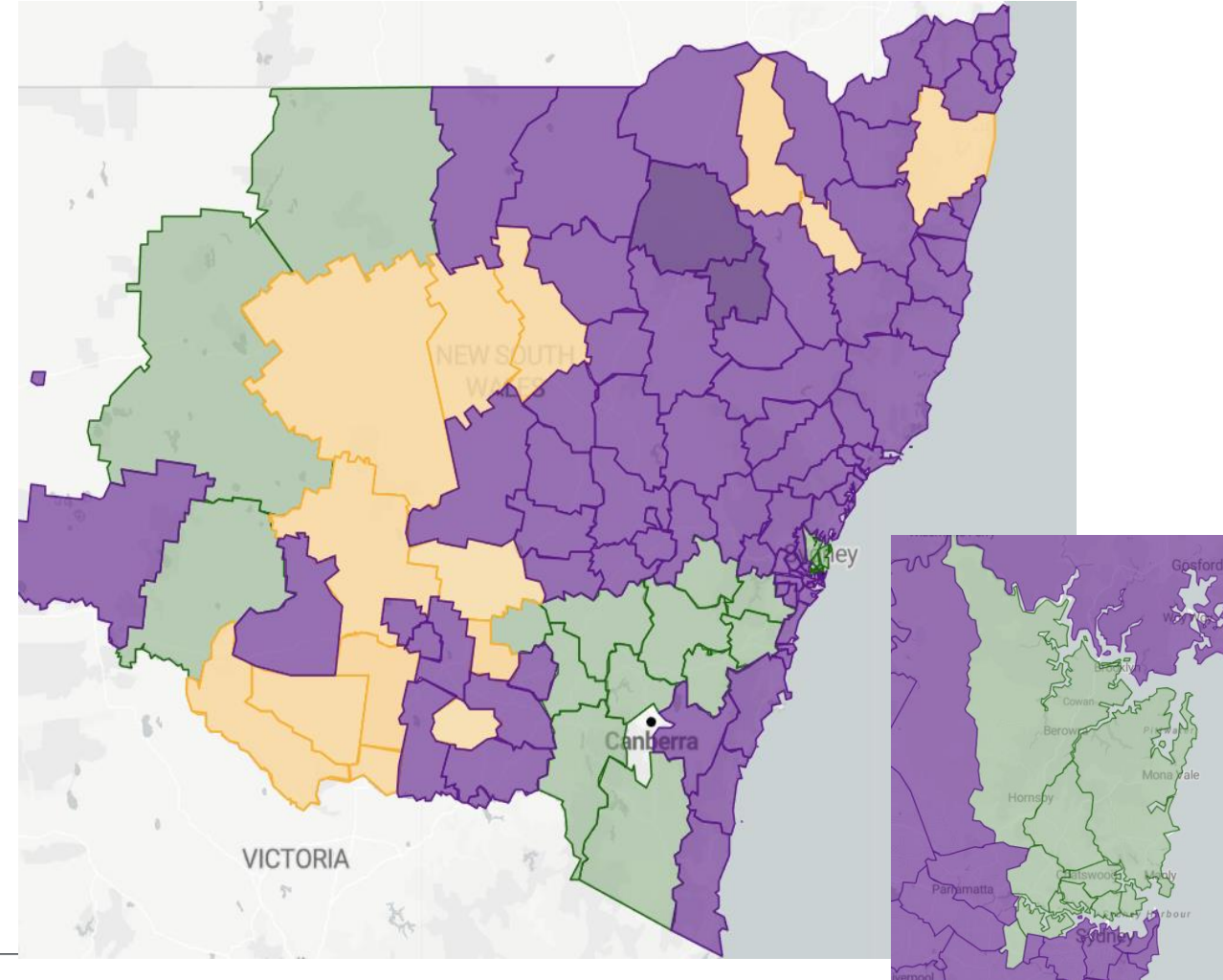
Existing services are delivered through 39 contracts ending June 2025.

DCJ will extend all current contracts by one year to align in 2026 with the recommissioning approach for DFV programs including women’s refuges and SWCYP.

Most contracts will be extended with no changes.

Some contracts will have changes to LGA coverage and receive expansion funding to increase service delivery to neighbouring LGA where they already have a DFV service capacity and footprint.

14 new SHLV contracts will be procured through open and limited tender.





# SHLV: Locations for open procurement

District	Number of services and LGAs covered	LGAs to be covered
Murrumbidgee Far West and Western NSW	3 new services covering 6 LGAs	<p>Service 1: Cootamundra region of Cootamundra – Gundagai LGA, Hilltops, Temora</p> <p>Service 2: Gundagai region of Cootamundra – Gundagai LGA, Snowy Valleys Regional</p> <p>Service 3: Balranald and Central Darling</p>
Sydney, South-Eastern Sydney and Northern Sydney (SSESNSD)	3 new services covering 11 LGAs	<p>Service 4: Hornsby, Ryde and Hunters Hill</p> <p>Service 5: Northern Beaches Lane Cove, Ku-Ring-Gai, Mosman, North Sydney, Willoughby</p> <p>Service 6: Canada Bay and Strathfield</p>
Western Sydney Nepean Blue Mountains	1 new service covering 1 LGA	Service 7: Blue Mountains
South-Western Sydney	1 new service covering 2 LGAs	Service 8: Wingecarribee and Wollondilly
Illawarra Shoalhaven and Southern NSW	2 new service covering 4 LGAs	<p>Service 9: Goulburn Mulwaree, Upper Lachlan Shire and Yass Valley</p> <p>Service 10: Snowy Monaro</p>

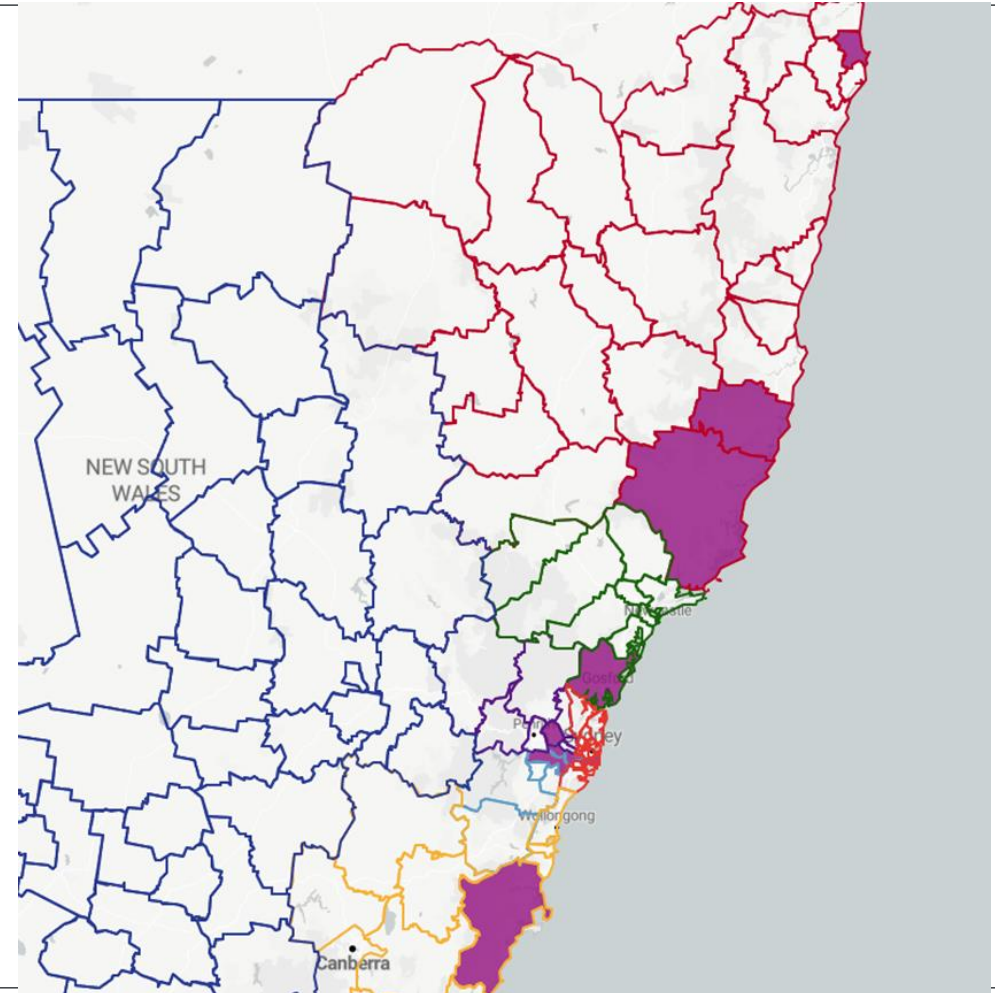
# SHLV: Locations for Single Invited Tender

District	Number of services and LGAs covered	LGAs to be covered
Murrumbidgee Far West and Western NSW	2 new services covering 2 LGAs	Service 11: Oberon  Service 12: Bourke Co-designed pilot project underway with community consultation on the service model and design
Mid North Coast, Northern NSW and New England	2 new services covering 2 LGAs	Service 13: Narrabri LGA  Service 14 : Gunnedah LGA



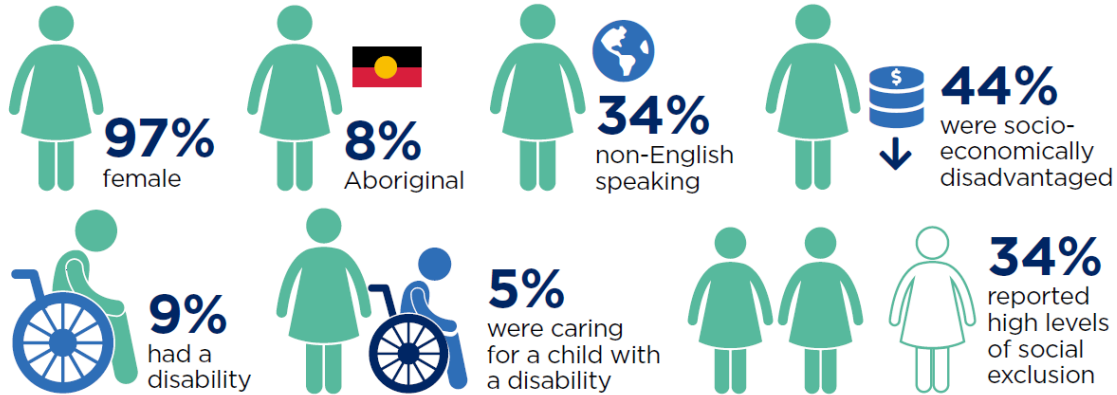
# Integrated Domestic and Family Violence Service (IDFVS)

- IDFVS is a multi-agency response to prevent the escalation of domestic and family violence among high-risk groups and targeted communities.
- This smaller program works to provide a unified approach to support and navigate the support system through 11 services across NSW.
- IDFVS can work with the whole of family, including victim-survivors who may still be living in a violent relationship, children as clients in their own right and the person using violence.
- IDFVS can provide services to women still living with violence, building their capacity for safety over time, and providing flexible service delivery driven by local context and client needs.
- **6 new IDFVS services in regional locations will be procured through open tender.**



# IDFVS – was last evaluated in 2018

## Breakdown of the 4907 adults clients of the IDFVS



- Evaluation recommendations and consultation with IDFVS services, the DFV sector and Districts have indicated that there is high demand for services that can work with the whole of family.
- Links to therapeutic support and behaviour change programs for the person using violence are a key part of the response.

DCJ Program Delivery and Integration will be revising the IDFVS program service specifications to align with a more evidence based, whole of family response, while still providing a place based and local response.

- The evaluation suggests that the IDFVS program delivers benefits for clients experiencing domestic and family violence (DFV) including:
  - filling a major gap in the service system by providing services to women still living with violence, building capacity for safety over time
  - substantial improvements in client wellbeing and high levels of client satisfaction
  - flexible service delivery driven by local context working to meet client need.
- The report includes recommendations for program improvement related to systems and data, building workforce capacity and strengthening community education activities.

# 3

## Culturally responsive family violence models

Staying in Community, Leaving Violence



# Aboriginal models of SHLV and IDFVS

Part of the DFV Emergency Funding Package will be allocated for the design and delivery of culturally responsive Aboriginal DFV models that achieve the SHLV and IDFVS outcomes in a culturally safe way.

Research shows that for Aboriginal communities, successful family violence programs include community involvement in service planning; engagement and relationship building; consideration of cultural factors; integrated service delivery; planning for long-term sustainability; and having a holistic focus with flexible, trauma-informed approaches. (AHURI 2019)

DCJ experience demonstrates that working with specific communities, with dedicated funding and collaborative service design takes longer in the planning but is more successful in the outcomes for the service. (Aboriginal Homelessness Sector Growth program)

DCJ will partner with Regional Assemblies and Local Decision Making bodies to work in **three locations** and to undertake codesign activities with the community over 12 -18 months.



Lilly Pilly Place by Stacey Trindall and used with the artist's permission  
barumarangaart@outlook.com

We have the opportunity and the funds to do things differently, aligned to community and culture

# Staying Home Leaving Violence



## Co-design and pilot of 'Staying in Community, Leaving Violence' model in Western NSW



Over the past 12 months DCJ and Murdi Paaki Regional Assembly have partnered to codesign a family violence model based on lived experience and local evidence for delivery in Bourke.

### Foundation Principles

- Founded in Aboriginal culture and world view in relation to family violence.
- Aboriginal women may be unable or unwilling to fragment their identity by leaving the community, kin, family or partners as a solution to violence
- a response focussed on safety planning and accessible, culturally safe crisis housing, on a client led, short term respite basis
- the entire family including the needs of the person using violence - access to culturally safe places for healing, and accommodation.
- the need for SHLV staff to be from community, provided with training and implementation support, and embedding community voice in governance of model.

# 4

## Key Dates and Next Steps



# Key dates

---

- ✓ IDFVS and SHLV contracts will be extended to 2026
  - ✓ By November 2024, 14 more LGAs covered with SHLV through the extension process
  - ✓ From April 2025 all 128 LGAs will be covered for SHLV service response
  - ✓ From June 2025, 6 new IDFVS services will be operating in areas of high needs
- **8 October** SHLV tender opens for open and single invited tenders
  - SHLV Industry Briefing – within one week of tender opening
  - **5 November** SHLV tender closes
  - November existing SHLV and IDFVS contracts are extended for one year in line with recommissioning of other key DFV services
  - **February 2025** IDFVS tender opens
-

Step	2024 Aug Sept	2024 Oct	2024 Nov	2024 Dec	2025 Jan	2025 Feb	2025 March	2025 April	2025 May	2025 June	2025 July	2025 August	2025 Sept
SHLV expansion													
Preparation for procurement													
Tender opens		SHLV											
services commence from April 2025 – June 2031								24 LGAs covered through competitive procurement and new services					
<ul style="list-style-type: none"> <li>Contracts extended to 2026</li> <li>Contracts varied to include new LGA coverage</li> <li>Services commence in new 14 LGAs based on extension of existing contracts</li> </ul>			14 LGAs covered by extension of existing contracts – addressing partial and limited current service										
IDFVS Expansion													
Preparation for procurement including revising the IDFVS program specifications													
Tender opens						IDFVS							
services commence from June 2025 – June 2031										6 new IDFVS services commence in priority locations			
ACCO Codesign and Procurement													
Identification of 3 locations based on market analysis													
Process to codesign services commences in three locations													
Bourke co-design pilot program community consultation													
Procurement for Bourke service													

# Questions and contact information

Sarah Bradfield, Director Program Delivery and Integration Branch, Early Intervention, Disability and Inclusion Directorate

[Sarah.Bradfield@dcj.nsw.gov.au](mailto:Sarah.Bradfield@dcj.nsw.gov.au)

Jaye Hardy, Manager DFV Design and Delivery, Program Delivery and Integration Branch

[Jaye.Hardy@dcj.nsw.gov.au](mailto:Jaye.Hardy@dcj.nsw.gov.au)

Program team:

[DFVPrograms@dcj.nsw.gov.au](mailto:DFVPrograms@dcj.nsw.gov.au)

